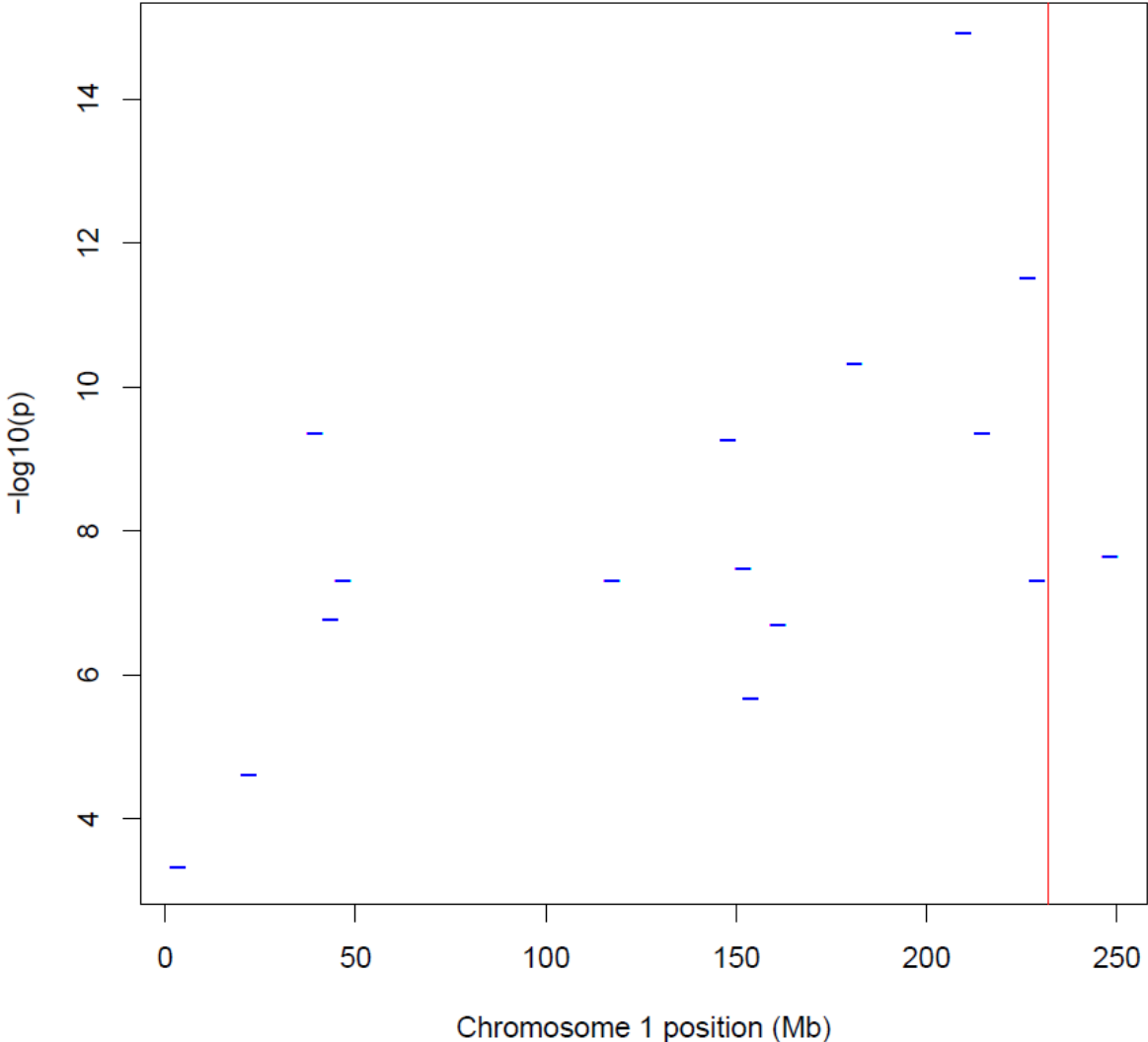
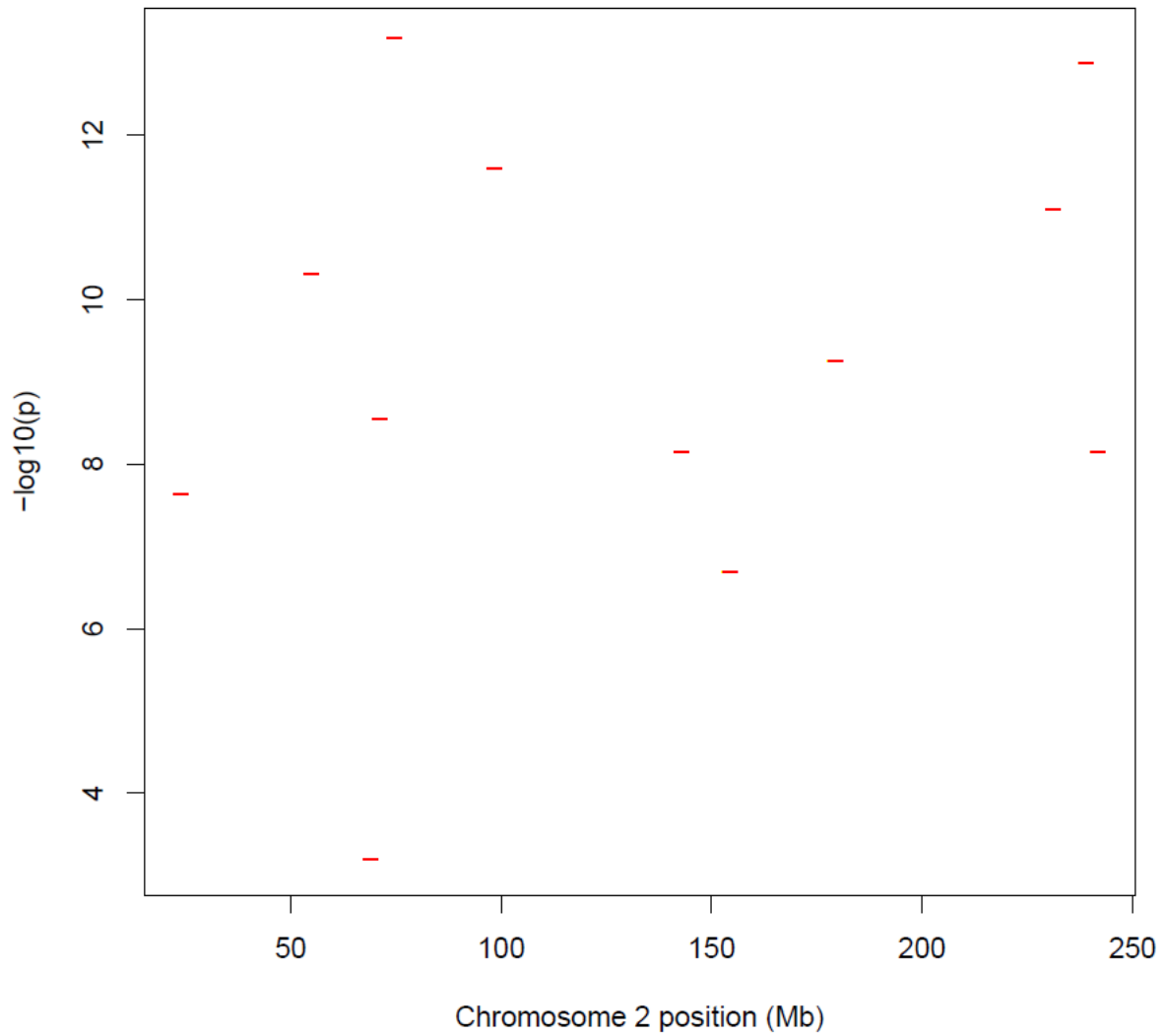


Chromosome 1 DMRs



Supplementary Figure 1 DMRs identified on chromosome 1
DMRs identified between t(1;11) carriers and non-carriers on chromosome 1. Chromosomal position in megabases (Mb) is shown along the X-axis while $-\log_{10}$ p-value is shown along the Y-axis. The red vertical line represents the t(1;11) breakpoint on chromosome 1.

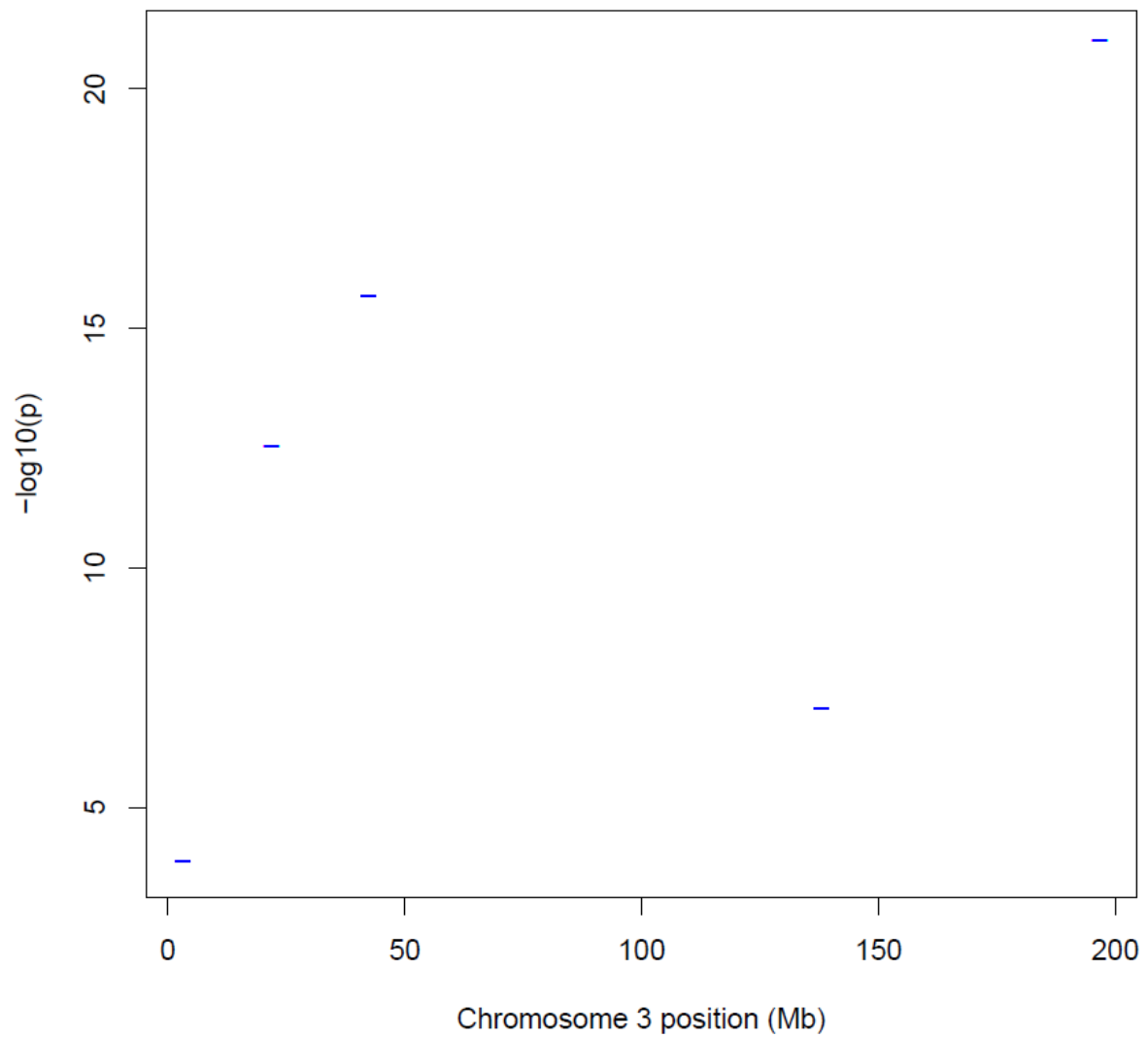
Chromosome 2 DMRs



Supplementary Figure 2 DMRs identified on chromosome 2

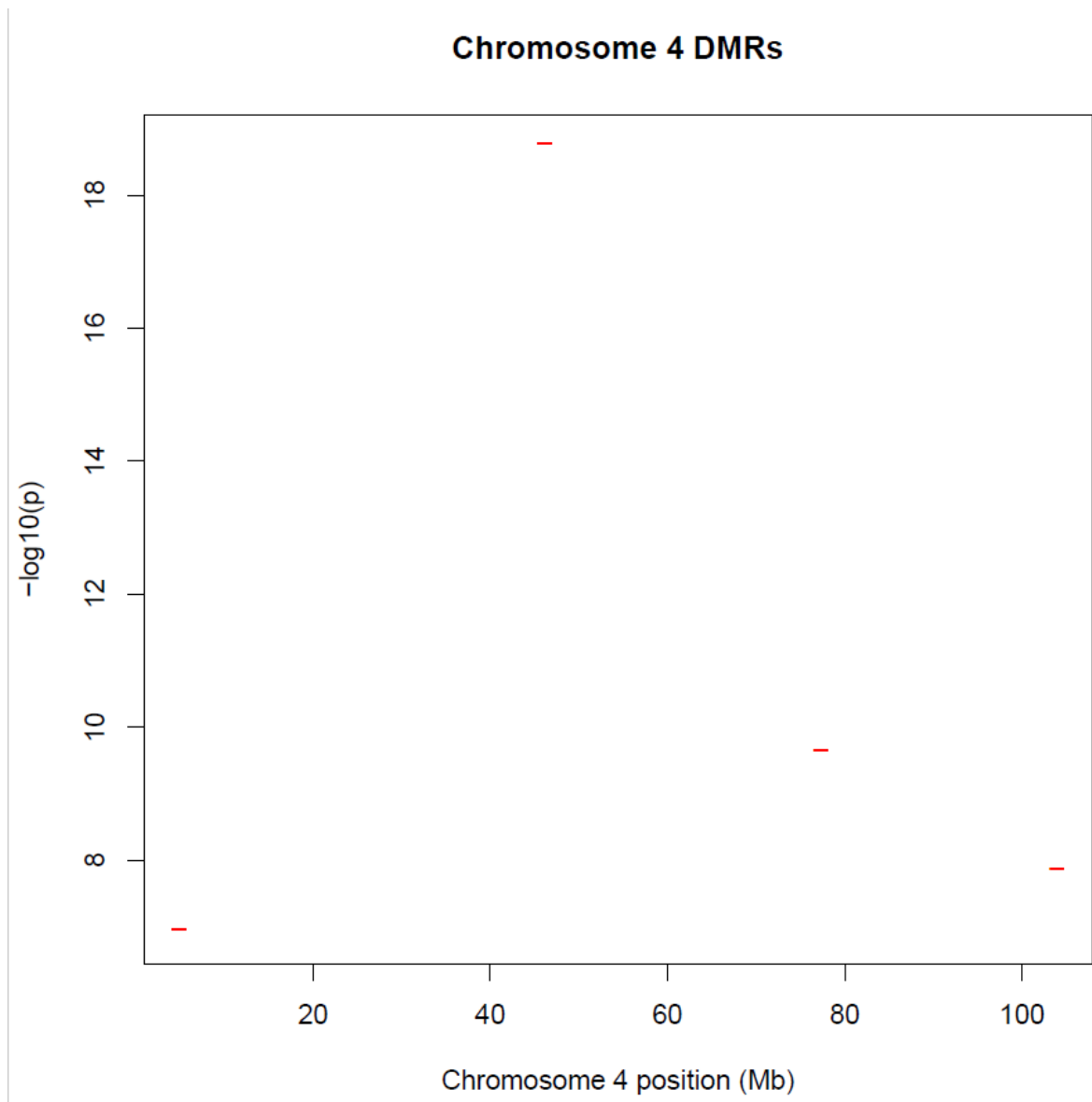
DMRs identified between t(1;11) carriers and non-carriers on chromosome 2. Chromosomal position in megabases (Mb) is shown along the X-axis while $-\log_{10}$ p-value is shown along the Y-axis.

Chromosome 3 DMRs



Supplementary Figure 3 DMRs identified on chromosome 3

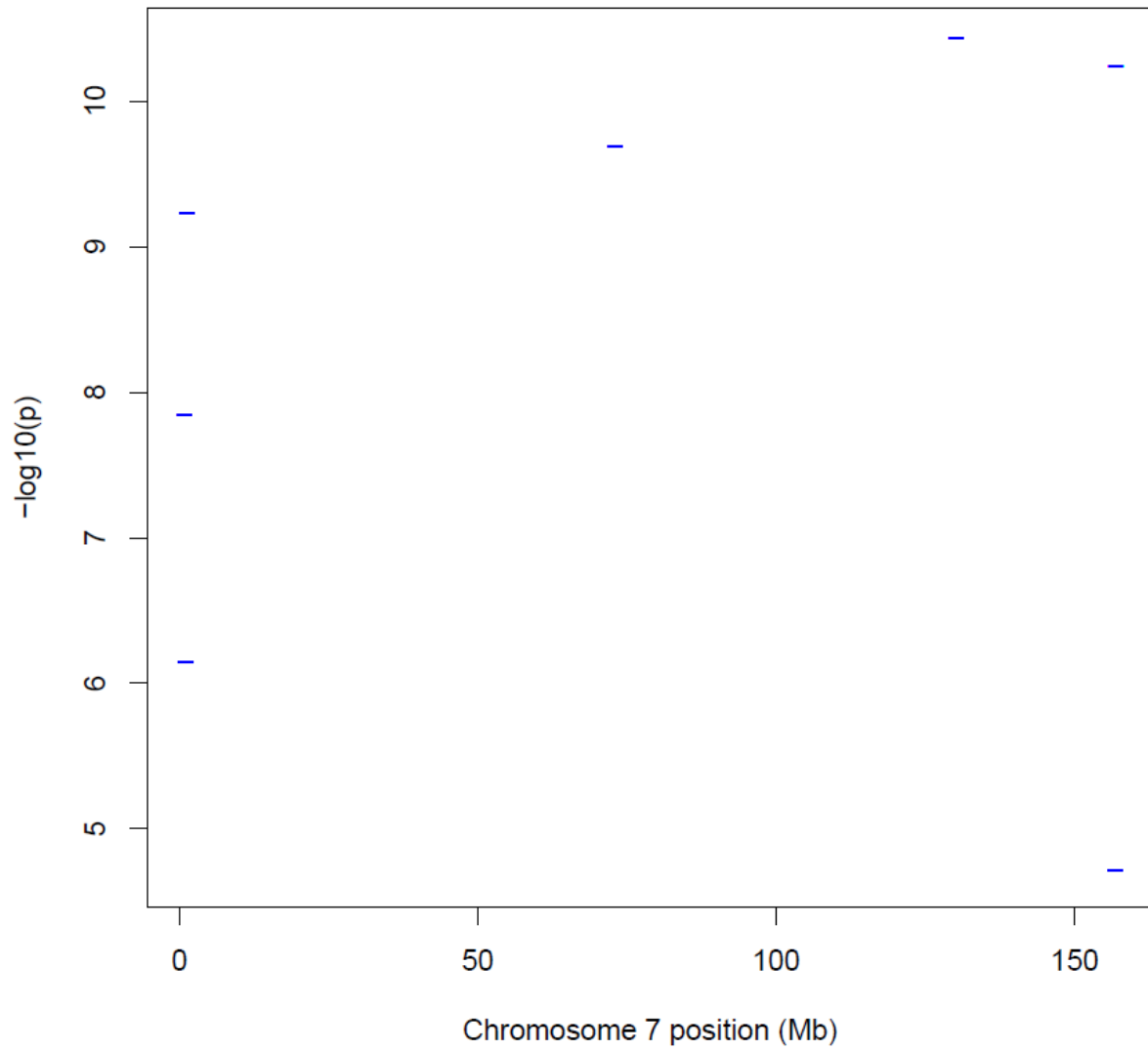
DMRs identified between t(1;11) carriers and non-carriers on chromosome 3. Chromosomal position in megabases (Mb) is shown along the X-axis while $-\log_{10}$ p-value is shown along the Y-axis.



Supplementary Figure 4 DMRs identified on chromosome 4

DMRs identified between t(1;11) carriers and non-carriers on chromosome 4. Chromosomal position in megabases (Mb) is shown along the X-axis while $-\log_{10}$ p-value is shown along the Y-axis.

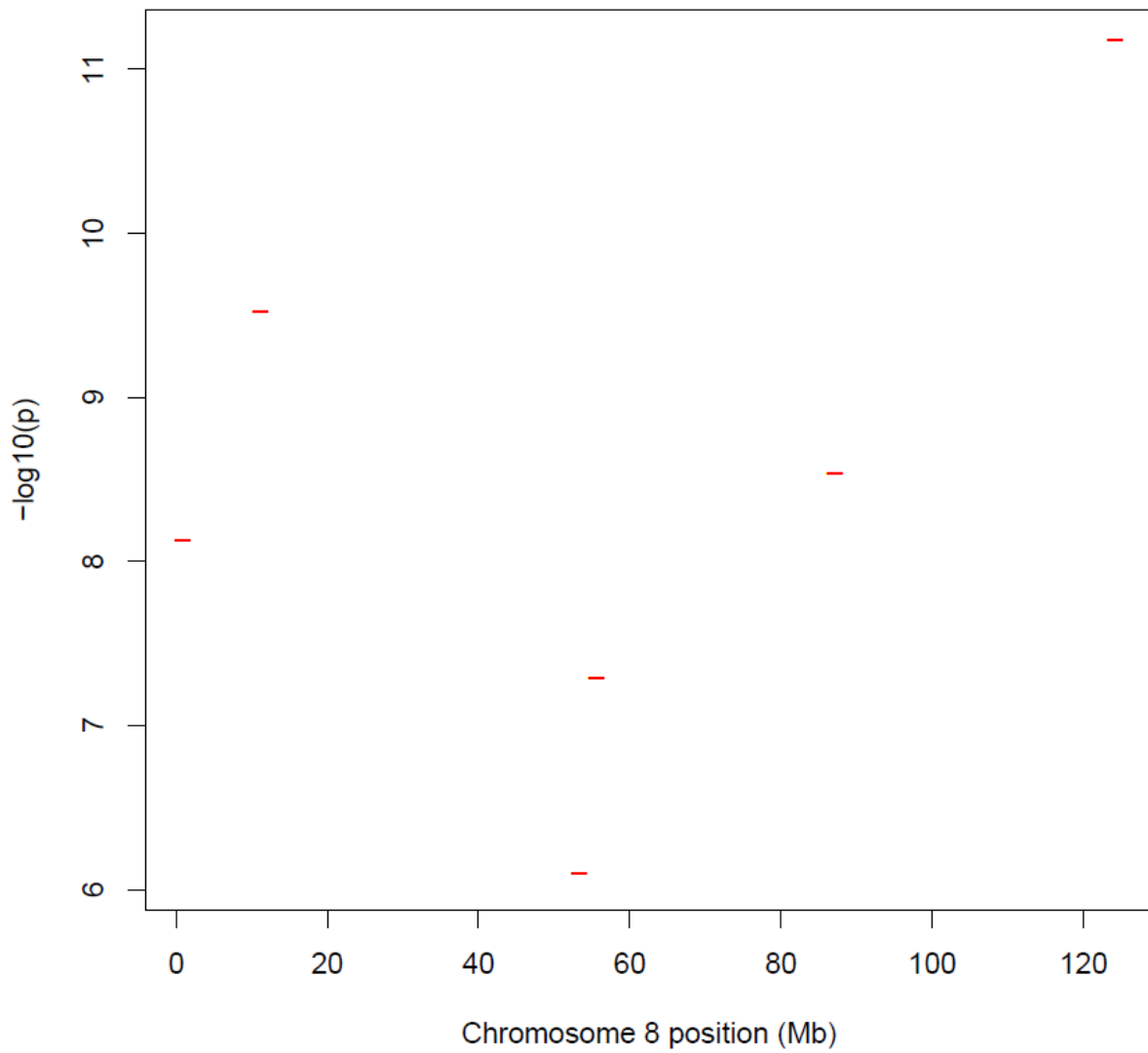
Chromosome 7 DMRs



Supplementary Figure 5 DMRs identified on chromosome 7

DMRs identified between t(1;11) carriers and non-carriers on chromosome 7. Chromosomal position in megabases (Mb) is shown along the X-axis while $-\log_{10}$ p-value is shown along the Y-axis.

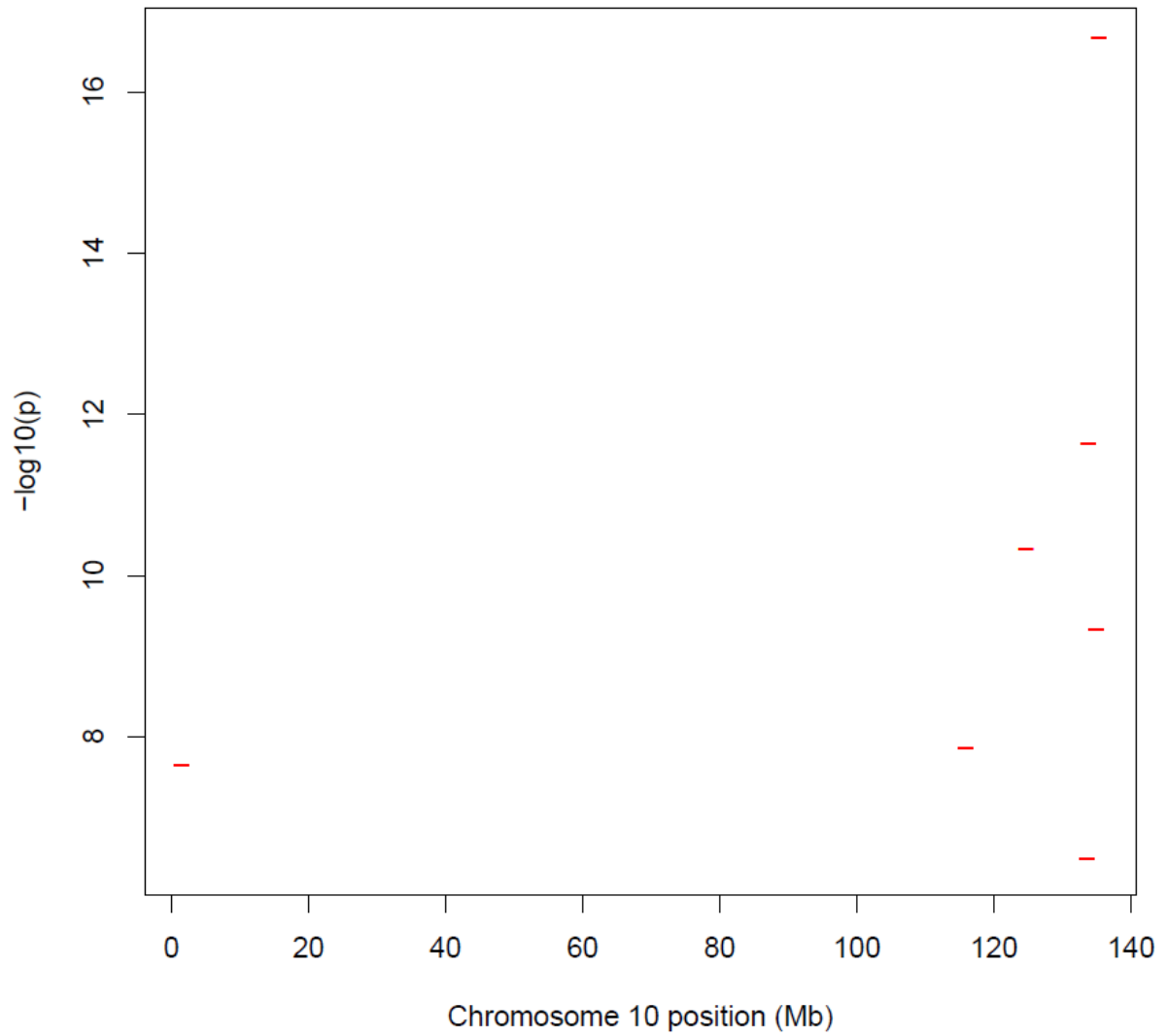
Chromosome 8 DMRs



Supplementary Figure 6 DMRs identified on chromosome 8

DMRs identified between t(1;11) carriers and non-carriers on chromosome 8. Chromosomal position in megabases (Mb) is shown along the X-axis while $-\log_{10}$ p-value is shown along the Y-axis.

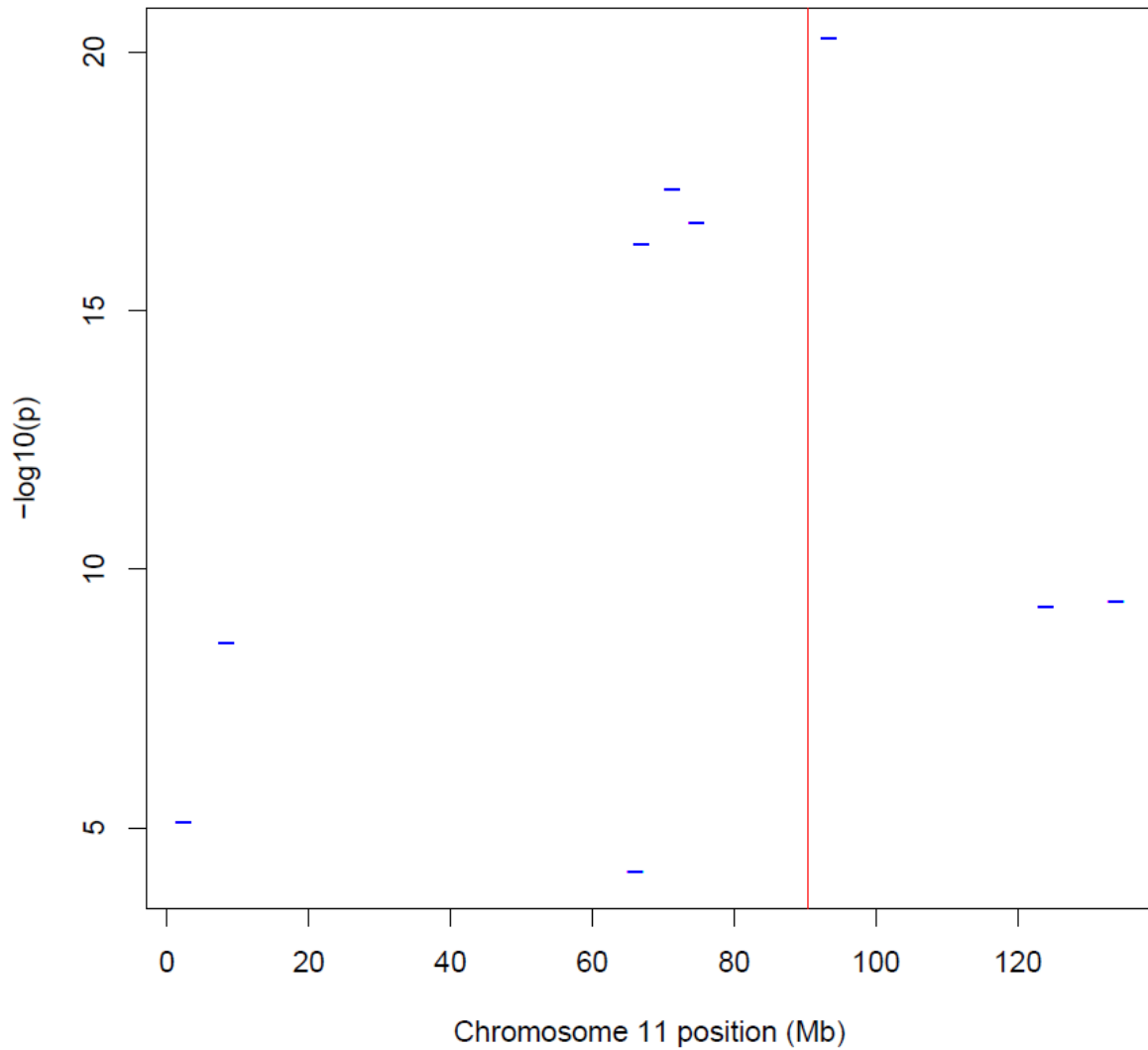
Chromosome 10 DMRs



Supplementary Figure 7 DMRs identified on chromosome 10

DMRs identified between t(1;11) carriers and non-carriers on chromosome 10. Chromosomal position in megabases (Mb) is shown along the X-axis while $-\log_{10}$ p-value is shown along the Y-axis.

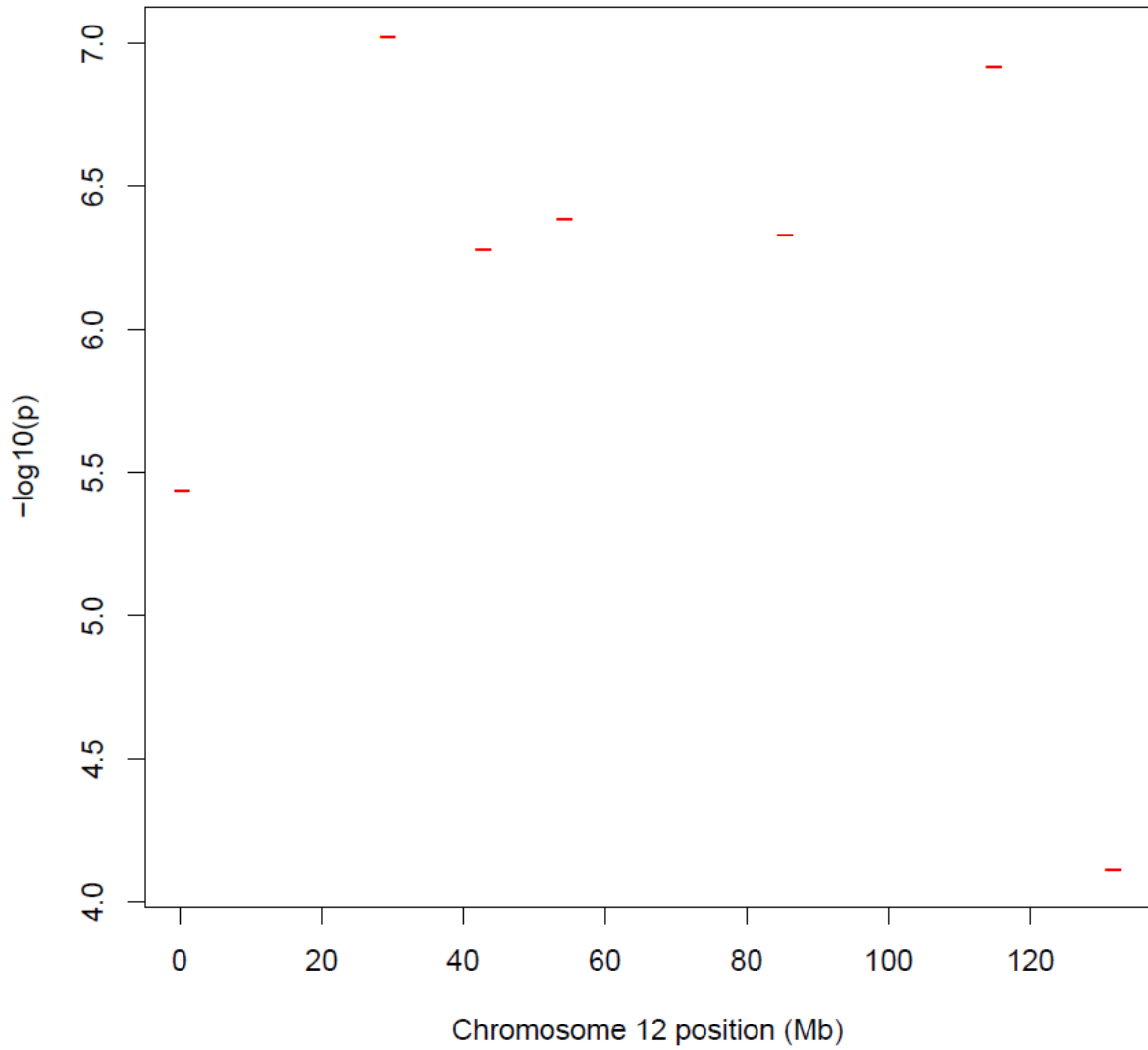
Chromosome 11 DMRs



Supplementary Figure 8 DMRs identified on chromosome 11

DMRs identified between t(1;11) carriers and non-carriers on chromosome 11. Chromosomal position in megabases (Mb) is shown along the X-axis while $-\log_{10}$ p-value is shown along the Y-axis. The red vertical line represents the t(1;11) breakpoint on chromosome 11.

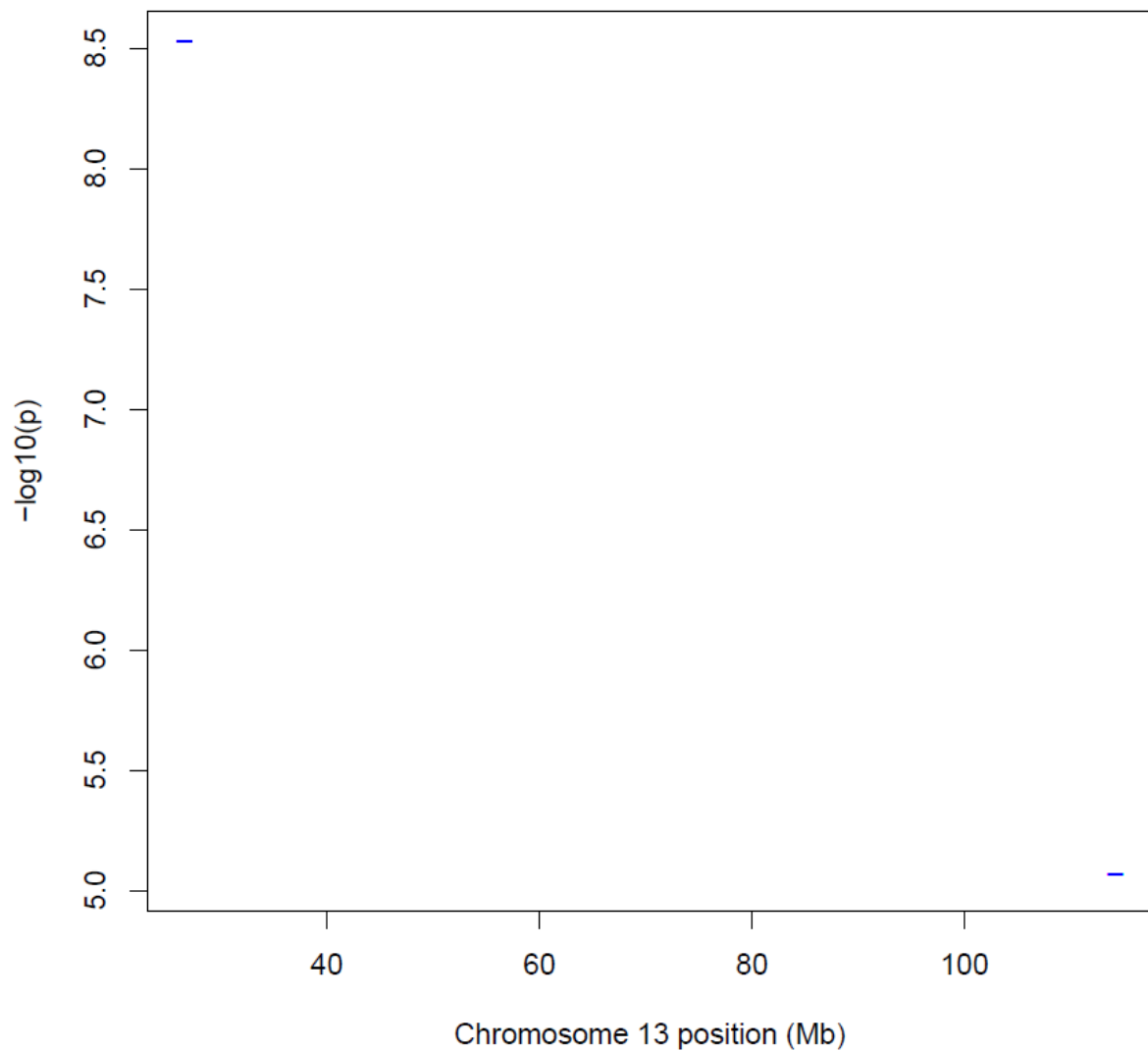
Chromosome 12 DMRs



Supplementary Figure 9 DMRs identified on chromosome 12

DMRs identified between t(1;11) carriers and non-carriers on chromosome 12. Chromosomal position in megabases (Mb) is shown along the X-axis while $-\log_{10}$ p-value is shown along the Y-axis.

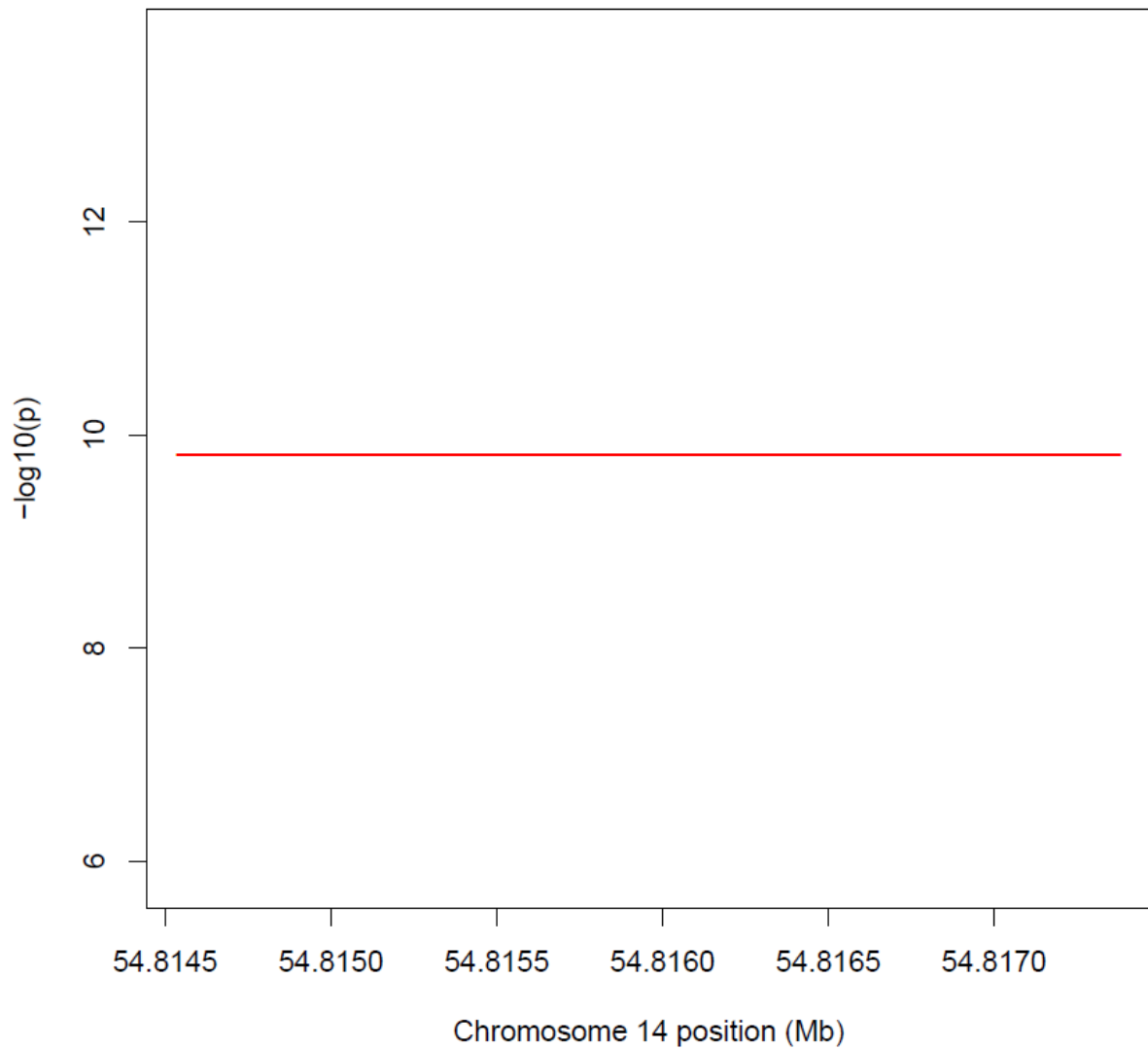
Chromosome 13 DMRs



Supplementary Figure 10 DMRs identified on chromosome 13

DMRs identified between t(1;11) carriers and non-carriers on chromosome 13. Chromosomal position in megabases (Mb) is shown along the X-axis while $-\log_{10}$ p-value is shown along the Y-axis.

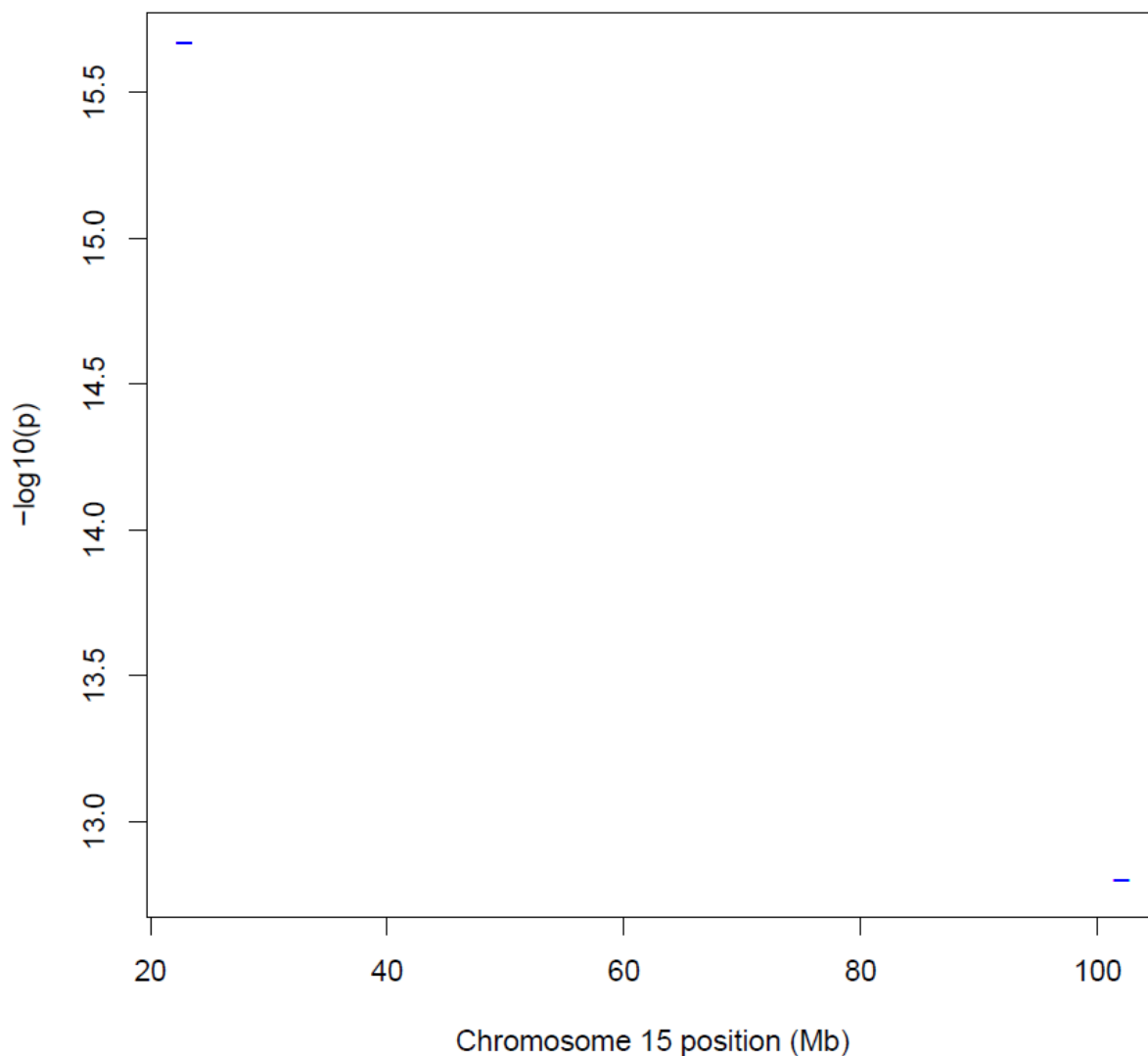
Chromosome 14 DMRs



Supplementary Figure 11 DMR identified on chromosome 14

DMR identified between t(1;11) carriers and non-carriers on chromosome 14. Chromosomal position in megabases (Mb) is shown along the X-axis while $-\log_{10}$ p-value is shown along the Y-axis.

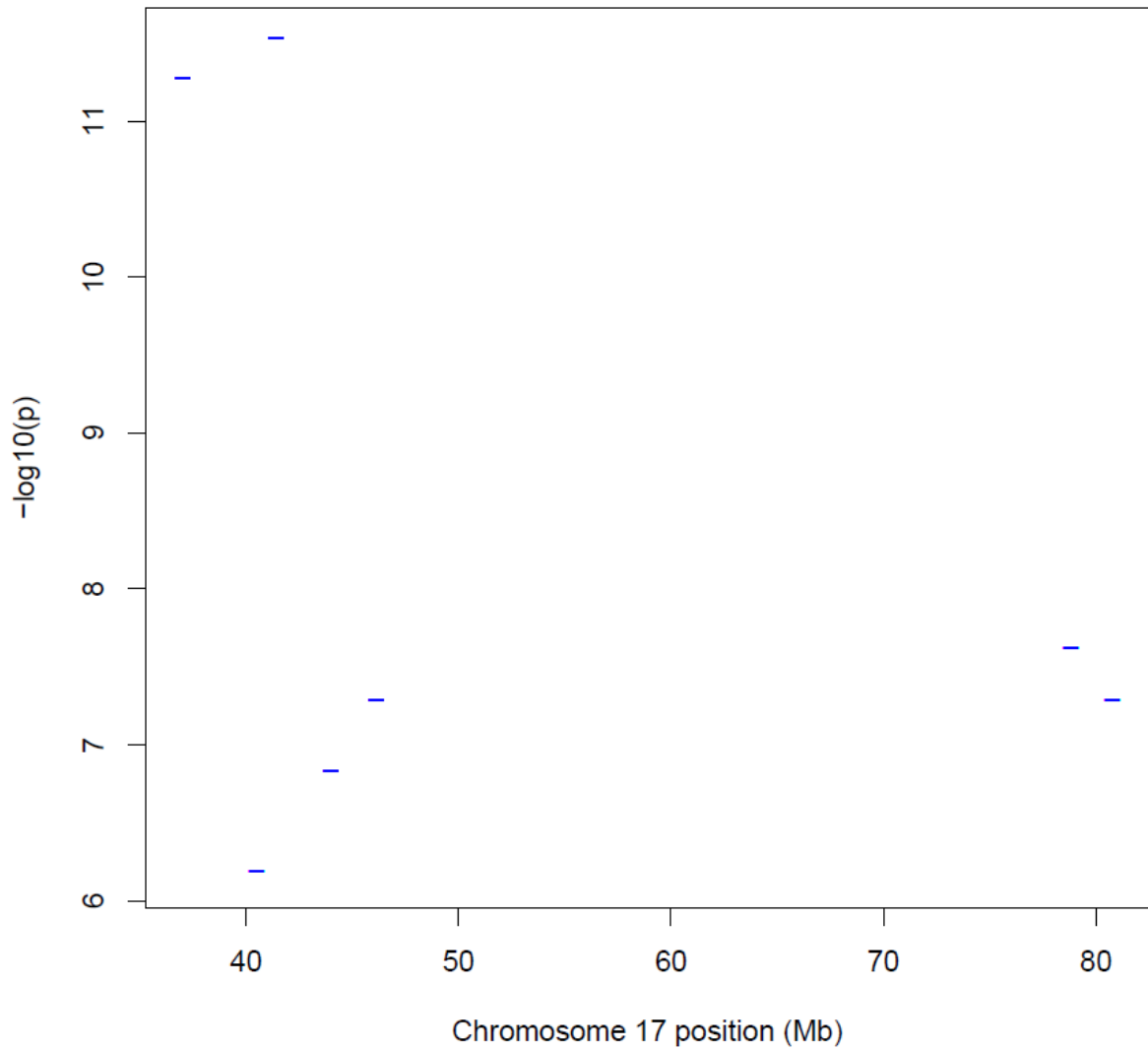
Chromosome 15 DMRs



Supplementary Figure 12 DMRs identified on chromosome 15

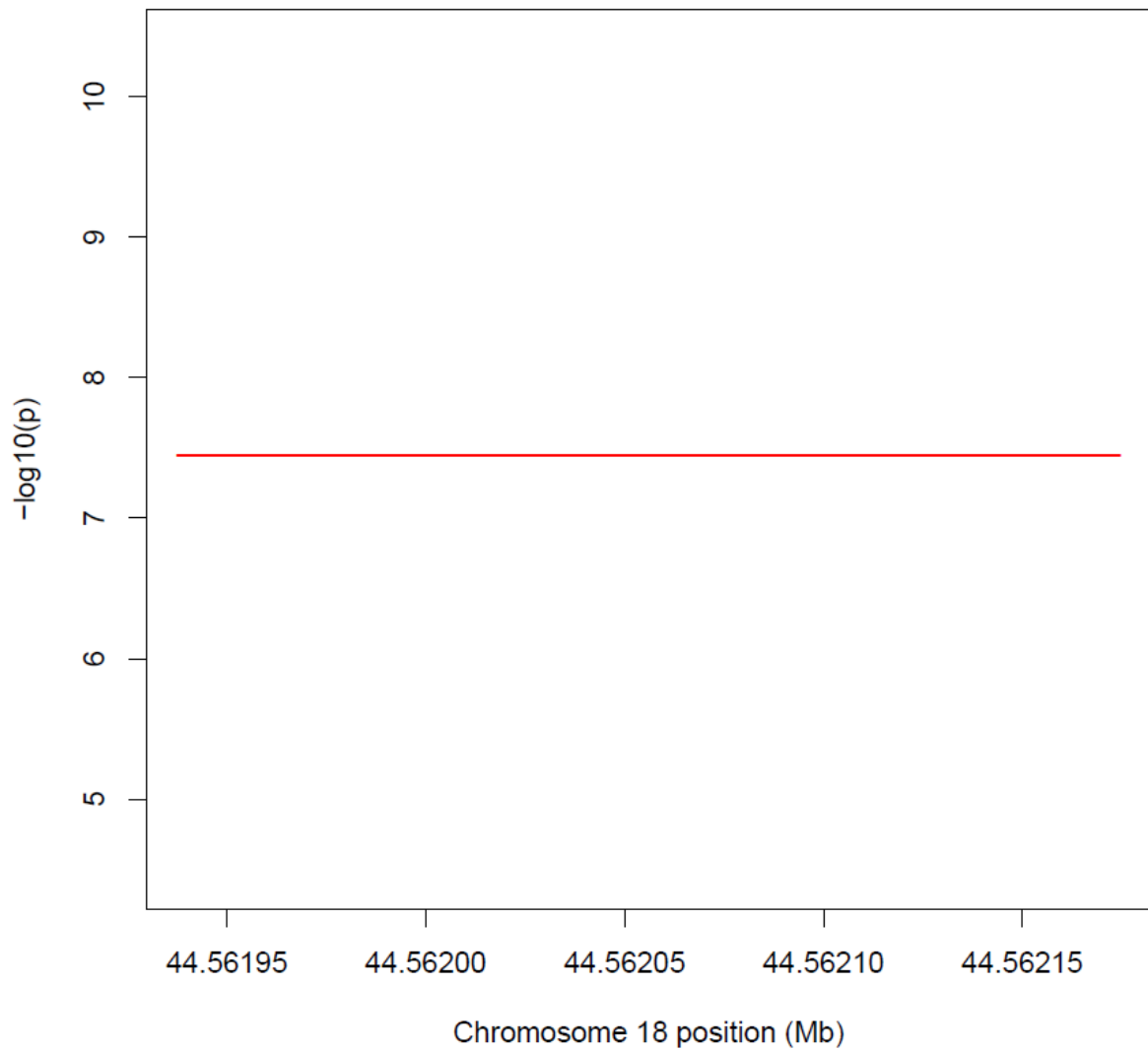
DMRs identified between t(1;11) carriers and non-carriers on chromosome 15. Chromosomal position in megabases (Mb) is shown along the X-axis while $-\log_{10}$ p-value is shown along the Y-axis.

Chromosome 17 DMRs



Supplementary Figure 13 DMRs identified on chromosome 17
DMRs identified between t(1;11) carriers and non-carriers on chromosome 17. Chromosomal position in megabases (Mb) is shown along the X-axis while $-\log_{10}$ p-value is shown along the Y-axis.

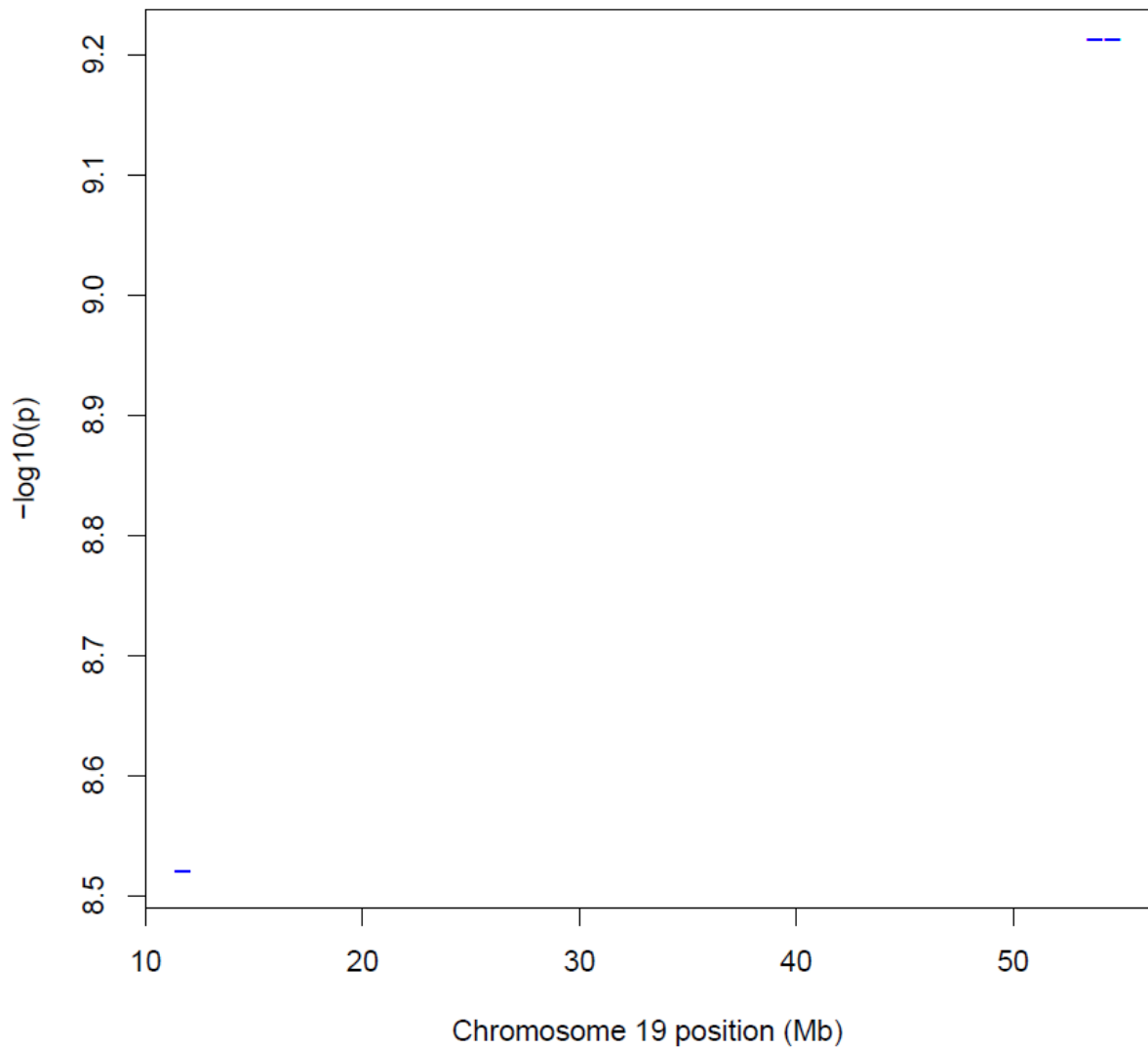
Chromosome 18 DMRs



Supplementary Figure 14 DMR identified on chromosome 18

DMR identified between t(1;11) carriers and non-carriers on chromosome 18. Chromosomal position in megabases (Mb) is shown along the X-axis while $-\log_{10}$ p-value is shown along the Y-axis.

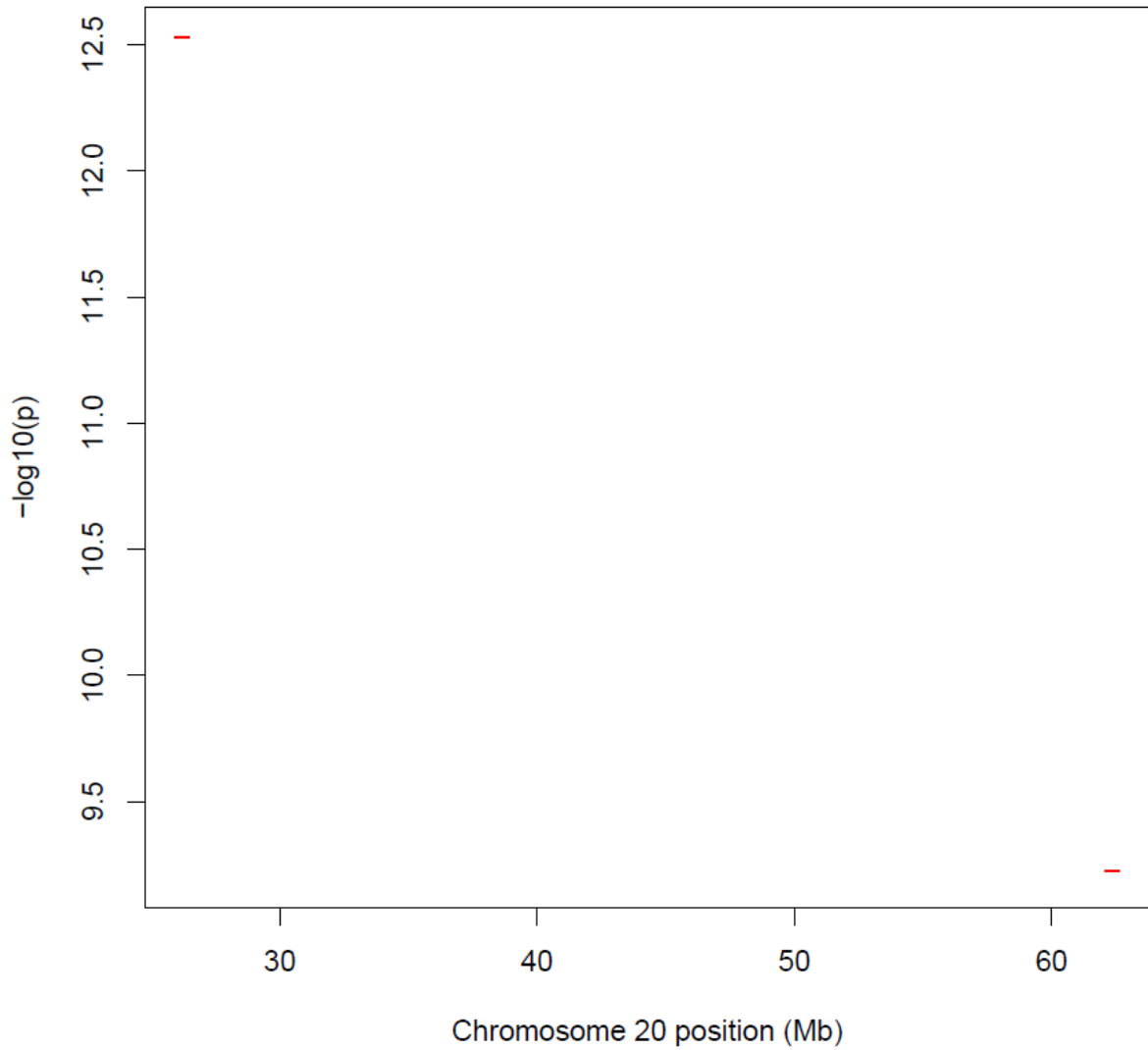
Chromosome 19 DMRs



Supplementary Figure 15 DMRs identified on chromosome 19

DMRs identified between t(1;11) carriers and non-carriers on chromosome 19. Chromosomal position in megabases (Mb) is shown along the X-axis while $-\log_{10}$ p-value is shown along the Y-axis.

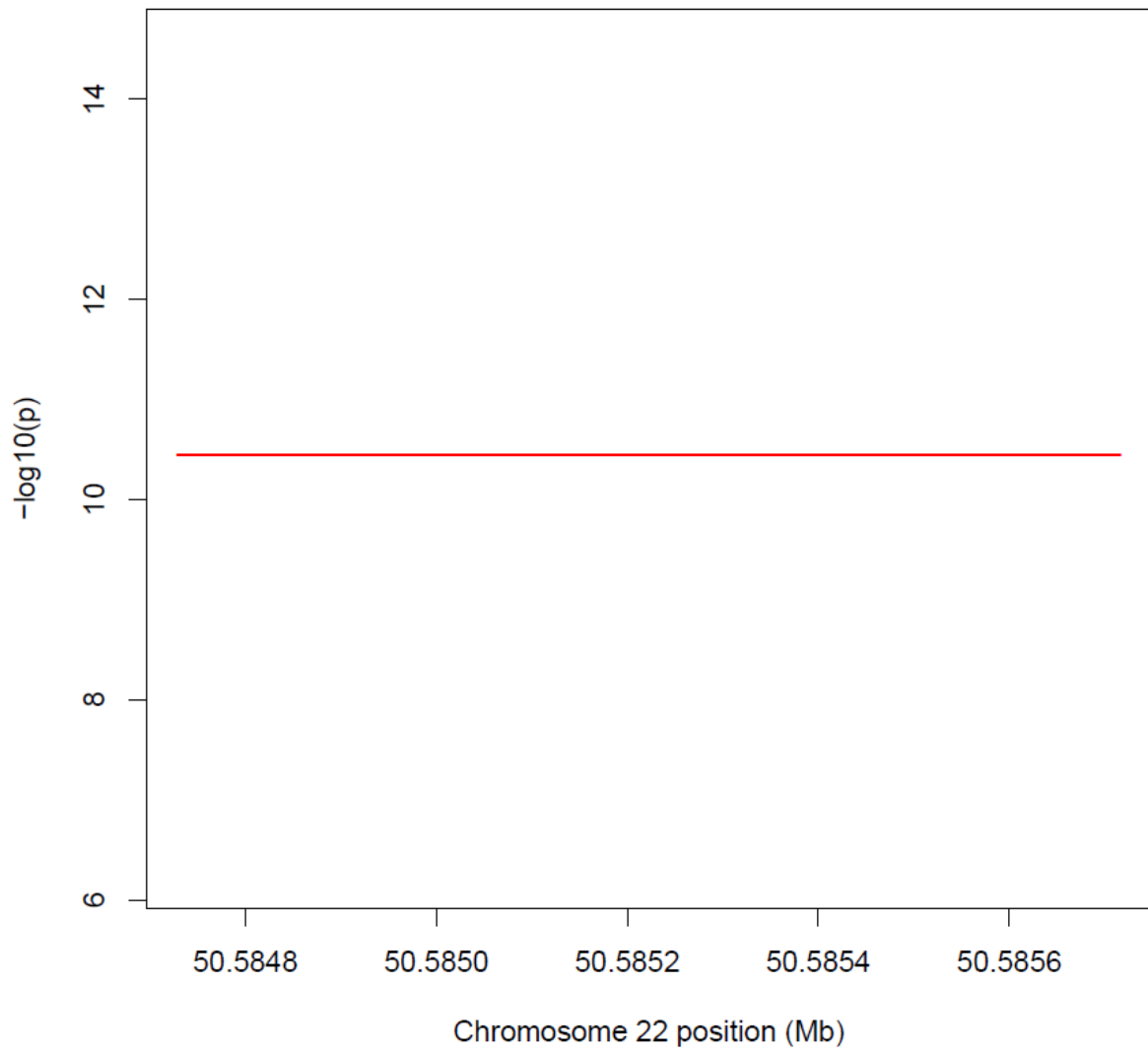
Chromosome 20 DMRs



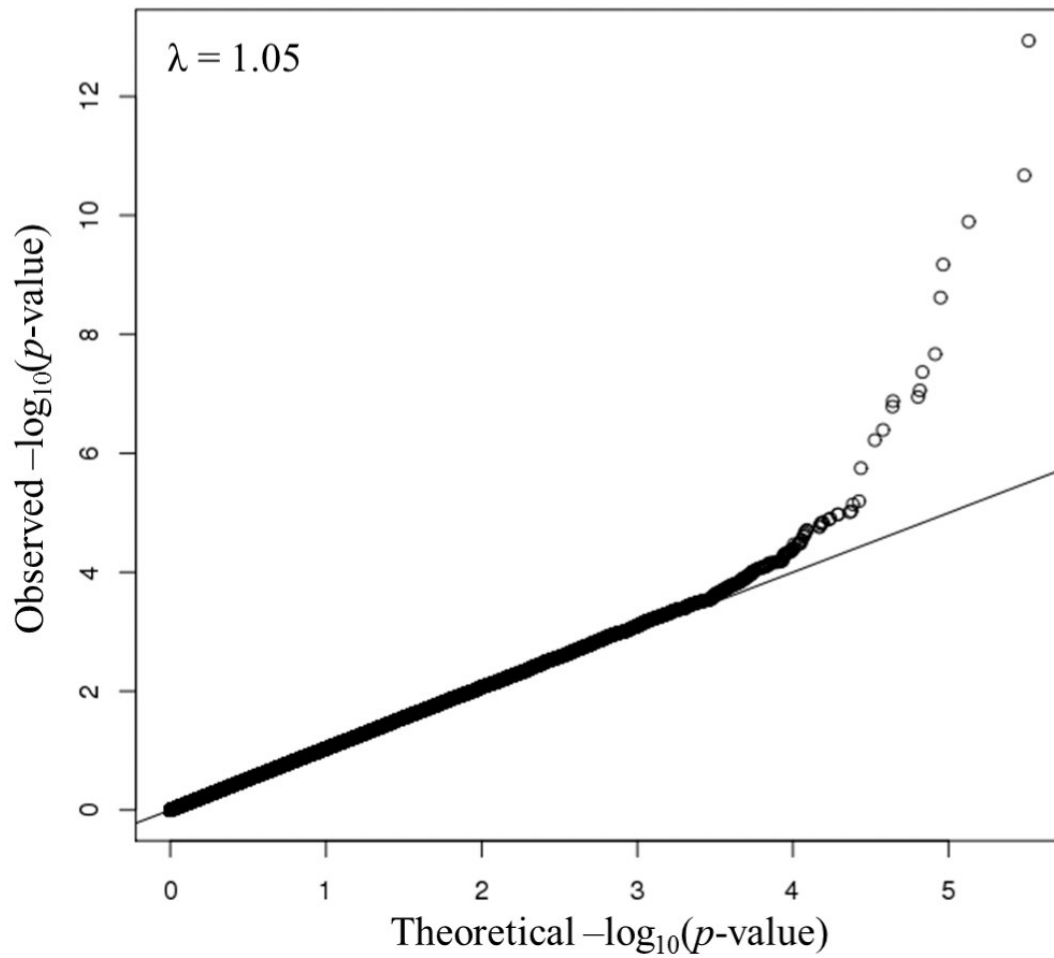
Supplementary Figure 16 DMRs identified on chromosome 20

DMRs identified between t(1;11) carriers and non-carriers on chromosome 20. Chromosomal position in megabases (Mb) is shown along the X-axis while $-\log_{10}$ p-value is shown along the Y-axis.

Chromosome 22 DMRs



Supplementary Figure 17 DMRs identified on chromosome 22
DMRs identified between t(1;11) carriers and non-carriers on chromosome 22. Chromosomal position in megabases (Mb) is shown along the X-axis while $-\log_{10}$ p-value is shown along the Y-axis.



Supplementary Figure 18 Quantile-quantile plot showing observed vs. expected p -values for differential methylation between t(1;11) carriers and non-carriers

Shown are observed raw $-\log_{10} p$ -values (y-axis; circular points) plotted against the expected distribution of $-\log_{10} p$ -values under the null hypothesis (x-axis; solid diagonal line). The genomic inflation factor (λ) is presented in the upper-left corner of the plot.