

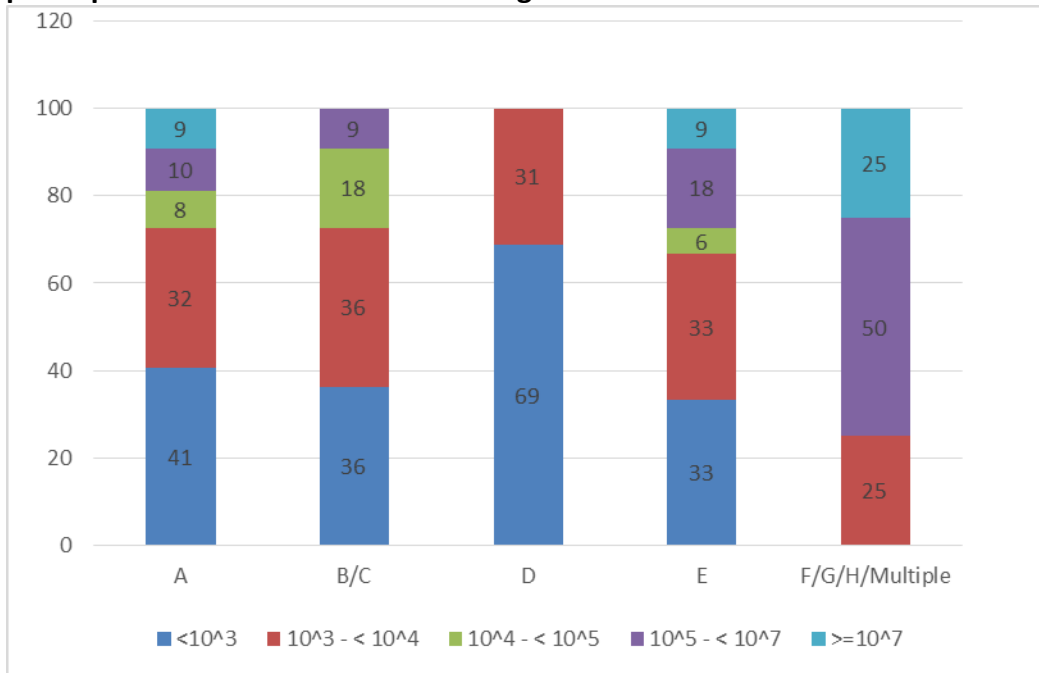
WEB MATERIAL

Web Table 1. Subgenotype data by the place of birth.

		USAA N=57	East African FBAA N=112	West African FBAA N=54	Other FBAA N=14
Genotype	Subgenotype	N=42	N=75	N=43	N=11
A	A1	2(5%)	55(73%)	4(9%)	8(73%)
	A2	35(83%)	1(1%)	3(7%)	1(9%)
	A3	0(0%)	0(0%)	2(5%)	0(0%)
	A5	0(0%)	0(0%)	1(2%)	0(0%)
B	B1	1(2%)	0(0%)	0(0%)	0(0%)
	B2	0(0%)	2(3%)	1(2%)	0(0%)
	B4	0(0%)	0(0%)	1(2%)	1(9%)
C	C1	1(2%)	0(0%)	0(0%)	0(0%)
	C2	1(2%)	1(1%)	0(0%)	0(0%)
D	Dx	0(0%)	4(5%)	2(5%)	0(0%)
	D1	0(0%)	2(3%)	0(0%)	0(0%)
	D2	0(0%)	1(1%)	0(0%)	0(0%)
	D3	0(0%)	1(1%)	0(0%)	0(0%)
	D4	0(0%)	2(3%)	0(0%)	0(0%)
	D6	0(0%)	1(1%)	0(0%)	0(0%)
	D7	0(0%)	3(4%)	0(0%)	0(0%)
E		0(0%)	1(1%)	28(65%)	1(9%)
F/G/H/Multiple		2(5%)	1(1%)	1(2%)	0(0%)

The subscript x denotes that subgenotype was not determined.

Web Figure 1: Comparison of HBV DNA (IU/mL) levels across different genotypes (p=0.2), where colors represent HBV DNA categories and numbers represent the percentages of participants in different HBV DNA categories.



Web Table 2. Univariate analysis comparing median ALT (in multiples of ULN) among participant groups stratified by various patient characteristics, where ULN equals 30 U/L for males and 20 U/L for females.

Variable		N	Median ALT (25 th - 75 th percentile) in ULN	p
Overall		228	1.2 (0.8,1.7)	NA
Birthplace	US	56	1.2 (0.9,2.3)	<.001
	E Africa	104	1.0 (0.7,1.3)	
	W Africa	54	1.5 (1.0,2.2)	
	Other	14	1.2 (0.9,2.8)	
Sex	Male	126	1.2 (0.9,2.1)	0.02
	Female	102	1.0 (0.8,1.4)	
Age group	18-<40 yrs	92	1.2 (0.9,2.1)	0.01
	40-<60 yrs	108	1.2 (0.9,1.6)	
	60+ yrs	28	0.9 (0.7,1.1)	
Genotype	<u>A</u>	<u>117</u>	<u>1.2 (0.9,1.6)</u>	0.02
	<u>B/C</u>	<u>10</u>	<u>1.2 (0.7,1.5)</u>	
	<u>E</u>	<u>33</u>	<u>1.7 (1.0,3.4)</u>	
	<u>D</u>	<u>15</u>	<u>1.0 (0.6,1.5)</u>	
	<u>F/G/Multiple</u>	<u>4</u>	<u>2.2(1.1,3.3)</u>	
Mode of transmission	Vertical	38	1.2 (1.0,2.1)	0.006
	Sexual	24	1.4 (1.0,3.2)	
	Other horizontal	111	1.1 (0.7,1.4)	
History of Injection drug use	No	223	1.1 (0.8,1.7)	0.04
	Yes	4	2.5 (1.6,4.3)	
History of Intranasal illicit drug use	No	217	1.1 (0.8,1.6)	0.07
	Yes	9	1.9 (1.2,3.1)	
History of Blood transfusion	No	193	1.2 (0.9,1.7)	0.03
	Yes	28	0.9 (0.8,1.2)	
Tattoo	No	200	1.1 (0.8,1.6)	0.03
	Yes	24	1.5 (1.1,2.9)	
History of STD	No	167	1.1 (0.8,1.7)	0.5
	Yes	35	1.2 (0.9,1.9)	
Same sex intercourse	No	204	1.2 (0.8,1.6)	0.3
	Yes	7	1.9 (0.8,2.8)	
HBeAg	Negative/Equivocal	197	1.1 (0.8,1.5)	<.001
	Positive	27	2.8 (1.4,4.1)	
HBV DNA (IU/mL)	<10 ³	114	1.0 (0.8,1.3)	<.001
	10 ³ - < 10 ⁴	59	1.1 (0.8,1.4)	
	10 ⁴ - < 10 ⁵	17	1.2 (1.0,1.7)	
	10 ⁵ - < 10 ⁷	21	2.8 (1.6,5.6)	
	≥ 10 ⁷	15	3.4 (2.8,4.9)	