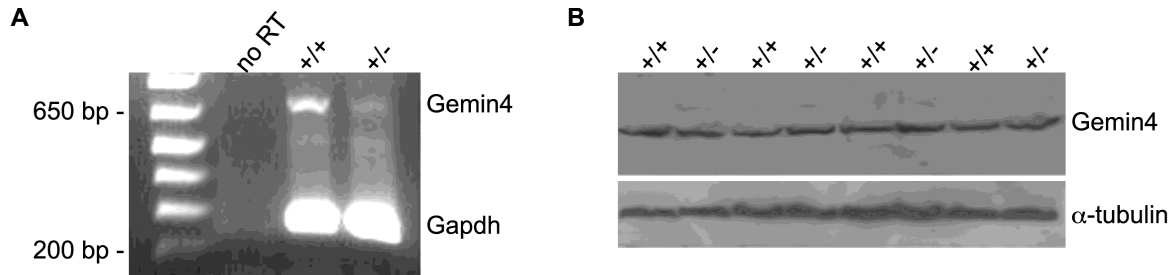


## Supplemental Figure



**Figure S1.** Expression of Gemin4 mRNA and protein. (A) RNA was isolated from livers of P4 *Gemin4*<sup>+/-</sup> and *Gemin4*<sup>+/+</sup> mice and semi-quantitative RT-PCR analysis was performed. Pooled *Gemin4*<sup>+/-</sup> and *Gemin4*<sup>+/+</sup> RNA for no RT control. (B) Western analysis of liver lysates was performed to determine protein levels of Gemin4 in wild-type and heterozygous animals;  $\alpha$ -tubulin was used as a loading control.