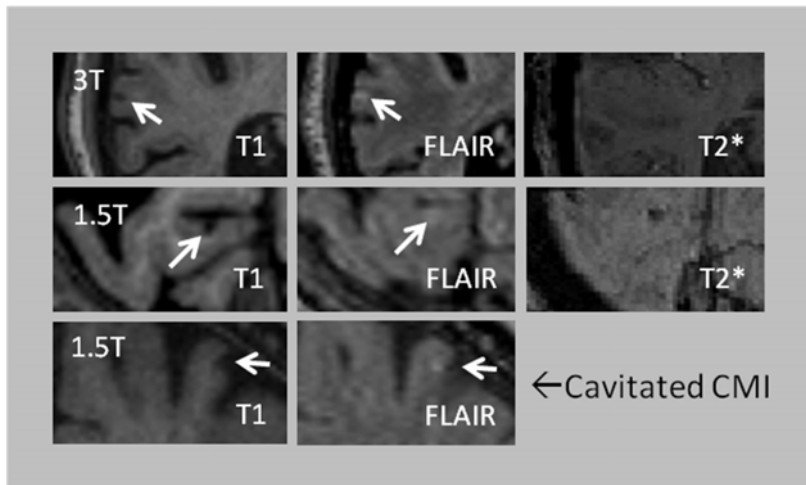


THE LANCET Neurology

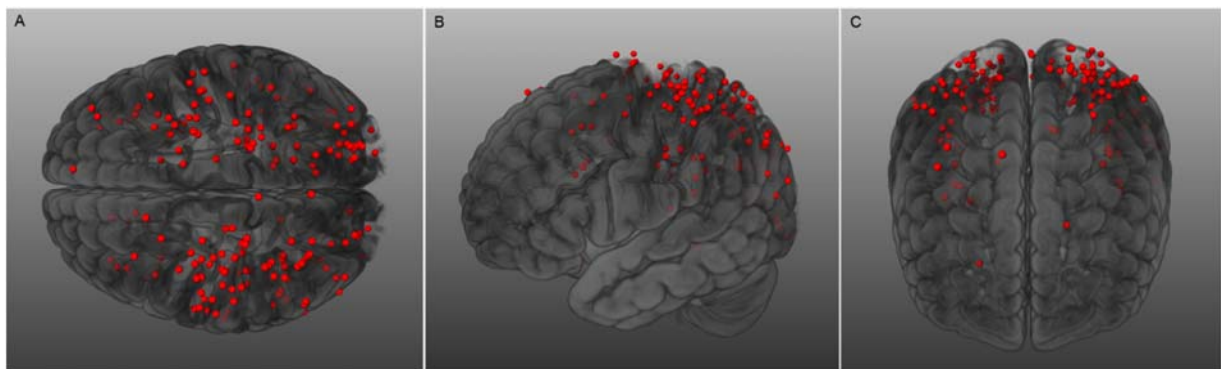
Supplementary appendix

This appendix formed part of the original submission and has been peer reviewed. We post it as supplied by the authors.

Supplement to: van Veluw SJ, Shih AY, Smith EE, et al. Detection, risk factors, and functional consequences of cerebral microinfarcts. *Lancet Neurol* 2017; published online July 14. [http://dx.doi.org/10.1016/S1474-4422\(17\)30196-5](http://dx.doi.org/10.1016/S1474-4422(17)30196-5).



Supplemental Figure 1. Additional examples of cortical cerebral microinfarcts, captured at 3T and 1.5T MRI.



Supplemental Figure 2. A 3D representation of total cortical cerebral microinfarct distribution as detected on 3T MRI in a memory-clinic population. Microinfarcts are represented by red dots in a transversal (A), sagittal (B), and coronal (C) view of the brain. Reproduced from Van Veluw SJ et al,²⁸ by permission of Elsevier.