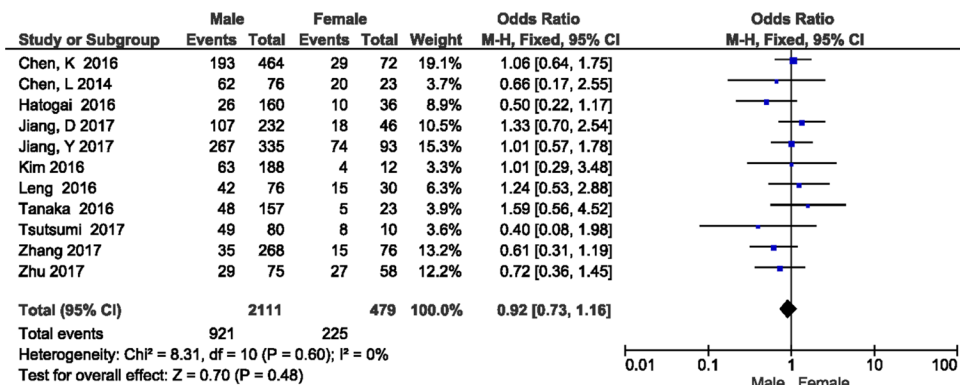
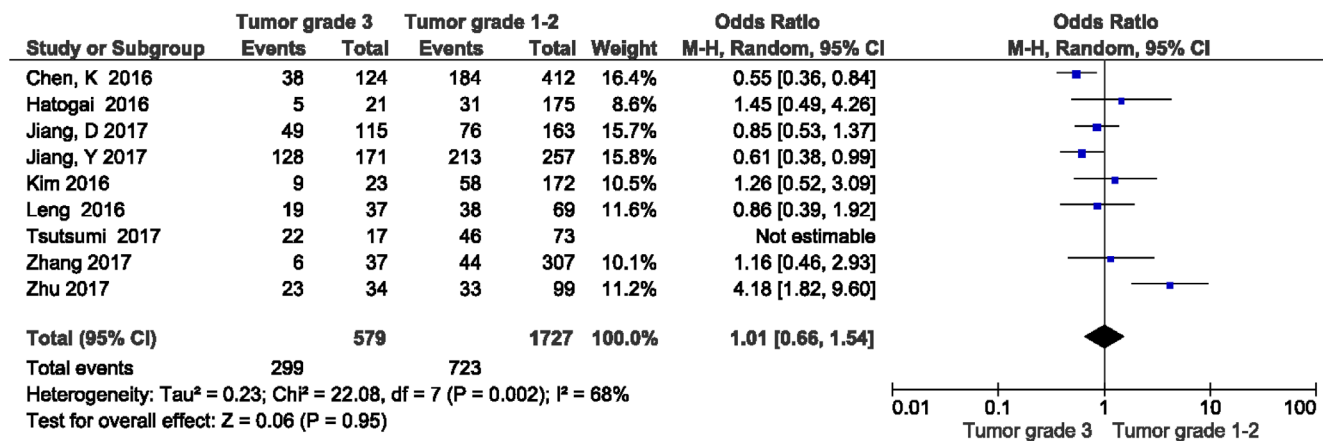


Prognostic value of PD-L1 in esophageal squamous cell carcinoma: a meta-analysis

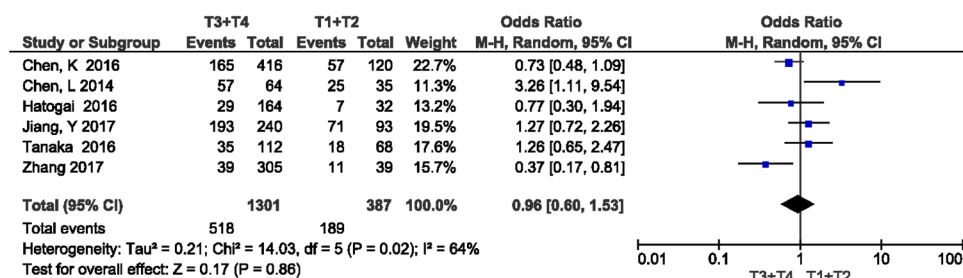
SUPPLEMENTARY MATERIALS



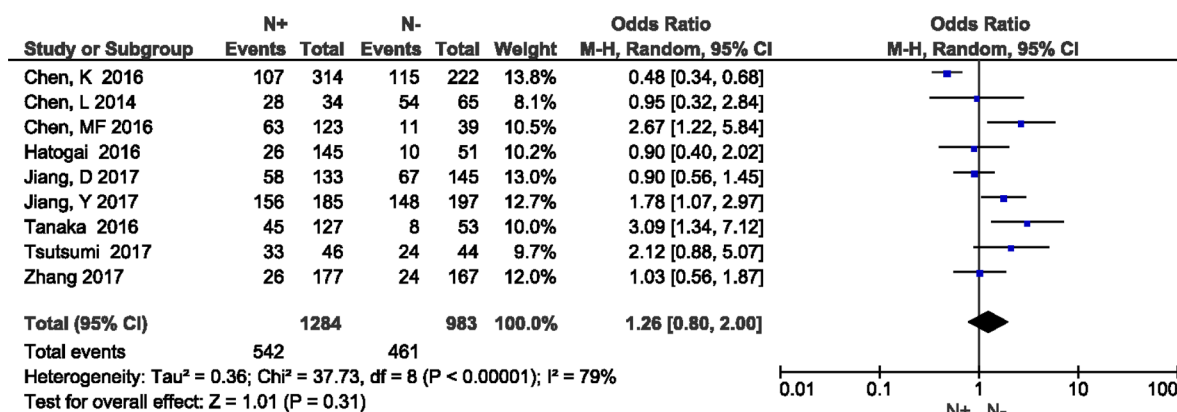
Supplementary Figure 1: Forest plot describing the association between PD-L1 expression and gender.



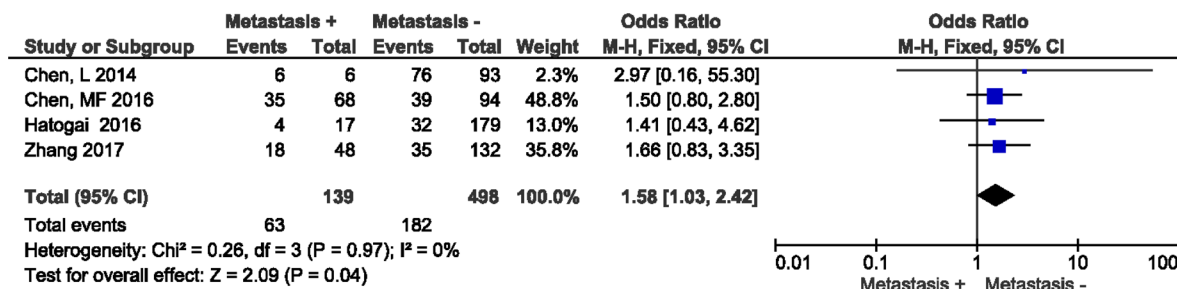
Supplementary Figure 2: Forest plot describing the association between PD-L1 expression and tumor differentiation.



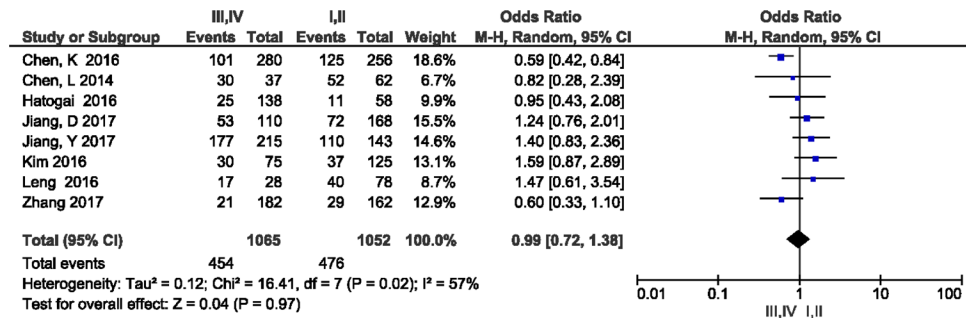
Supplementary Figure 3: Forest plot describing the association between PD-L1 expression and T stage.



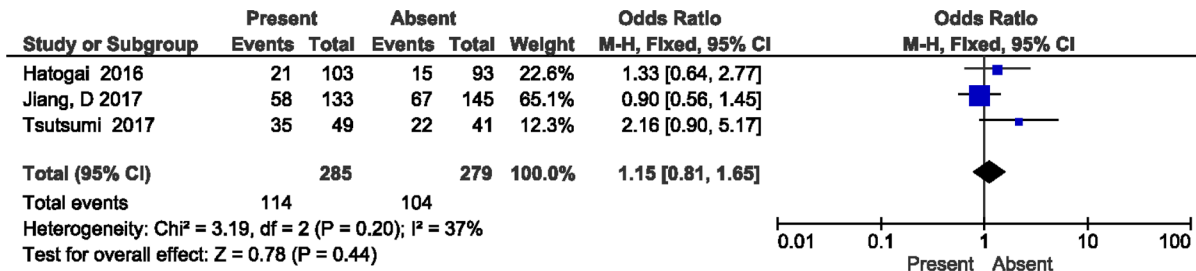
Supplementary Figure 4: Forest plot describing the association between PD-L1 expression and N stage.



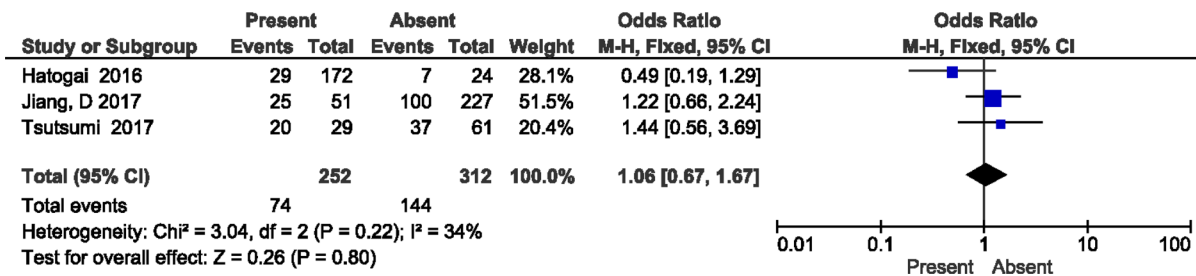
Supplementary Figure 5: Forest plot describing the association between PD-L1 expression and metastasis.



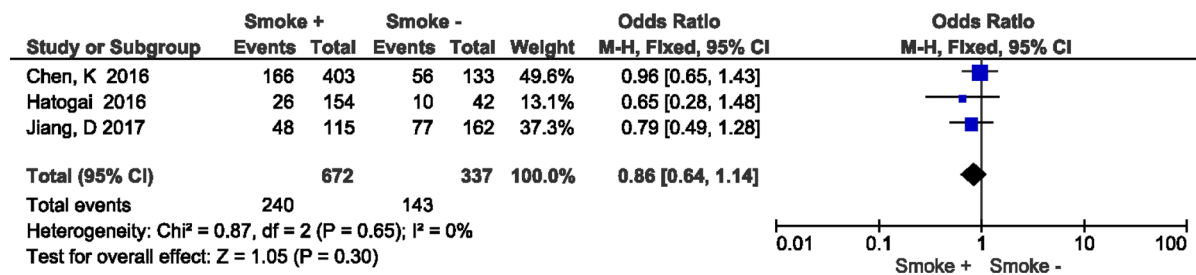
Supplementary Figure 6: Forest plot describing the association between PD-L1 expression and TNM stage.



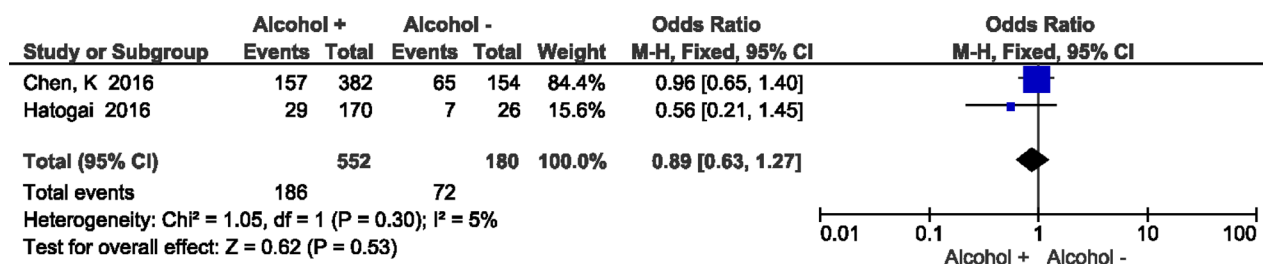
Supplementary Figure 7: Forest plot describing the association between PD-L1 expression and lymphatic invasion.



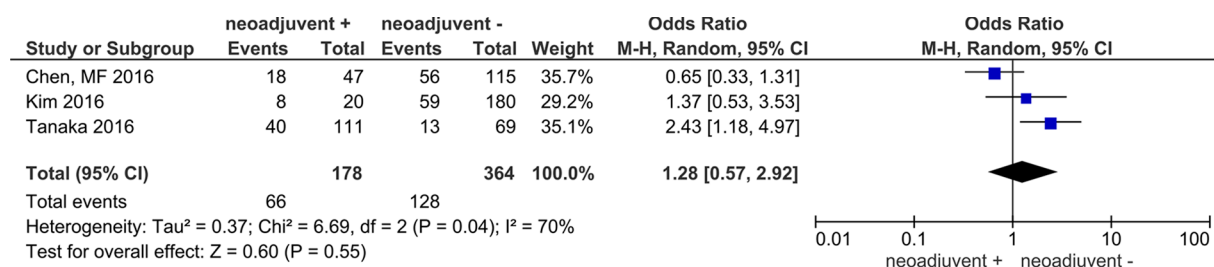
Supplementary Figure 8: Forest plot describing the association between PD-L1 expression and venous invasion.



Supplementary Figure 9: Forest plot describing the association between PD-L1 expression and smoking.



Supplementary Figure 10: Forest plot describing the association between PD-L1 expression and drinking.



Supplementary Figure 11: Forest plot describing the association between PD-L1 expression and neoadjuvant treatment.