

Supplemental Figure

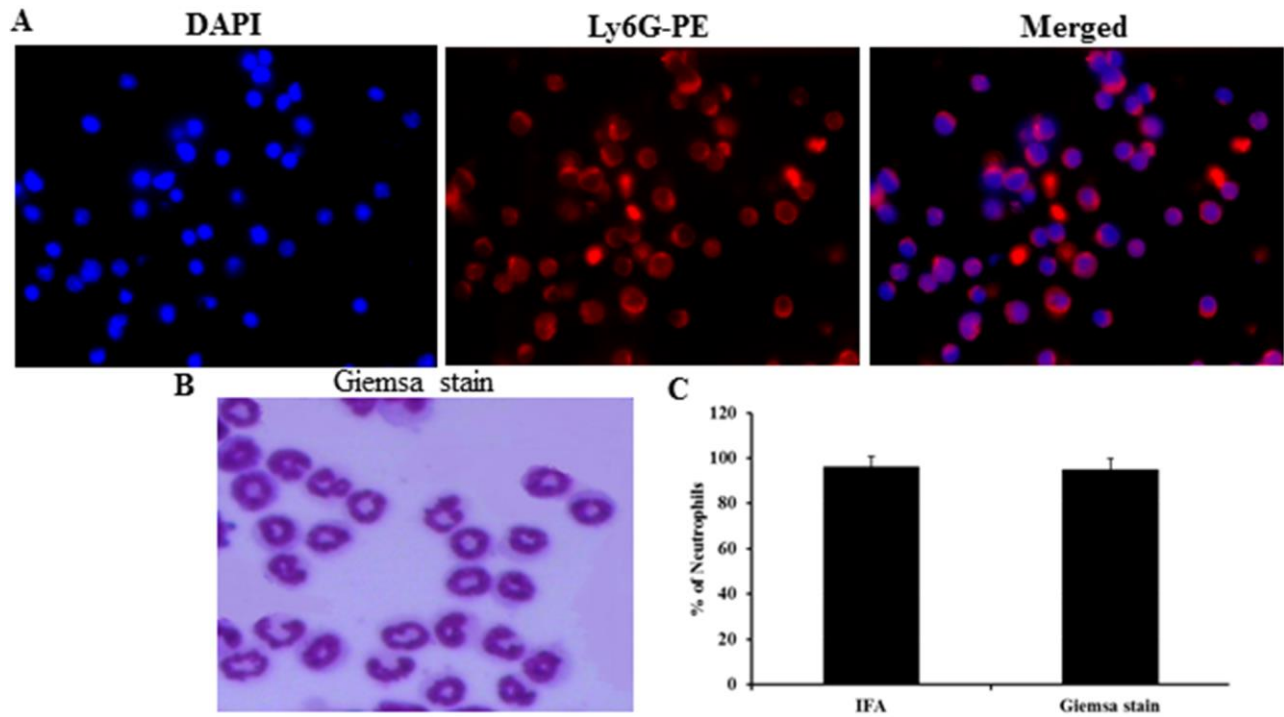


Fig. S1. Analysis of the purity of isolated BMNs by IFA with neutrophil marker Ly-6G and Geimsa staining. **A:** Ly-6G stained neutrophils along with nuclei suggesting 96% cells are neutrophils. **B:** Geimsa stained neutrophils showing purple donut shaped nuclei. **C:** Percentage of Ly-6G or Geimsa stained cells. A total of 200 cells were counted per coverslip on three separate slips. Results are expressed as percent stained cells.