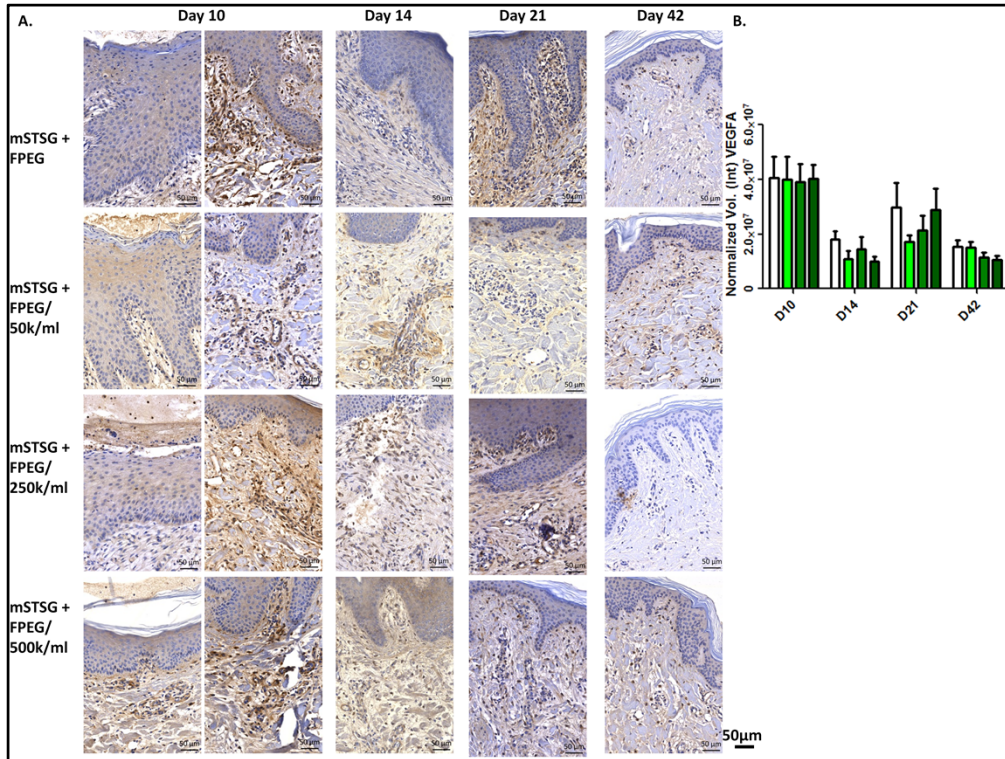


Supplemental Figure 1. Quantification of Epithelial thickness on day 10. (A)

Representative pictures of trichrome images of the epithelium on day 10. Triplicate measurements of epithelial thickness for areas of graft and areas of granulation tissue are shown. (Scale bars are 200µm) (B) Quantification of epithelial thickness shows that treatment with 500K pASCs/mL was the only group not significantly different than grafted areas. (**-P<0.01, ***-P<0.001, n=6/group). Dotted line represents the average for grafted areas (183 ± 10.4µm), which was not different between groups and thus, pooled.



Supplemental Figure 2. VEGF localization and expression. (A) Representative images of both the epithelium (left) and grafted (right) areas at day 10 shows minimal VEGF expression in the epithelium compared to the junction of the grafts. VEGF staining over time shows that expression is lower on days 14 and 42 in all groups, which is also evidenced by the quantified Western Blot (B). (Scale bars are 50 μm).