

## SUPPLEMENTARY INFORMATION

**Table S1. Primary antibodies used for immunohistochemistry and immunofluorescence**

Antibody	Clone	Isotype	Species	Dilution
IRF5 Proteintech 10547-1-AP		IgG	rabbit	1:100
CD163 LS-Biosciences LS_C174770	34B	IgG <sub>2a</sub>	mouse	1:150
CD206 Abcam Ab117644	5C11	IgG <sub>1</sub>	mouse	1:200
CD68 Dako M0814	KP1	IgG <sub>1</sub>	mouse	1:50
CD14 Proteintech 17000-1-AP		IgG	rabbit	1:50
Podoplanin (PDPN) Abcam Ab10288	18H5	IgG <sub>1</sub>	mouse	1:100
CD248 (TEM1) Abcam Ab204914	EPR17081	IgG	rabbit	1:1000
CD106 (VCAM-1) LS-Biosciences LS_C313019		IgG	rabbit	1:100
TLR4 Abcam Ab22048	76B357.1	IgG <sub>2b</sub>	mouse	1:200
CD31 Abcam Ab187377	[C31.3]	IgG <sub>1</sub>	mouse	1:150

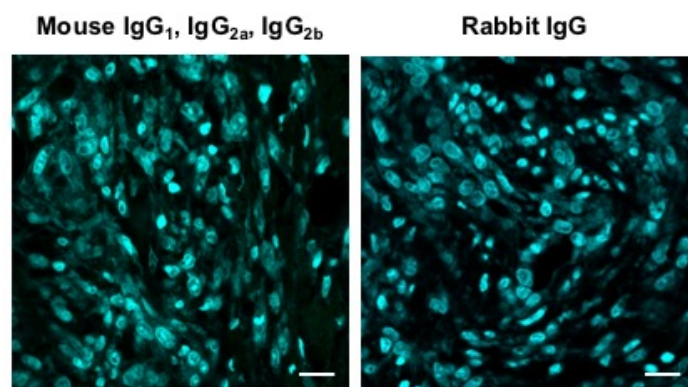
**Table S2. Primers used for quantitative polymerase chain reaction.**

<b>Gene Symbol</b>	<b>Gene Description</b>	<b>Sequence</b>
<i>β-actin</i>	Actin, beta	Qiagen QT00095431
<i>GAPDH</i>	glyceraldehyde-3-phosphate dehydrogenase	Qiagen QT00079247
<i>PDPN</i>	Podoplanin	Qiagen QT01015084
<i>CD248</i>	CD248 molecule (endosialin)	Qiagen QT00216356
<i>CD106</i>	CD106 molecule (VCAM)	Qiagen QT00018347
<i>PTGS2</i>	Prostaglandin-endoperoxide synthase 2	Qiagen QT00040586
<i>IL-8 (CXCL8)</i>	Interleukin 8	Qiagen QT00000322
<i>IRF1</i>	Interferon regulatory factor 1	CTGTGCGAGTGTACCGGATG ATCCCCACATGACTTCCTCTT
<i>IRF5</i>	Interferon regulatory factor 5	GGGCTTCAATGGGTCAACG GCCTTCGGTGTATTTCCCTG
<i>CXCL10</i>	Chemokine (C-X-C motif) ligand 10	TCCACGTGTTGAGATCATTGC TCTTGATGGCCTTCGATTCTG
<i>ALOX15</i>	Arachidonate 15-lipoxygenase	GGGCAAGGAGACAGAACTCAA GCCGATCCACACGGAGTACT
<i>CD206</i>	CD206 molecule (mannose receptor)	Qiagen QT00012810
<i>CD163</i>	CD163 molecule	Qiagen QT00074641

**Table S3. Antibodies used for flow cytometry.** All antibodies were diluted 1:50 for staining.

Antibody	Catalog #	Clone
PDPN Alexa Fluor 488 anti-human	337005 BioLegend	NC08
Alexa Fluor 488 Rat IgG2 $\alpha$ isotype	400525 BioLegend	RTK2758
CD34 PerCP/Cy5.5 anti-human	343521 BioLegend	581
PerCP/Cy5.5 mouse IgG1 $\kappa$ isotype	400149 BioLegend	MOPC-21
CD45 BV605 anti-human	304041 BioLegend	H130
BV605 mouse IgG1 $\kappa$ isotype	400161 BioLegend	MOPC-21

**Figure S1**



**Figure S1** Isotype control staining of diseased Achilles tendons. Representative confocal immunofluorescence images showing merged image of diseased Achilles tendon sections stained with Isotype control antibodies for mouse IgG1, IgG2a, IgG2b and rabbit IgG fractions. Cyan represents POPO-1 nuclear counterstain. Scale bar, 20 $\mu$ m.