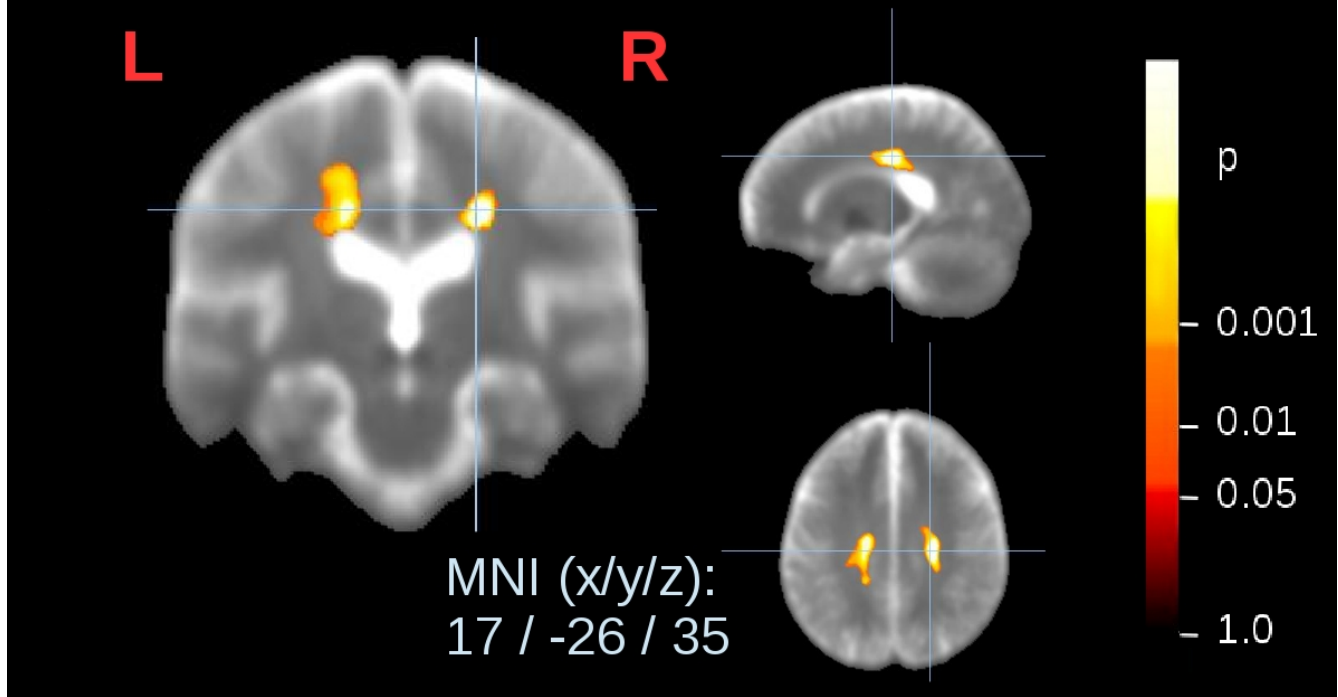


Significant voxelwise correlation of Δ FA and Δ ALS-FRS-R of 67 ALS patients



Supplementary Figure 2. Voxelwise Pearson correlation (FDR-corrected at $p < 0.05$) of FA differences (Δ FA) and ALS-FRS-R differences (Δ ALS-FRS-R) revealed clusters in the left upper CST ($p < 0.00001$, MNI -22/-26/37, 4754 voxels) and in the right upper CST ($p < 0.00001$, MNI 17/-26/35, 2404 voxels).