

1 **Appendix**

2

3 *Search strategy:*

4 Medline: (exp HIV-1/ OR HIV-1.mp.) AND (Xpert.mp. OR GeneXpert.mp. OR Cepheid.mp.)

5

6 Embase: (exp Human immunodeficiency virus 1/ OR HIV-1.mp.) AND (Xpert.mp. OR GeneXpert.mp. OR

7 Cepheid.mp.)

8

9 Global Health: (HIV-1.mp.) AND (Xpert.mp. OR GeneXpert.mp. OR Cepheid.mp.)

10

11 *Extracted variables:*

12 First author

13 Study year

14 Location (country of experiment, if multiple will record all)

15 Source population

16 Avg. patient age

17 Percentage female

18 Percentage on ART

19 Sample size (# samples tested by both reference and index test)

20 Index test

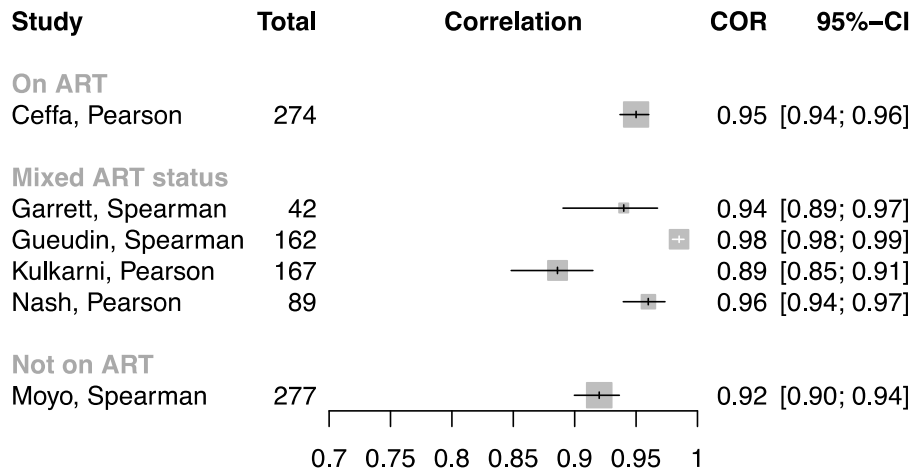
21 Proportion patients w/ valid index test results

22 Reference test

23 Proportion patients w/ valid reference test results

24 Proportion of reference quantifiable samples that were quantifiable with index

- 25 Did any included participants not receive the reference test
- 26 Did any included participants not receive the index test
- 27 Were any patients excluded from the analysis
- 28 Proportion samples with invalid Xpert HIV-1 viral load results
- 29 Reasons for exclusion
- 30 Type of correlation
- 31 Number of samples used for correlation (ie quantifiable results)
- 32 Correlation on viral load
- 33 Correlation CI lower level
- 34 Correlation CI upper level
- 35 Correlation p value
- 36 Number of samples used for BA analysis correlation
- 37 Bland-Altman threshold
- 38 Bland-Altman agreement
- 39 Bland-Altman lower limit of 95% agreement
- 40 Bland-Altman upper limit of 95% agreement
- 41 Other method reported
- 42 Other method mean
- 43 Other method SD/confidence interval
- 44
- 45
- 46
- 47
- 48

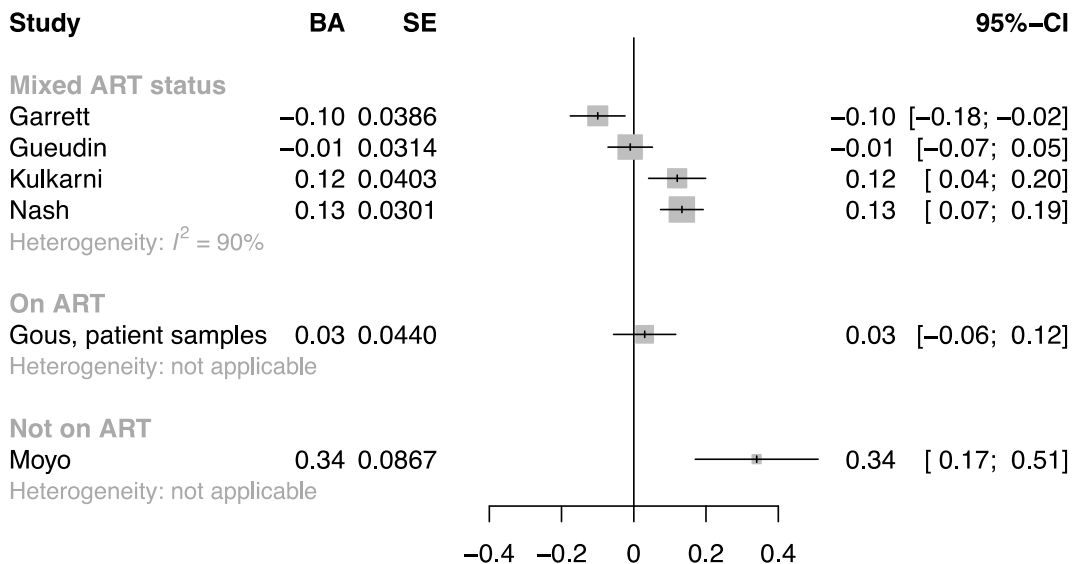


49

50 **Figure S1.** Forest plot for Pearson and Spearman correlation coefficients from comparison of VL values
 51 by Xpert and a reference test for VL stratified by patient ART status. Studies where ART status was not
 52 reported were excluded.

53

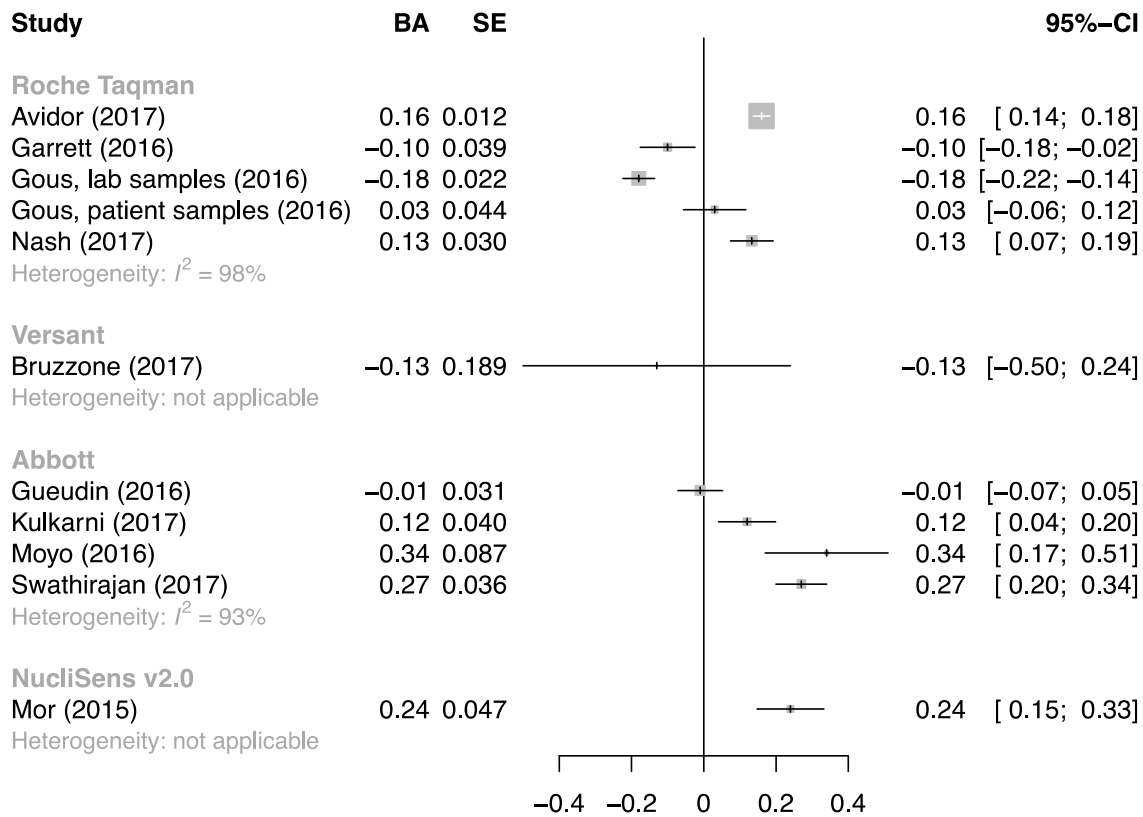
54



55

56 **Figure S2.** Forest plot for Bland-Altman (BA) correlation coefficients from comparison of VL values by
 57 Xpert and a reference test for VL stratified by patient ART status. Studies where ART status was not
 58 reported were excluded.

59



60

61 **Figure S3.** Forest plot for Bland-Altman (BA) correlation coefficients from comparison of VL values by
 62 Xpert and a reference test for VL stratified by reference test. Full names and manufacturers of reference
 63 tests are as follows: Abbot = Abbott RealTime HIV-1 m2000rt, Abbott Molecular. Roche Taqman =
 64 COBAS® AmpliPrep / COBAS® TaqMan®, Roche Diagnostics. Versant = NucliSENS EasyQ® HIV-1 v2.0,
 65 bioMérieux, VERSANT HIV-1 RNA 1.5 Assay, Siemens HealthCare Diagnostics

66

67

68