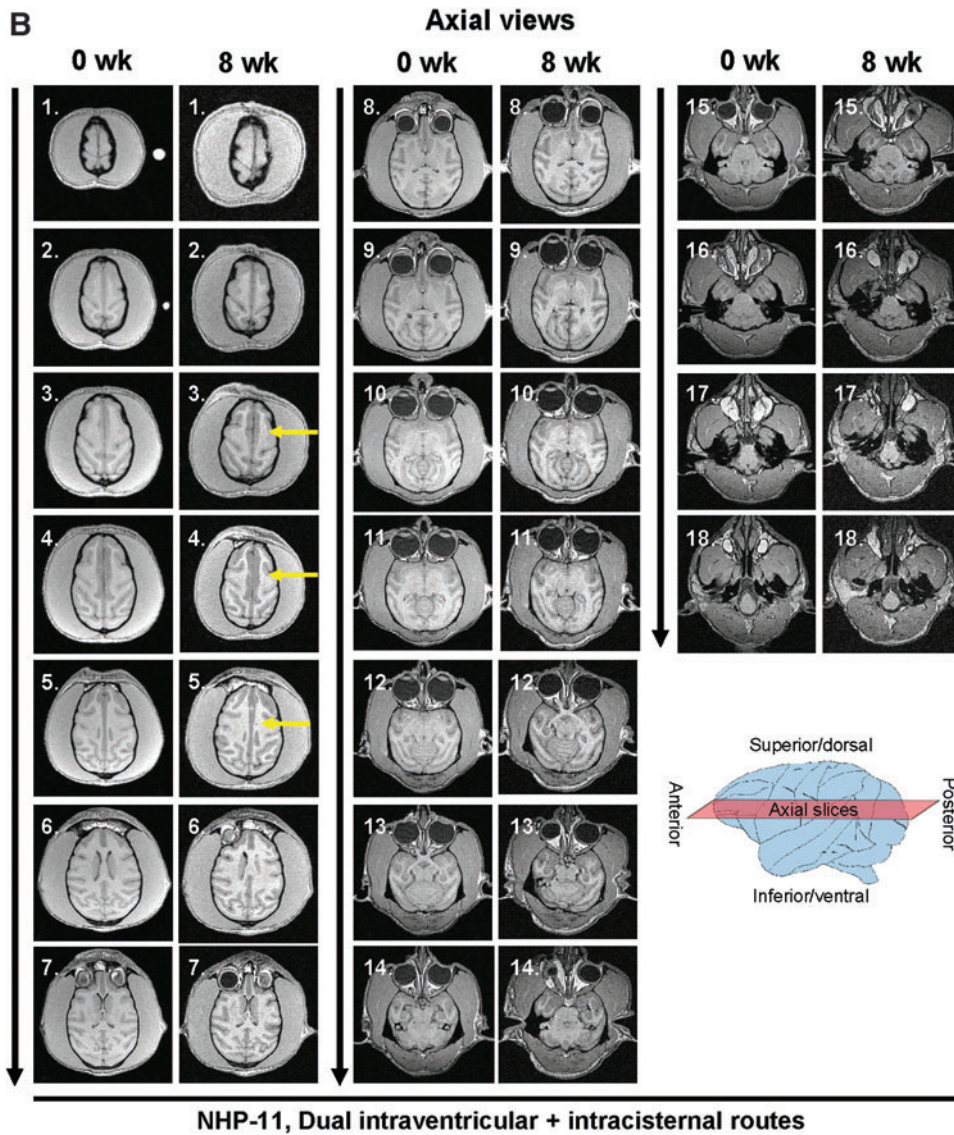
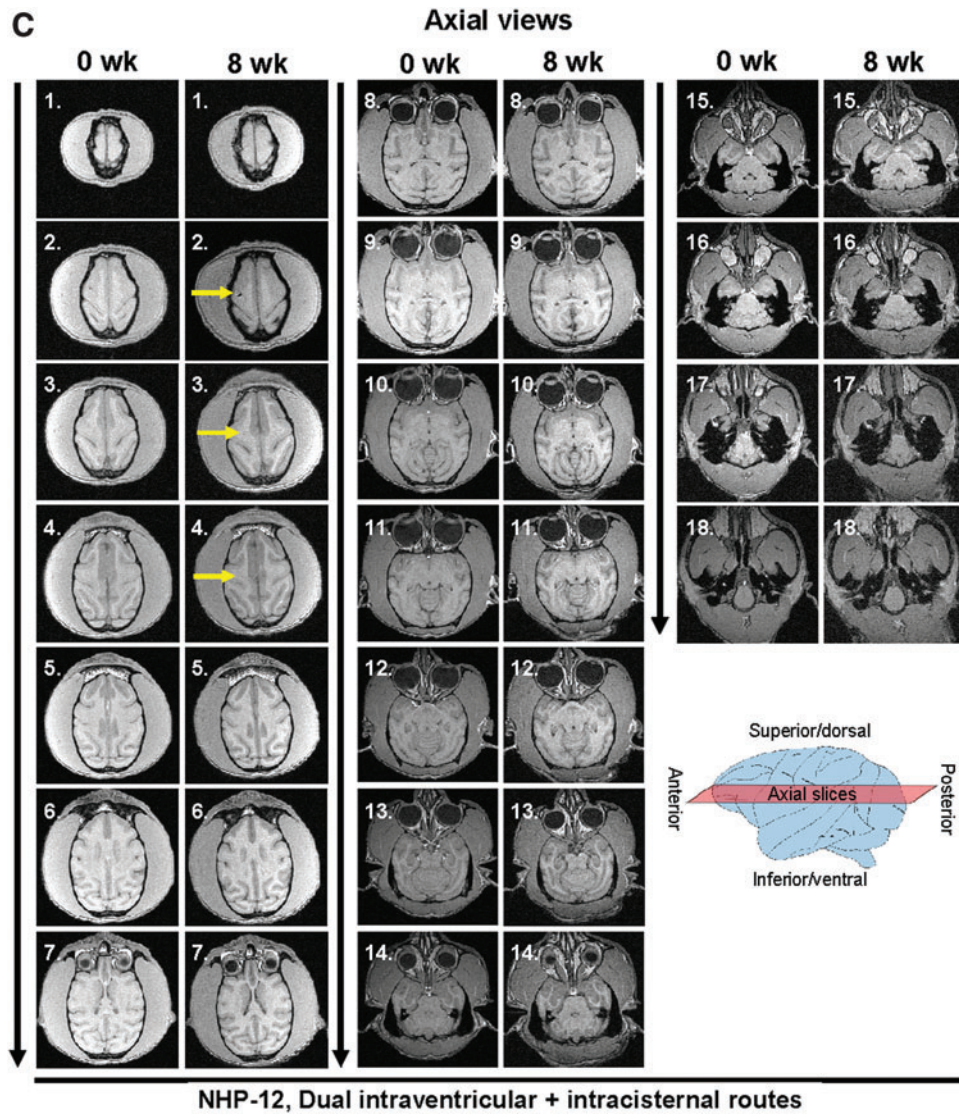


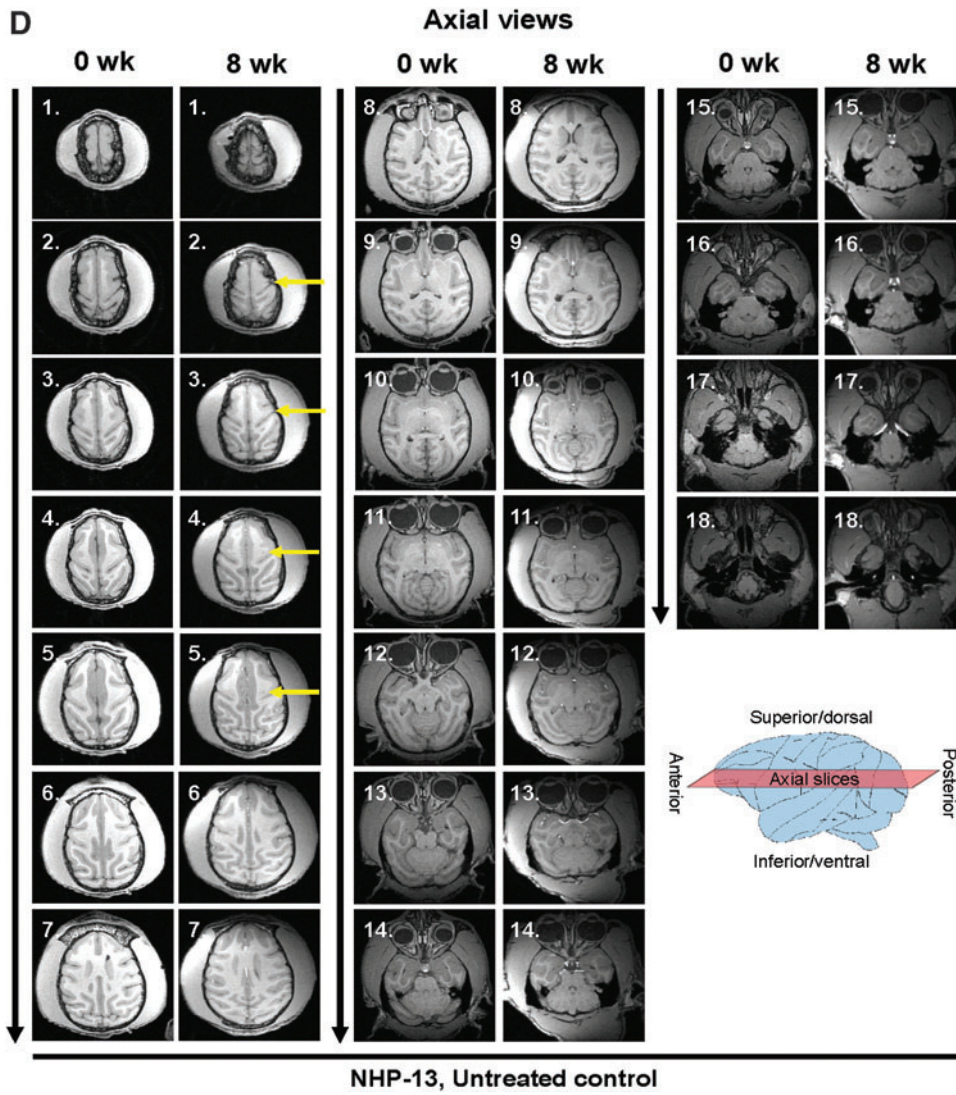
Supplementary Figure S12. MRI safety assessment of NHP brains following CNS administration of AAVrh.10hAPOE2-HA. MRI was performed on the African Green monkeys ($n=3$; NHP-10, -11, and -12) following dual intraventricular plus intracisternal route AAVrh.10hAPOE2-HA administration (1×10^{14} gc total, 5×10^{13} gc/route). A PBS-treated control (NHP-13) from an earlier study was included for comparison.³⁵ These NHPs were assessed for abnormalities by MRI T1 weighted scans before and after surgery (8 weeks or 13 weeks for PBS control, NHP-13) prior to necropsy for health surveillance. Times for assessment were ± 2 days. **(A–D)** Axial (horizontal) views of each NHP head, with images every 0.5 cm depth, superior to inferior aspect (see schematic in the *lower right corner*). **(E–H)** Coronal (transverse) views of each NHP head, with images every 0.5 cm depth, anterior to posterior aspect (see schematic in the *lower right corner*). **(A)** NHP-10. **(B)** NHP-11. **(C)** NHP-12. **(D)** NHP-13 (PBS). **(E)** NHP-10. **(F)** NHP-11. **(G)** NHP-12. **(H)** NHP-13 (PBS). At each depth (#1–18), the *left column* displays the scans before surgery, while the *right column* displays the same plane from 8 weeks post-vector administration. The direction of the images is displayed from superior (#1) to inferior (#18) for each axial MRI series, and anterior (#1) to posterior (#14) for the coronal MRI series, with *long black arrows* left of the 0 week images indicating the flow of the images. *Yellow arrows* indicate locations of the remnants of the catheter used to deliver the vector to the frontal horn of the lateral ventricle for the intraventricular route of the dual intraventricular/intracisternal administration. No pathology was noted around the sites other than thin holes from catheters. The enlarged fluid space (*black color*) in the lower regions of the NHP MRI scans are the result of the monkey's neck and head being rotated obliquely away from the medial plane, and are not the result of pathology. This was confirmed on T2 and T2-FLAIR scans (not shown) during the same imaging session.



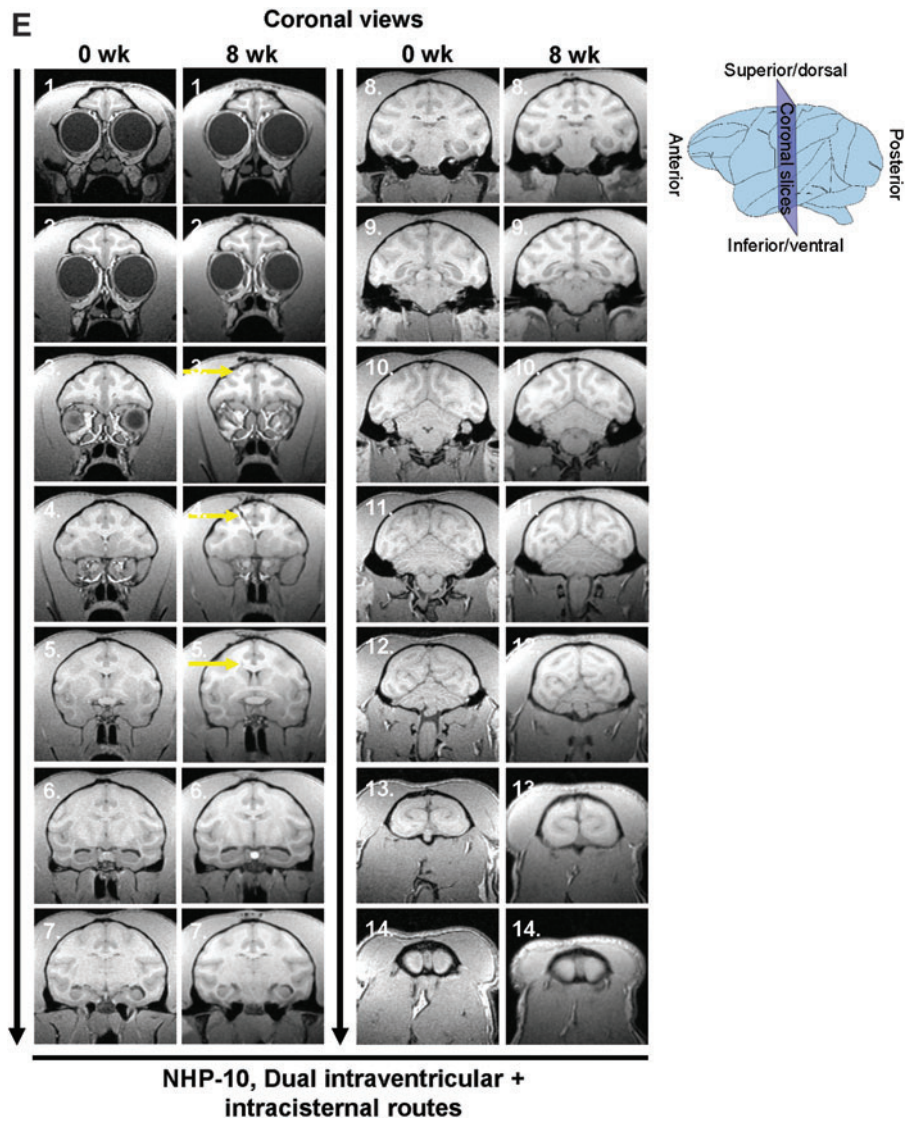
Supplementary Figure S12. (Continued).



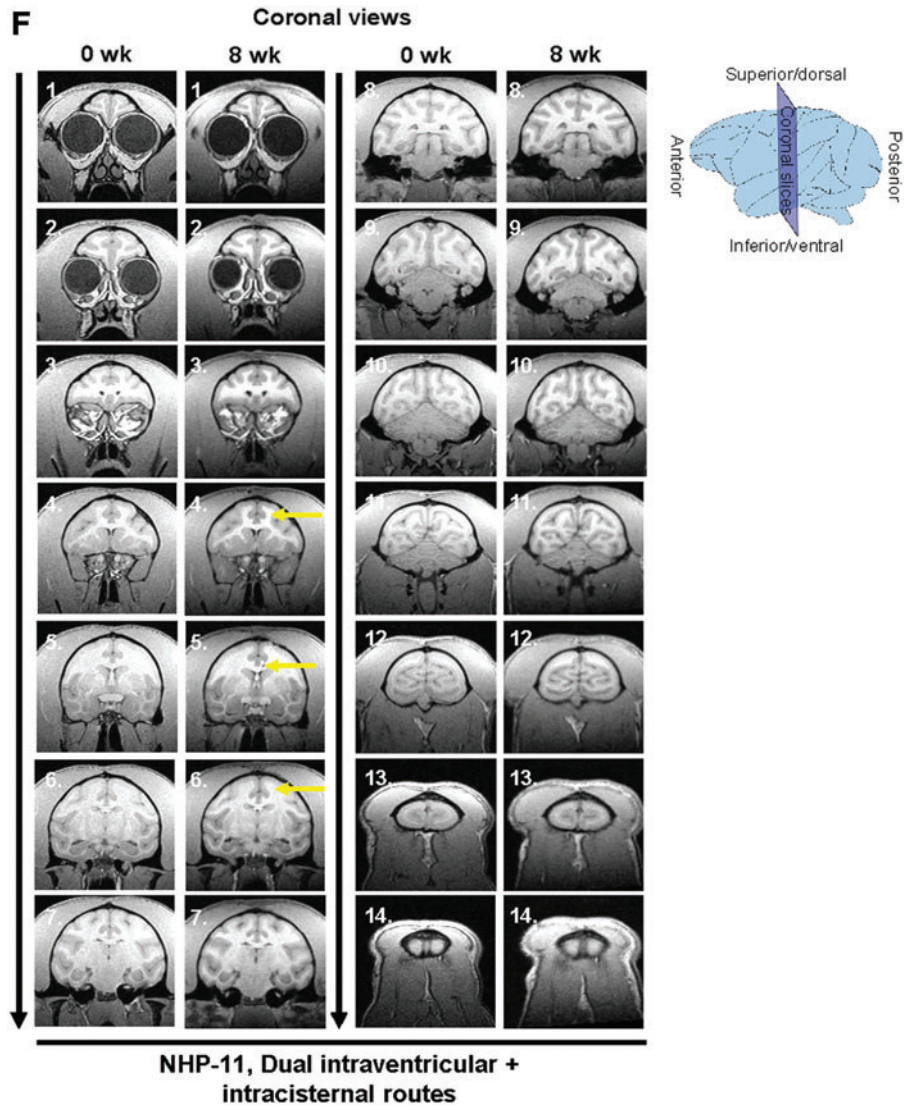
Supplementary Figure S12. (Continued).



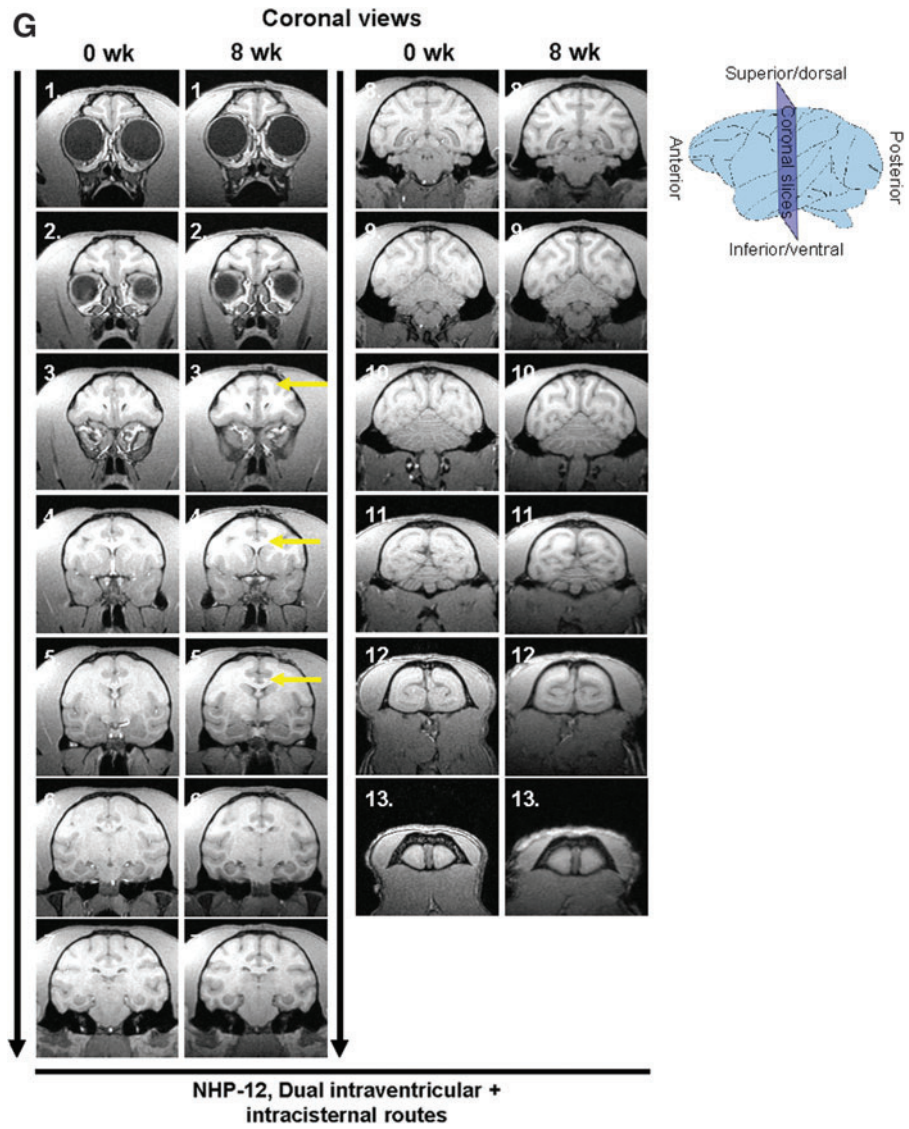
Supplementary Figure S12. (Continued).



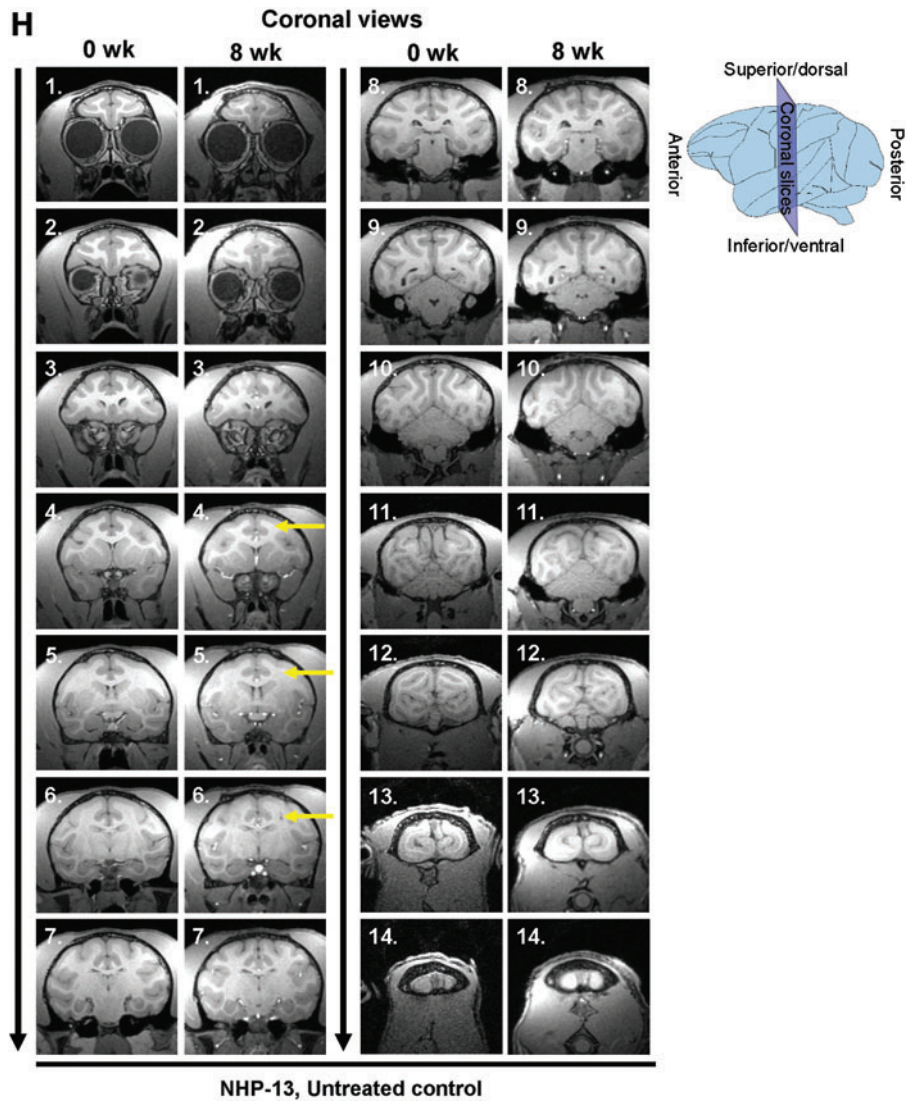
Supplementary Figure S12. (Continued).



Supplementary Figure S12. (Continued).



Supplementary Figure S12. (Continued).



Supplementary Figure S12. (Continued).