

Table S1

IL-6		ERL	95% CI
High IL-6	N	108	
	# of Events	102	
	Median PFS (weeks)	7.3	(4.3, 8.1)
Low IL-6	N	101	
	# of Events	86	
	Median PFS (weeks)	10.3	(8.2, 15.5)
p-value = 0.0092			

IL-6		ERL	95% CI
High IL-6	N	108	
	# of Events	95	
	Median OS (months)	4.8	(3.6, 5.8)
Low IL-6	N	101	
	# of Events	60	
	Median OS (months)	11.5	(8.1, 13.5)
p-value < 0.0001			

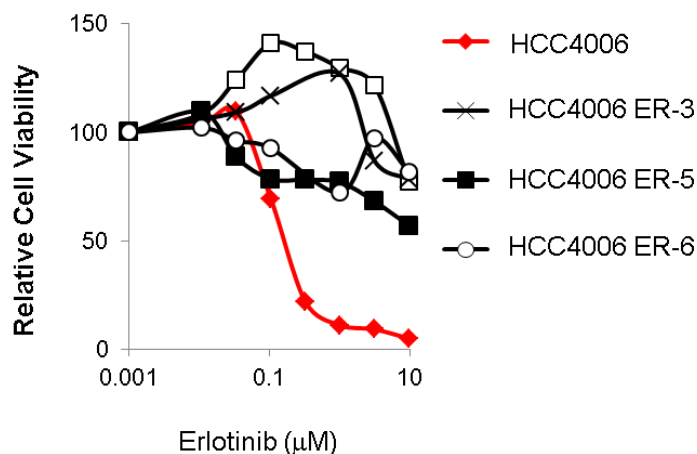
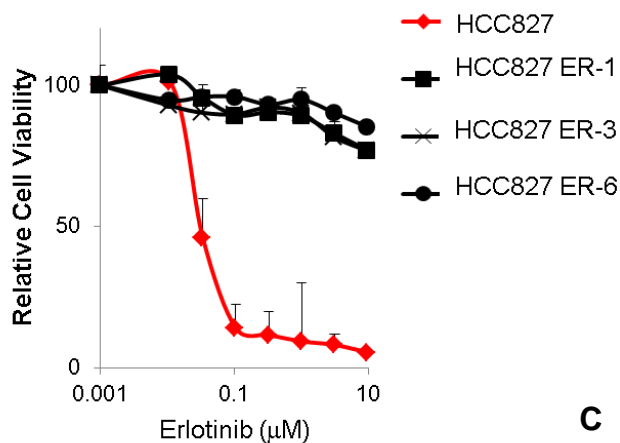
Supplemental Table S2

	High IL-6	Low IL-6
Non-Smoker	8	20
Smoker	100	81
Fisher exact test $p = 0.013$		

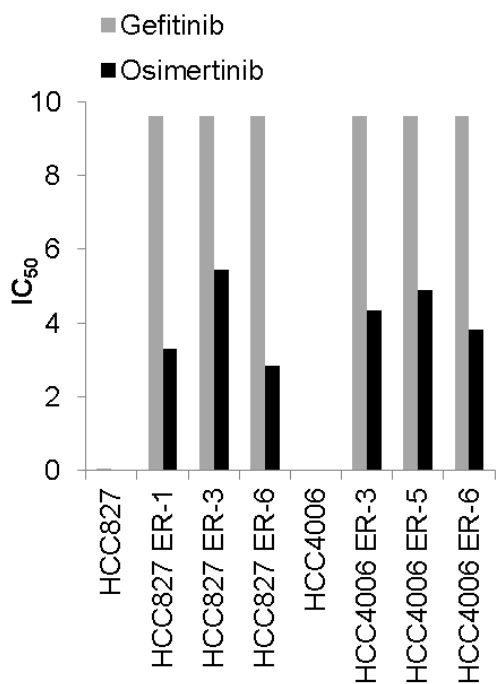
Table S3

Cell Line	Tumor Subtype	Cell Line	Tumor Subtype	Cell Line	Tumor Subtype
A549	Adenocarcinoma	H2052	Mesothelioma	H820	Adenocarcinoma
Calu-1	Epidermoid carcinoma	H2073	Adenocarcinoma	H838	Adenocarcinoma
Calu-3	Adenocarcinoma	H2077	Adenocarcinoma	H920	Adenocarcinoma
Calu-6	Adenocarcinoma	H2085	Adenocarcinoma	H969	Adenocarcinoma
DFCI024	Adenocarcinoma	H2086	Adenocarcinoma	HCC1171	NSCLC
DFCI032	Adenocarcinoma	H2087	Adenocarcinoma	HCC1195	Adenocarcinoma
EKVX	Adenocarcinoma	PC-9	Adenocarcinoma	HCC1313	Squamous
H1155	Large Cell	H2122	Adenocarcinoma	HCC1359	Large Cell
H125	Adenosquamous	H2126	Adenocarcinoma	HCC1438	Large Cell
H1299	Large Cell	H2170	Squamous	HCC15	Squamous
H1355	Adenocarcinoma	H2172	NSCLC	HCC1833	Adenocarcinoma
H1373	Adenocarcinoma	H2228	Adenocarcinoma	HCC1897	Squamous
H1385	Squamous	H2250	Adenocarcinoma	HCC193	Adenocarcinoma
H1395	Adenocarcinoma	H2258	Adenocarcinoma	HCC2108	Adenocarcinoma
H1437	Adenocarcinoma	H226	Squamous Mesothelioma	HCC2279	Adenocarcinoma
H1563	Adenocarcinoma	H2291	Adenocarcinoma	HCC2374	Large Cell Neuroendocrine
H1568	Adenocarcinoma	H23	Adenocarcinoma	HCC2429	NSCLC
H157	Squamous	H2342	Adenocarcinoma	HCC2450	Squamous
H1570	Large Cell	H2347	Adenocarcinoma	HCC2814	Squamous
H1573	Adenocarcinoma	H2405	Adenocarcinoma	HCC2935	Adenocarcinoma
H1648	Adenocarcinoma	H28	Mesothelioma	HCC3051	Large Cell
H1650	Adenocarcinoma	H2882	NSCLC	HCC364	Adenocarcinoma
H1651	Adenocarcinoma	H2887	NSCLC	HCC366	Adenosquamous
H1666	Adenocarcinoma	H290	Mesothelioma	HCC4006	Adenocarcinoma
H1693	Adenocarcinoma	SK.LU.1	Adenocarcinoma	HCC4011	Adenocarcinoma
H1703	Adenosquamous	H3122	NSCLC	HCC4017	Large Cell
H1734	Adenocarcinoma	H322	Adenocarcinoma	HCC4018	Adenocarcinoma
H1755	Adenocarcinoma	H324	Adenocarcinoma	HCC4019	Adenocarcinoma
H1781	Adenocarcinoma	H3255	Adenocarcinoma	HCC44	Adenocarcinoma
H1792	Adenocarcinoma	H358	Adenocarcinoma	HCC461	Adenocarcinoma
H1793	Adenocarcinoma	H441	Adenocarcinoma	HCC515	Adenocarcinoma
H1819	Adenocarcinoma	H460	Large Cell	HCC78	Adenocarcinoma
H1838	Adenocarcinoma	H520	Squamous	HCC827	Adenocarcinoma
H1869	Squamous	H522	Adenocarcinoma	HCC95	Squamous
H1944	Adenocarcinoma	H596	Adenosquamous	HOP.62	Adenocarcinoma
H1975	Adenocarcinoma	H647	Adenosquamous	HOP.92	Large Cell
H1993	Adenocarcinoma	H650	Adenocarcinoma	H292	Muco-epidermoid carcinoma
H2009	Adenocarcinoma	H661	Large Cell	H2106	Large Cell Neuroendocrine
H2023	Adenocarcinoma	H720	Carcinoid, atypical		

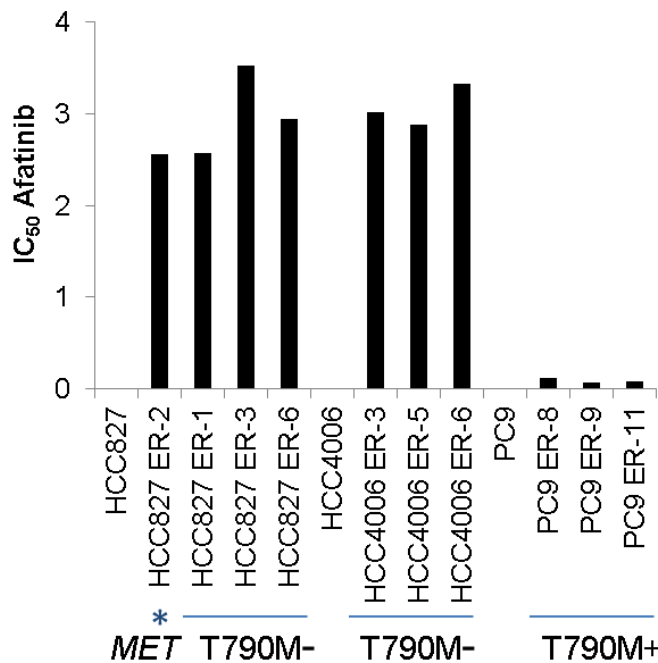
A



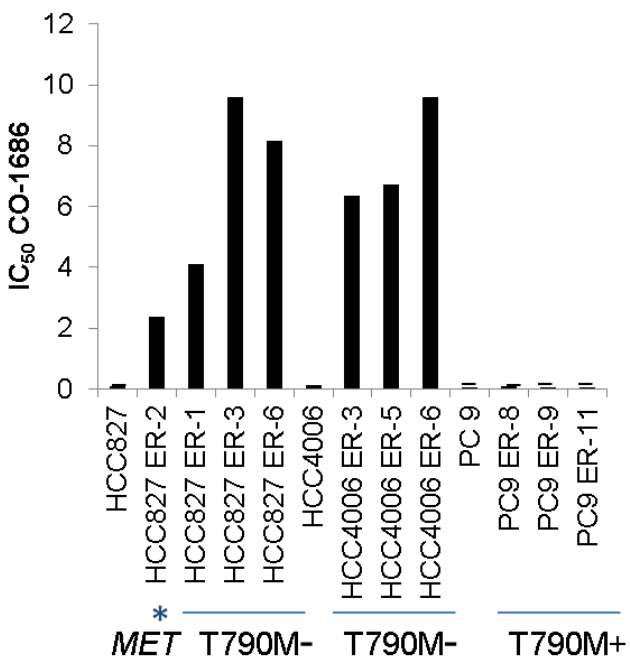
B



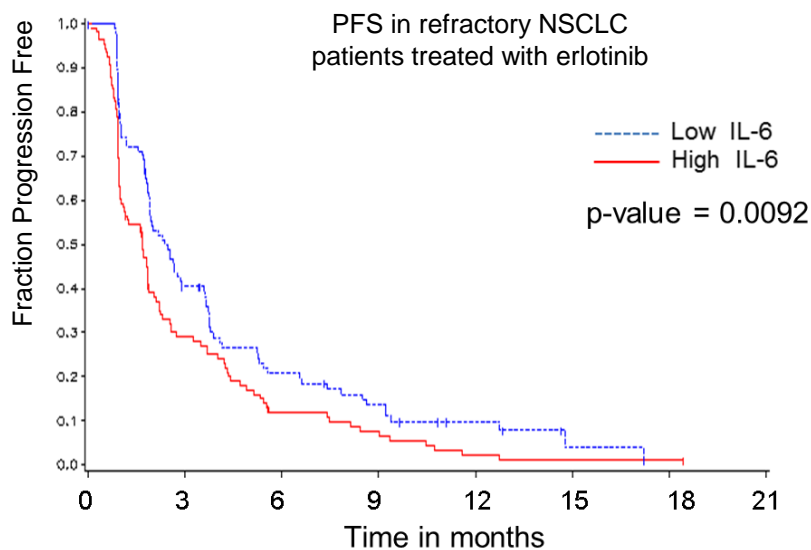
C



D



E



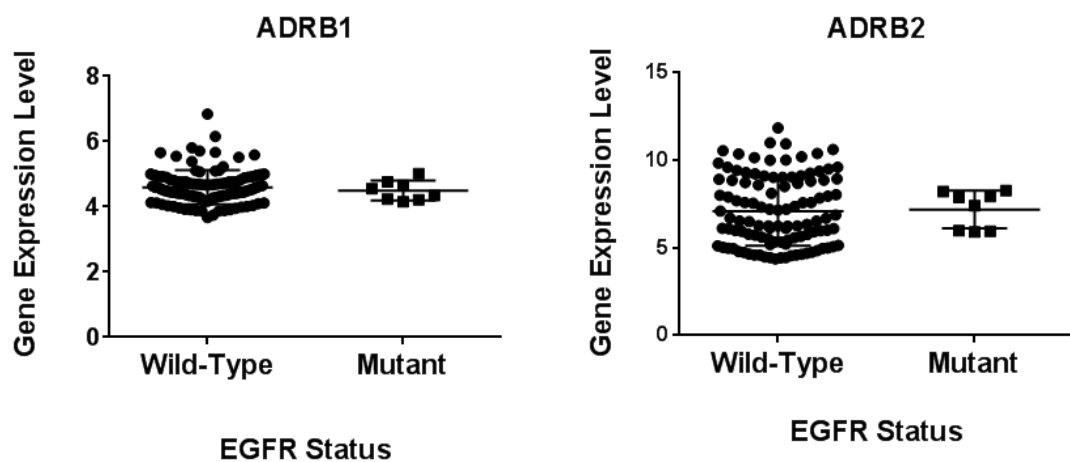
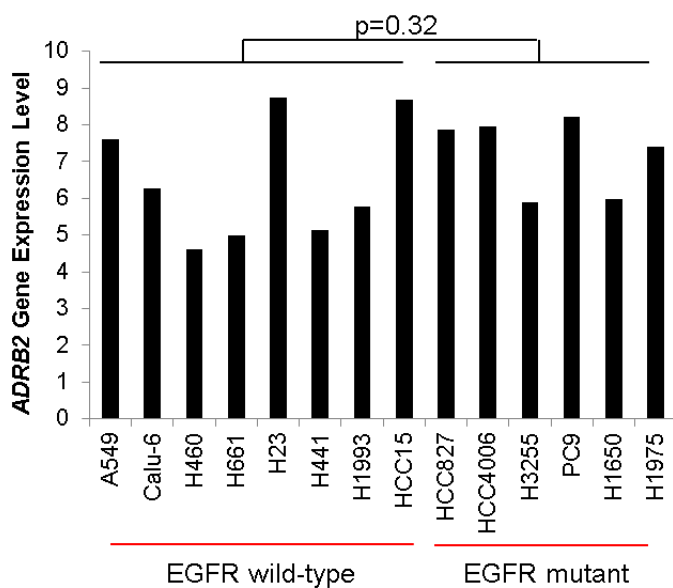
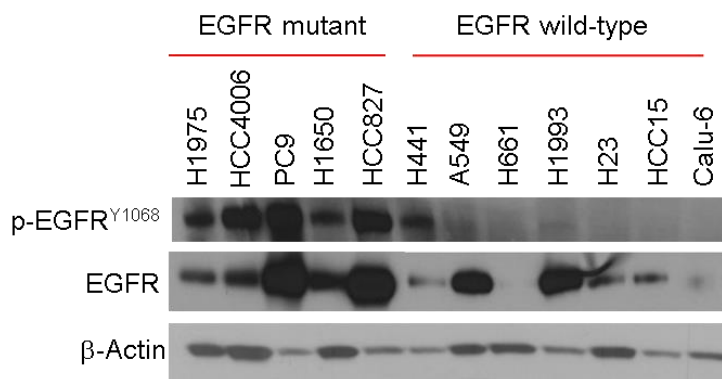
A**B****C**

Figure S2

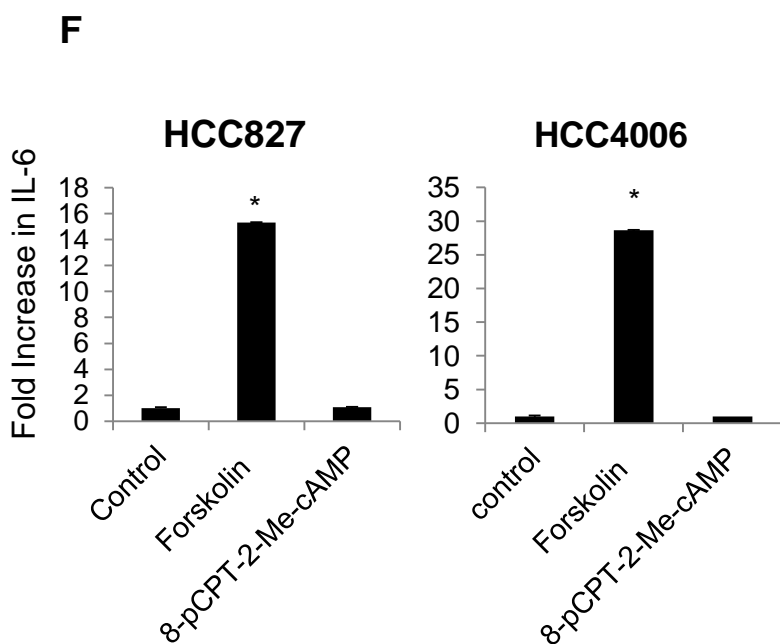
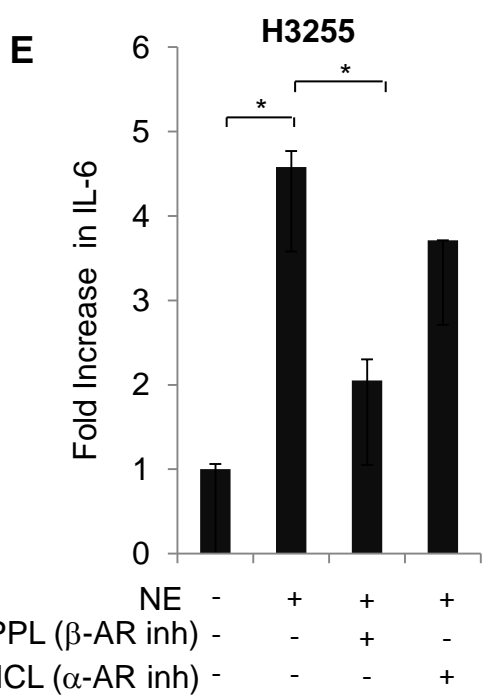
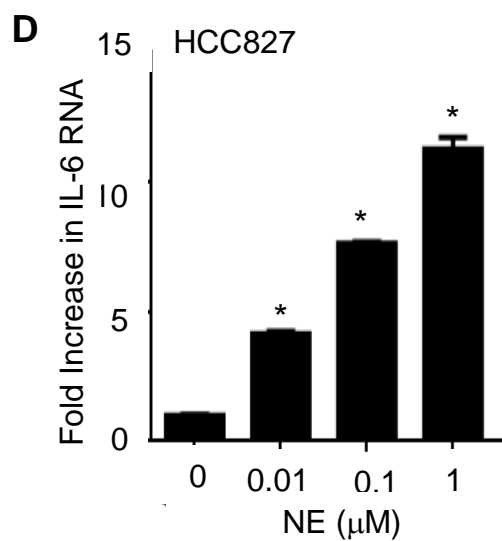
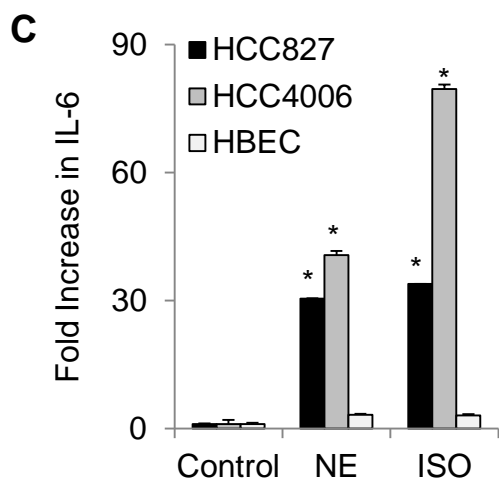
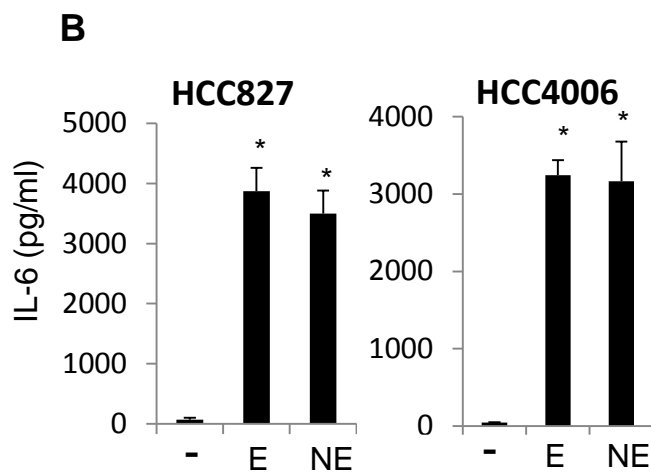
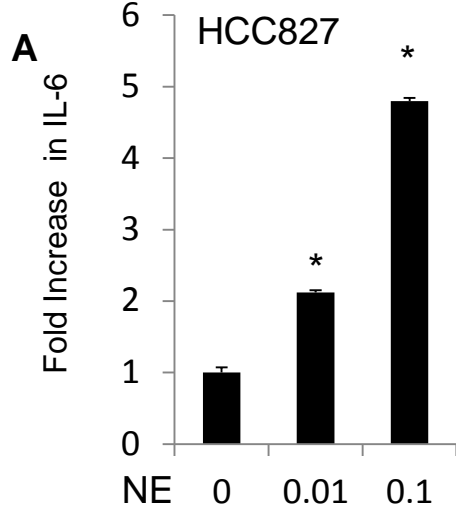


Figure S3

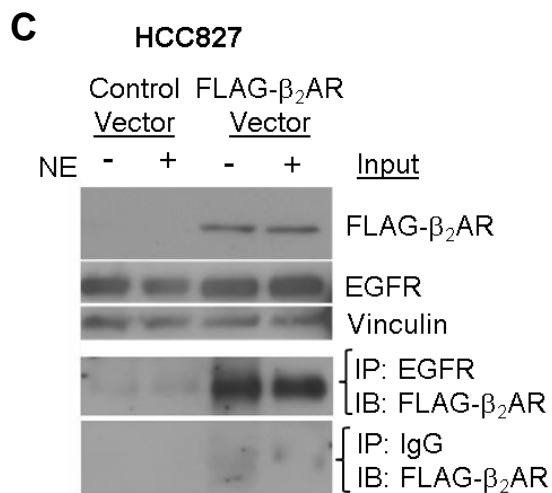
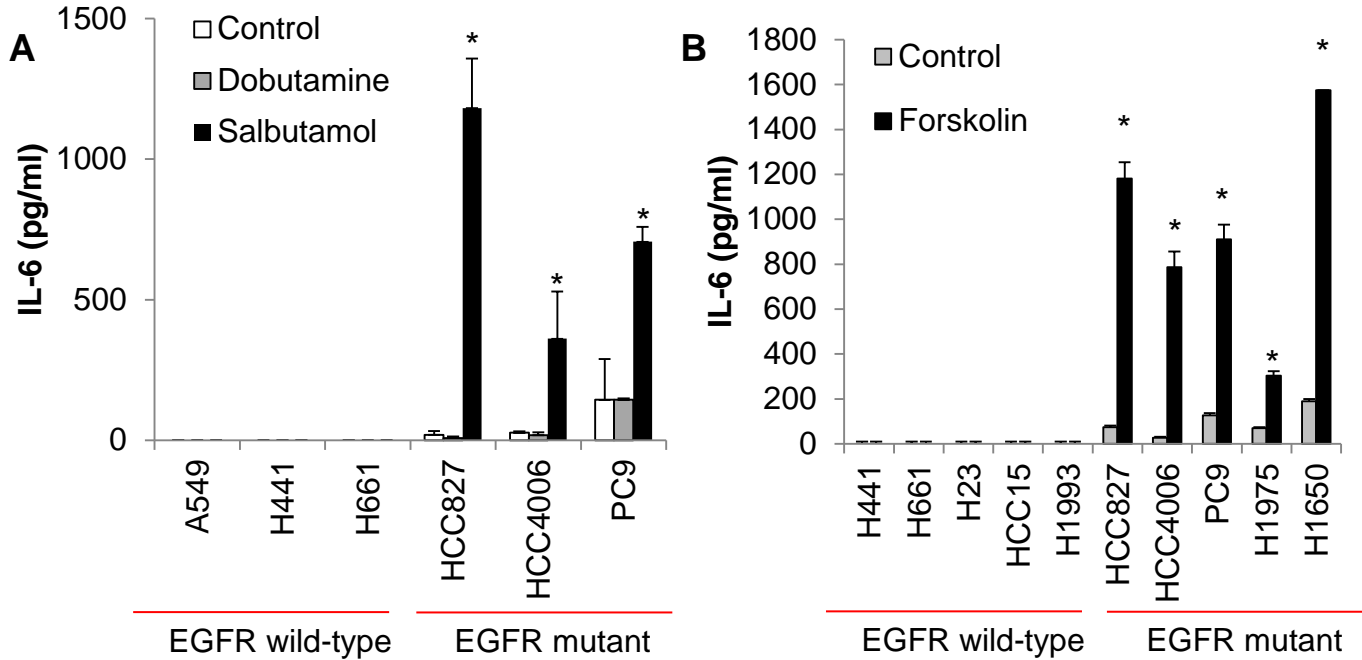


Figure S4

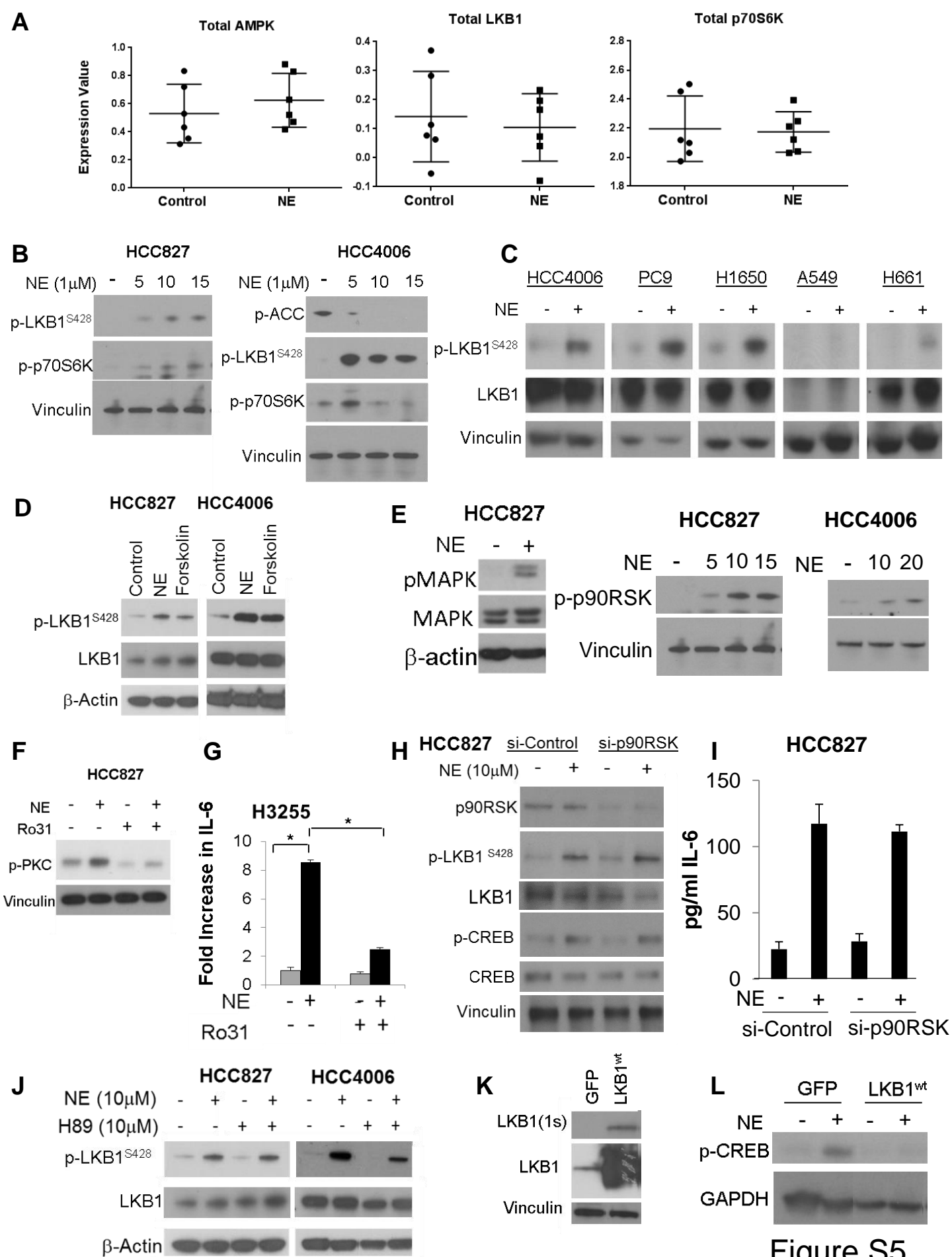


Figure S5

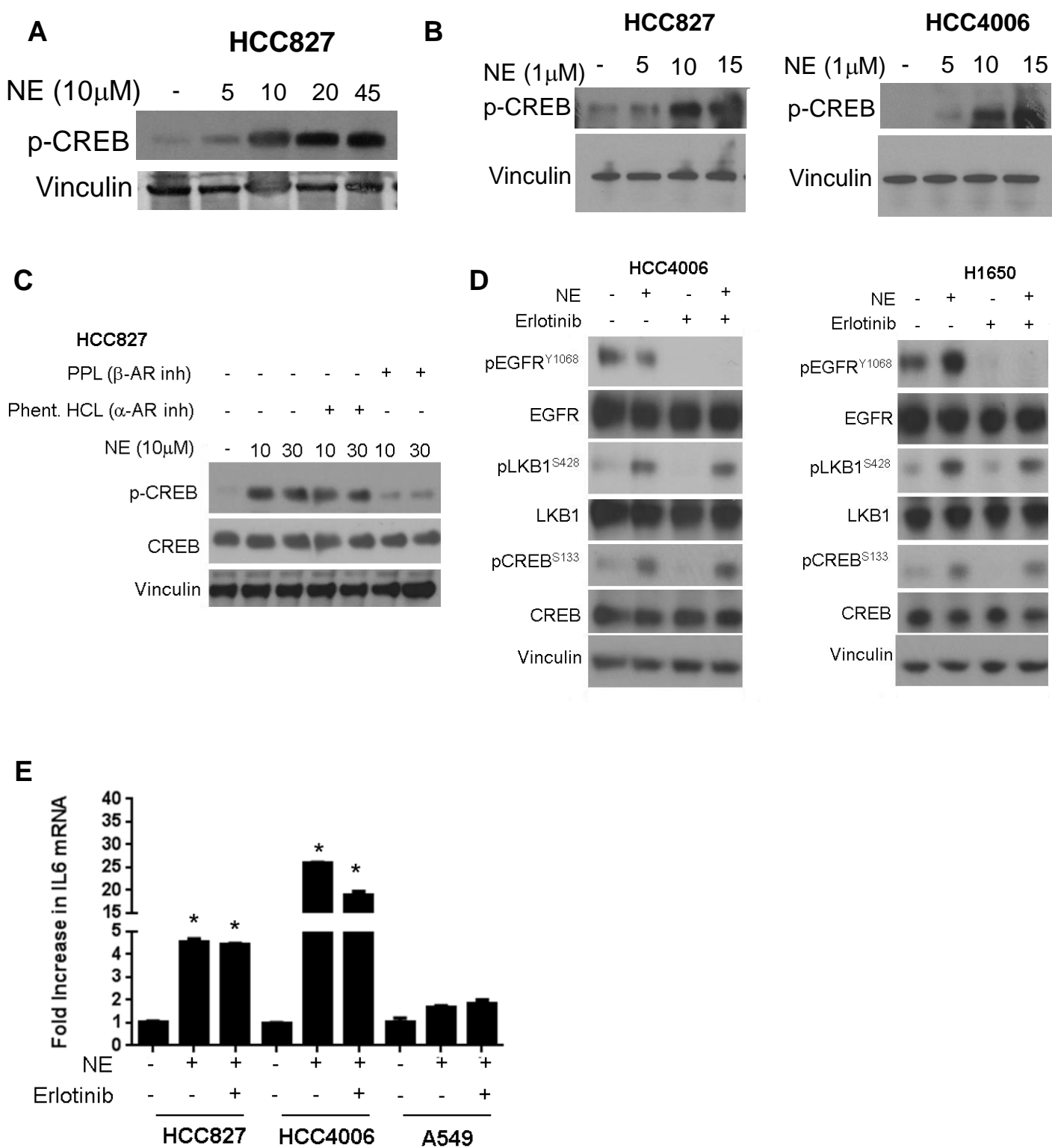


Figure S6

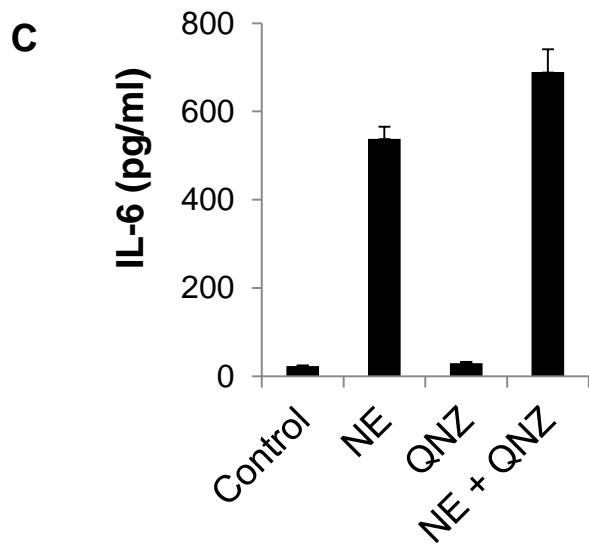
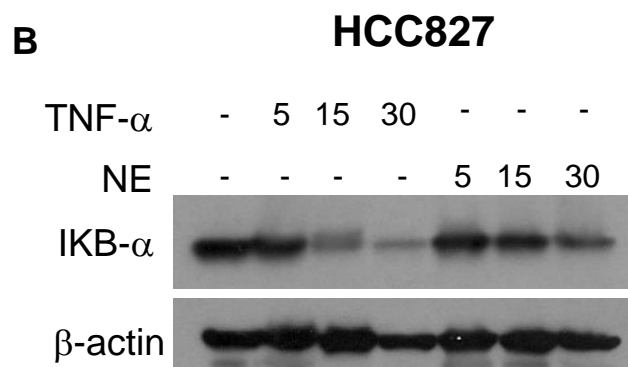
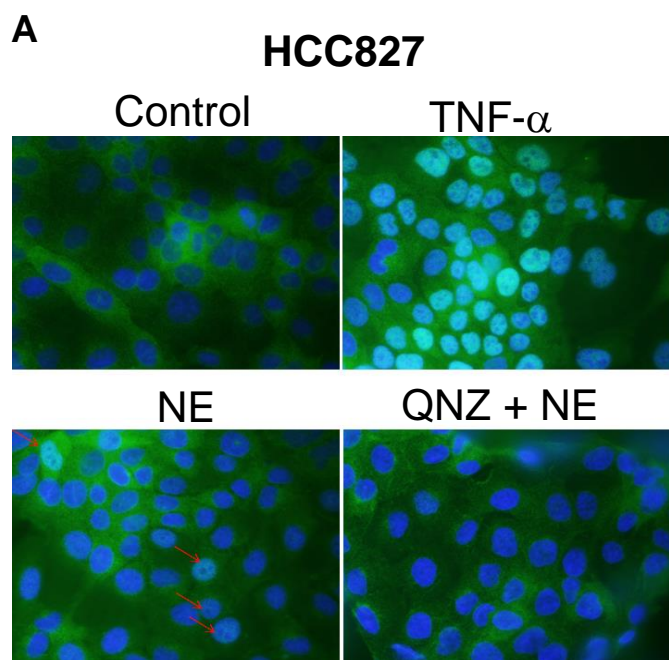


Figure S7

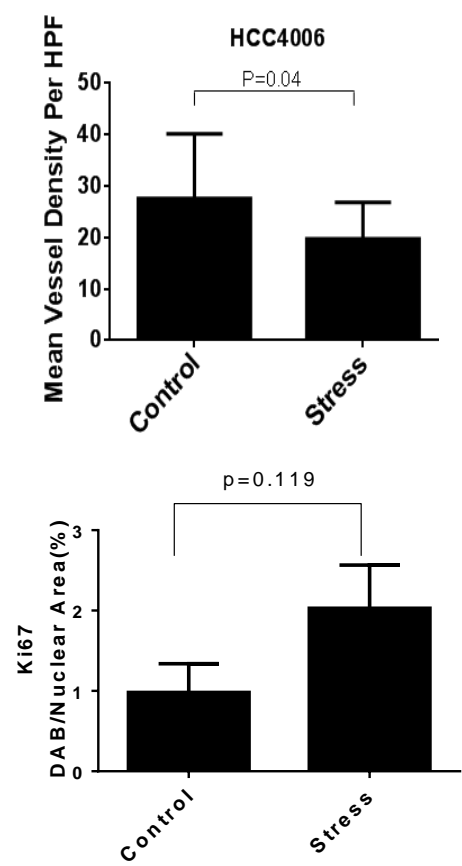
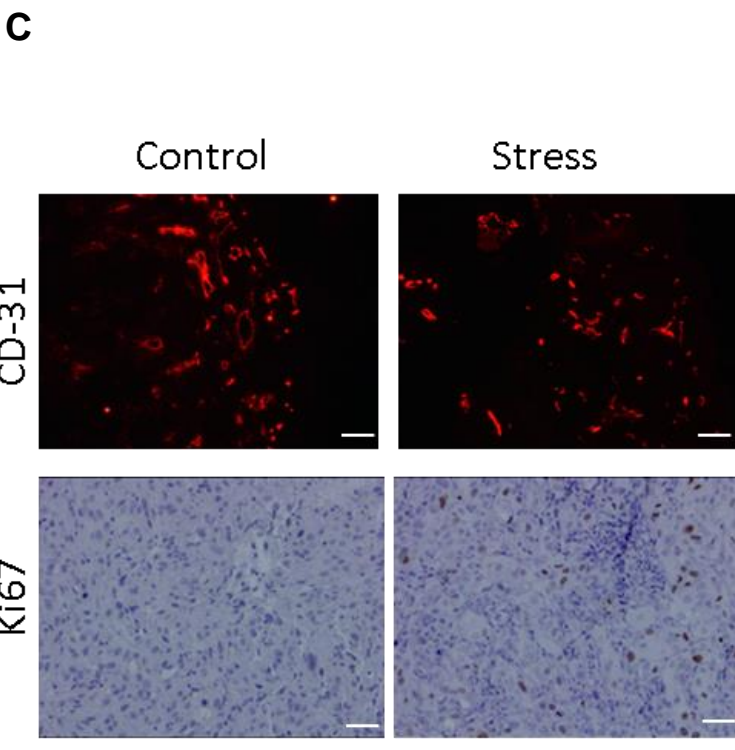
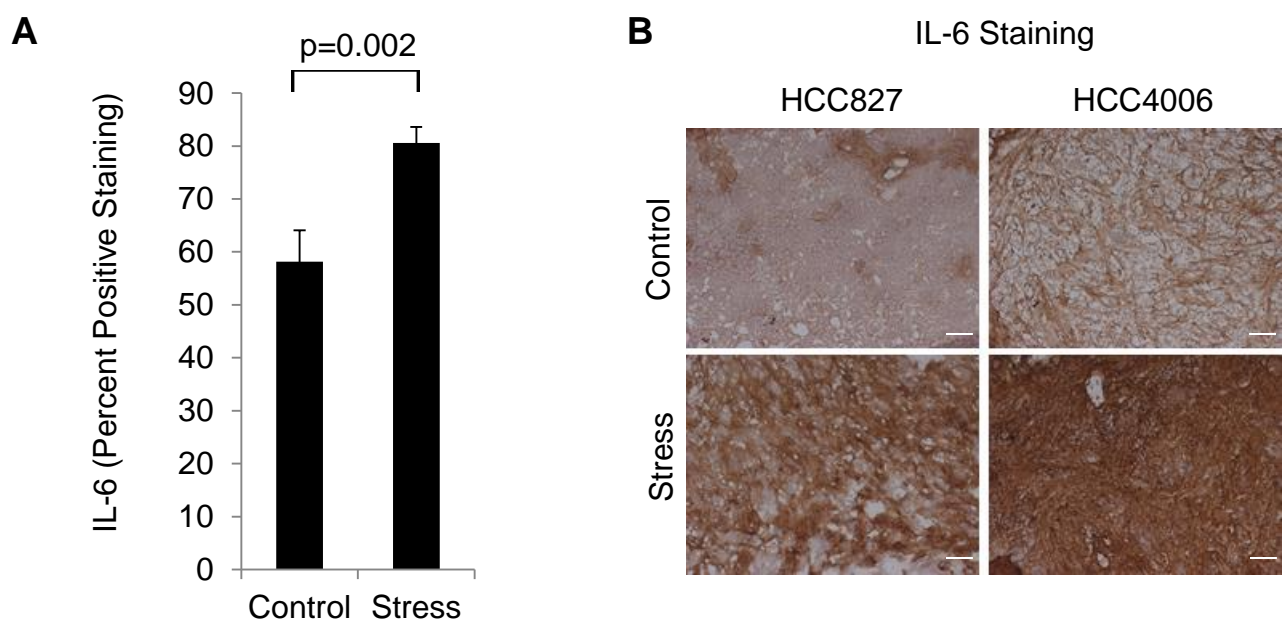


Figure S8