

Supplemental Figure Legend

Supplemental Figure 1. Glucose and palmitic acid induces death of HKC-8 cells.

(A) HKC-8 cells were treated with glucose (0, 10, 20, and 30 mmol/L) for 24h, and then the number of cell death was analyzed. (B) HKC-8 cells were treated with PA (0, 0.2, 0.4, 0.6 and 0.8 mmol/L) for 24h, and then the number of cell death was analyzed. The results indicated that either high glucose or PA induced renal tubular epithelial cell death in a dose-dependent manner. Bars are means \pm S.E. from three independent experiments. $\star\star P < 0.001$

Supplemental Figure 2. HRD1 is downregulated in apoptotic HKC-8 cells.

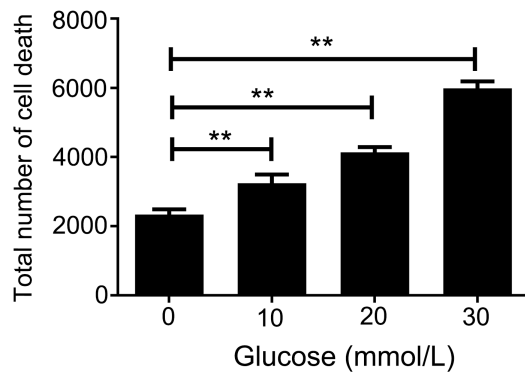
HKC-8 cells were treated with glucose (0, 10, 20, and 30 mmol/L) for 24h. Glucose treatment inhibited HRD1 expression in a dose-dependent manner. The mass weight of HRD1 on western blot was around 67KD.

Supplemental Figure 3. HRD1 promotes eIF2 α ubiquitylation and degradation.

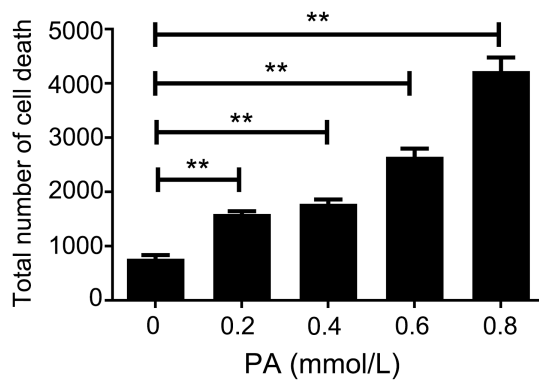
More ubiquitin conjugated to eIF2 α was detected in the cells overexpressing HRD1 compared with no HRD1 transfection, which demonstrated that HRD1, as an E3 ligase, promotes eIF2 α ubiquitylation and degradation by the proteasome. There was a pencil line on the original blot membrane.

Supplemental Figure 1

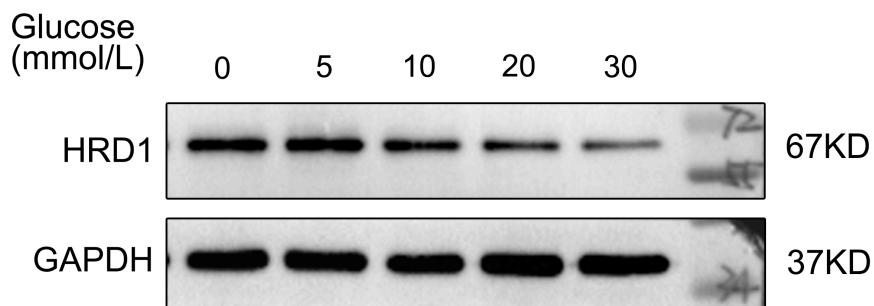
A



B



Supplemental Figure 2



Supplemental Figure 3

HA-Ub	+	+
Myc-eIF2 α	+	+
Ad-HRD1	-	+
Vector	+	-
MG132	+	+

