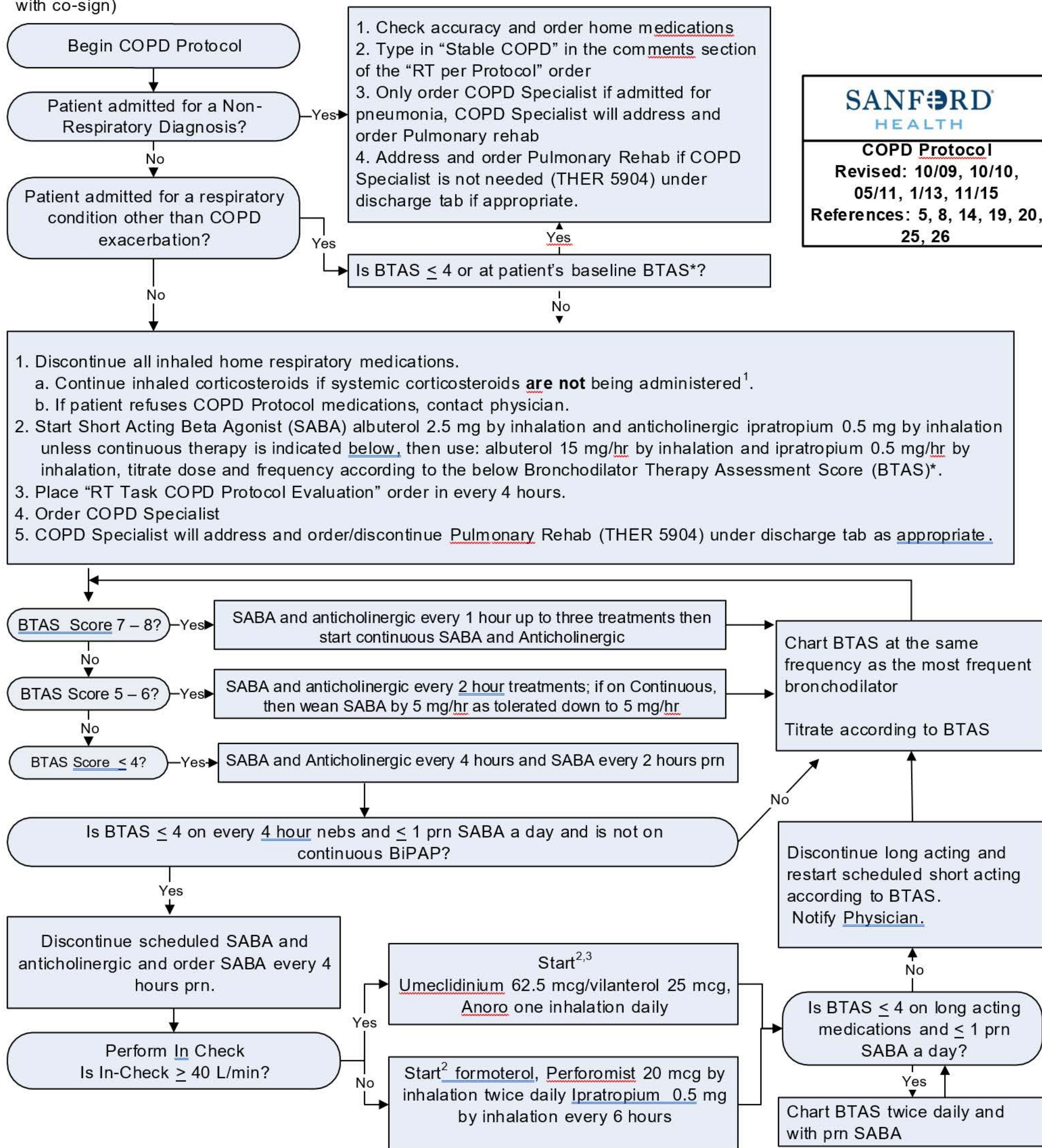


Treatment Protocols

Respiratory Care protocols must be ordered by a licensed practitioner for a specific patient prior to implementing any component of it. When a component is selected and implemented it must be sent to the licensed practitioner for signature (i.e. Per protocol with co-sign)



SANFORD HEALTH
COPD Protocol
 Revised: 10/09, 10/10, 05/11, 1/13, 11/15
 References: 5, 8, 14, 19, 20, 25, 26

* Bronchodilator Therapy Assessment Score					
Breath Sounds	0 Normal / Clear	1 End Expiratory Wheeze	2 Pronounced Expiratory Wheeze	3 Inspiratory & Expiratory Wheeze	4 Absent or Near Absent
Dyspnea	0 None	1 Slight	2 Mild	3 Moderate	4 Severe

1. Refer to the Aerosolized Medication Delivery Policy for specific inhaled medications.
2. If starting twice daily medications prior to 1200, select "include now"
3. If starting once daily medications prior to 2000, select "include now"

Definition of concomitant medications: to determine the incidence of comorbid conditions, we searched the EMR for both International Classification of Disease(s) (ICD)-9 and ICD-10 codes, as our post-intervention time period occurred during the changeover from ICD-9 to ICD-10.

ICD-9 and ICD-10 codes associated with comorbid conditions:

Acute coronary syndrome:

ICD-9 Codes: (with all subcategories or subdivisions)

- 410- Acute myocardial infarction
- 411- Other acute and subacute forms of ischemic heart disease
- 412- Old myocardial infarction
- 413- Angina pectoris
- 414- Other forms of chronic ischemic heart disease

ICD-10 Codes:

- I20- Angina pectoris
- I21- ST elevation (STEMI) and non-ST elevation (NSTEMI) myocardial infarction
- I22- Subsequent ST elevation (STEMI) and non-ST elevation (NSTEMI) myocardial infarction
- I25- Chronic ischemic heart disease

Asthma:

ICD-9 Codes: (with all subcategories or subdivisions)

- 493- Asthma
- ICD-10 Codes:
- J45- Asthma

Diabetes:

ICD-9 Codes: (with all subcategories or subdivisions)

- 249- Secondary diabetes mellitus
 - 250- Diabetes mellitus
- ICD-10 Codes:
- E8- Diabetes mellitus due to underlying condition
 - E9- Drug or chemical induced diabetes mellitus
 - E10- Type 1 diabetes mellitus
 - E11- Type 2 diabetes mellitus
 - E13- Other specified diabetes mellitus