

## **Supplementary Information 2**

### **A simple approach to measure transmissibility and forecast incidence**

Pierre Nouvellet<sup>1,2</sup>, Anne Cori<sup>1</sup>, Tini Garske<sup>1</sup>, Isobel M Blake<sup>1</sup>, Ilaria Dorigatti<sup>1</sup>, Wes Hinsley<sup>1</sup>, Thibaut Jombart<sup>1,2</sup>, Harriet L Mills<sup>1</sup>, Gemma Nedjati-Gilani<sup>1</sup>, Maria D Van Kerkhove<sup>1,3</sup>, Christophe Fraser<sup>1,2</sup>, Christl A Donnelly<sup>1,2</sup>, Neil M Ferguson<sup>1,2</sup>, Steven Riley<sup>1,2</sup>

1: MRC Centre for Outbreak Analysis and Modelling, Imperial College London, Faculty of Medicine, London, UK.

2: National Institute for Health Research Health Protection Research Unit in Modelling Methodology, Imperial College London, Faculty of Medicine, London, UK.

3: Center for Global Health, Institute Pasteur, Paris, France

Below we present figures analogous to Figure 2 in the main text, but relying on either the optimal time-windows or the naïve rational choice of time-windows.

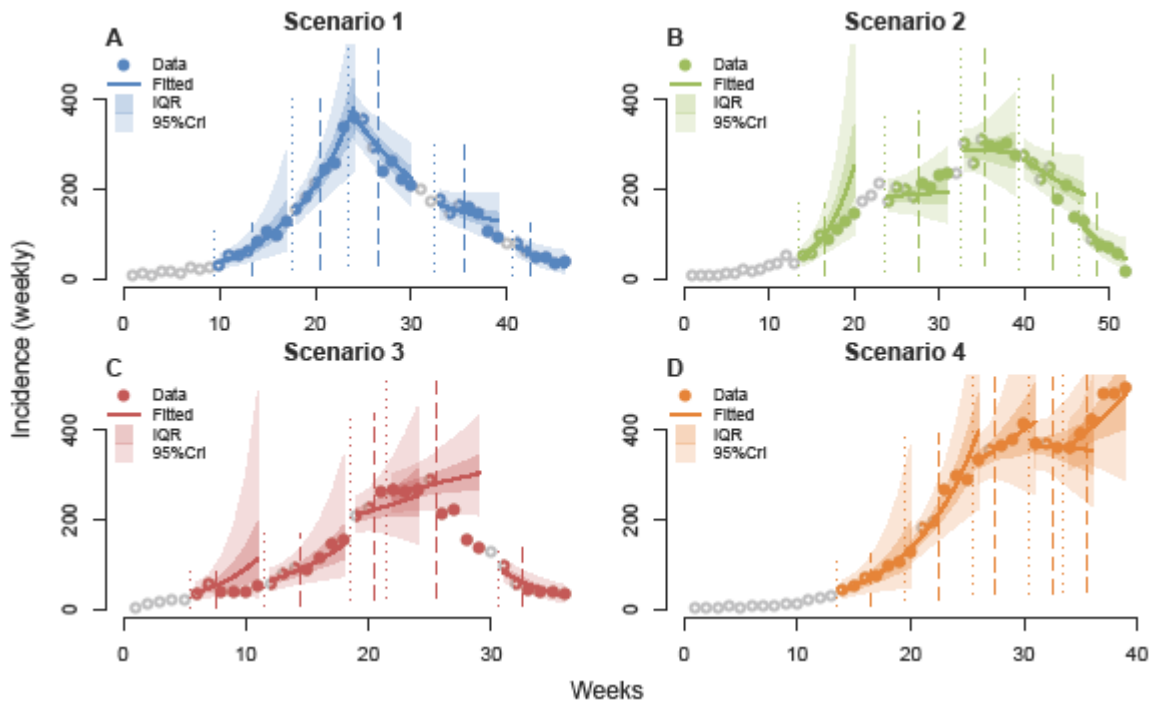


Figure SI.2.1: As in Figure 2, but for the optimal time-windows.

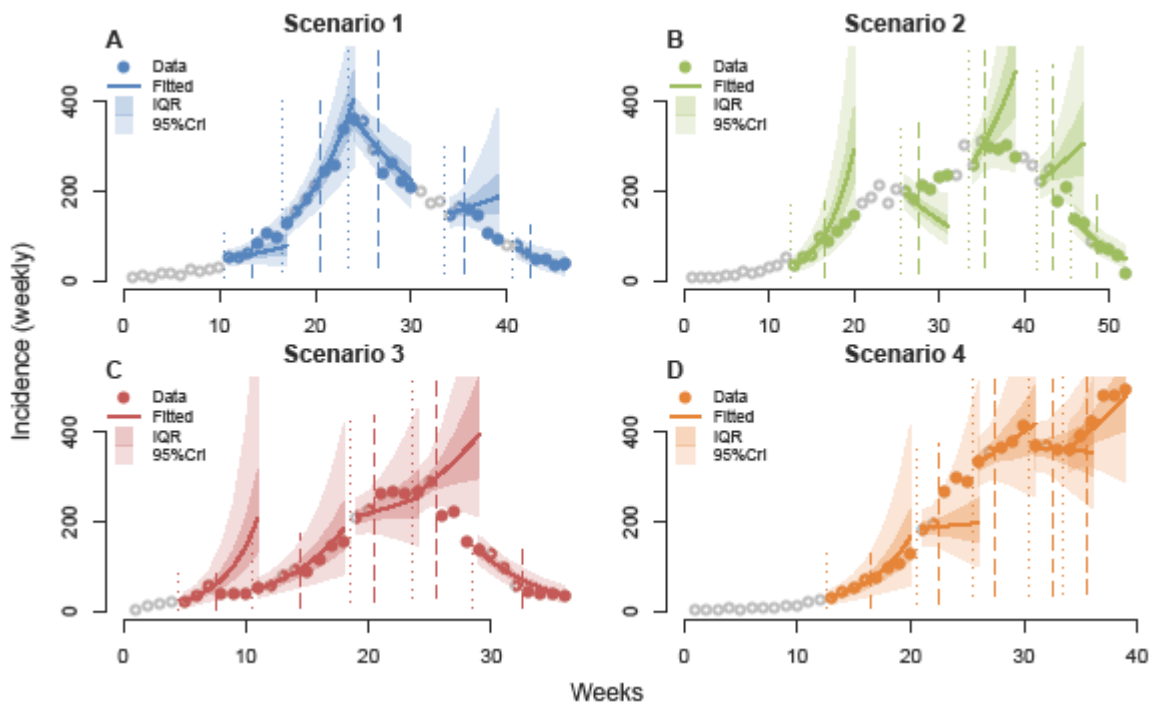


Figure SI.2.2: As in Figure 2, but for the naïve rational choice of time-windows.