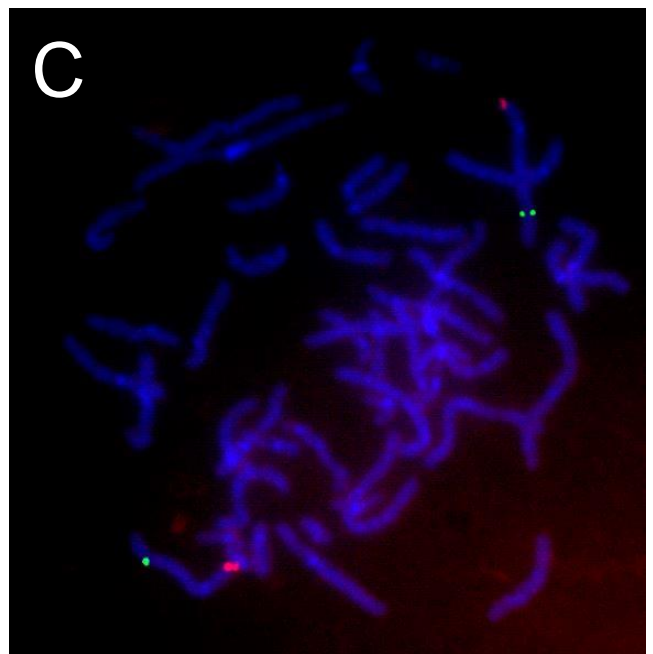
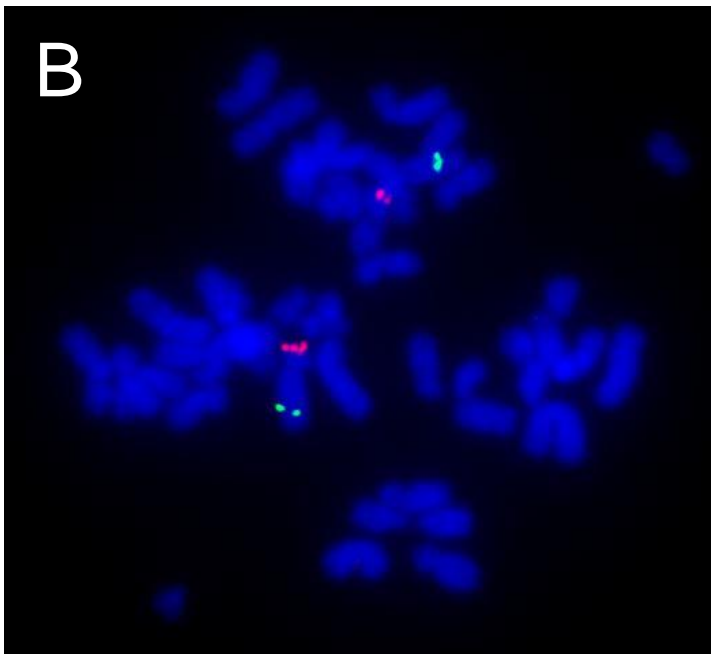
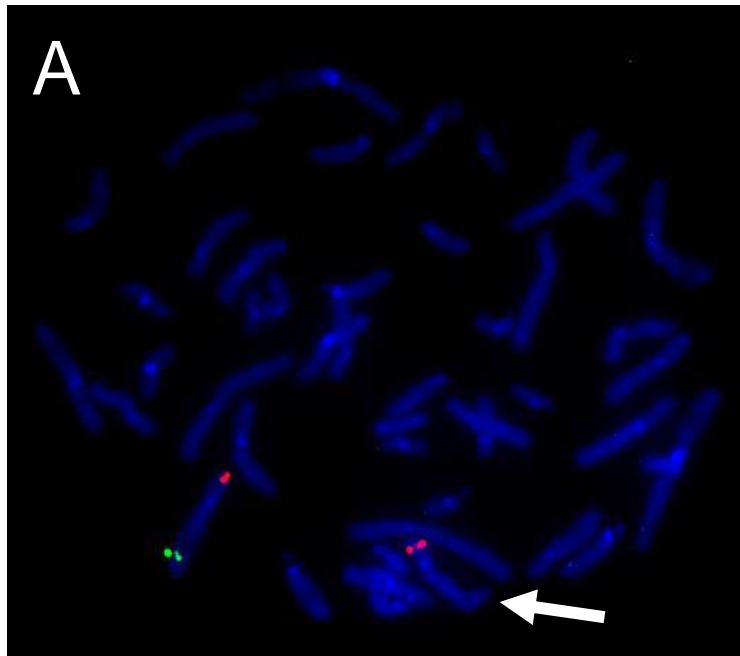


Supplemental Fig. S2.

The result of FISH analyses



The red signals labelled for RP11-78J2 (5p15.32:5,760,940-5,917,401) are used as markers. The green signals labelled for RP11-678N8 (5q31.2:138,944,793-139,148,607) are used as the targets. The proband (A) shows the deletion in one of the chromosome 5. Two green signals are shown in the father (B) and the mother (C).