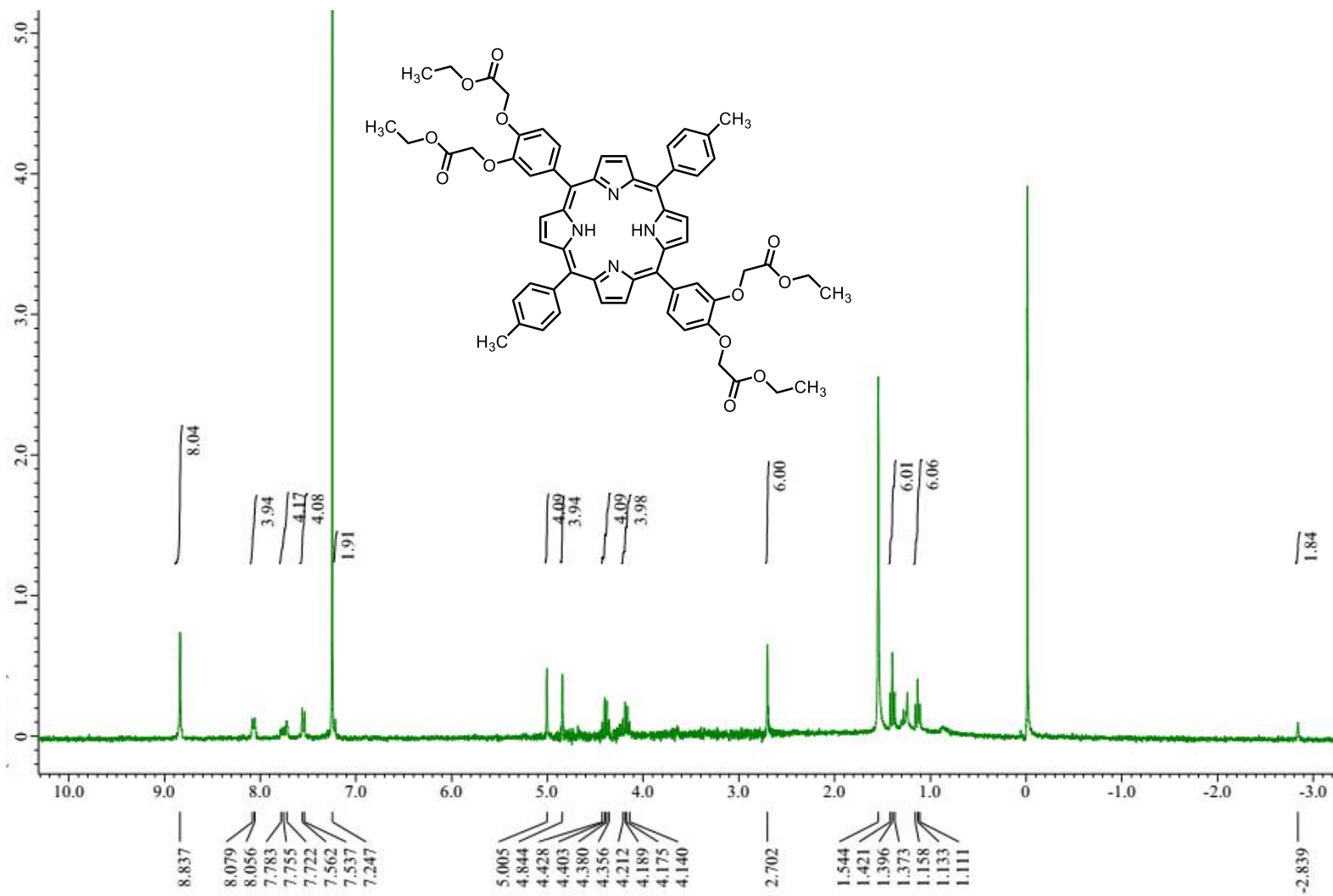
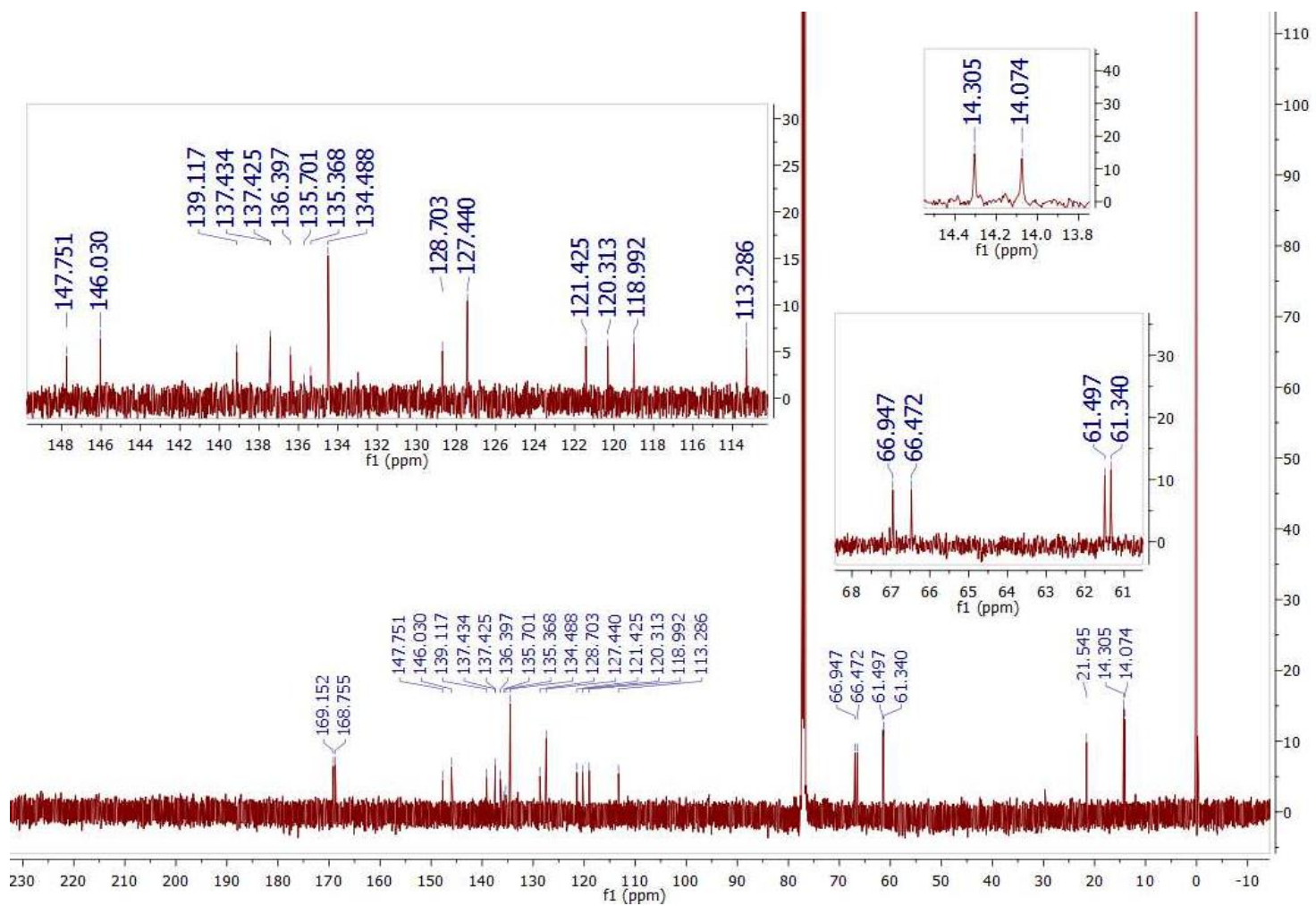


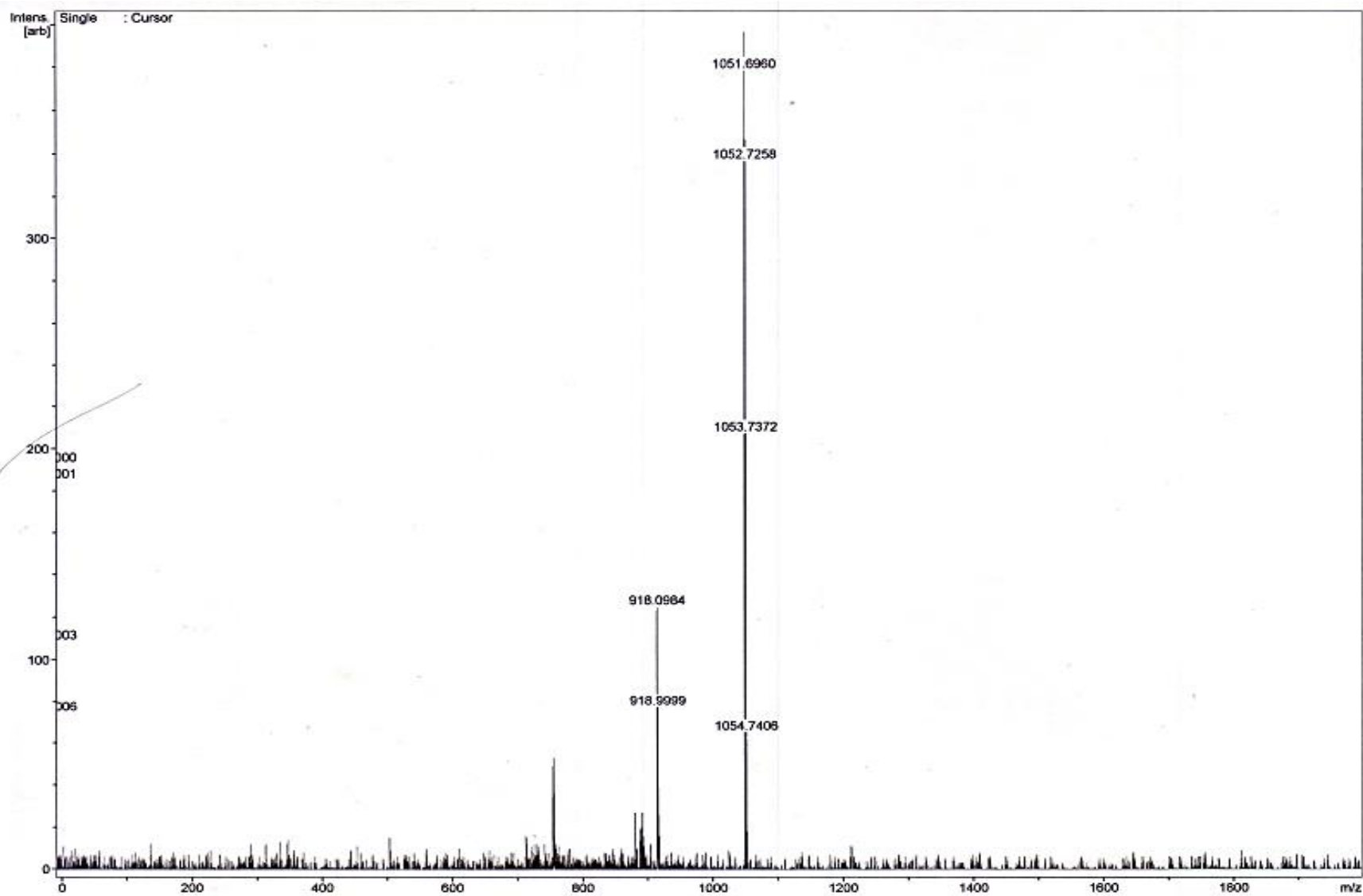
S1. UV/Vis spectra of DBECPDTP in CH<sub>2</sub>Cl<sub>2</sub>.



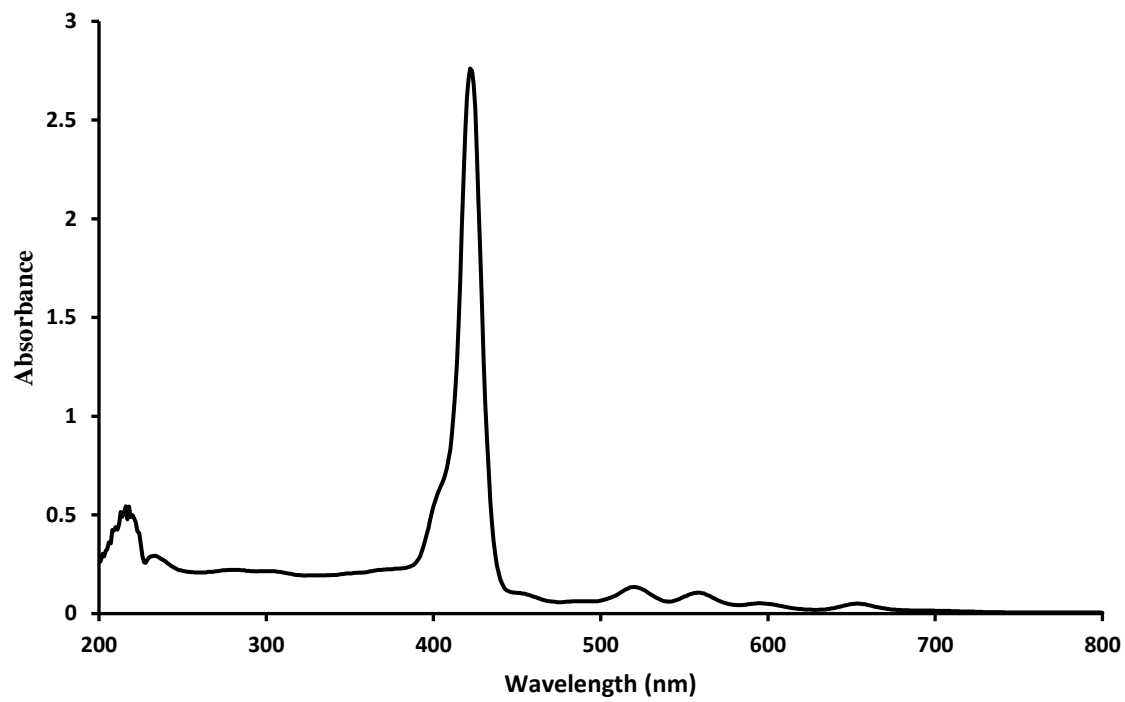
S2. <sup>1</sup>H-NMR (CDCl<sub>3</sub>, 300 MHz) of DBECPDTP.



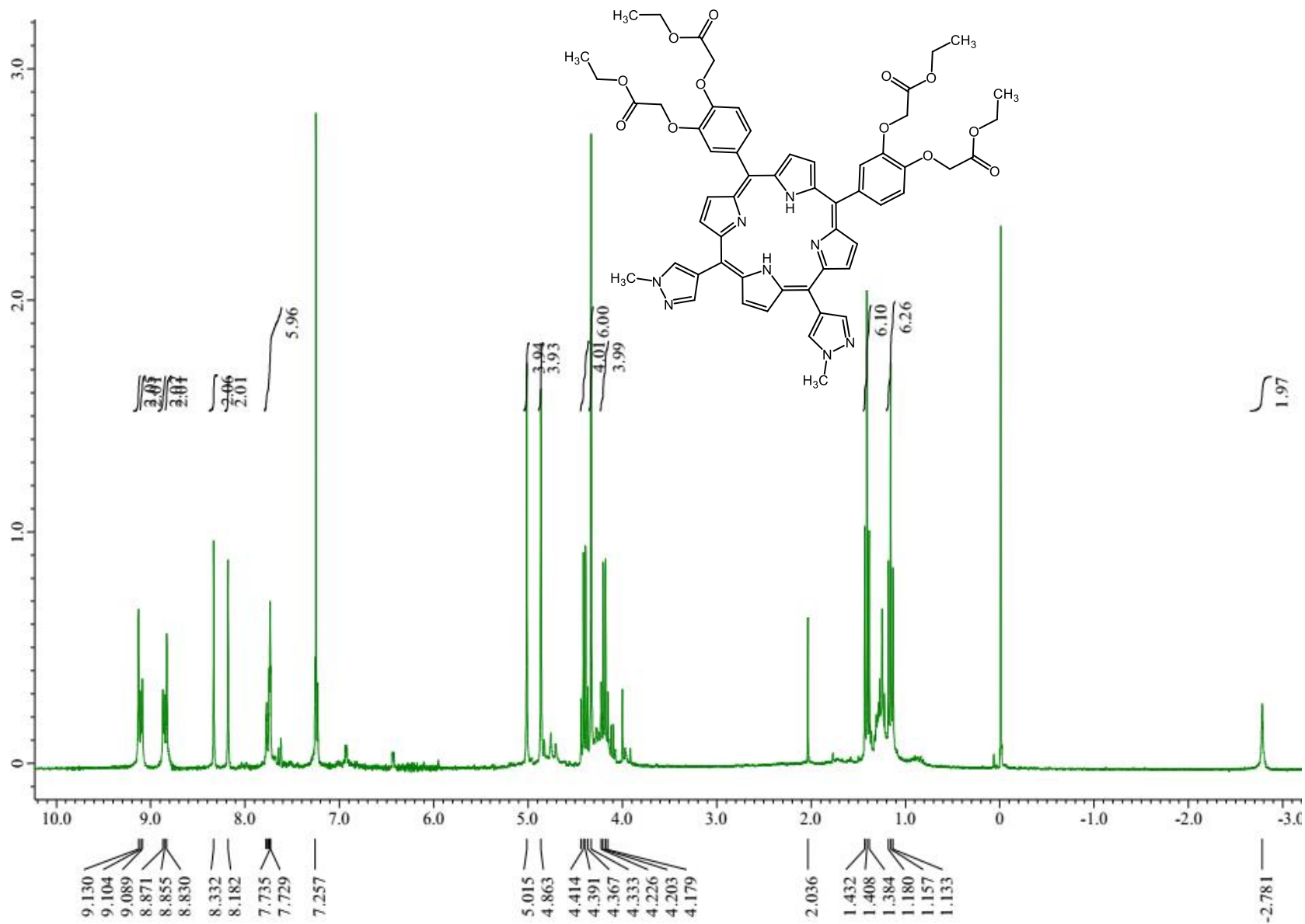
S3.  $^{13}\text{C}$ -NMR ( $\text{CDCl}_3$ , 125 MHz) of DBECPDTP.



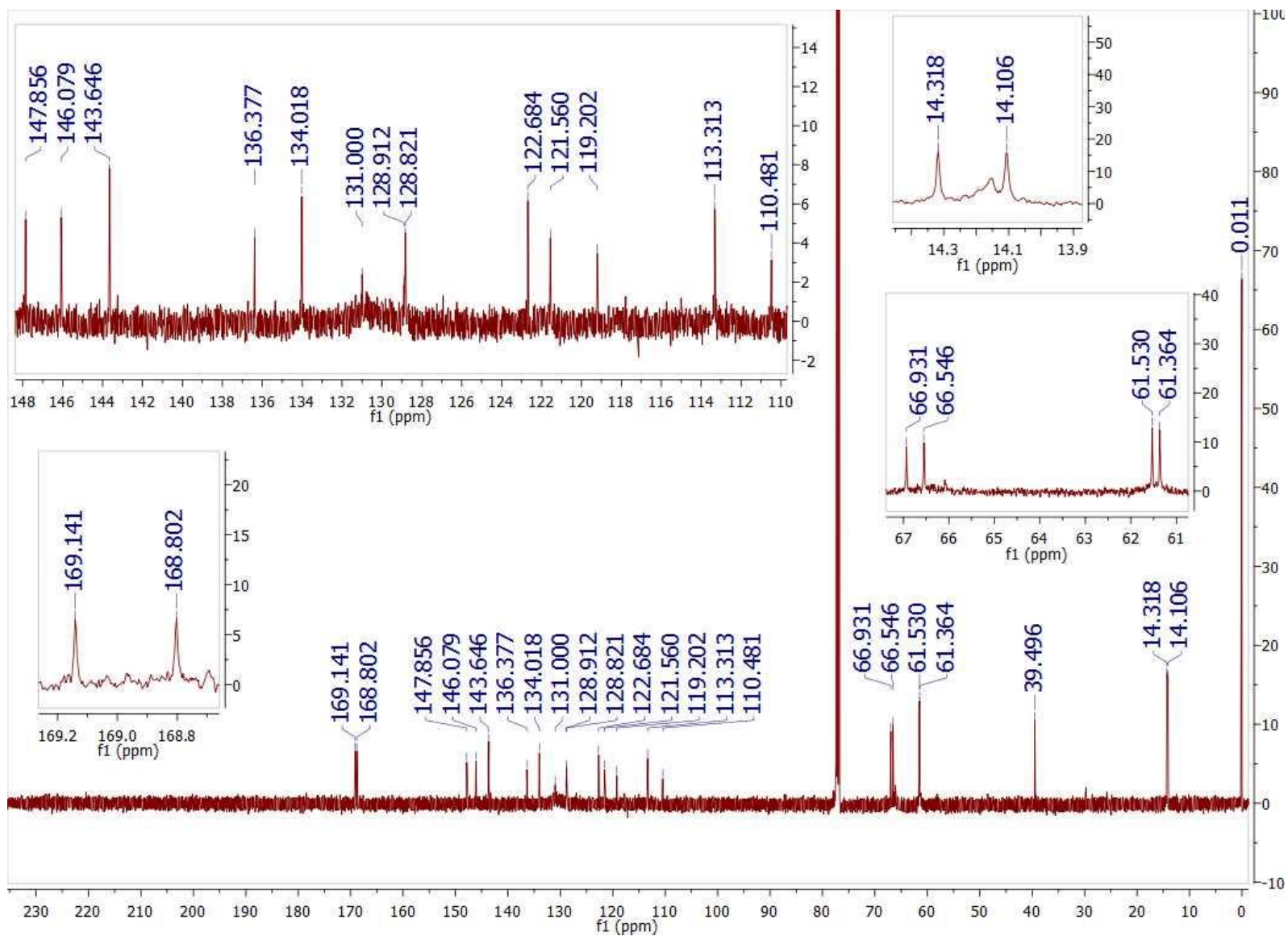
S4. MALDI-TOF LRMS of DBECPDTP.



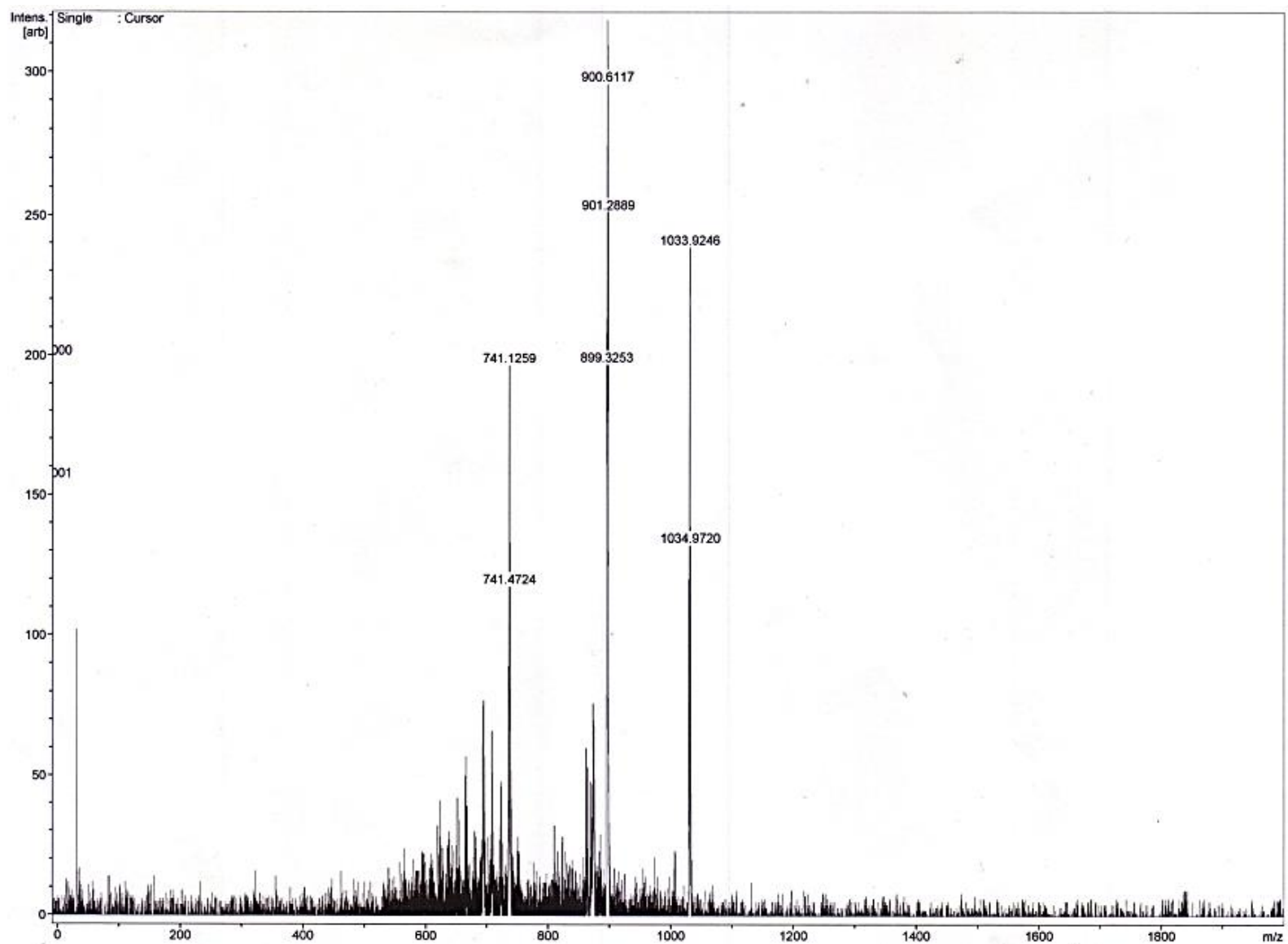
S5. UV/Vis spectra of cDBECPDPzP in CH<sub>2</sub>Cl<sub>2</sub>.



S6. <sup>1</sup>H-NMR (CDCl<sub>3</sub>, 300 MHz) of cDBECPDPzP.

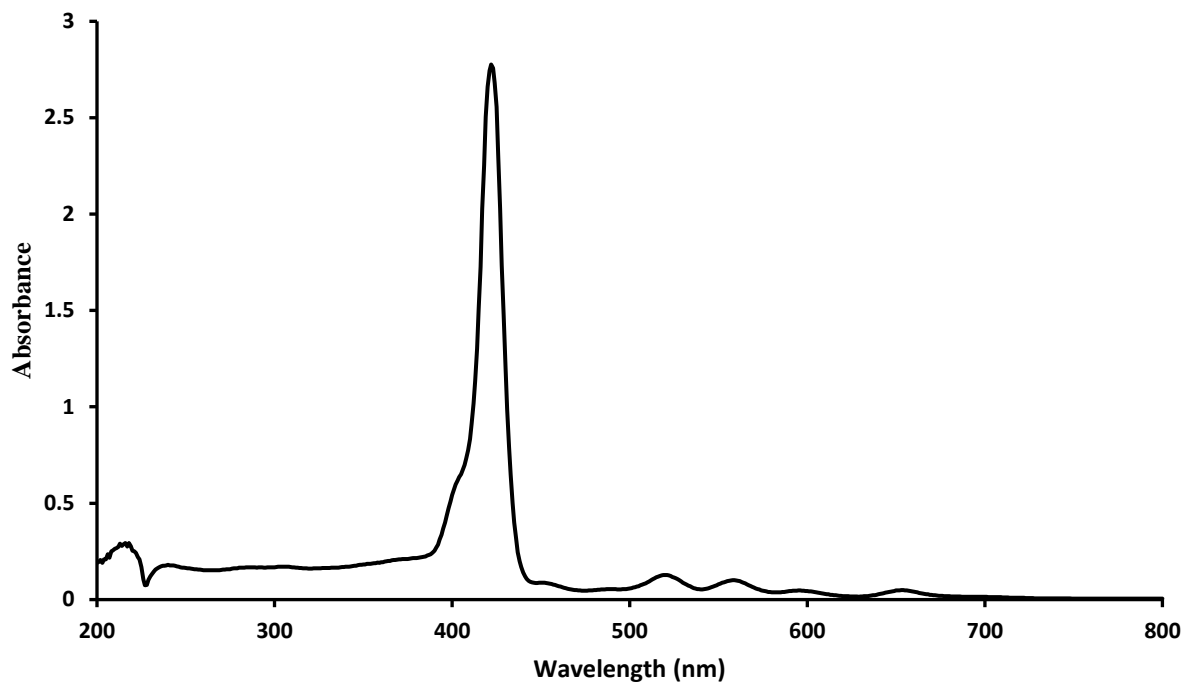


S7. <sup>13</sup>C-NMR (CDCl<sub>3</sub>, 125 MHz) of cDBECPDPzP.

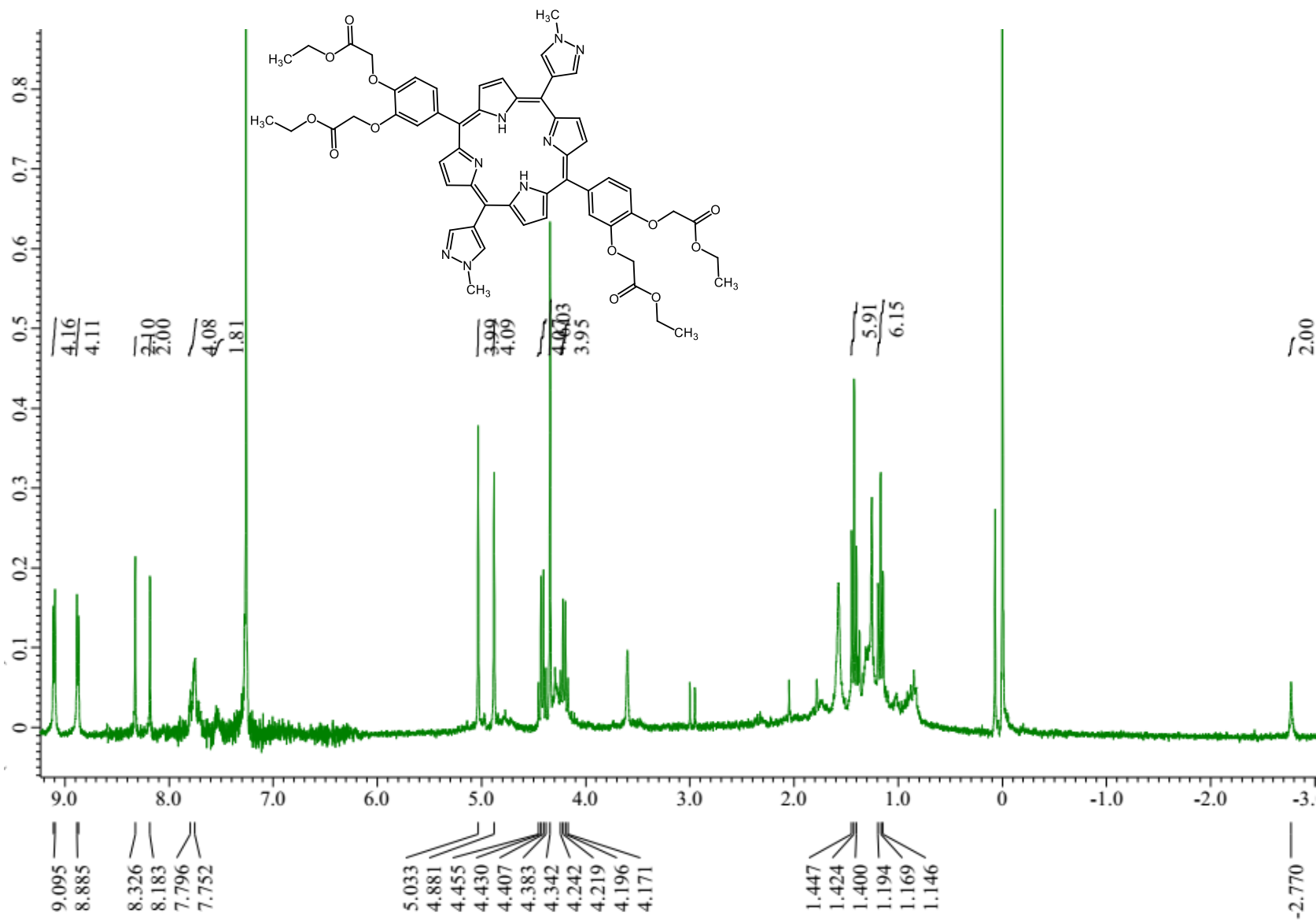


S8. MALDI-TOF LRMS of cDBECPDPzP.

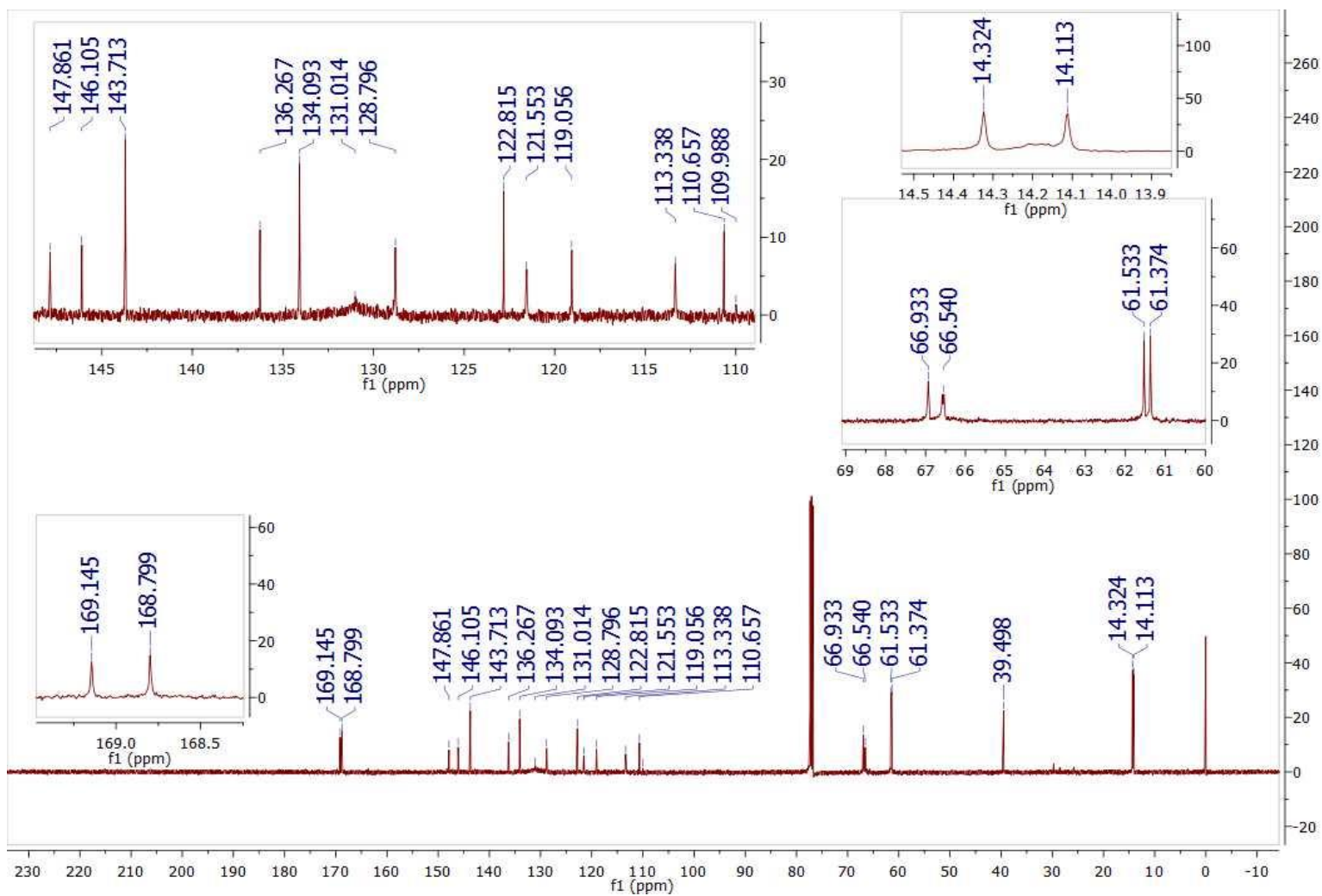




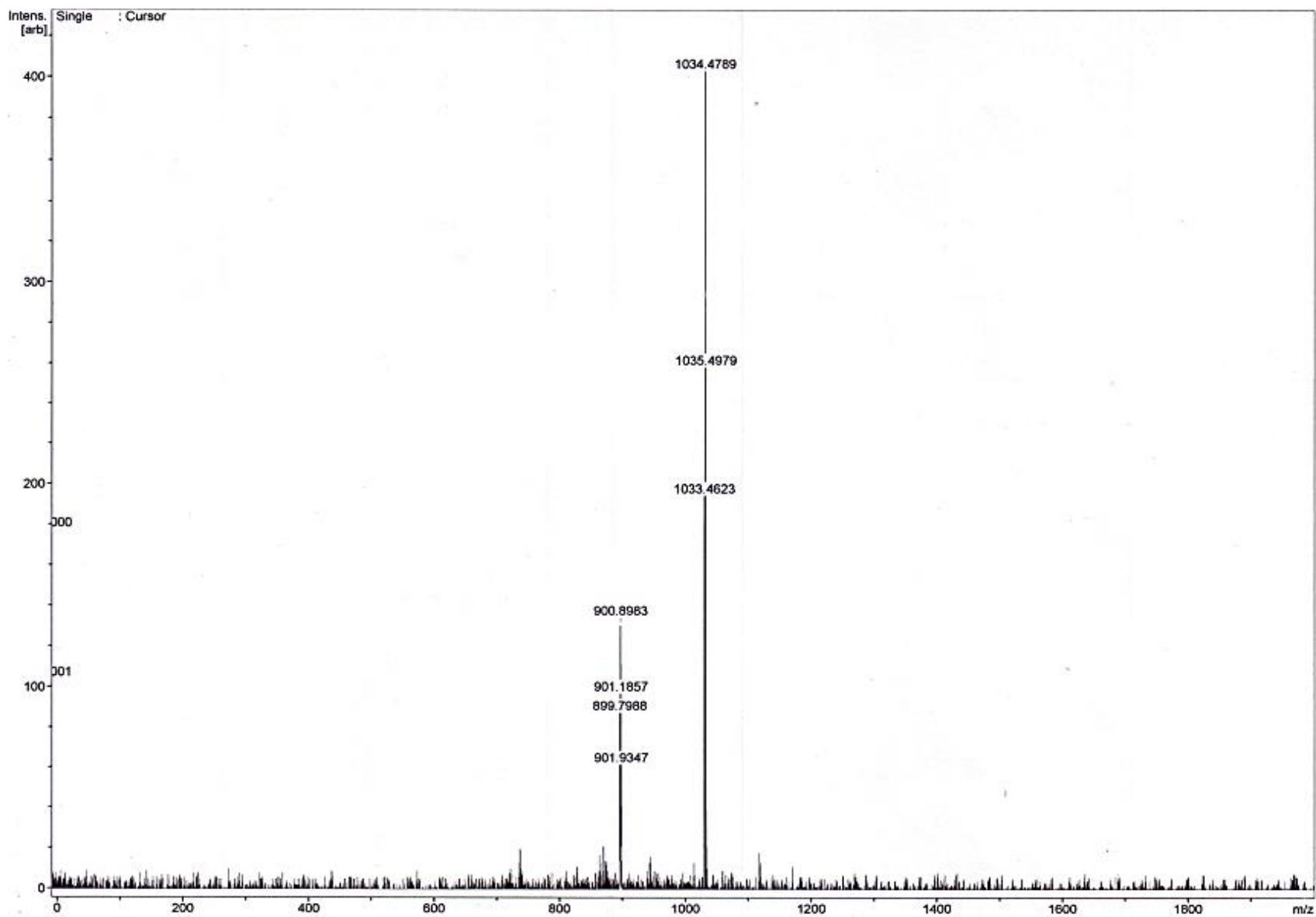
S9. UV/Vis spectra of DBECPDPzP in CH<sub>2</sub>Cl<sub>2</sub>.



S10.  $^1\text{H-NMR}$  ( $\text{CDCl}_3$ , 300 MHz) of DBECPDPzP.



S11.  $^{13}\text{C}$ -NMR ( $\text{CDCl}_3$ , 125 MHz) of DBECPDPzP.



S12. MALDI-TOF LRMS of DBECPDPzP.