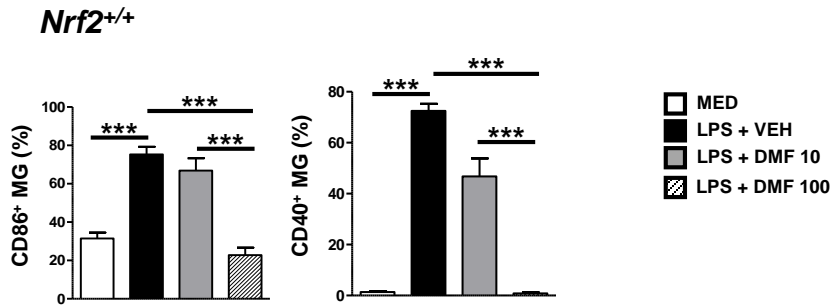
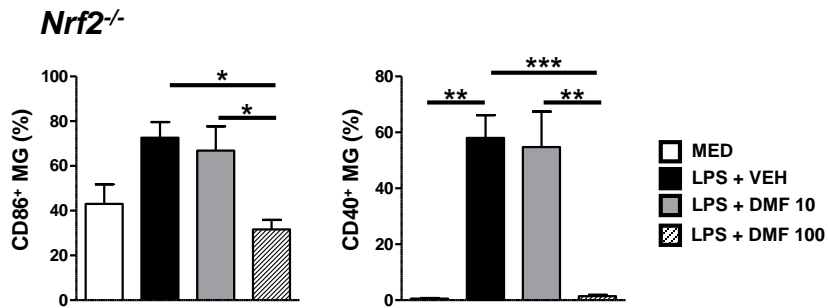


(A)



(B)



(C)

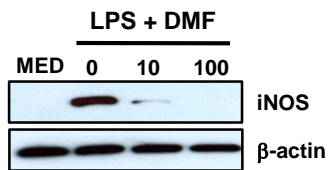


Figure S2.

Inflammatory activation of MG induced by LPS.

(A) The percentage of CD86⁺ and CD40⁺ cells in *Nrf2*^{+/+} MG was measured in each treatment group. Data presented are from five independent experiments. ****p* < 0.001 by one-way ANOVA with Bonferroni's post hoc multiple comparison test. MED, cell culture medium. (B) The percentage of CD86⁺ and CD40⁺ cells in *Nrf2*^{-/-} MG was measured in each treatment group. Data presented are from three independent experiments. **p* < 0.05, ***p* < 0.01, ****p* < 0.001 by one-way ANOVA with Bonferroni's post hoc multiple comparison test. (C) Representative western blot analysis shows that iNOS protein levels were upregulated by LPS (1 μg/ml) stimulation in MG. The cell lysates were prepared immediately following CM collected. DMF treatment suppressed iNOS protein induced by LPS stimulation in MG. Results are from three independent experiments.