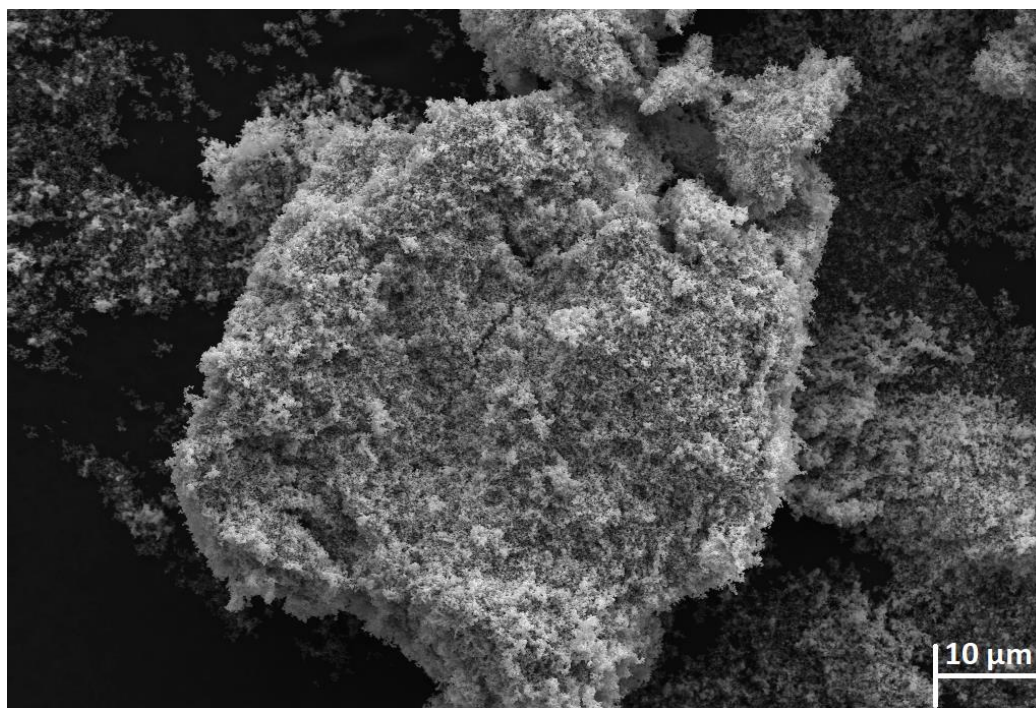




1 *Supporting Information*

2 **Electrophoretic deposition of hydroxyapatite film**
3 **containing Re-doped MoS₂ nanoparticles**

4 **Hila Shalom, Yishay Feldman, Rita Rosentsveig, Iddo Pinkas, Ifat Kaplan-Ashiri,**
5 **Alexey Moshkovich, Vladislav Perfilyev, Lev Rapoport and Reshef Tenne**

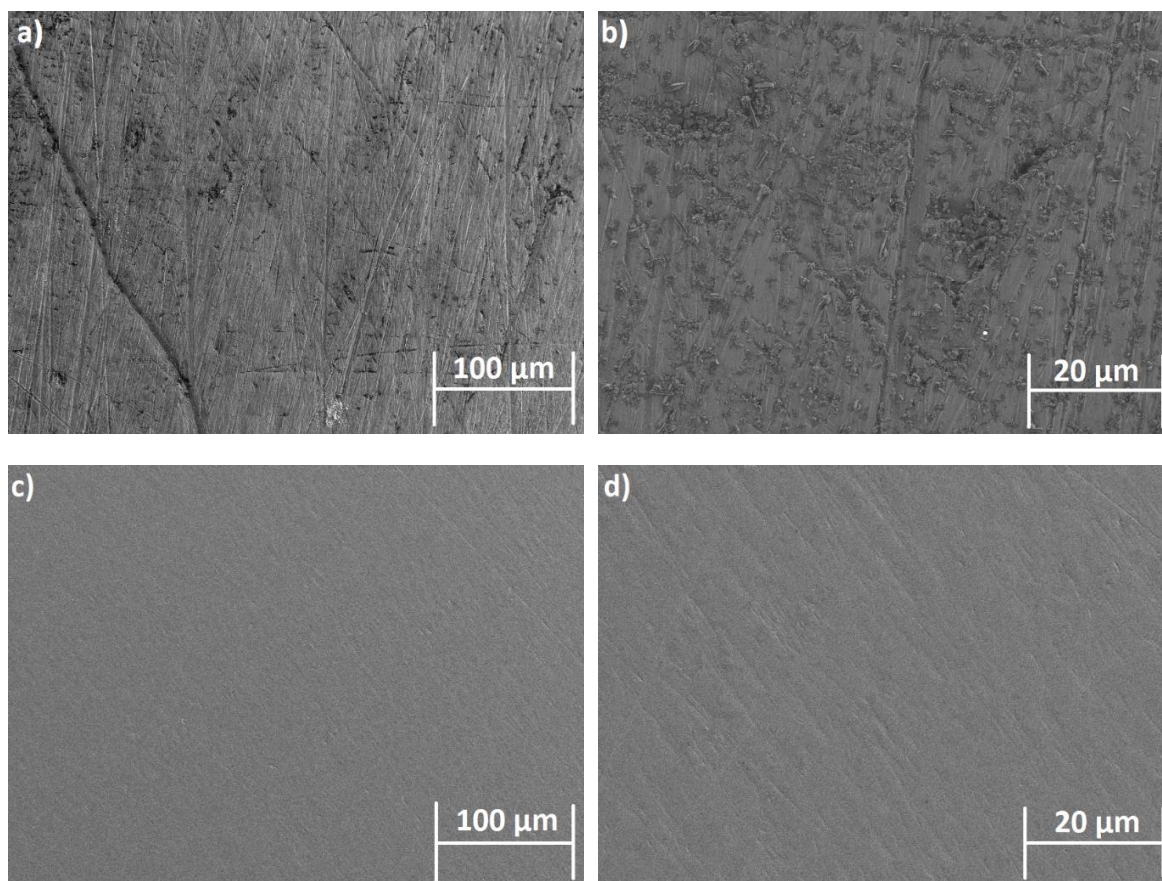


6

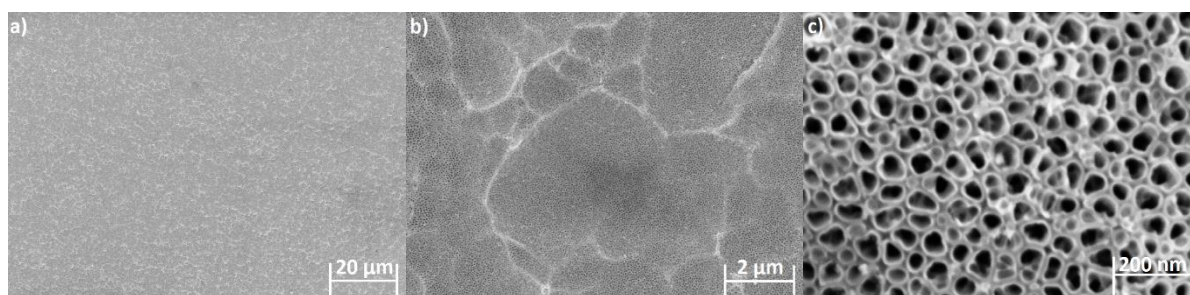
7

Figure S1. Typical SEM view of an agglomerate of Re:IF-MoS₂ nanoparticles.

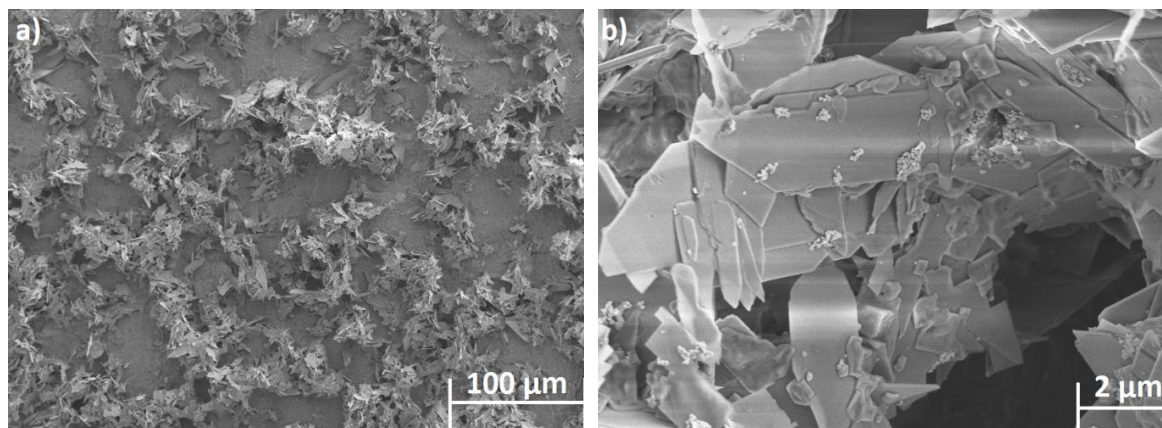
8



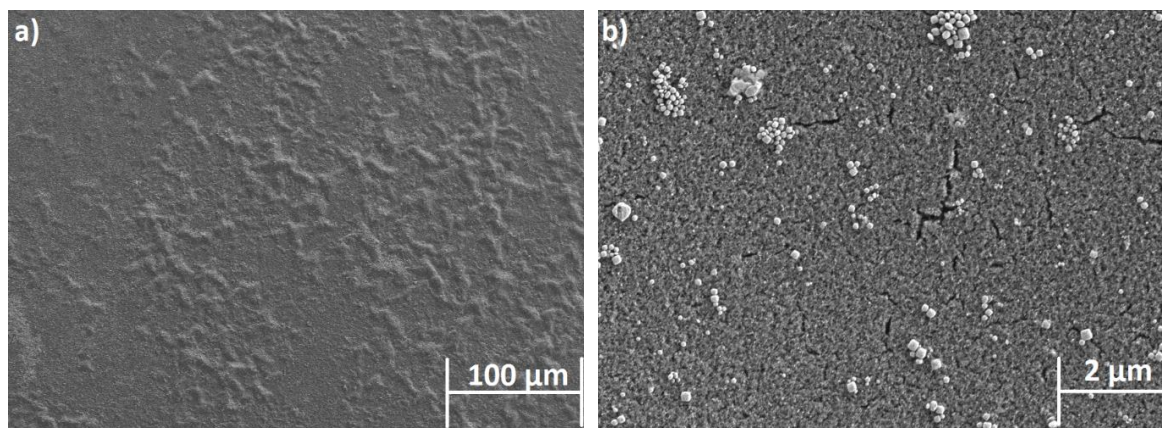
9 **Figure S2.** SEM images of titanium surface (a,b) before and (c,d) after surface treatment in different
 10 magnifications.



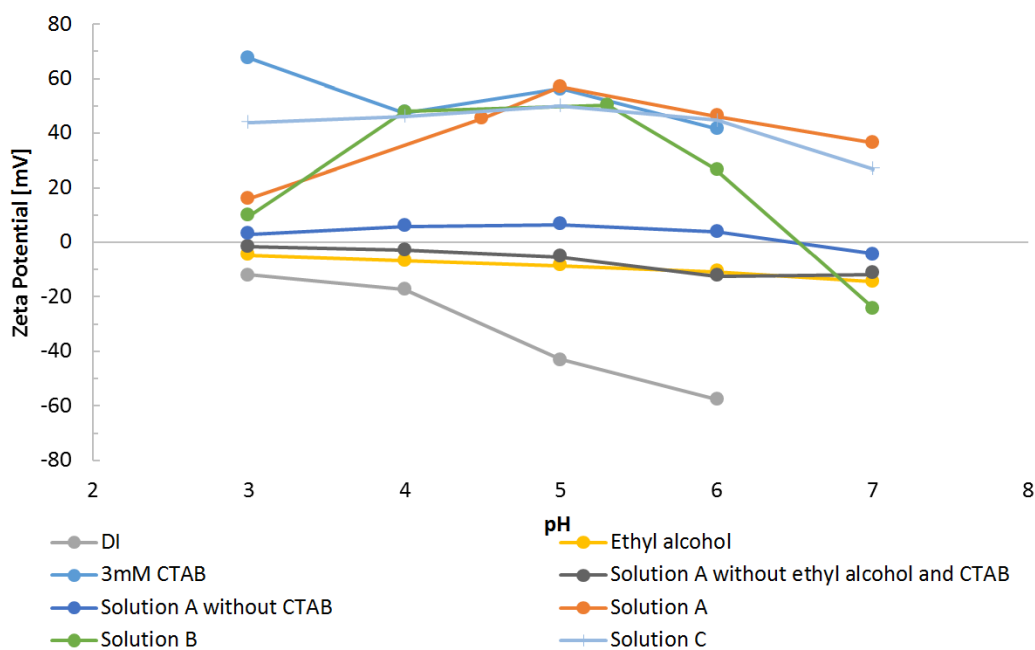
11 **Figure S3.** SEM images of porous titanium after anodization in different magnifications, the average
 12 diameter of the pores (tubes) is 100 nm.
 13



14 **Figure S4.** SEM images of HA with Re:IF-MoS₂ nanoparticles coating obtained from solution B (3 h
15 deposition time) on porous titanium substrate in different magnifications.



16 **Figure S5.** SEM pictures of HA with Re:IF-MoS₂ nanoparticles coating obtained from solution C (1 h
17 deposition time) on porous titanium substrate in different magnifications.



18 **Figure S6.** Zeta-potential vs pH for Re:IF-MoS₂ nanoparticles in different solutions.
19