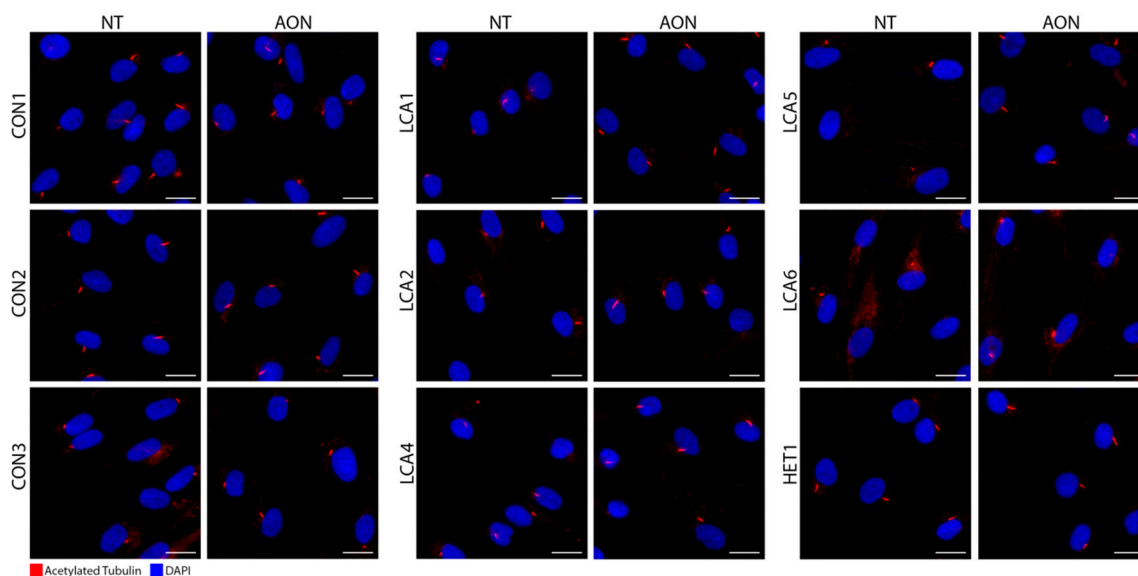




# 1 Antisense Oligonucleotide-Based Splicing Correction 2 in Individuals with Leber Congenital Amaurosis due 3 to Compound Heterozygosity for the c.2991+1655A>G 4 Mutation in CEP290

5 Lonneke Duijkers <sup>1</sup>, L. Ingeborgh van den Born <sup>2</sup>, John Neidhardt <sup>3,4</sup>, Nathalie M. Bax <sup>5,6</sup>,  
6 Laurence H.M. Pierrache <sup>2,7</sup>, B. Jeroen Klevering <sup>5,6</sup>, Rob W.J. Collin <sup>1,6,\*</sup> and Alejandro Garanto <sup>1,6</sup>

7 <sup>1</sup> Department of Human Genetics, Radboud University Medical Center, 6525 GA Nijmegen,  
8 The Netherlands; lonneke.duijkers@radboudumc.nl (L.D.); alex.garanto@radboudumc.nl (A.G.)  
9 <sup>2</sup> The Rotterdam Eye Hospital, 3011 BH Rotterdam, The Netherlands; born@oogziekenhuis.nl (L.I.v.d.B.);  
10 L.Pierrache@oogziekenhuis.nl (L.H.M.P.)  
11 <sup>3</sup> Human Genetics, Faculty of Medicine and Health Sciences, University of Oldenburg, 26129 Oldenburg,  
12 Germany; john.neidhardt@uni-oldenburg.de  
13 <sup>4</sup> Research Center Neurosensory Science, University Oldenburg, 26129 Oldenburg, Germany  
14 <sup>5</sup> Department of Ophthalmology, Radboud University Medical Center, 6525 GA Nijmegen, The Netherlands;  
15 nathalie.bax@radboudumc.nl (N.M.B.); jeroen.klevering@radboudumc.nl (B.J.K.)  
16 <sup>6</sup> Donders Institute for Brain, Cognition and Behaviour, Radboud University Medical Center,  
17 6525 GA Nijmegen, The Netherlands  
18 <sup>7</sup> Department of Ophthalmology, Erasmus Medical Center, 3015 CE Rotterdam, The Netherlands  
19 \* Correspondence: rob.collin@radboudumc.nl; Tel.: +31-24-3613750; Fax: +31-24-3668752



20  
21  
22  
23  
24  
25

**Figure S1.** Cilium staining in all fibroblast cell lines. Representative images of each fibroblast cell line used in the ciliation studies. Control (CON), LCA-affected (LCA) and carrier (HET1) cell lines were used for immunocytochemical analysis in the non-treated (NT) and AON-treated (AON) situations. DAPI was used to stain the nucleus (blue) and Acetylated Tubulin for cilium axoneme detection (red). Scale bar represents 20  $\mu\text{m}$ .