

Molecular evidence of an isolate of mungbean yellow mosaic India virus with a recombinant DNA B component occurring on mungbean from mid-hills of Meghalaya, India

VirusDisease

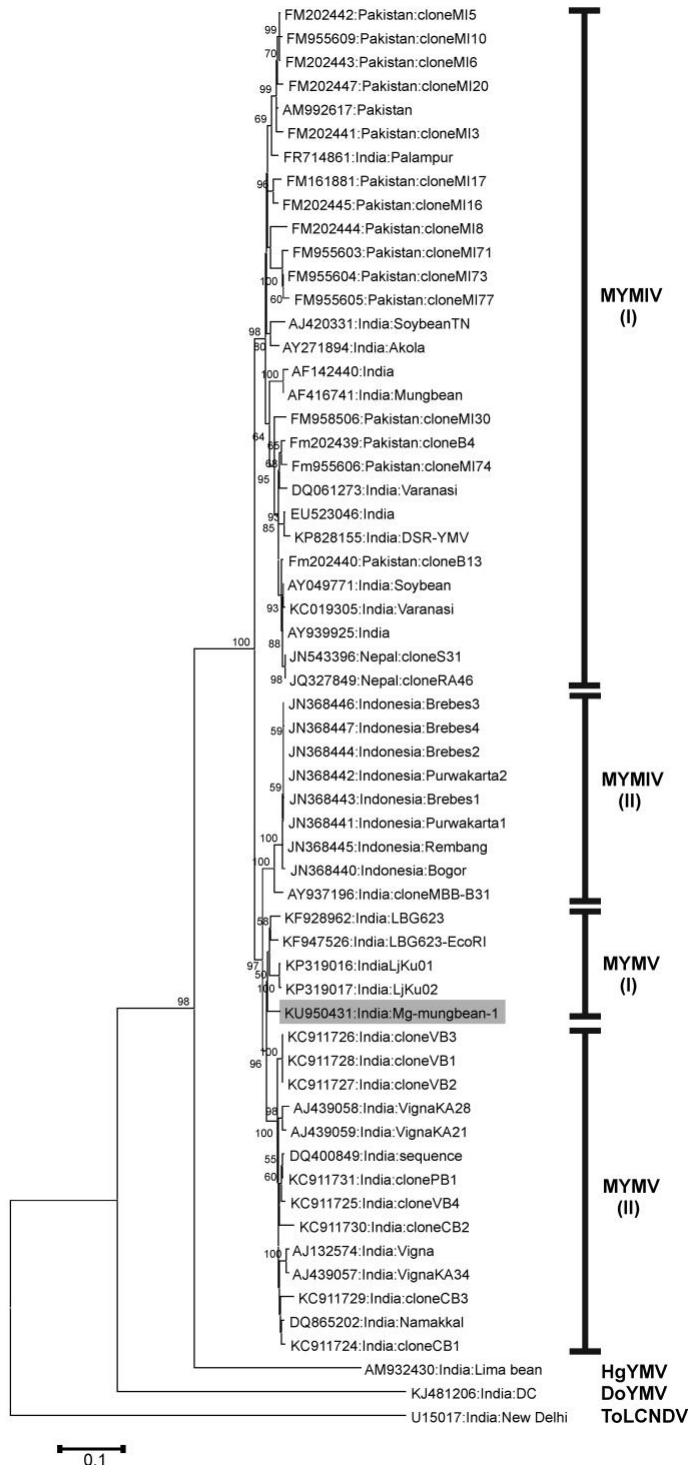
Amrita Banerjee^{a*§}, Yashi Umbrey^b, Rohit M Yadav^c and Somnath Roy^c

^aICAR Research Complex for NEH Region, Umiam 793 103, Meghalaya, India

^bCollege of Post Graduate Studies, Central Agricultural University, Umiam 793 103, Meghalaya, India

^cICAR-National Bureau of Plant Genetic Resources, Regional Station, Umiam 793 103, Meghalaya, India

[§]Corresponding author: amrita.banerjee@icar.gov.in / amrita.ars@gmail.com



Supplementary Fig. 3 Phylogenetic relationship based on nucleotide sequences of DNA B of YMV isolate from Meghalaya (Mg-mungbean-1), reference isolates of legume-infecting begomoviruses (MYMIV, MYMV, HgYMV and DoYMV) from South-East Asia, and an outgroup member *Tomato leaf curl New Delhi virus* (ToLCNDV). Each sequence is labelled with the GenBank accession number followed by origin and isolate name. Current isolate has been shown in the box

