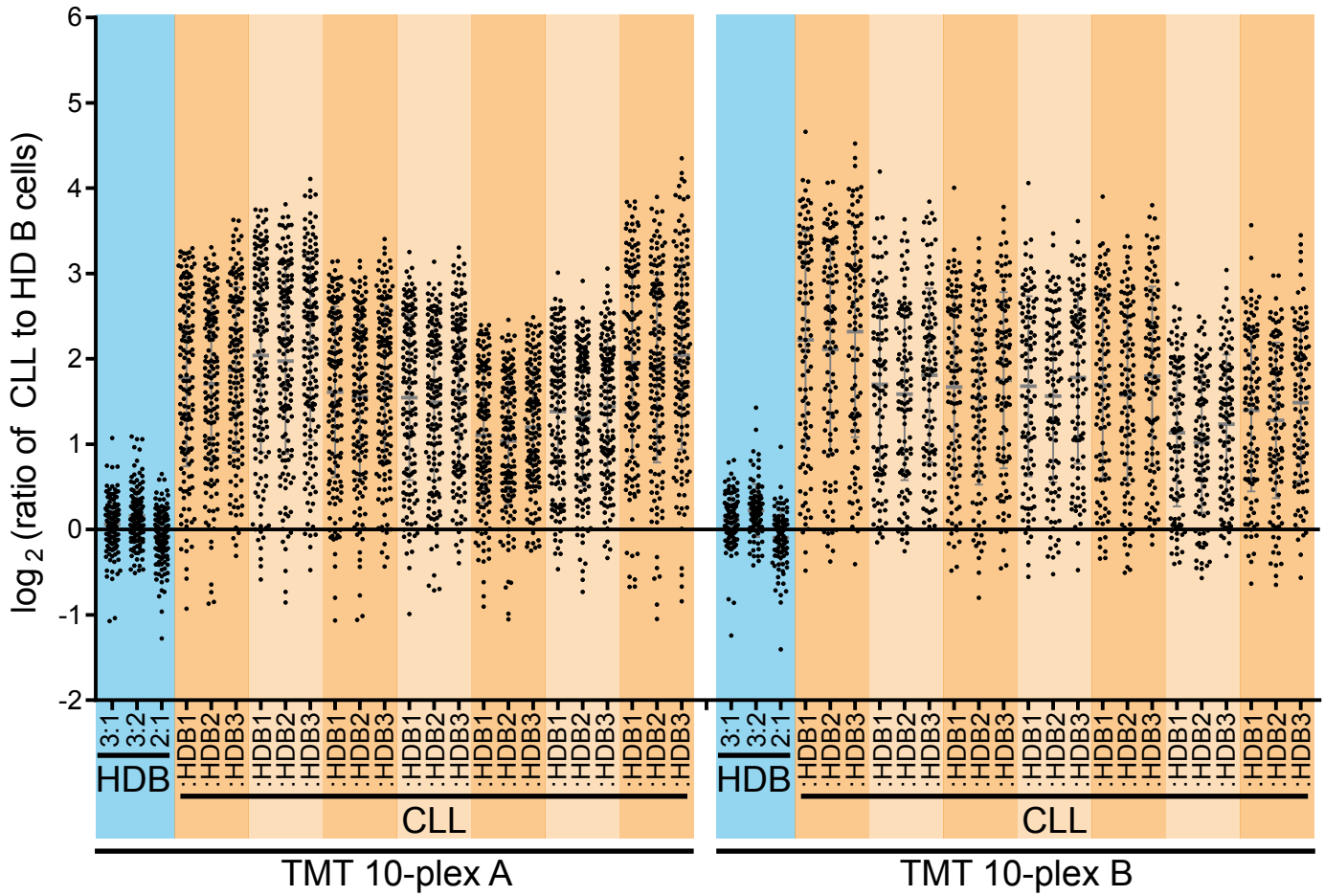
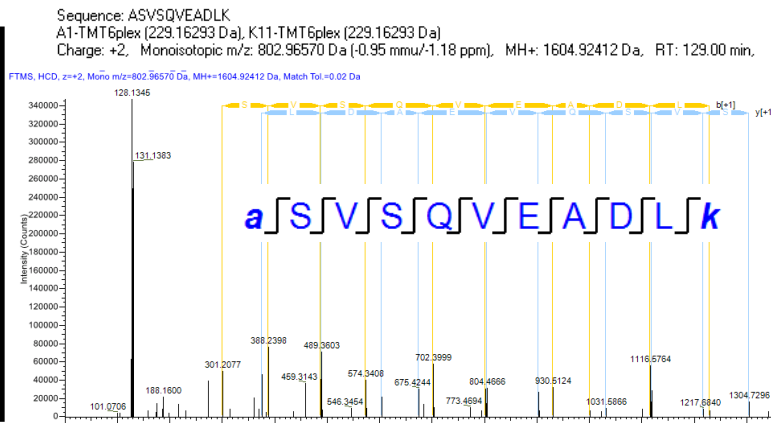


CKAP4



TMT
10-plex A



TMT
10-plex B

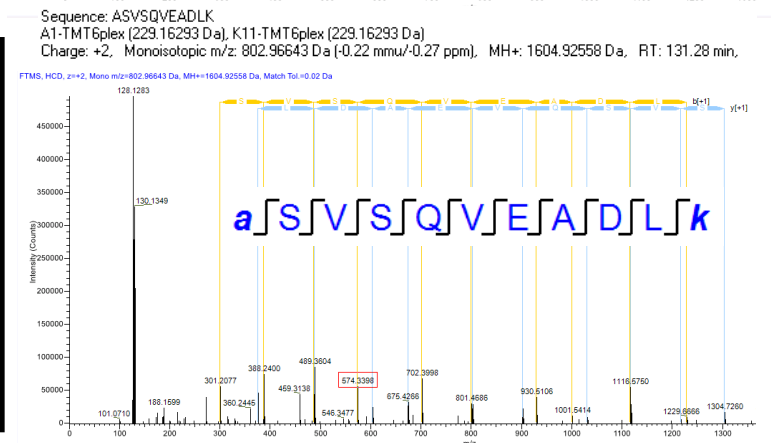
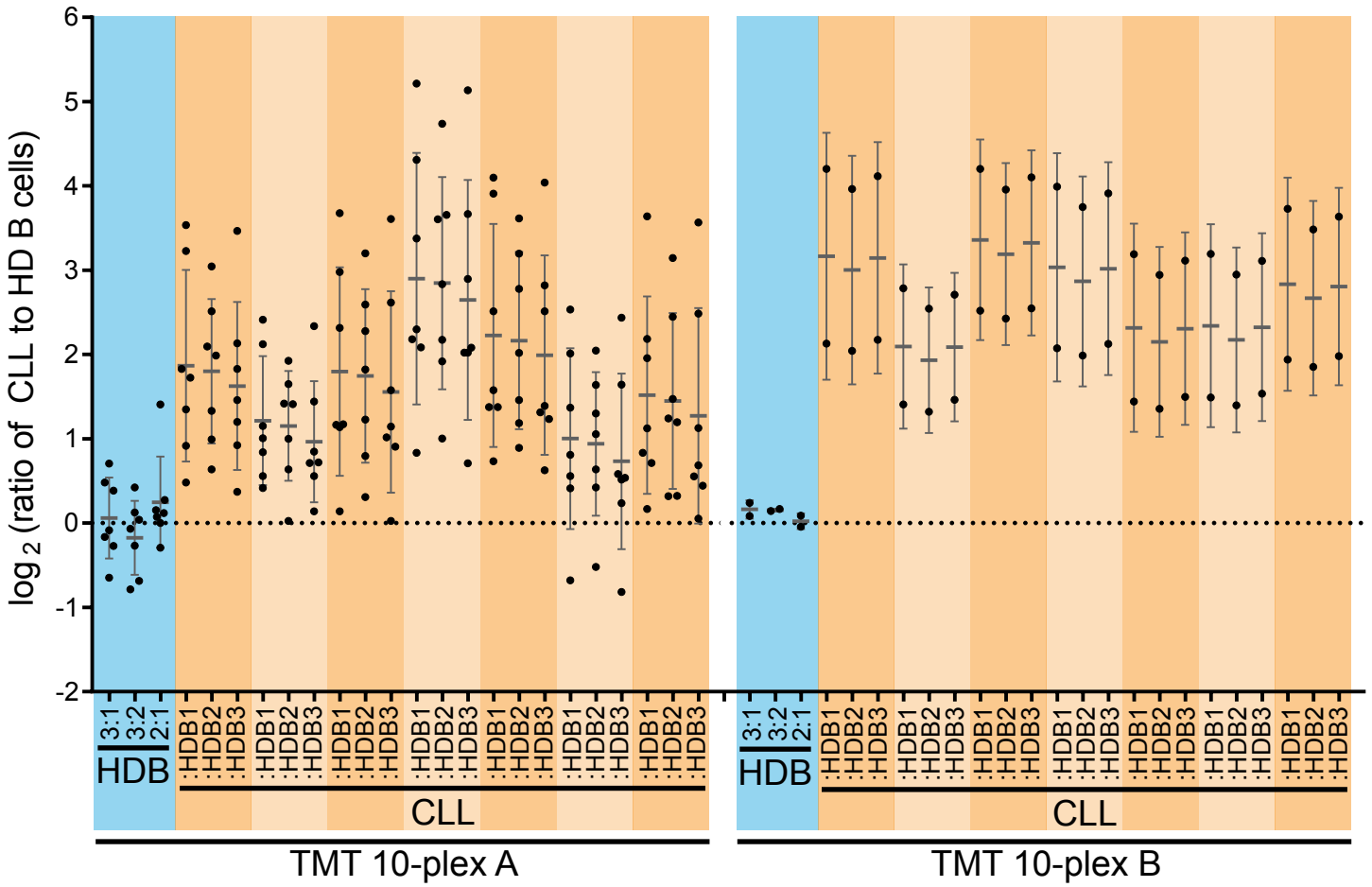


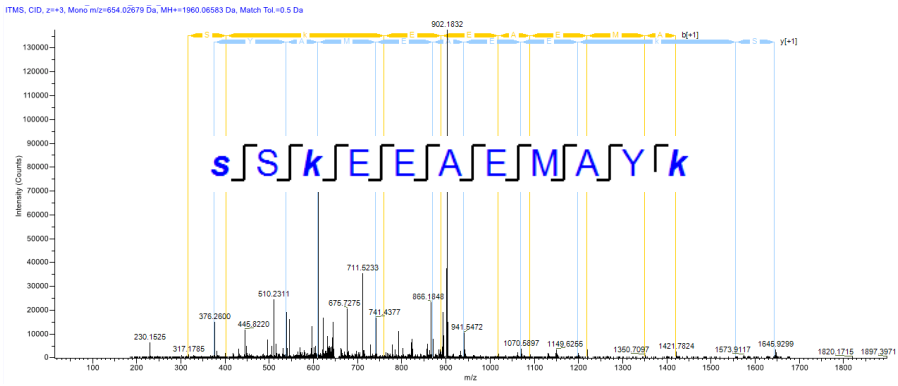
Figure S4. All PSM quantitations uniquely matching the 10 previously unobserved cell surface proteins for all 14 CLL samples relative to each of the 3 healthy donor B-cell samples. Additionally, representative spectra matching unique peptides to these proteins identified independently in both TMT 10-plex experiments.

PIGR



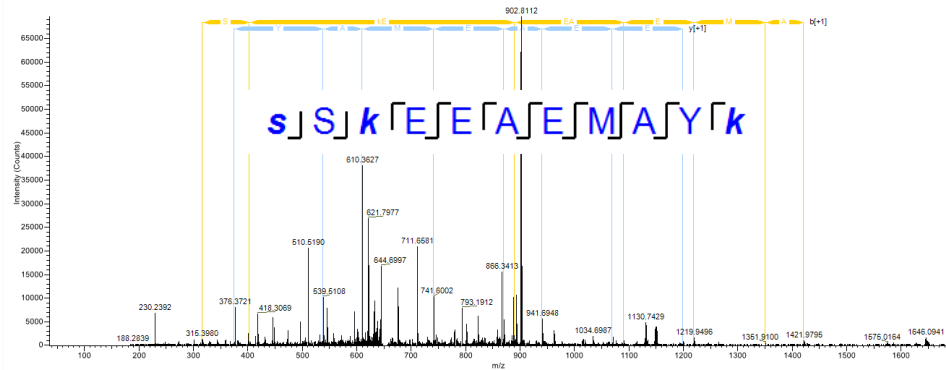
TMT 10-plex A

Sequence: SSKEEAEMAYK
 S1-TMT6plex (229.16293 Da), K3-TMT6plex (229.16293 Da), K11-TMT6plex (229.16293 Da)
 Charge: +3, Monoisotopic m/z: 654.02679 Da (-0.22 mmu/-0.34 ppm), MH+: 1960.06583 Da, RT: 66.79 min.

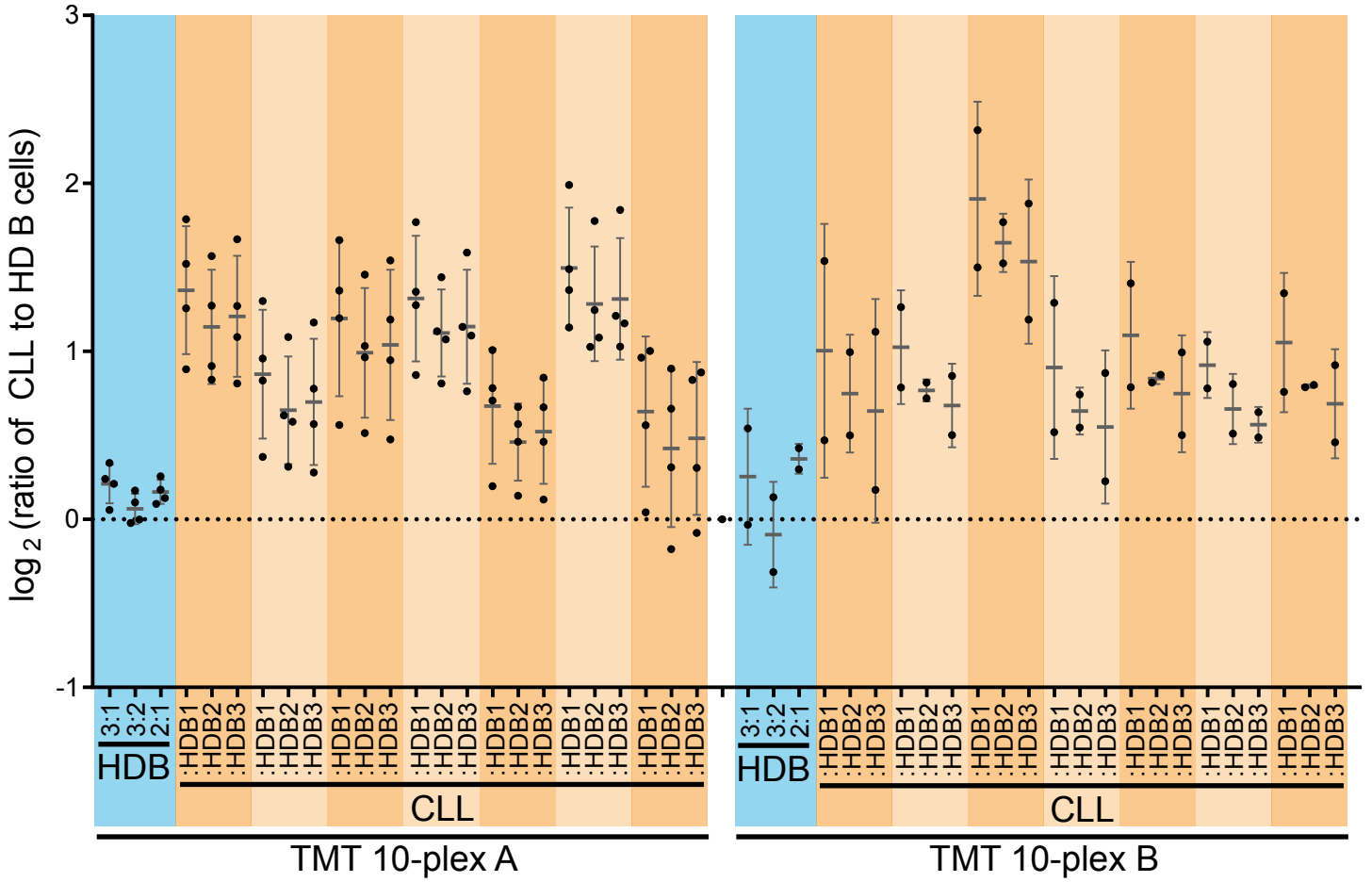


TMT 10-plex B

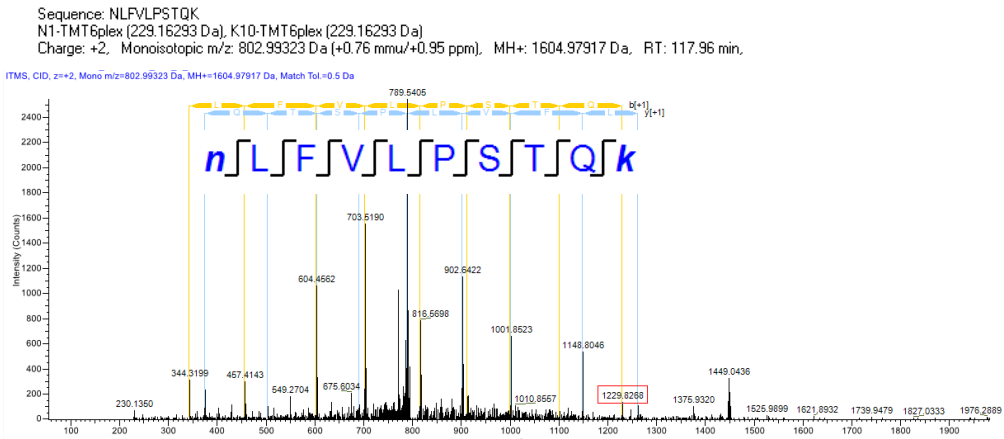
Sequence: SSKEEAEMAYK
 S1-TMT6plex (229.16293 Da), K3-TMT6plex (229.16293 Da), K11-TMT6plex (229.16293 Da)
 Charge: +3, Monoisotopic m/z: 654.02545 Da (-1.57 mmu/-2.4 ppm), MH+: 1960.06180 Da, RT: 61.18 min.



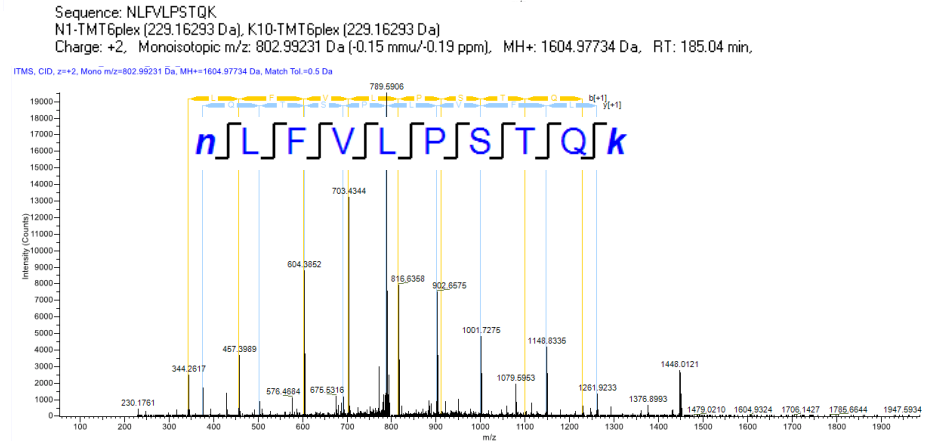
LAX1



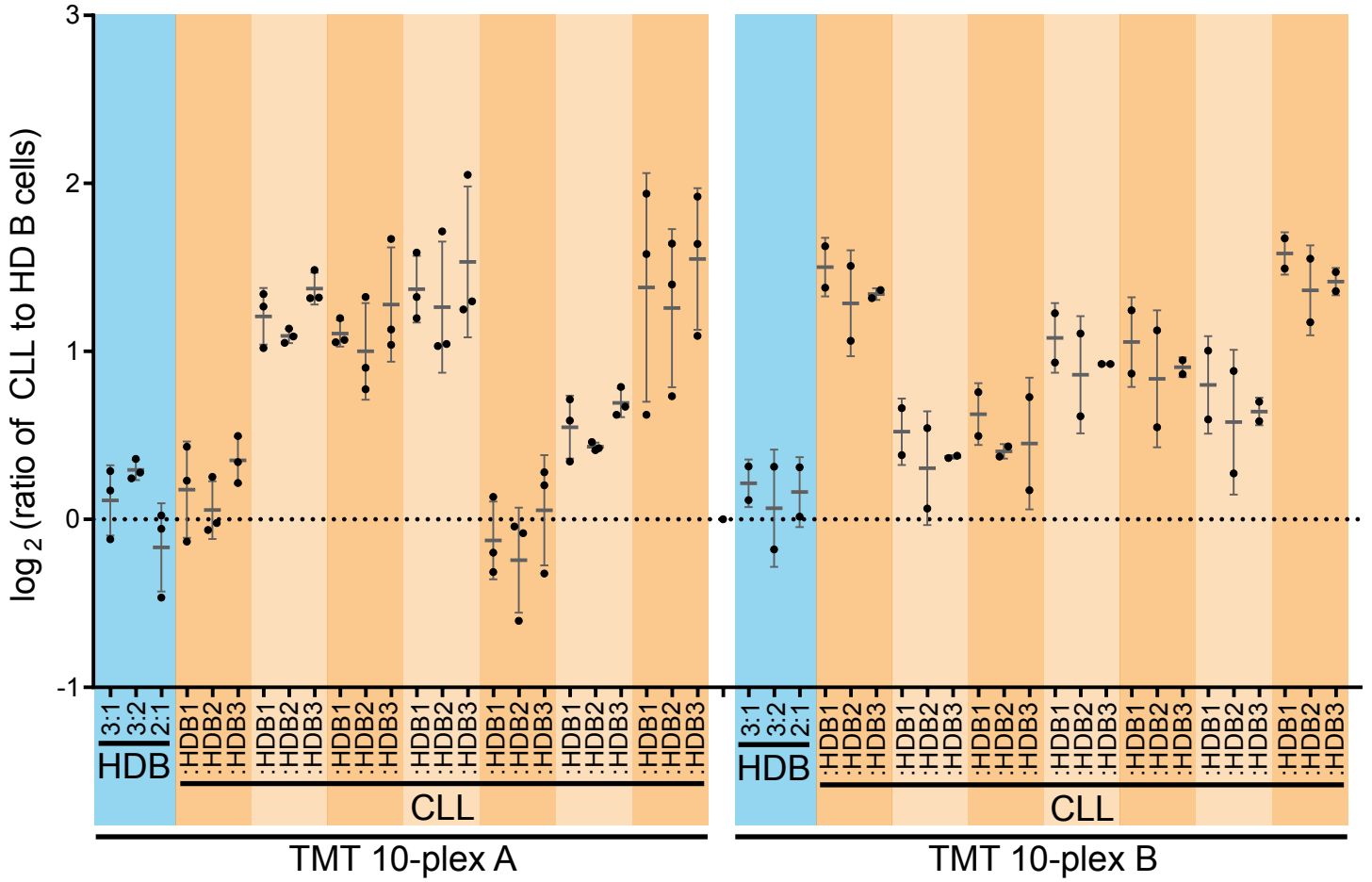
TMT
10-plex A



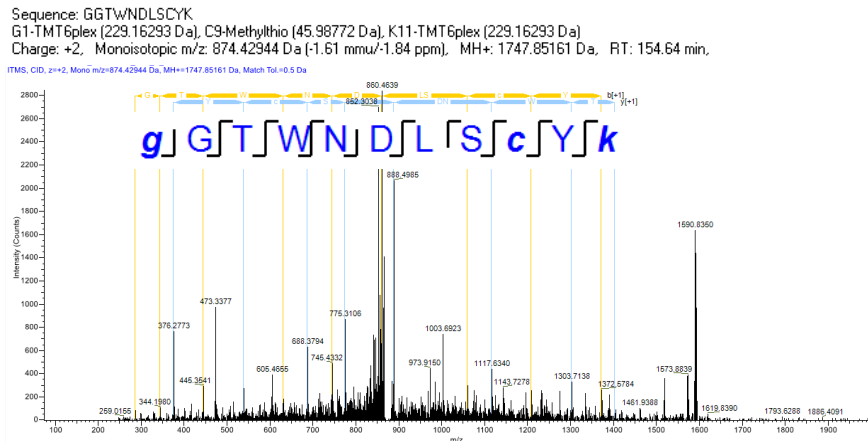
TMT
10-plex B



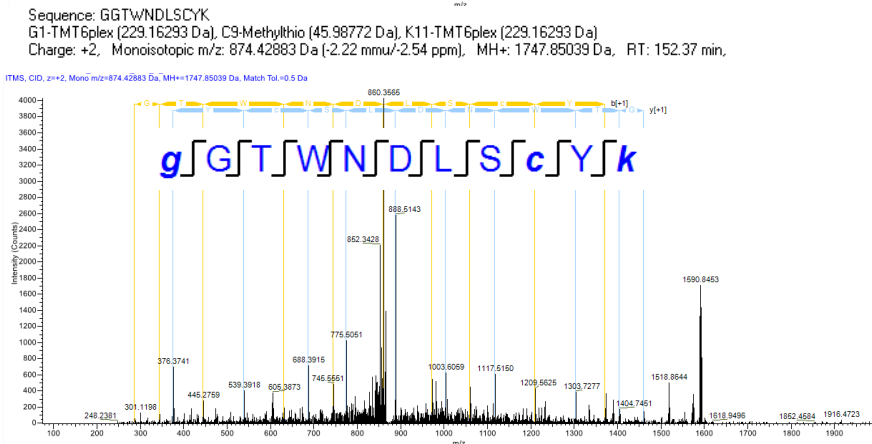
CLEC17A



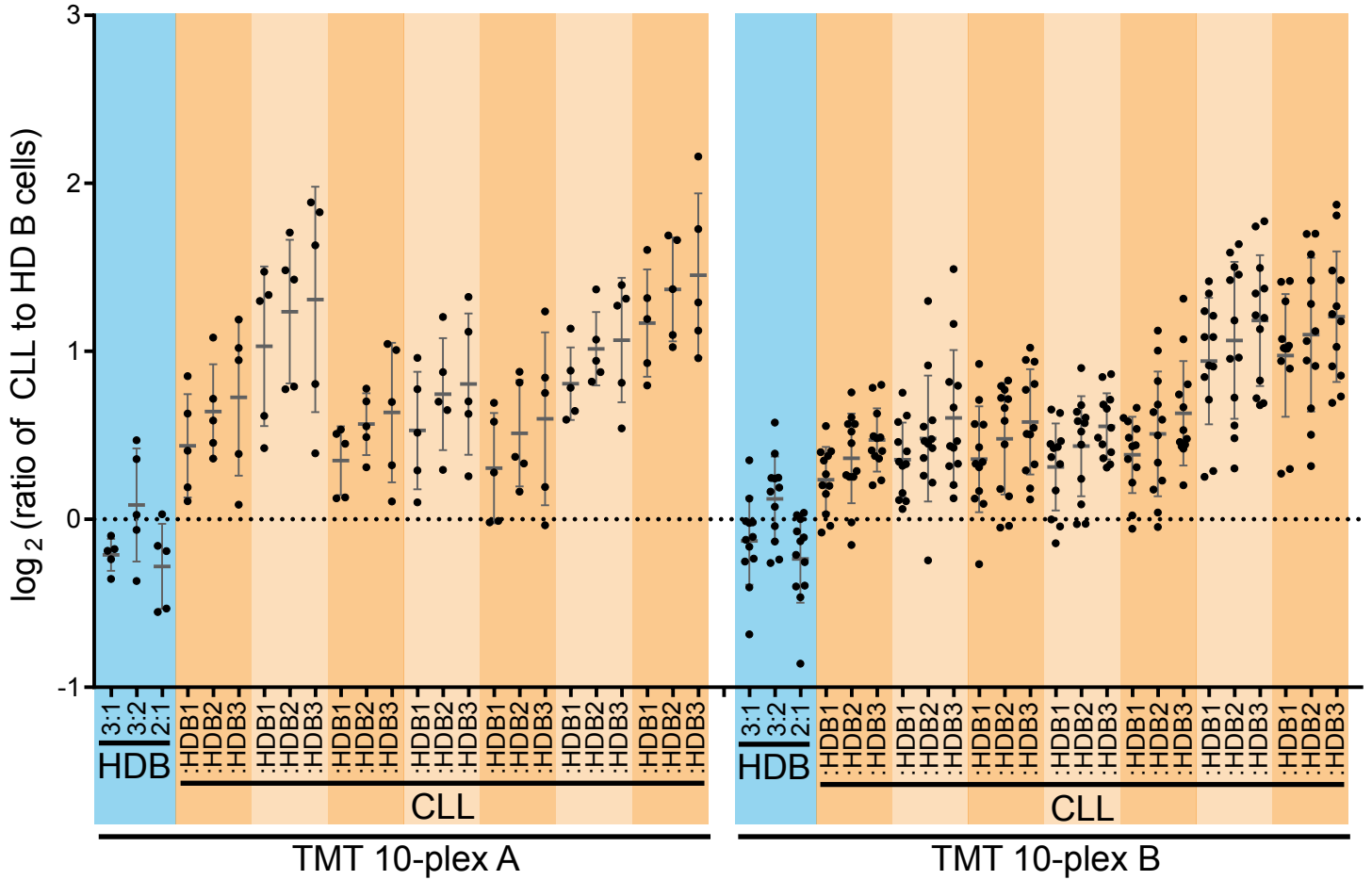
TMT
10-plex A



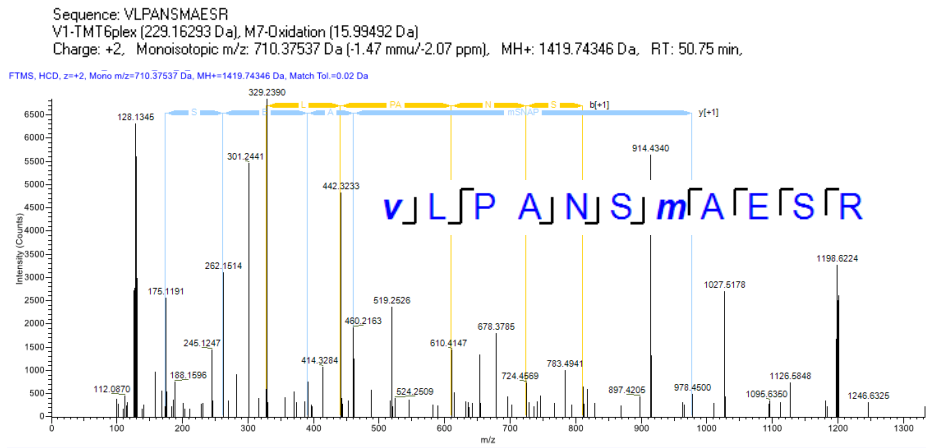
TMT
10-plex B



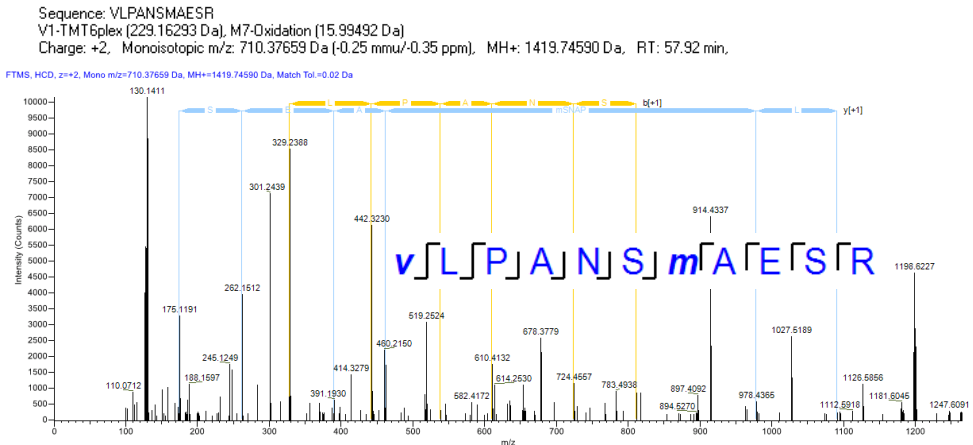
ATP2B4



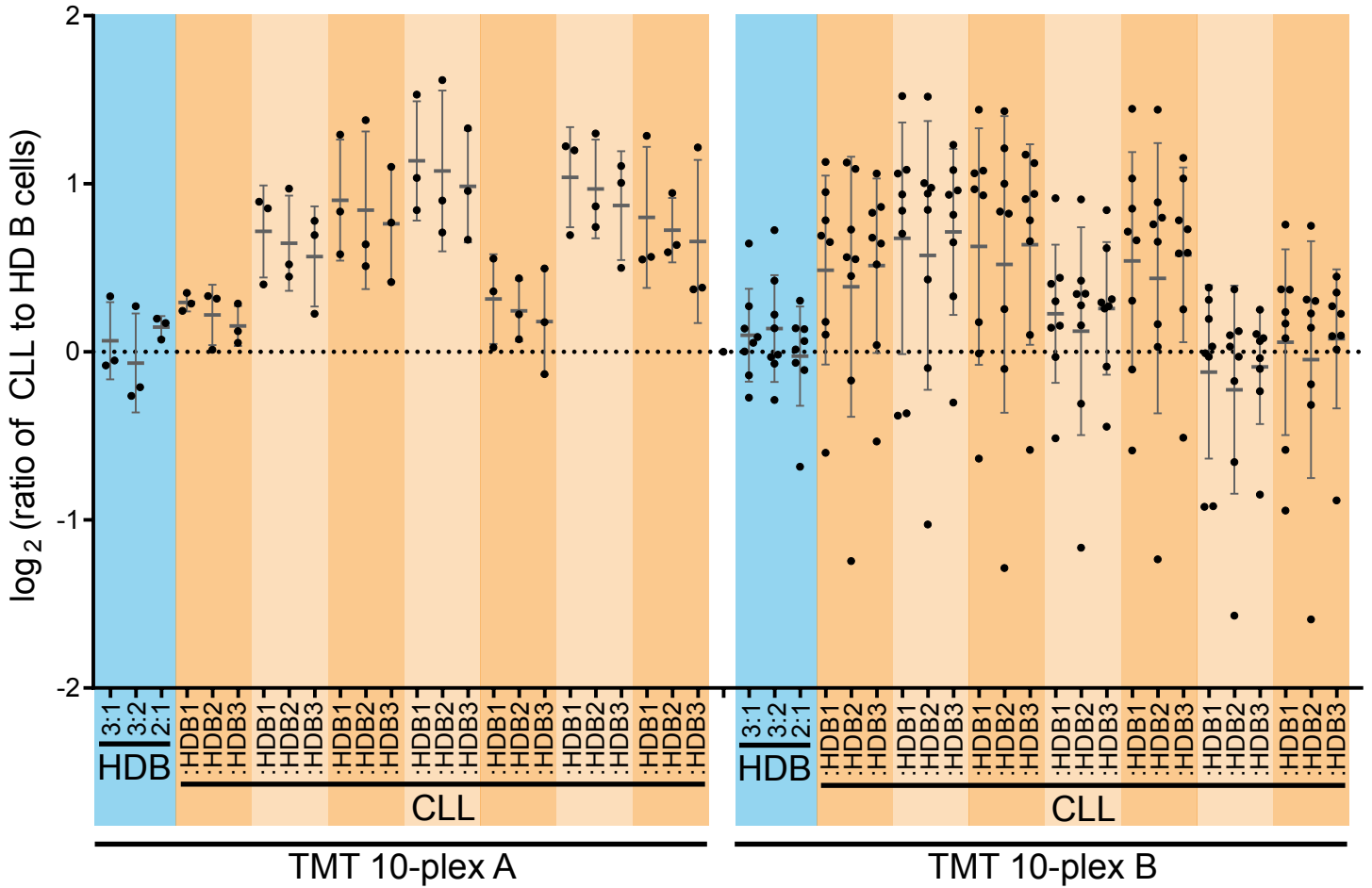
TMT 10-plex A



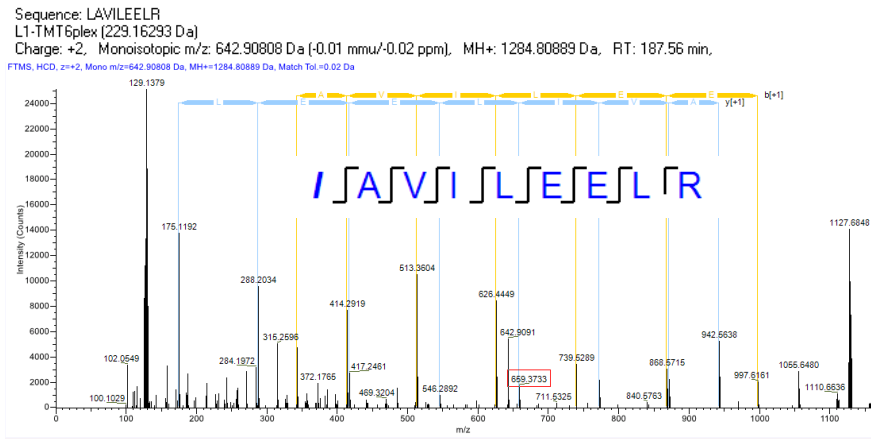
TMT 10-plex B



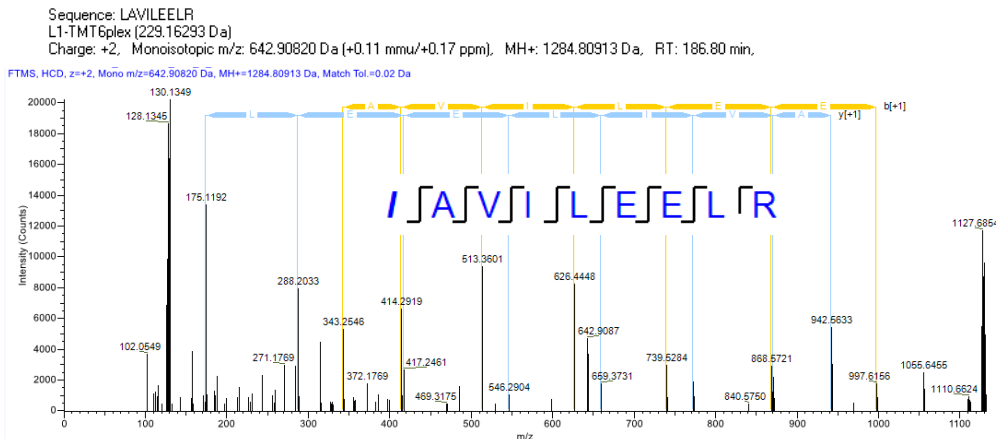
TMCC3



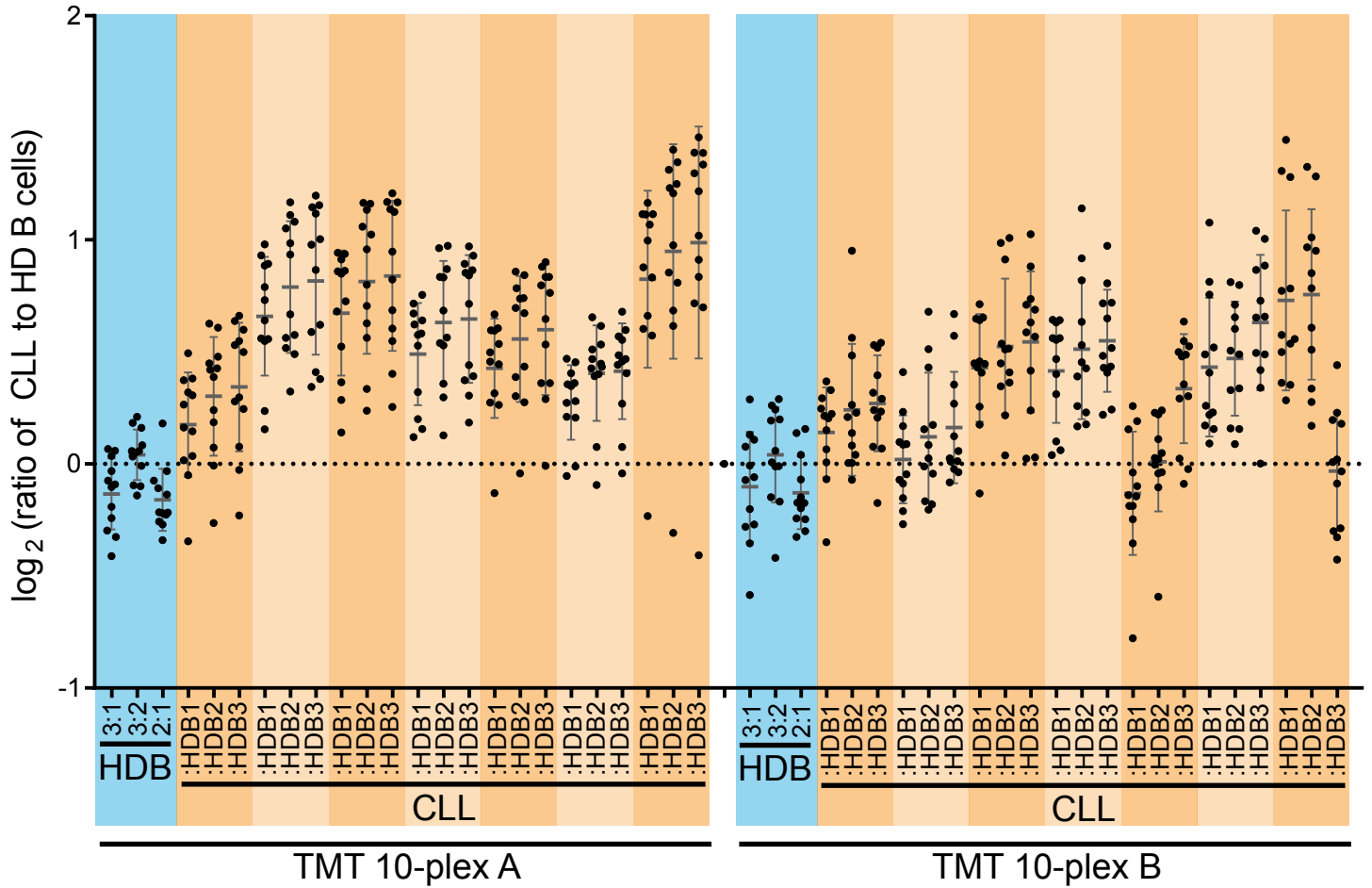
TMT
10-plex A



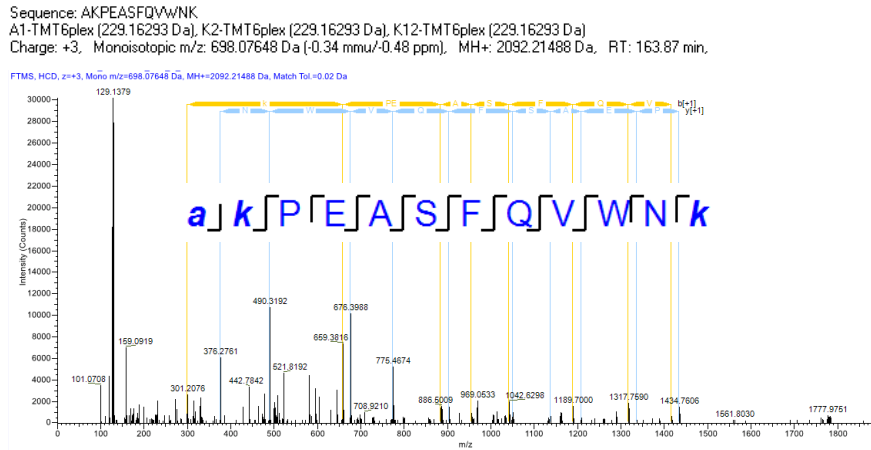
TMT
10-plex B



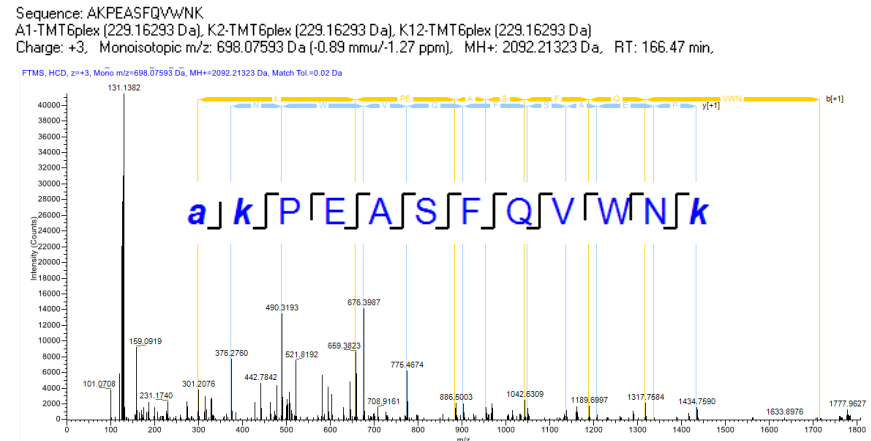
ST6GAL1



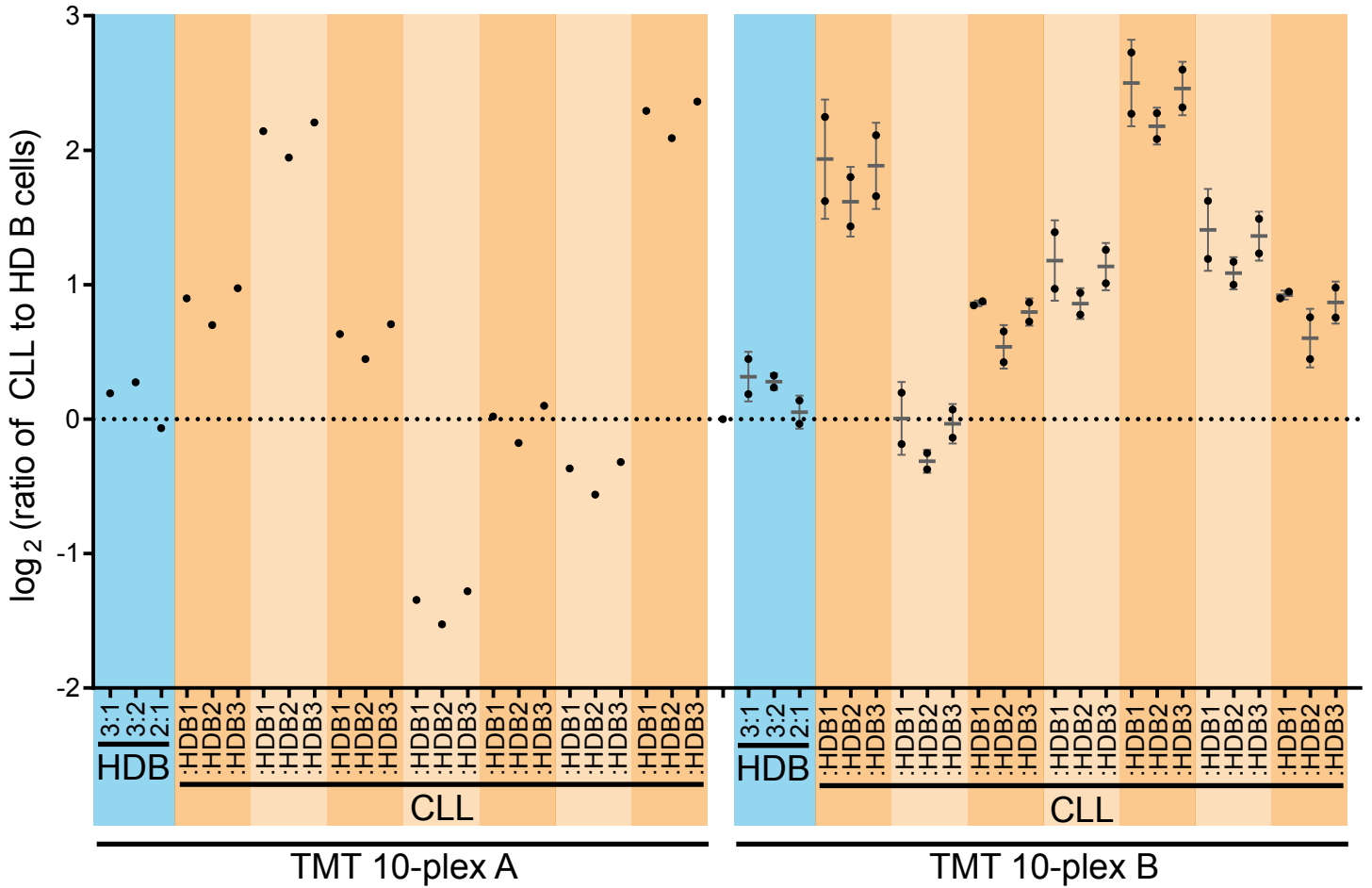
TMT 10-plex A



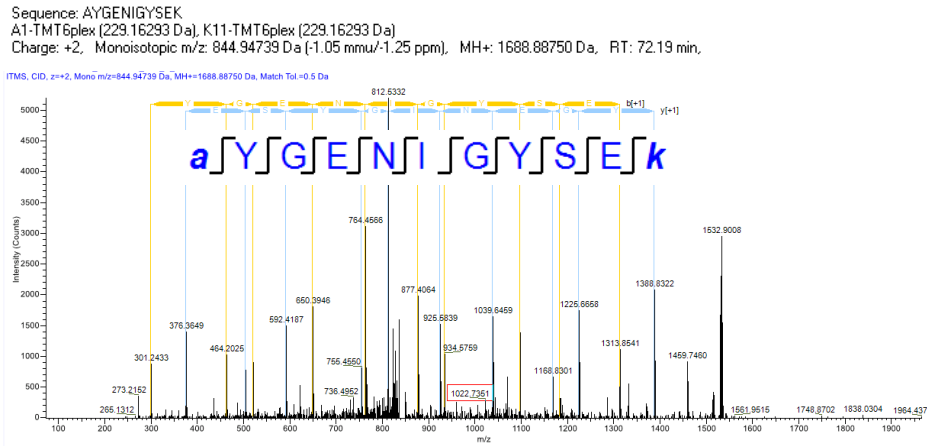
TMT 10-plex B



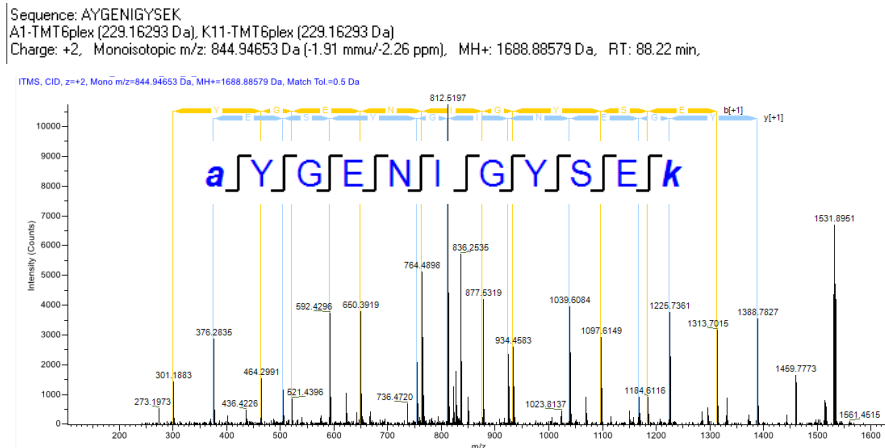
ATP1B1



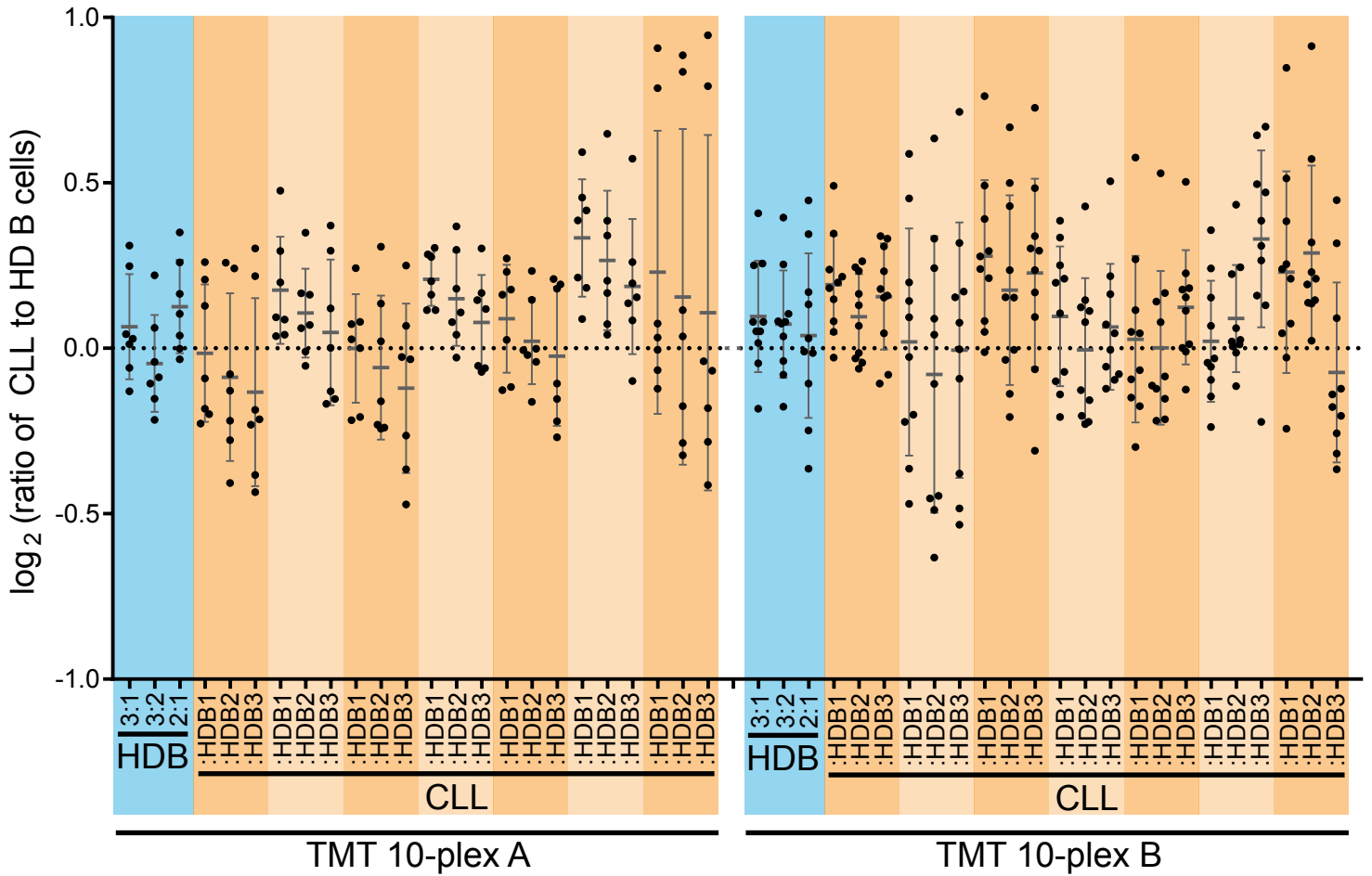
TMT
10-plex A



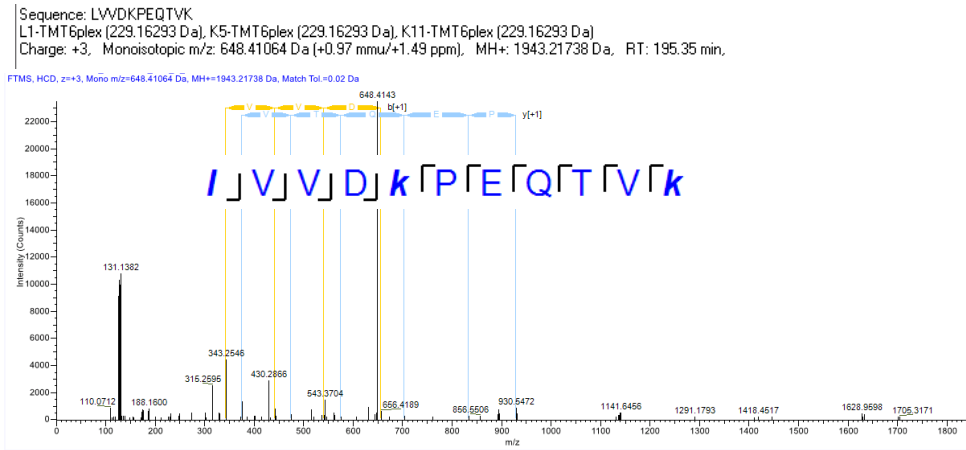
TMT
10-plex B



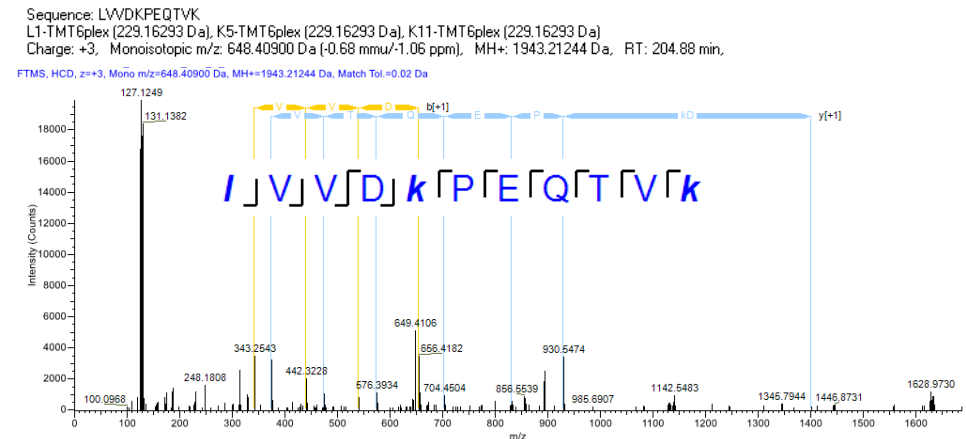
C17orf80



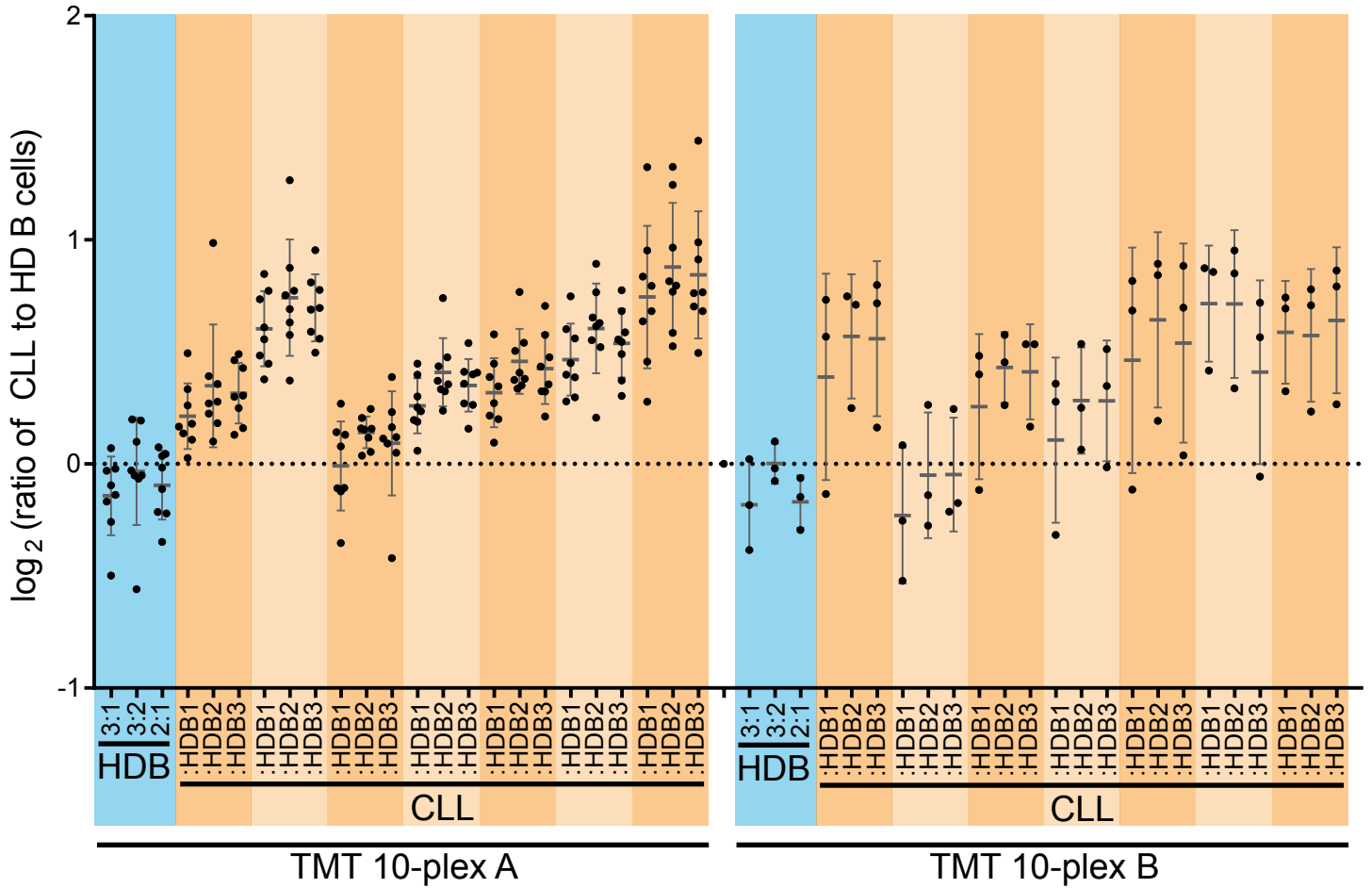
TMT
10-plex A



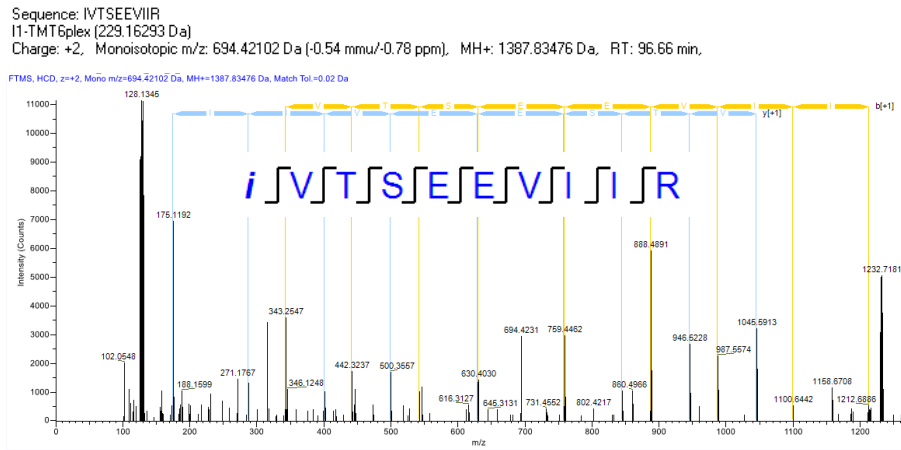
TMT
10-plex B



NPTN



TMT 10-plex A



TMT 10-plex B

