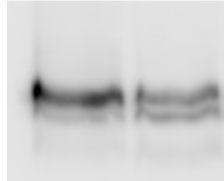


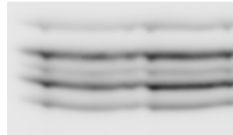
GFP-ChsB levels

vps52 Δ wild-type



anti-GFP WB

vps52 Δ wild-type



loading control

anti-PSTAIR (CDKs) WB

S5 Figure. Levels of GFP-ChsB are similar in wt and vps52 Δ cells.

Anti-GFP was used to detect GFP-ChsB. Anti-PSTAIR antibody (AbCam) was used for the loading control. This antibody detects a conserved epitope present in cyclin-dependent kinases. In *A. nidulans* it reacts with PhoA (41.3 kDa), NimX^{Cdc2} (36.8 kDa) and PhoB (35.9 kDa) cyclin-dependent kinases.