

1 Supplementary Tables

2

3 Table S.1. Bacteria recovered from hand dryer air at different distances*

4

5

6 Average numbers of colonies recovered +/- SD

7 2 in from hand dryer 12 in from hand dryer

8 145.8 ± 65.7 80.0 ± 70.3

9 *4 plates were exposed in one bathroom for 1 min for each distance. Differences did not

10 reach statistical significance.

11

12 Table S.2. Km^r sporeformers deposited on plates by hand dryer air in bathrooms on
 13 different floors and in different buildings*

14	Building:	2	1	A
15	Floor	Km ^r sporeformers - % of total colonies ¹		
16	1	5.0	2.8	N.A ²
17	2 ³	5.0	3.6	N.A ²
18	3	0.9	6.2	N.A ²
19	4	2.6	3.3	3.5
20	5	6.9	6.8	2.5
21	6	5.8	13.1	2.0
22	7	3.6	8.5	1.5

23 *Total bacterial colonies as well as those of Km^r sporeformers deposited on two agar plates
 24 by hand dryer air on two occasions in men's and women's bathrooms on various floors in
 25 basic science research buildings 1 and 2, and above the academic (A) building were
 26 determined as described in Methods.

27 ¹For each floor, values shown are averages of numbers of Km^r sporeformers on plates in 4
 28 men's and women's bathrooms divided by the total numbers of colonies on 4 plates each
 29 in men's and women's bathrooms times 100%.

30 ²Not applicable. Bathrooms on these floors above the academic building did not have hand
 31 dryers.

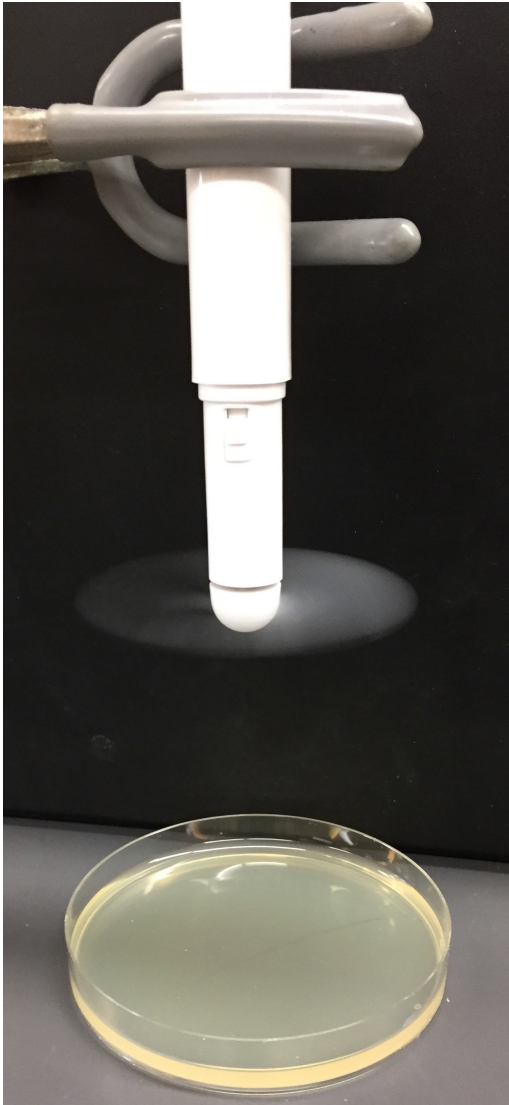
32 ³Floor where the laboratory in building 1 that produces large amounts of Km^r spores of *B.*
 33 *subtilis* strain PS533 is located.

34

35 Supplementary figure

36 Fig. S.1. Photograph of how bathroom air moved by a small fan was sampled for bacteria.

37 The distance between the fan blades and the LB agar surface of the plate is 3.5 in.



38

39

40

41