

Use of SU8 as a stable and biocompatible adhesion layer for gold bioelectrodes

Bruno F.E. Matarèse¹, Paul L.C. Feyen², Aniello Falco³, Fabio Benfenati^{2,4},
Paolo Lugli³, John C. de Mello¹

¹Imperial College London, Exhibition Road, South Kensington, London SW7 2AY, UK

²Center for Synaptic Neuroscience and Technology,

Istituto Italiano di Tecnologia, 16132 Genoa, Italy

³Faculty of Science and Technology, Free University of Bolzano,

Bozen, 39100 Bolzano, Italy

^{2,4}Department of Experimental Medicine, University of Genoa, 16132 Genoa, Italy

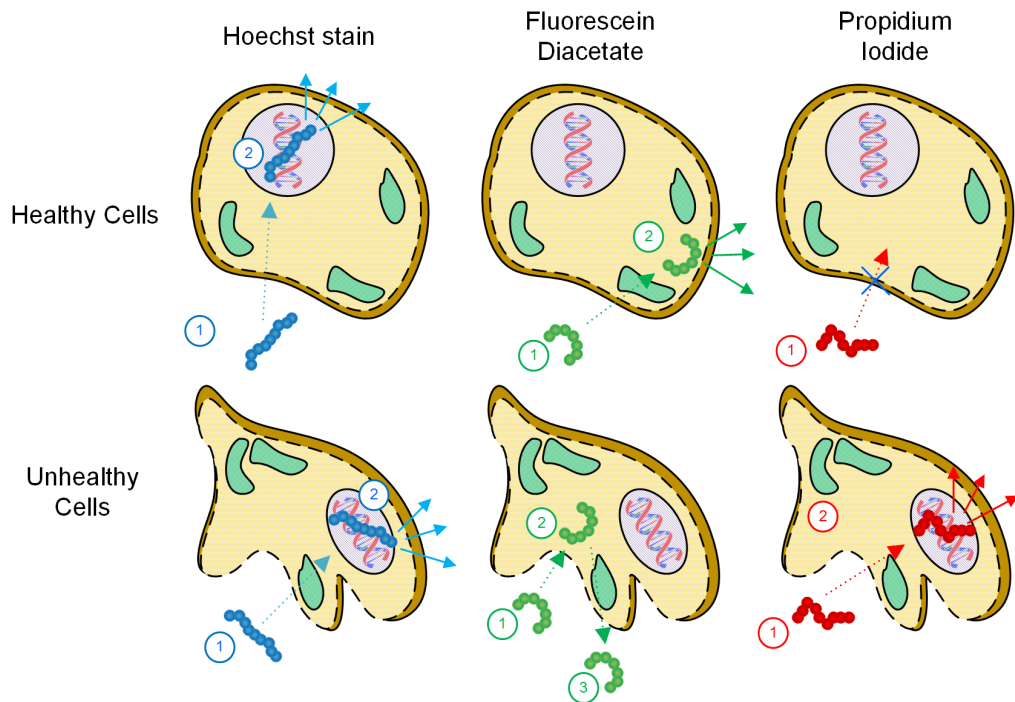


Fig. S1 Schematic illustrating the interaction of Hoechst stain, fluorescein diacetate (FDA) and propidium iodide (PI) with healthy and unhealthy cells. Hoechst penetrates the nuclei of healthy and unhealthy cells, providing a visual indicator of general cell adhesion (whether healthy or not). FDA exhibits fluorescence only when present in healthy cells, while PI is only able to penetrate the membranes of pyknotic cells. Healthy cells exhibit an FDA signal but no PI signal; pyknotic cells exhibit only a PI signal; while esterase-inactive cells exhibit neither a PI signal nor an FDA signal.