

## **Supplementary information**

### **Proteolysis inhibition by hibernating bear serum leads to increased protein content in human muscle cells**

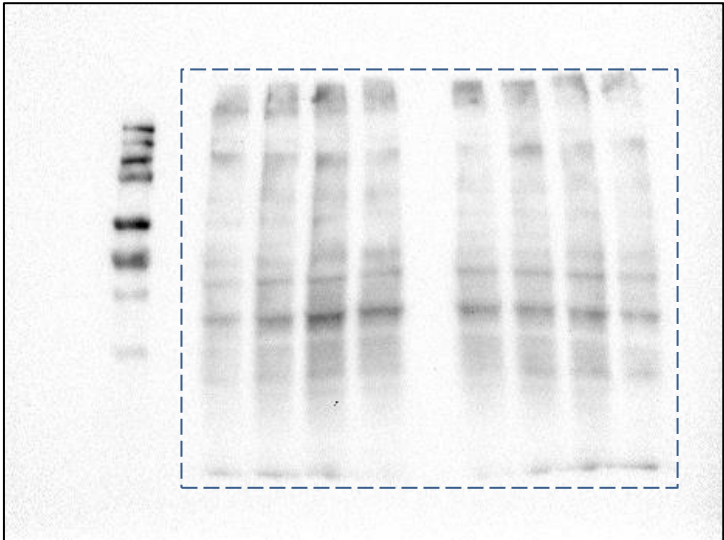
Stéphanie Chanon<sup>1</sup>, Blandine Chazarin<sup>2,3,4</sup>, Benoit Toubhans<sup>1</sup>, Christine Durand<sup>1</sup>, Isabelle Chery<sup>2,5</sup>, Maud Robert<sup>1,6</sup>, Aurélie Vieille-Marchiset<sup>1</sup>, Jon E. Swenson<sup>7,8</sup>, Andreas Zedrosser<sup>9,10</sup>, Alina L. Evans<sup>11</sup>, Sven Brunberg<sup>7</sup>, Jon M. Arnemo<sup>11,12</sup>, Guillemette Gauquelin-Koch<sup>4</sup>, Kenneth B Storey<sup>13</sup>, Chantal Simon<sup>1</sup>, Stéphane Blanc<sup>2,5</sup>, Fabrice Bertile<sup>2,3</sup>, Etienne Lefai\*<sup>1</sup>

Please find below the original images of all western blot and gel staining included in our article.

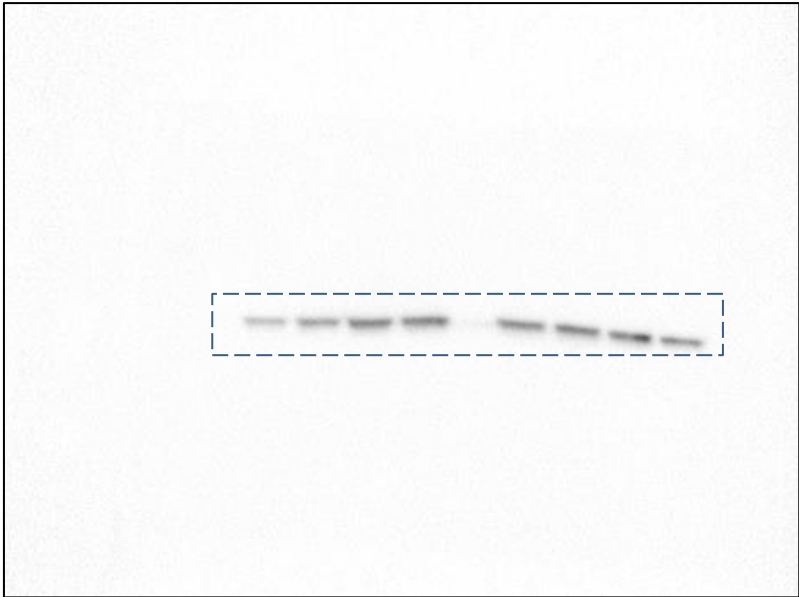
All image came from Chemidoc Biorad device, files were directly exported without modifications in tiff format. For figure 4, acquisition of the chemiluminescence of two different membranes was performed at the same time. Selection (dashed lines) indicate the part of the image that has been used to built the figures.

**Figure 2**

IB: anti puromycin

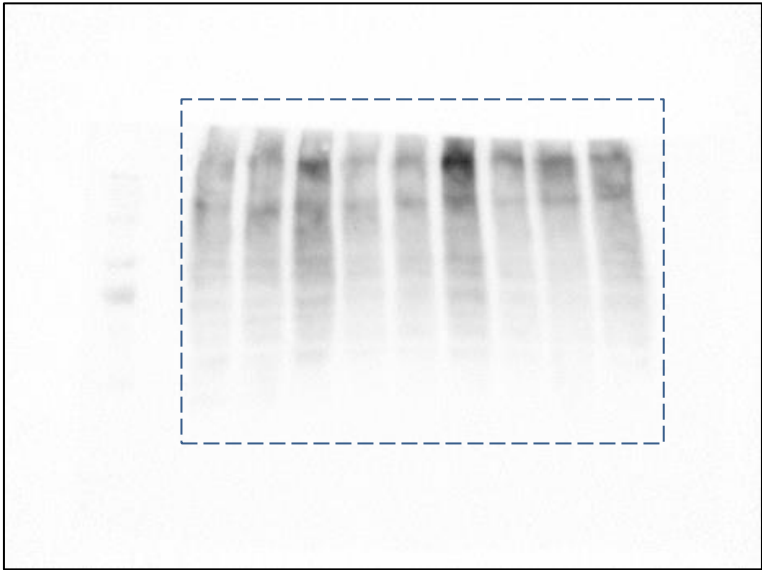


IB: tubulin

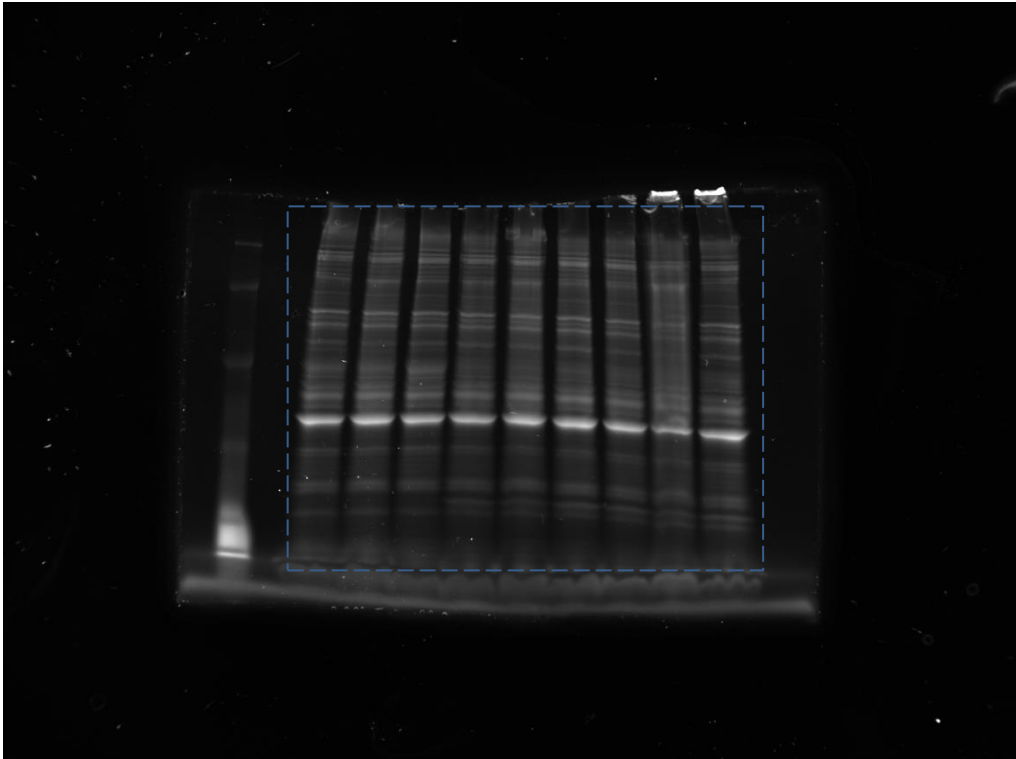


**Figure 3**

IB: anti ubiquitin

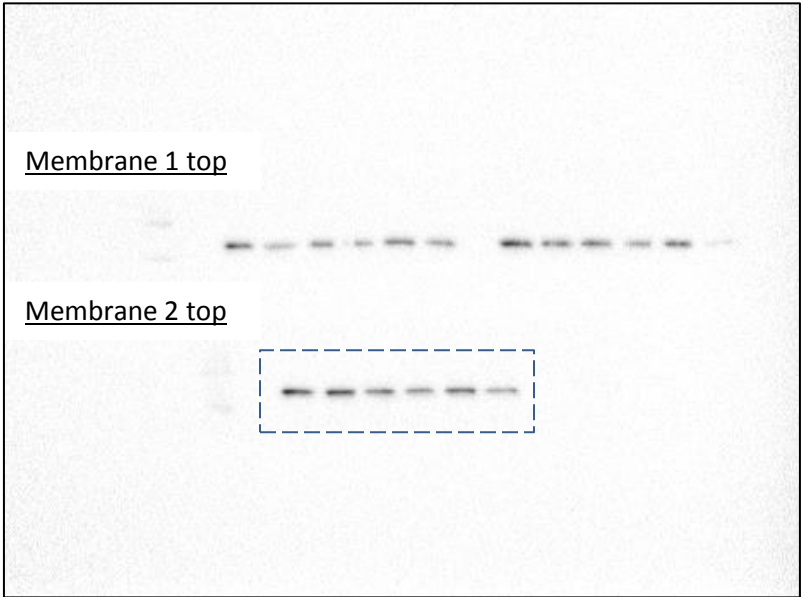


TGX staining

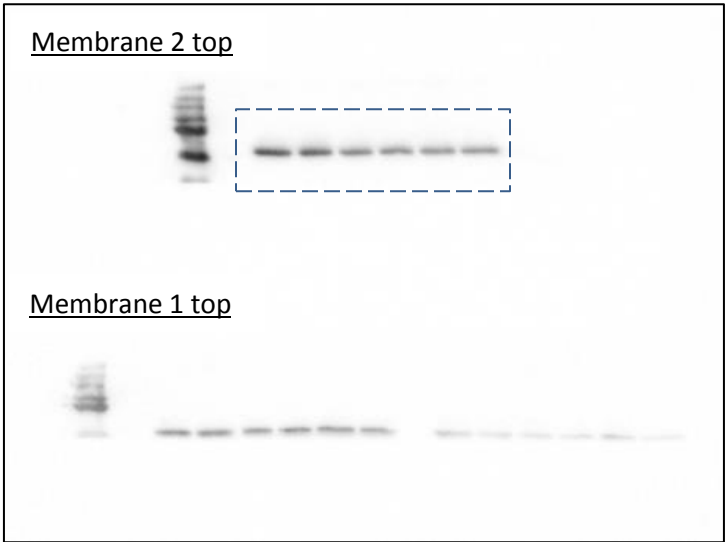


**Figure 4**

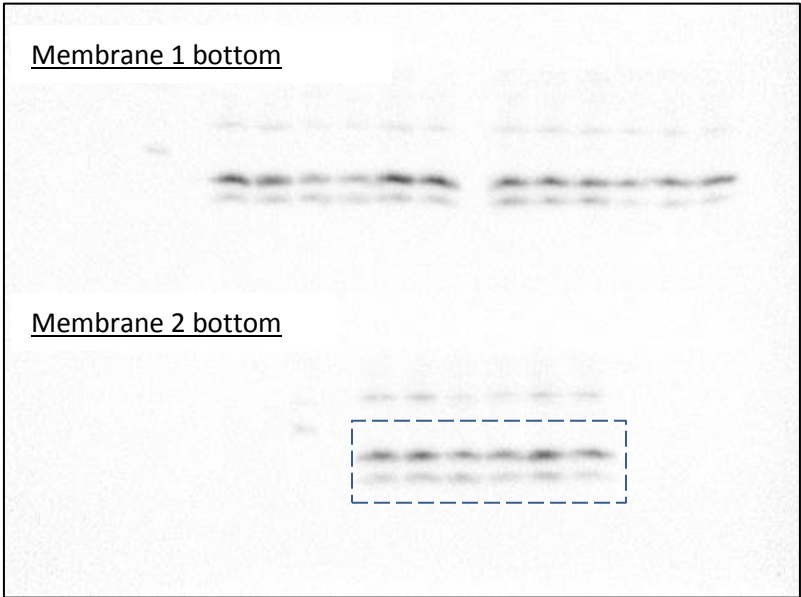
SQSTM1



Tubulin

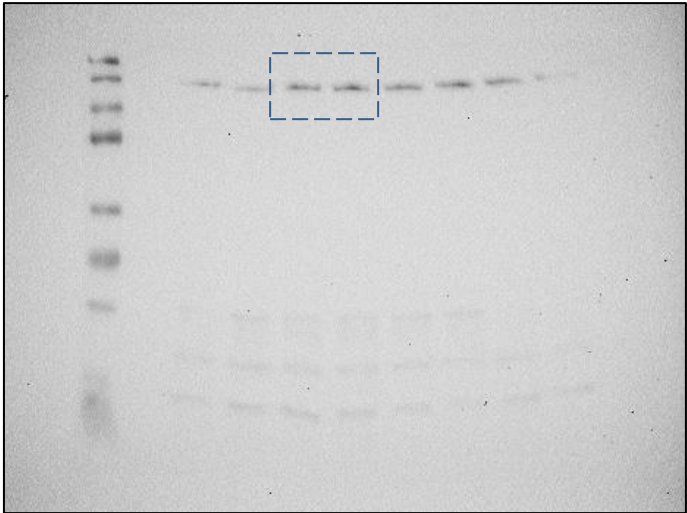


LC3bl et LC3blI

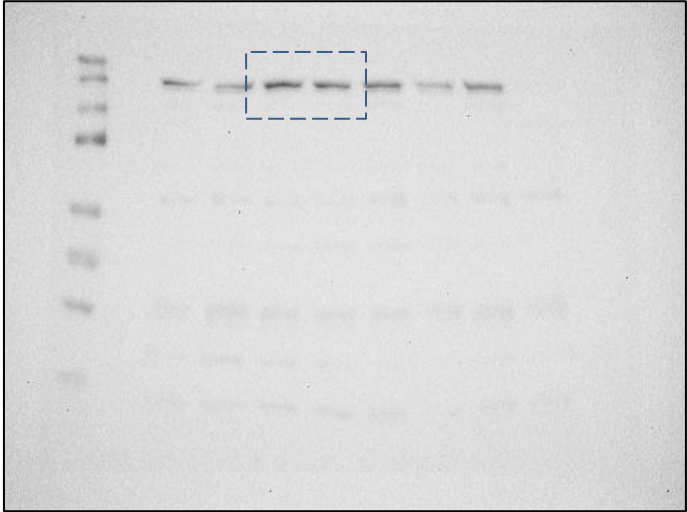


**Figure 5**

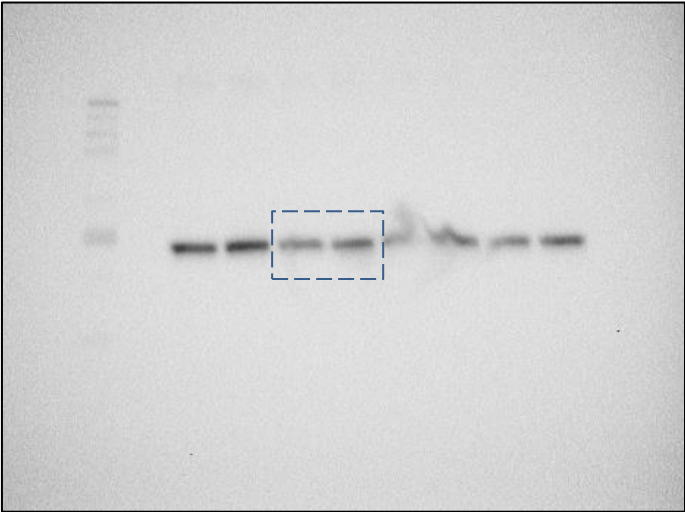
P-mTOR



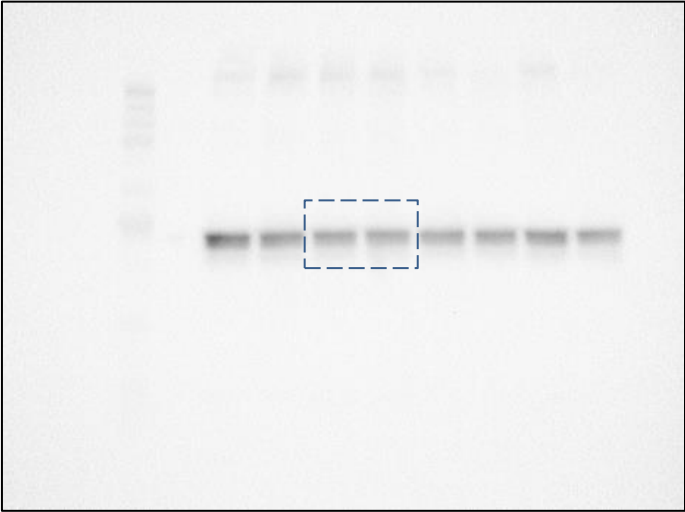
mTOR



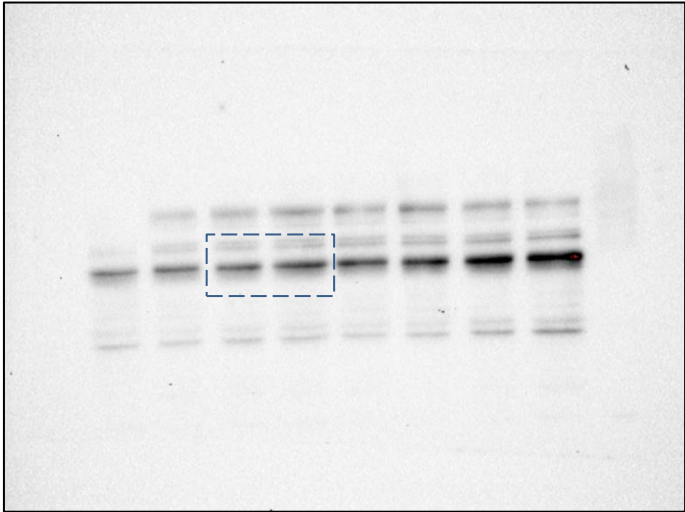
P-PKB



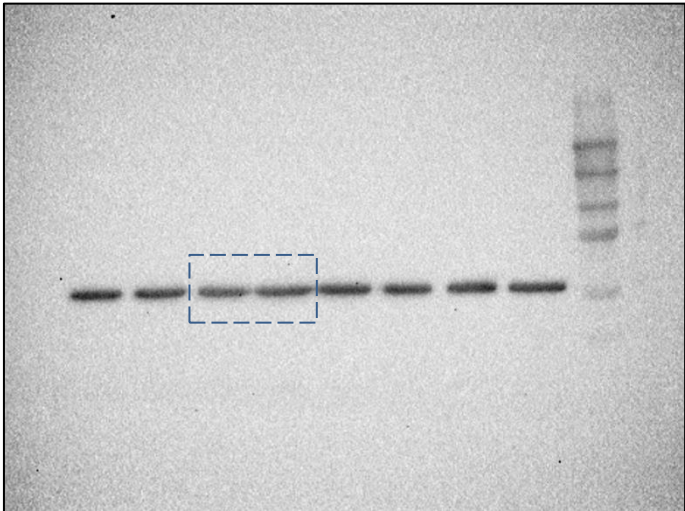
PKB



P-FOXO3

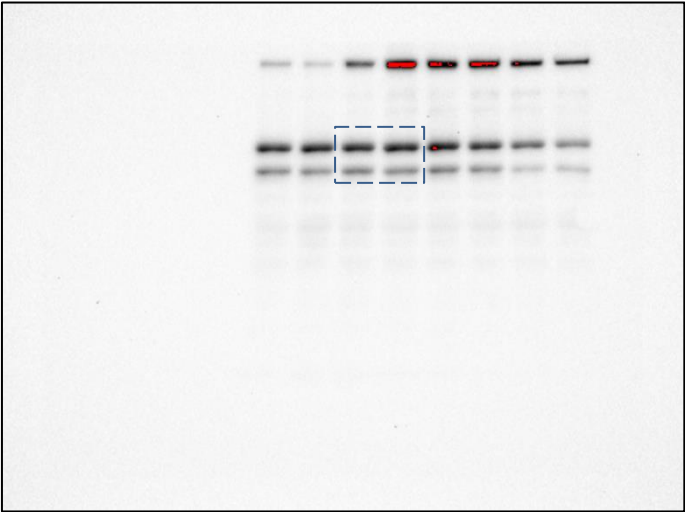


Tubulin

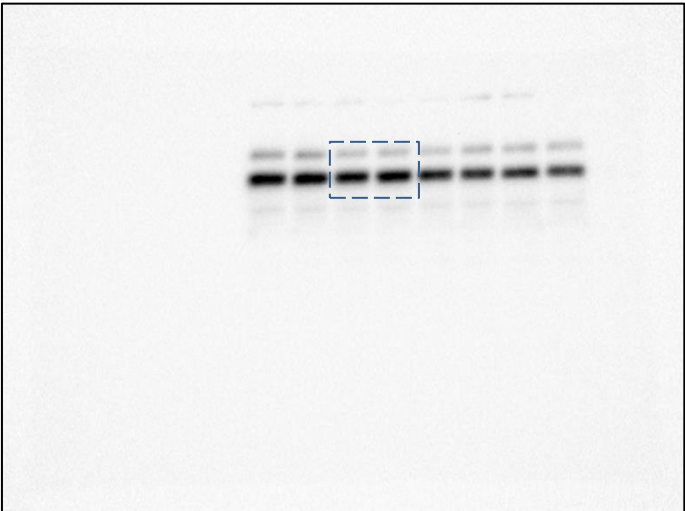




P-S6k



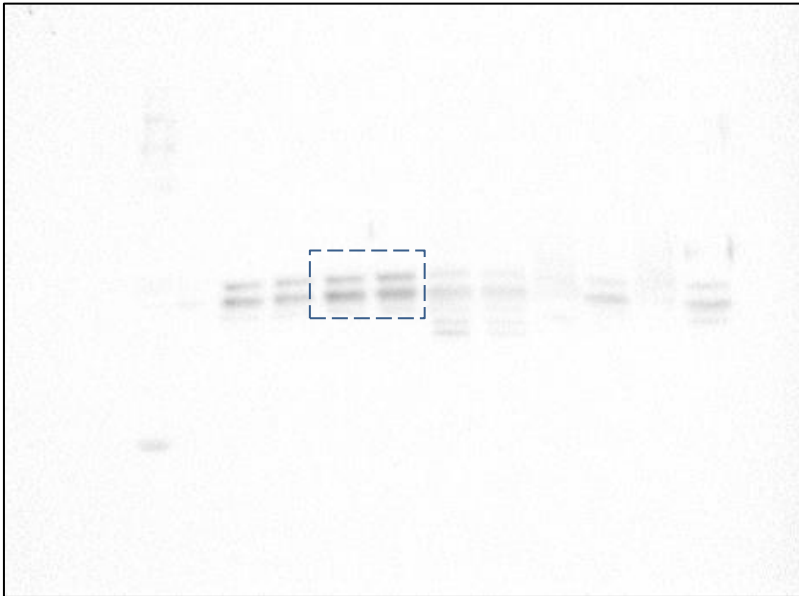
S6k



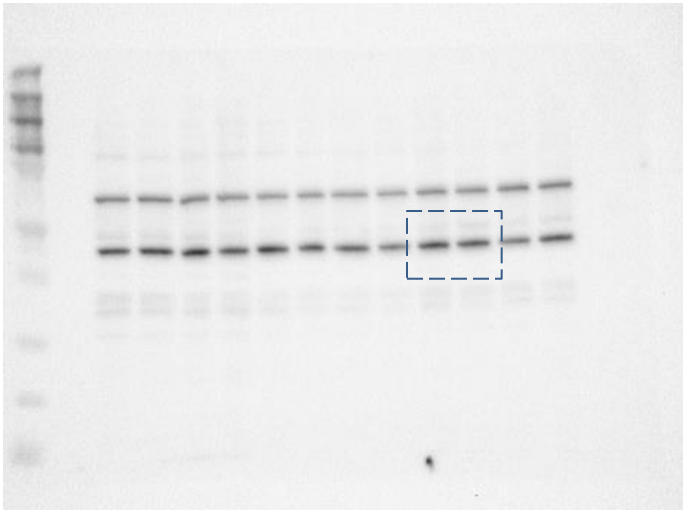
P-GSK3



GSK3



P-SGK



SGK

