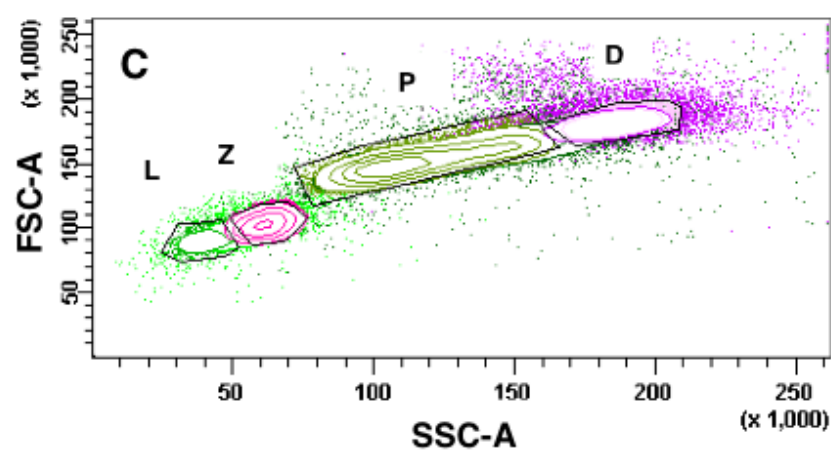
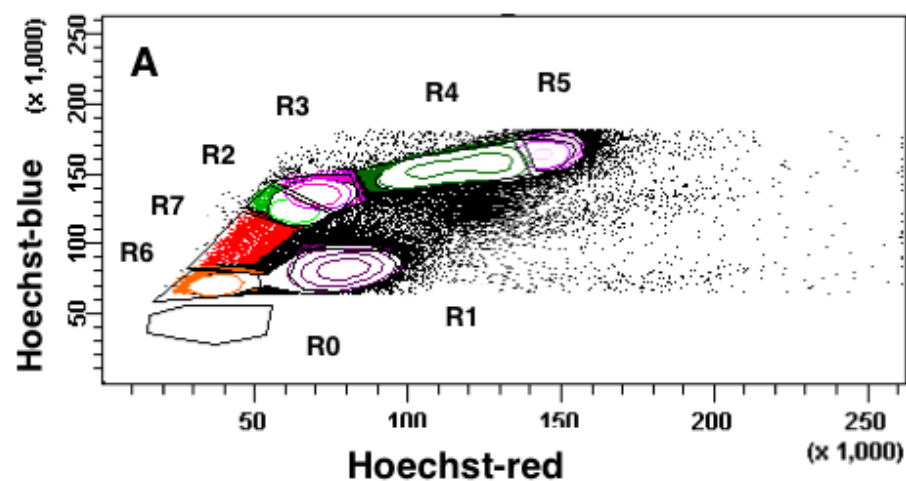


Fig. S2



B

Population	#Events	%Parent	%Total
All Events	1,000,000	####	100.0
Cells	500,947	50.1	50.1
Alive	457,428	91.3	45.7
DNA	407,699	89.1	40.8
R0	312,057	76.5	31.2
R1	21,765	5.3	2.2
R2	4,554	1.1	0.5
L	1,303	28.6	0.1
R3	6,939	1.7	0.7
Z	3,967	57.2	0.4
R4	17,687	4.3	1.8
P	13,620	77.0	1.4
R5	5,344	1.3	0.5
D	2,607	48.8	0.3
R6	4,536	1.1	0.5
Spg	1,707	37.6	0.2
Soma	1,383	30.5	0.1
R7	2,057	0.5	0.2

