

## Supplemental materials

### Notch1 regulates tongue cancer cells proliferation, apoptosis and invasion

Rui-huan Gan<sup>1\*</sup>, Hua Wei<sup>2\*</sup>, Jing Xie<sup>1\*</sup>, Dan-ping Zheng<sup>1</sup>, Er-ling Luo<sup>1</sup>, Xiao-yu Huang<sup>1</sup>, Jian Xie<sup>1</sup>, Yong Zhao<sup>3</sup>, Lin-can Ding<sup>1</sup>, Bo-hua Su<sup>1</sup>, Li-song Lin<sup>4</sup>, Da-li Zheng<sup>5</sup>, You-guang Lu<sup>1</sup>

#### Tables:

Table S1. The siRNA sequences

Name	Sequences
NC	5'-UUCUCCGAACGUGU CACGUTT-3'
	5'-ACGUGACACGUUCG GAGAATT-3'
siRNA-1166	5-CCAACCCUGUCA AUGGCAATT-3
	5-UUGCCAUUGACAGGGUUGGTT-3
siRNA-2010	5'-CAGGGAGCAUGUGU AACAU TT-3'
	5'-AUGUUACACAUGCU CCCUGTT-3'

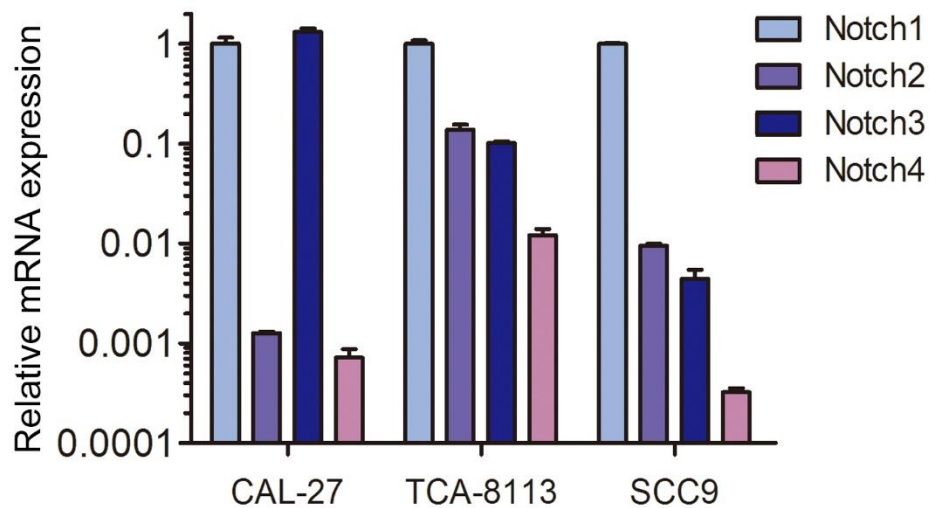
Table S2. Real-time PCR primers

Gene	Forward	Reverse
Notch1	GGAAGTTGAACGAGCATAGTCC	GCATGATGCCTACATTTCAAGA
Notch2	TATGTTCAAGTGCAGGAATTGG	AGAGTCGGGAATTCACCTGTTA
Notch3	CTTCCCTTACCACCGGCCTAG	GCAGTGATCATTCTCAGGCGAC
Notch4	CCTCACAGGCTCCCACTCTG	TGAAGGAGCCAGGAGTGTTGAG
ACTB	GACAGGATGCAGAAGGAGATCA	TTTAGGATGGCAAGGGACTTC

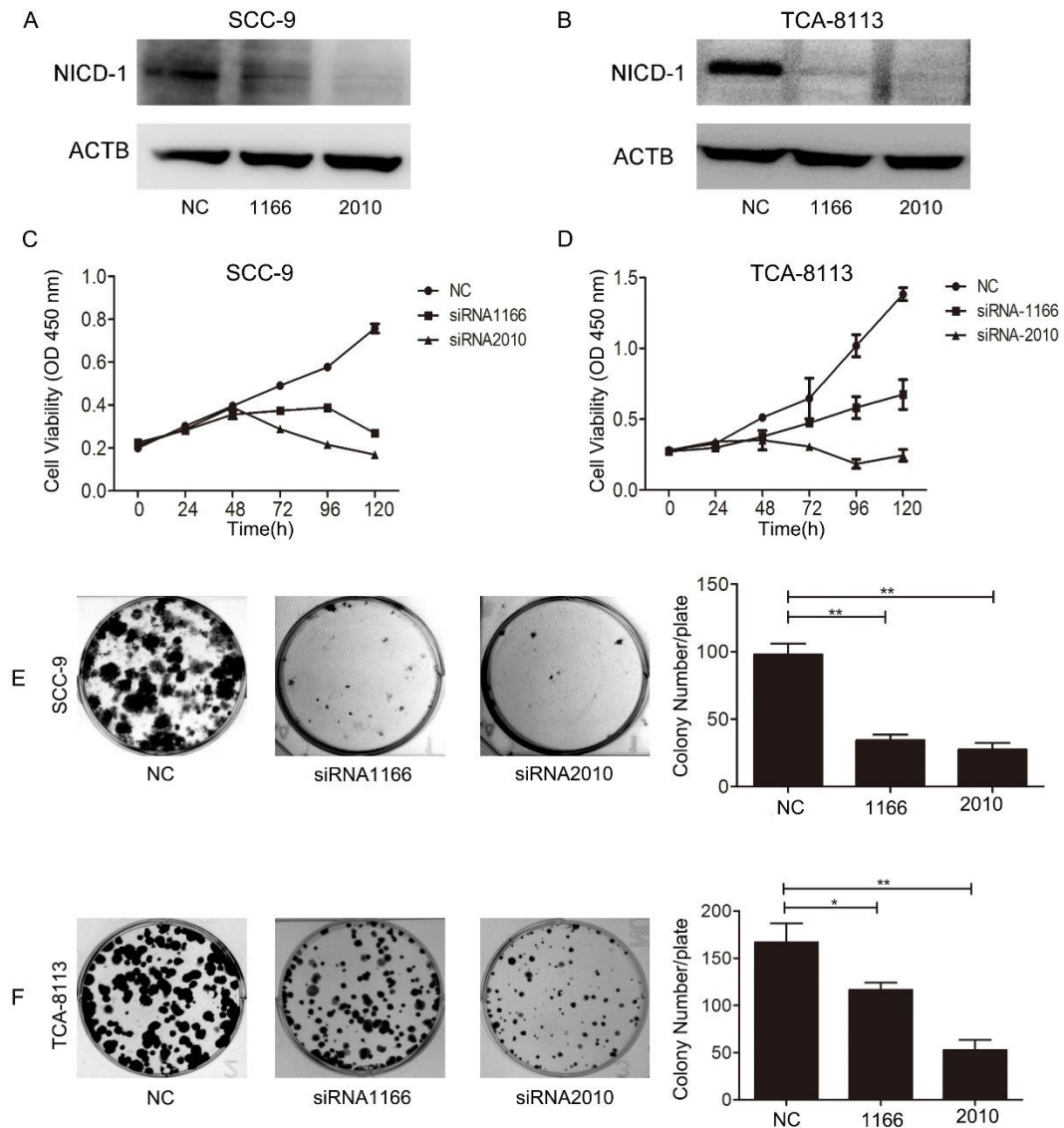
Table S3. Antibody dilution multiple

Antibody	Dilution multiple
Notch1 (Sigma, Germany, Cat. NO. N4788)	1:500
$\beta$ -actin (Sigma, Germany, Cat. NO. A2228)	1:2000
Goat Anti-Rabbit IgG-HRP (Boster, China, Cat.NO. BA1054)	1:2000
Goat Anti-Mouse IgG-HRP (Boster, China, Cat.NO. BA1050)	1:5000

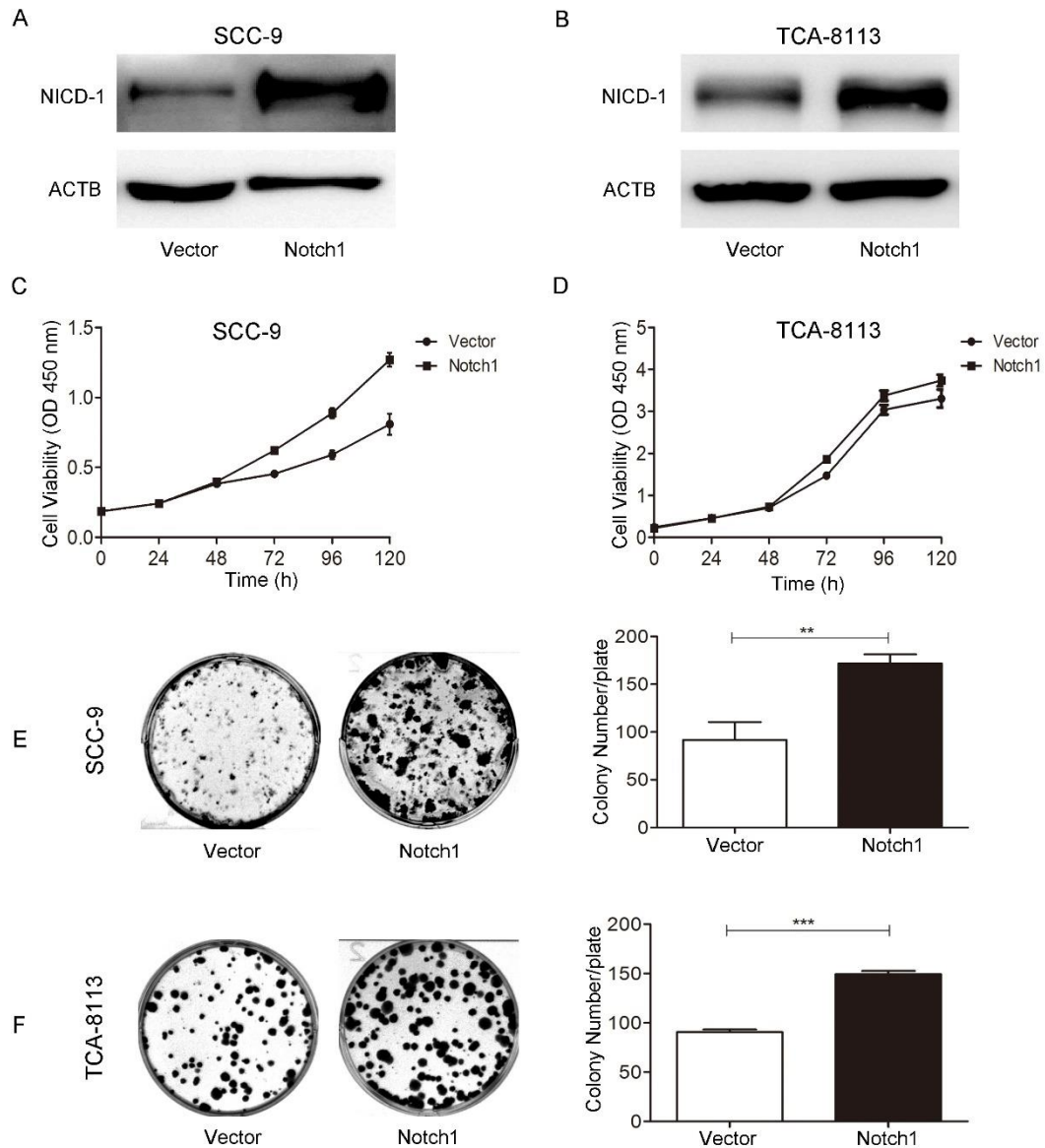
**Figures:**



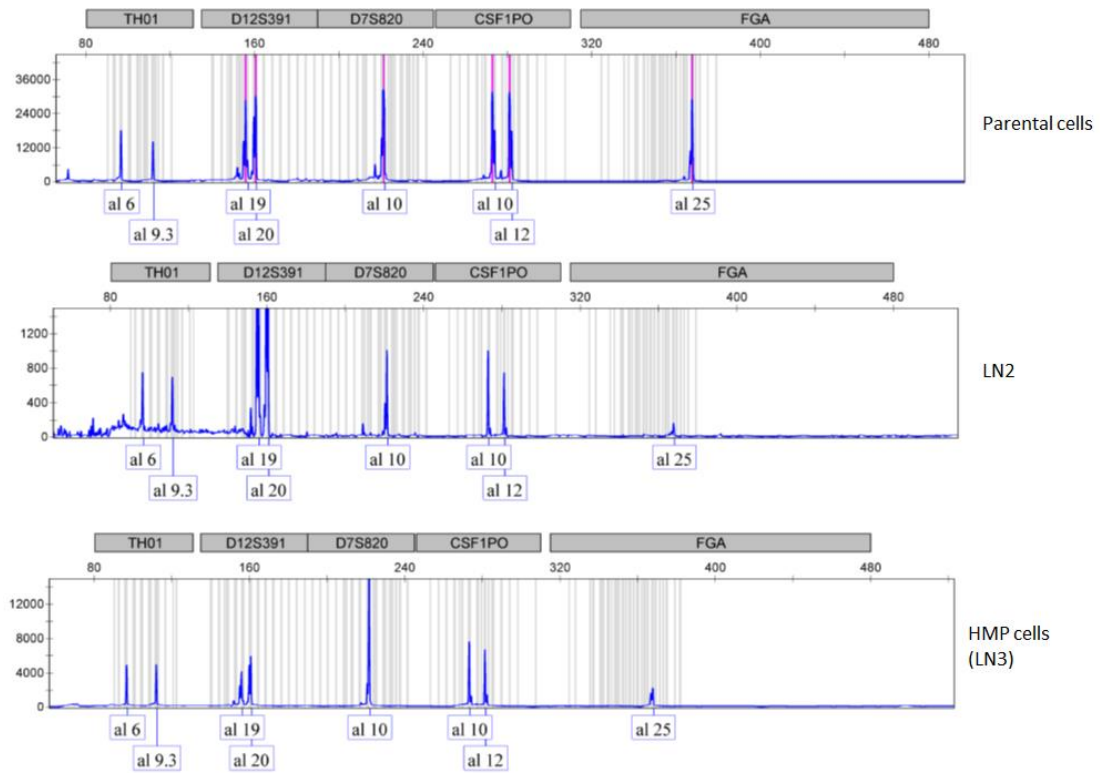
**Figure S1: The expression of Notch receptors in tongue cancer cell lines.** The expression of four Notch receptors were detected by real-time PCR in three different tongue cancer cell lines.



**Figure S2: Knockdown of Notch1 inhibited tongue cancer cells proliferation.** After siRNA transfection in SCC-9 and TCA-8113 cells, the expression of Notch1 was detected by Western blotting (A and B); the cells proliferation ability was measured by CCK8 assay in the same time point (C and D,  $p < 0.01$  from 72 h to 120 h) and colony-formation assay (E and F)



**Figure S3: Overexpression of Notch1 enhanced tongue cancer cells proliferation.** After overexpression of Notch1 in SCC-9 and TCA-8113 cells by plasmid, the expression of Notch1 was detected by Western blotting (A and B); the cells proliferation ability was measured by CCK8 assay in the same time point (C and D,  $p < 0.01$  from 72 h to 120 h) and colony-formation assay (E and F).



**Figure S4: Representative images of STR analysis of CAL-27 and high metastatic potential cells.**