

Supplementary Online Content

Wahbi K, Porcher R, Laforêt P, et al. Development and validation of a new scoring system to predict survival in patients with myotonic dystrophy type 1. *JAMA Neurol*. Published online February 5, 2018. doi:10.1001/jamaneurol.2017.4778

eTable. Primary causes of 241 deaths in the derivation cohort classified according to the *International Statistical Classification of Diseases and Related Health Problems, Tenth Revision*

eFigure 1. Overall survival of the 1066 patients in the derivation cohort

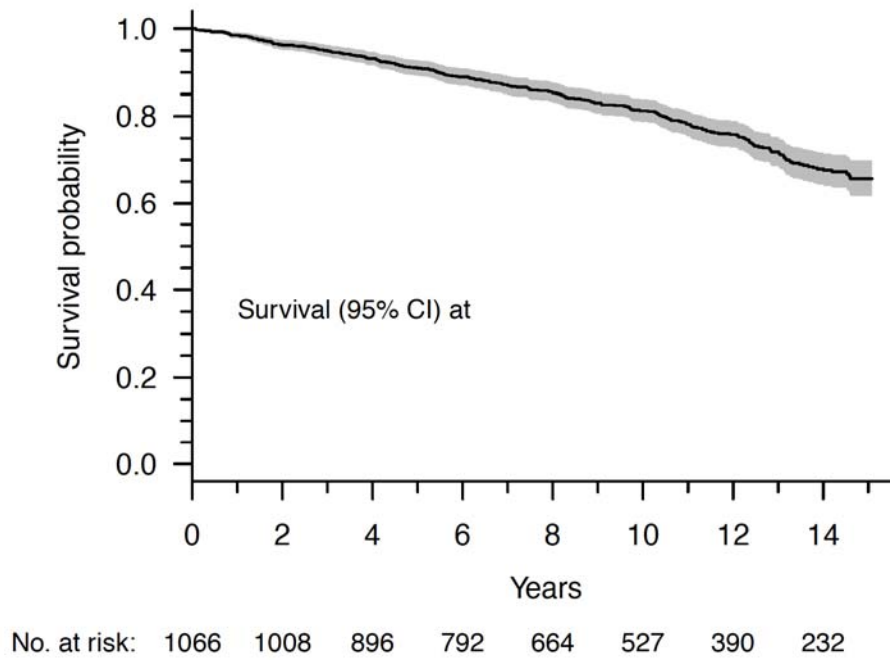
eFigure 2. Calibration curve of 10-year survival

This supplementary material has been provided by the authors to give readers additional information about their work.

eTable. Primary causes of 241 deaths in the derivation cohort classified according to the *International Statistical Classification of Diseases and Related Health Problems, Tenth Revision*

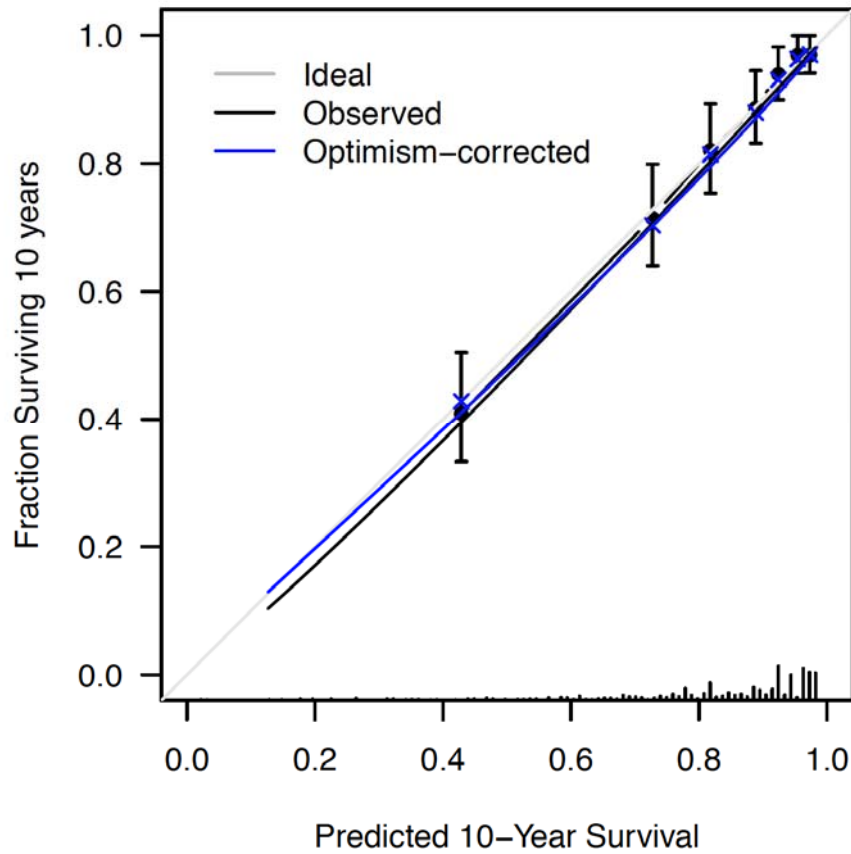
Causes of death	Number	ICD code
Cancer of:	33 (13.6%)	C00-C97
Stomach	4	C16
Colon	2	C18
Rectum	1	C20
Pancreas	2	C25
Larynx	1	C32
Bronchus and lung	5	C34
Skin (melanoma)	1	C43
Breast	1	C50
Uterus	2	C55
Ovary	2	C56
Prostate	1	C61
Brain	2	C71
Thyroid gland	1	C73
Site unspecified	3	C80
Other malignancies		
Follicular lymphoma	1	C82
Multiple myeloma	2	C90.0
Myeloid leukemia	1	C92
Uncertain or unknown behavior of unspecified sites	1	D48
Diseases of the circulatory system	76 (31.4%)	I00-I99
Acute myocardial infarction	4	I21
Cardiac arrest	4	I46
Cerebral infarction	2	I63
Heart failure	13	I50.1
Intracerebral hemorrhage	1	I61
Pulmonary embolism	19	I26
Sudden cardiac death	33	I46.1
Diseases of the respiratory system	80 (18.2%)	J00-J99
Chronic respiratory failure	3	J96.1
Pneumonia	31	J18
Pneumothorax	1	J93
Pulmonary collapse	1	J98.1
Respiratory failure	43	J96
Tracheostomy malfunction	1	J96.0
Diseases of the digestive system	5 (2.0%)	K00-K93
Acute pancreatitis	1	K85
Obstruction of duodenum	2	K31.5
Colostomy and enterostomy malfunction	1	K91.4
Vascular disorders of intestine	1	K55.8
Clinical symptoms or signs and abnormal laboratory tests, not elsewhere classified	26 (10.7%)	R00-R99
Cardiorespiratory failure	1	R09.2
Coma	3	R40.2
Other ill-defined and unspecified causes of death	15	R99
Septic shock	3	R57.2
Unwitnessed death	4	R98
Injury, poisoning and other consequences of external causes	11 (4.5%)	S00-T98
	3	T04
Crush injuries involving multiple body regions	8	S06.9
Intracranial injury		
External causes of morbidity and mortality	10 (4.1%)	V01-Y98
Inhalation and ingestion of food obstructing the respiratory tract	10	W79

eFigure 1. Overall survival of the 1066 patients in the derivation cohort



The grey shaded area indicates the pointwise 95% CI.

eFigure 2. Calibration curve of 10-year survival



The x axis is the model-predicted probability of survival, and the y axis is the observed survival. The grey 45 degrees reference line indicates a perfect calibration. The black data points show the Kaplan-Meier survival for groups of approximately 150 patients, with their 95% CI. The blue crosses show the corresponding optimism-corrected values.