

Supplementary Table 1. Epidemiologic Analysis of the Patients Included the Study

	Study patients (n = 18 362)	EoE (n = 37)
Sex (M:F)	12 583 (68.5):5779 (31.5)	29 (78.4):8 (21.6)
Median age in years (range)	58.1 (50.0-68.0)	44.0 (32.0-53.5)
Pathology result		
Carcinoma	1996 (10.8)	
Barret's esophagus	1367 (7.4)	
Candida esophagitis	1878 (10.2)	
Miscellaneous	13 121 (71.4)	

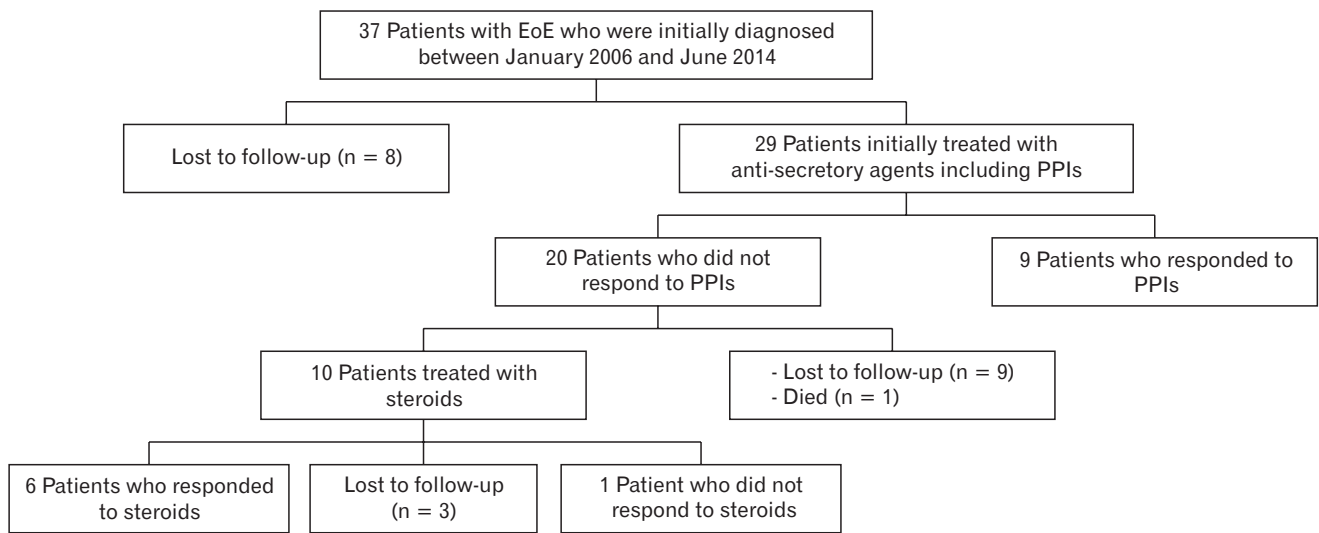
EoE, eosinophilic esophagitis; M, male; F, female.

Data represent numbers of patients (%).

Supplementary Table 2. Prevalence of Eosinophilic Esophagitis and Esophageal Eosinophilia in Korea

Author (publication year)	Study design	Study population	EoE/EE	No. of subjects	Cut-off for eosinophil count	No. of patients with EoE or EE	Prevalence of EoE (%)	Sex (M:F)	Mean age in years (range)
Yu et al, ² 2009	Prospective, single center	Patients with dysphagia and reflux symptom	EoE	108	15/HHPF	2	1.8	2:0	35.5 (28.0-43.0)
Joo et al, ³ 2012	Prospective, single center	Patients with esophageal and UGI symptoms	EoE	122	15/HHPF	8	6.6	5:3	51.1 (25.0-61.0)
Lee et al, ⁴ 2013	Retrospective, multi center	Patients with esophageal biopsy	EoE	-	15/HHPF	9	-	6:3	36.4 (8.0-60.0)
Jung et al, ⁵ 2016	Retrospective, multi center	Patients with esophageal biopsy	EE	-	15/HHPF	6	-	5:1	33.5 (19.0-54.0)
Ahn et al, ⁶ 2016	Retrospective, single center	Patients with esophageal biopsy	EE	4075	15/HHPF	13	0.3	6:9	55.0 ± 20.2

EoE, eosinophilic esophagitis; EE, esophageal eosinophilia; M, male; F, female; UGI, upper gastrointestinal; HHPF, high-power field.



Supplementary Figure. Clinical outcomes of 37 patients with eosinophilic esophagitis. EoE, eosinophilic esophagitis; PPIs, proton pump inhibitors.