

Supplementary Online Content

Cromelin CH, Drews-Botsch C, Russell B, Lambert SR; Infant Aphakia Treatment Study Group. Association of contact lens adherence with visual outcome in the Infant Aphakia Treatment Study: a secondary analysis of a randomized clinical trial. Published February 8, 2018. *JAMA Ophthalmol*. doi:10.1001/jamaophthalmol.2017.6691

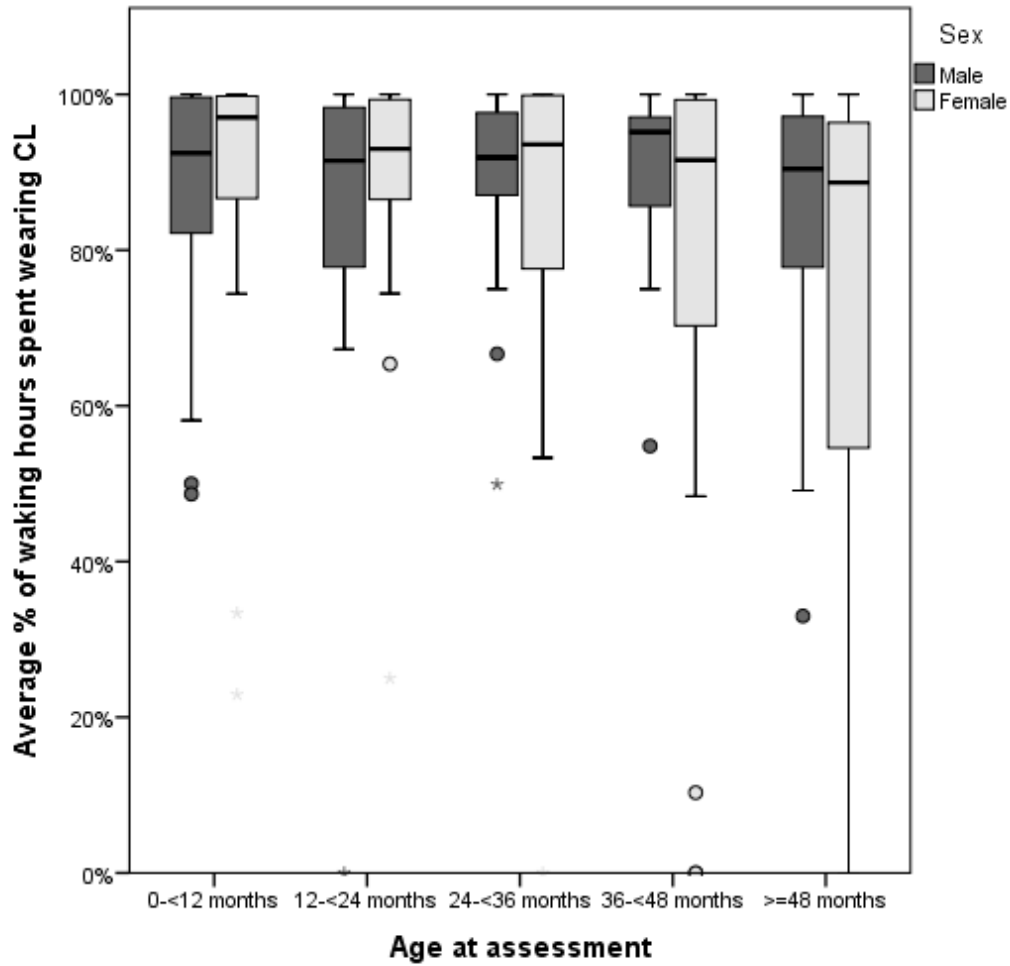
eFigure 1. Reported Percentage of Waking Hours Spent Wearing Contact Lenses from Age 1 to 5 Years vs Sex in the Infant Aphakia Treatment Study

eFigure 2. Reported Percentage of Waking Hours Spent Wearing Contact Lenses From Age 1 to 5 Years as a Function of Private vs Public Health Insurance in the Infant Aphakia Treatment Study

eFigure 3. Reported Percentage of Waking Hours Spent Wearing Contact Lenses From Age 1 to 5 Years vs Age at Cataract Surgery (<49 days vs 49 days or older) in the Infant Aphakia Treatment Study

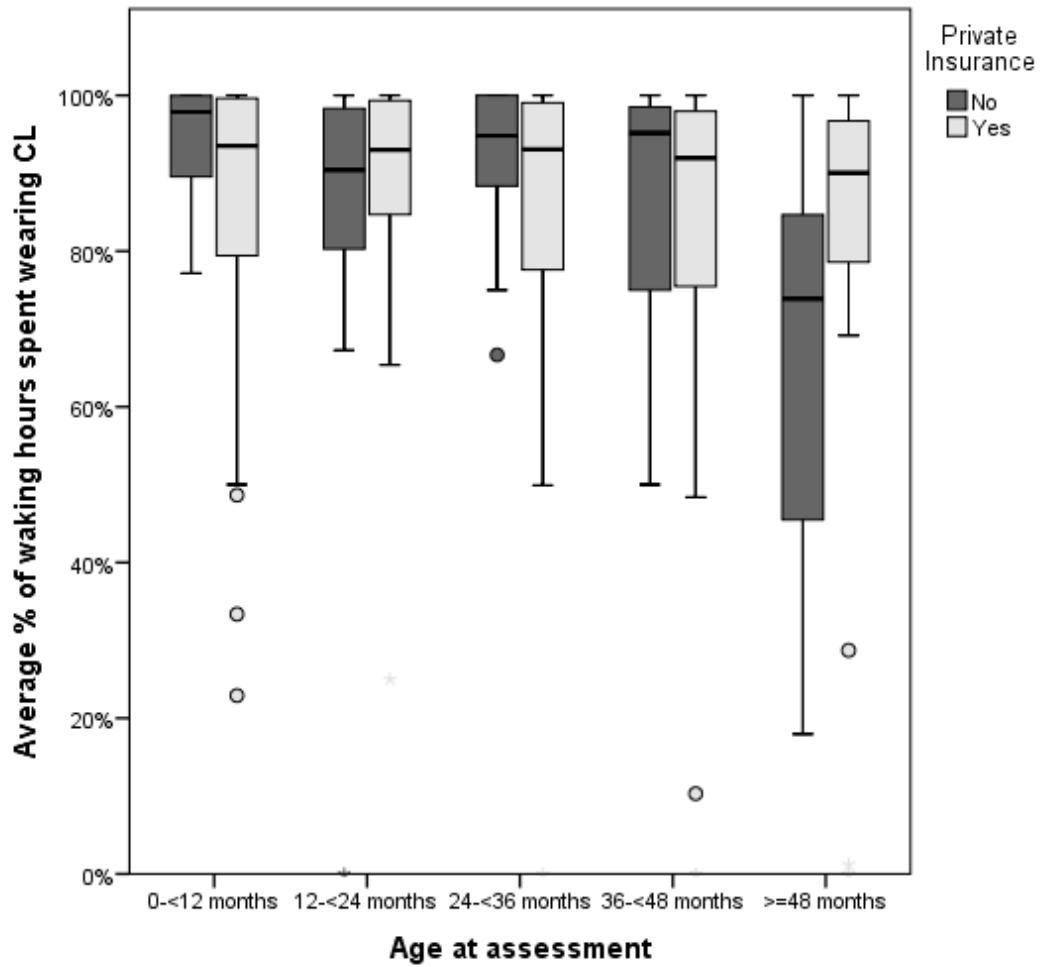
This supplementary material has been provided by the authors to give readers additional information about their work.

eFigure 1. Reported Percentage of Waking Hours Spent Wearing Contact Lenses from Age 1 to 5 Years vs Sex in the Infant Aphakia Treatment Study



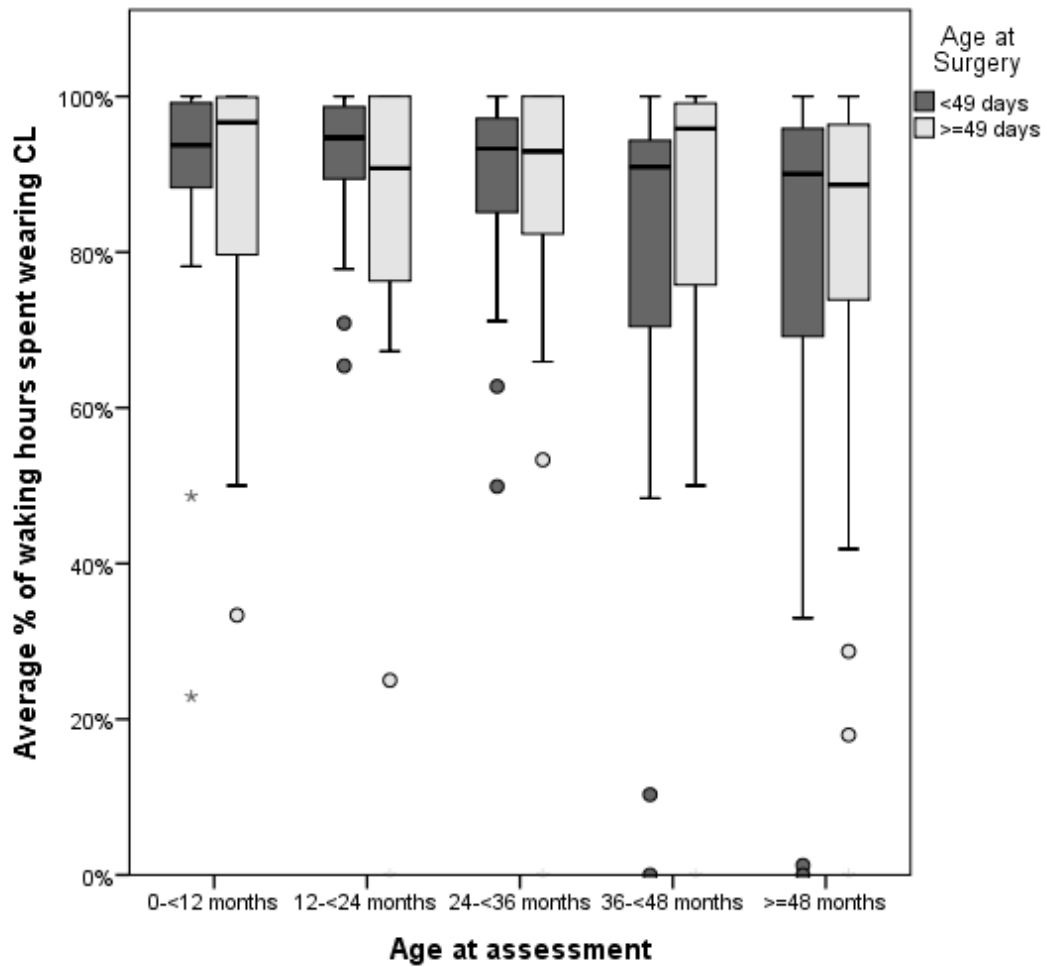
The horizontal line in the middle of the box indicates median; top and bottom borders of the boxes 75th and 25th percentiles; whiskers 2 SD from median; data points shown as circles, outliers and asterisks, extreme outliers.

eFigure 2. Reported Percentage of Waking Hours Spent Wearing Contact Lenses From Age 1 to 5 Years as a Function of Private vs Public Health Insurance in the Infant Aphakia Treatment Study



The horizontal line in the middle of the box indicates median; top and bottom borders of the boxes 75th and 25th percentiles; whiskers 2 SD from median; data points shown as circles, outliers.

eFigure 3. Reported Percentage of Waking Hours Spent Wearing Contact Lenses From Age 1 to 5 Years vs Age at Cataract Surgery (<49 days vs 49 days or older) in the Infant Aphakia Treatment Study



The horizontal line in the middle of the box indicates median; top and bottom borders of the boxes 75th and 25th percentiles; whiskers 2 SD from median; data points shown as circles, outliers and asterisks, extreme outliers.