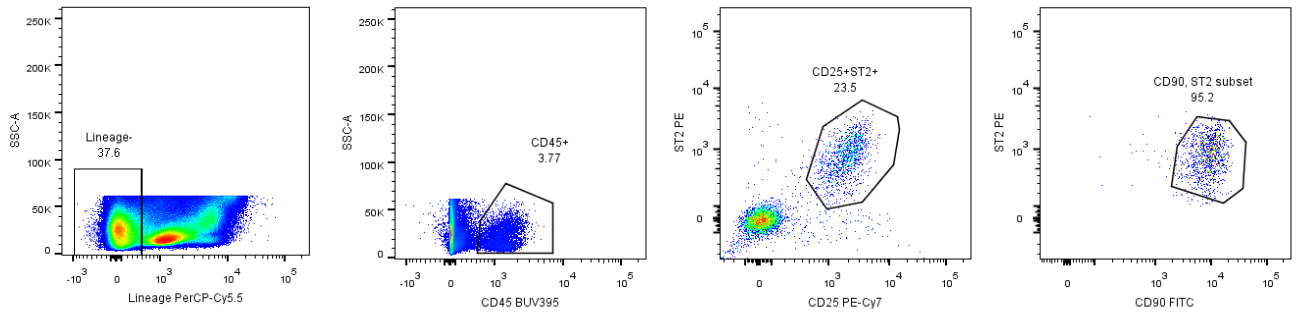


After lymphocyte and single-cell gating:



Supplementary Figure 1: Gating strategy for ILC2 cells

For bone marrow ILC2 sorting, cells were stained for lineage markers (CD3 ϵ , CD5, CD11b, CD11c, CD19, NK1.1, TCR $\gamma\delta$, B220) and further stained for CD45, CD25, CD127, and **ST-2**. After lymphocyte and singlet gates, ILC2 cells were sorted as Lin⁻ CD45⁺ CD25⁺ CD127⁺ **ST-2**⁺ cells. For lung ILC2 cells, CD90.2 was used as an additional positive marker.