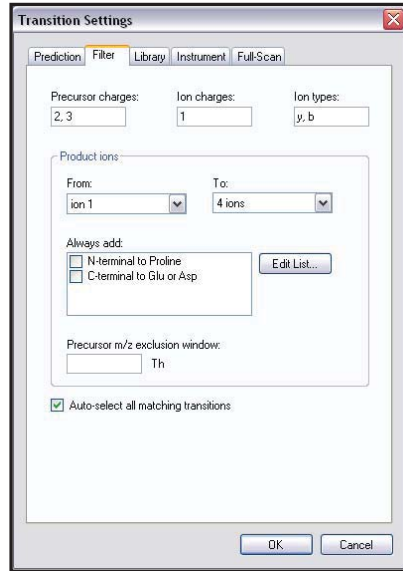
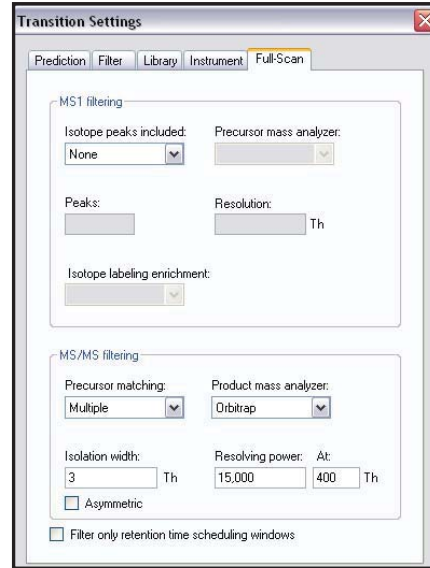


**Additional file 4**

**MS/MS Filtering - transition setting tabs in Skyline software**

**a****b**

**a.** Skyline MS2 filtering Options and Settings used in the study. Filter features are given by the selected charge states of the precursor (++ , +++), the type of fragment product y ion and the number of fragment product ions you want to screen (the first most intense ion to the fourth).

**b.** Skyline Full-Scan option, the MS/MS settings that control chromatogram extraction from MS/MS scans of multiple precursor matching read out by the orbitrap with an isolation width of 3 m/z and a fixed resolution of 15,000 at 400 m/z.

**c.** Peptide AVPPNNSNAAEDDLPTVELQGLVPR +++ and the fourth intense extracted fragment product y-ions at m/z 1208.6997, 911.5309, 541.3457 and 272.1717 are displayed for three triplicate injections

**C**