

Additional file 6

Coefficients of Variation (CVs) of the ratios light/heavy

CVs of the light/heavy peptides ratios calculated for each points of the calibration curve (Panel A), 120 injections across 40 biological replicates from the biobank 1 (Panel B) and 219 injections across 73 biological replicates from the biobank 2 (Panel C).

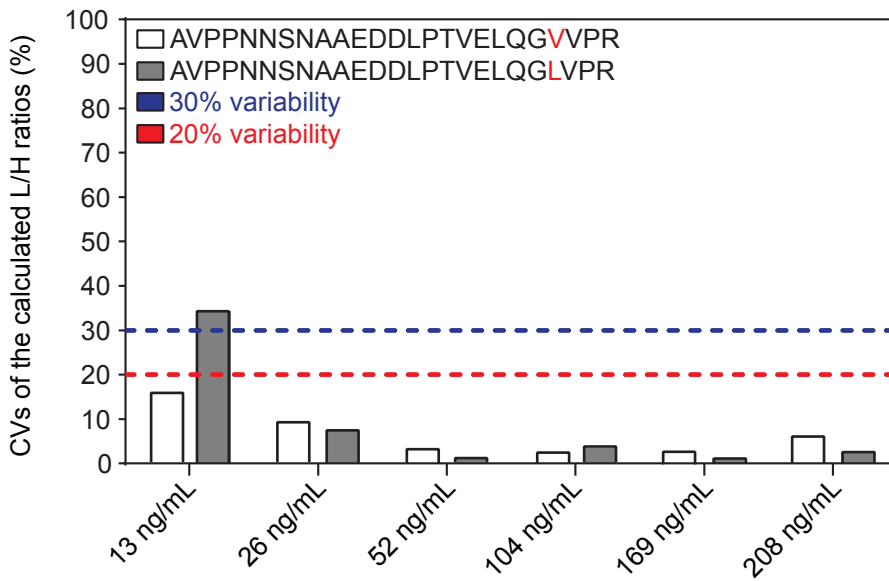
Panel A - CVs of the light/heavy ratios calculated for AVPPNNSNAAEDDLPTVELQGVVPR peptide and AVPPNNSNAAEDDLPTVELQGLVPR peptide used for the establishment of the standard concentration curves in the serum (**a, b**).

Panel B - CVs of the light/heavy ratios calculated for AVPPNNSNAAEDDLPTVELQGVVPR peptide and AVPPNNSNAAEDDLPTVELQGLVPR peptide for individual patients of the biobank 1 (**a, b**). Distribution of the CVs of the light/heavy ratios for the two peptides over 40 biological replicates (**c**).

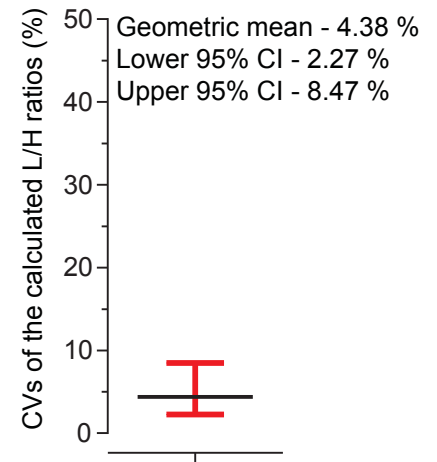
Panel C - CVs of the light/heavy ratios calculated for AVPPNNSNAAEDDLPTVELQGVVPR peptide and AVPPNNSNAAEDDLPTVELQGLVPR peptide for individual patients of the biobank 2 (**a, b**). Distribution of the CVs of the light/heavy ratios for the two peptides over 73 biological replicates (**c**).

Panel A

a

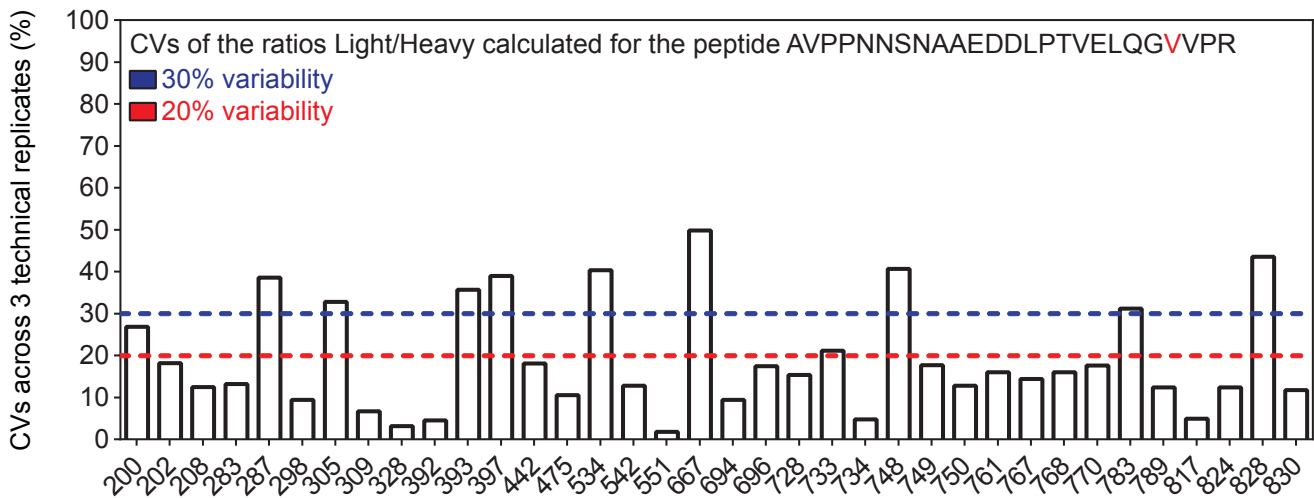


b

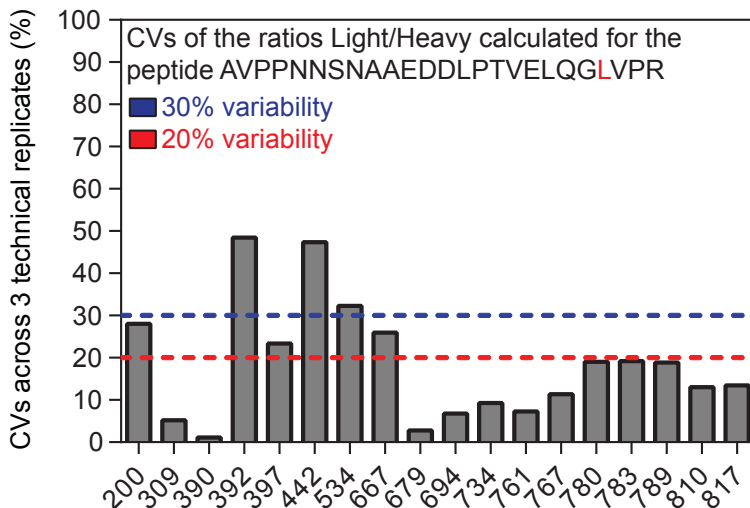


Panel B

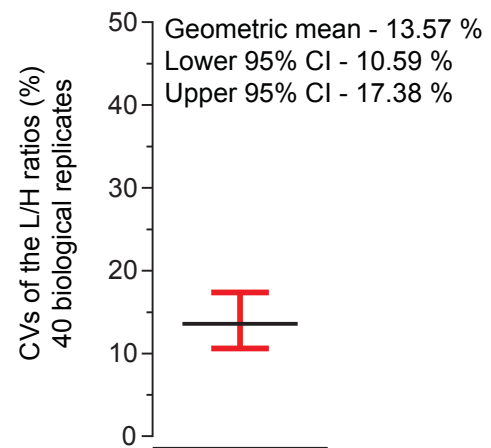
a



b

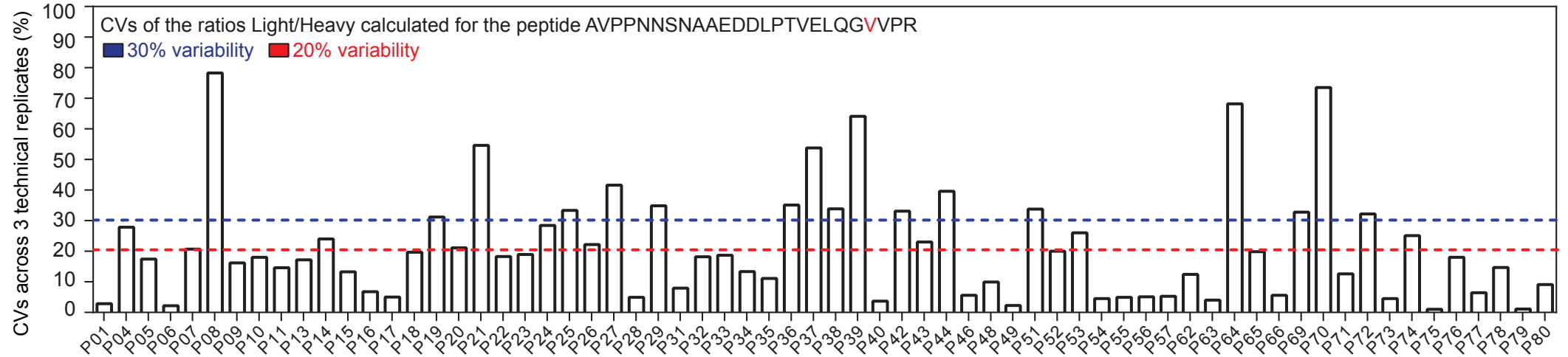


c

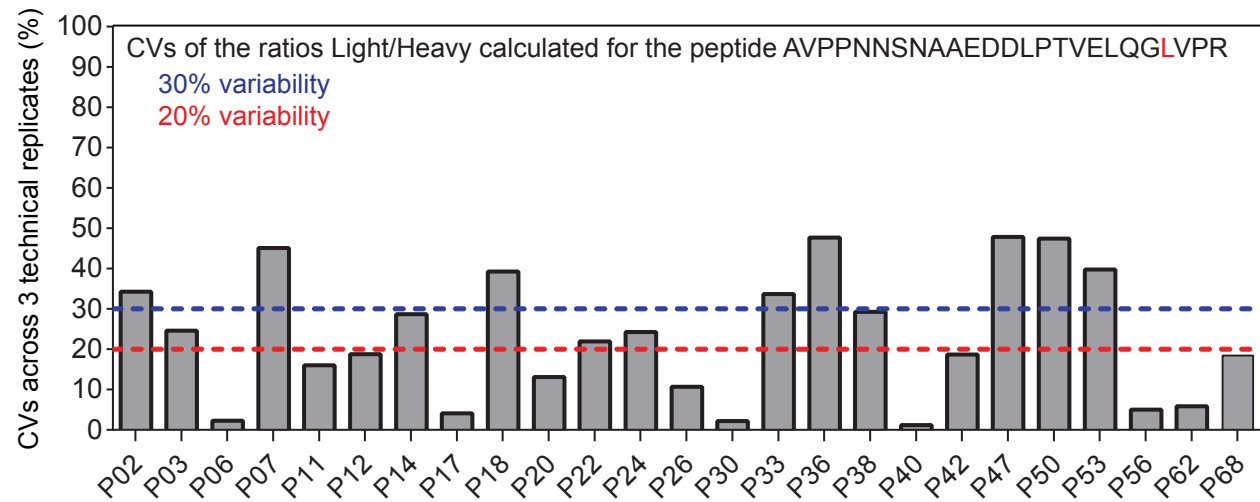


Panel C

a



b



c

