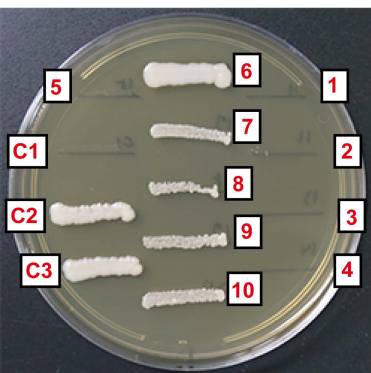


Yeast two-hybrid analysis

SC-Leu-Trp



SC-Leu-Trp-His + 25 mM 3AT



	NLS-GAL4 AD	GAL4 DBD
1	RAD52 (Wt)	-
2	RAD51	-
3	RPA1	-
4	RPA2	-
5	RPA3	-
6	RAD52 (Wt)	RAD52 (Wt)
7	RAD51	RAD52 (Wt)
8	RPA1	RAD52 (Wt)
9	RPA2	RAD52 (Wt)
10	RPA3	RAD52 (Wt)
C1	RalGDS-m2	Krev1
C2	RalGDS-m1	Krev1
C3	RalGDS-wt	Krev1

negative control

positive control

positive control

S12 Fig