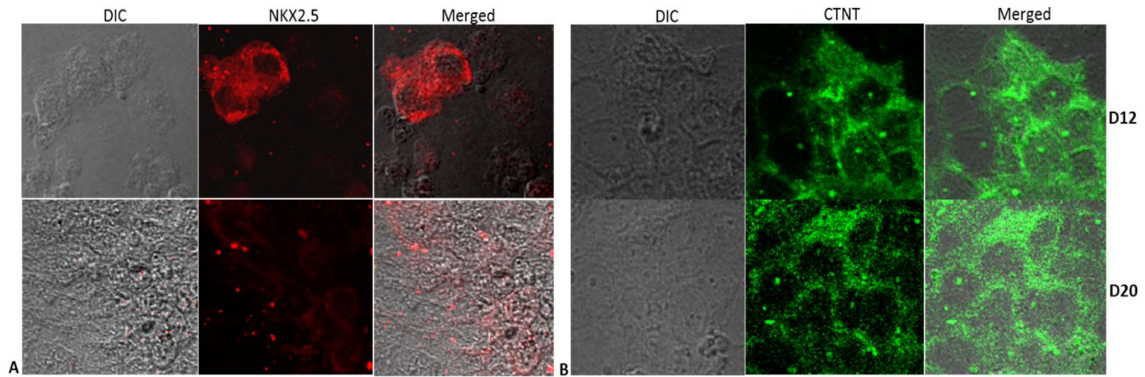


### **Additional File 3**



#### **Characterization of cardiac differentiation of HES3 cells by immuno-fluorescence studies.**

Expression of NKX2.5 (A) and CTNT (B) on days 12 and 20 observed by immuno fluorescence. (A) Distinct nuclear expression of NKX2.5 is observed and (B) CTNT show cell surface expression. Similar changes were observed when KIND1 cells were differentiated into cardiac cells as described earlier (Pursani et al, 2017). Counter staining was done using DAPI. Magnifications 20X.