

Supporting Information

Figure S1

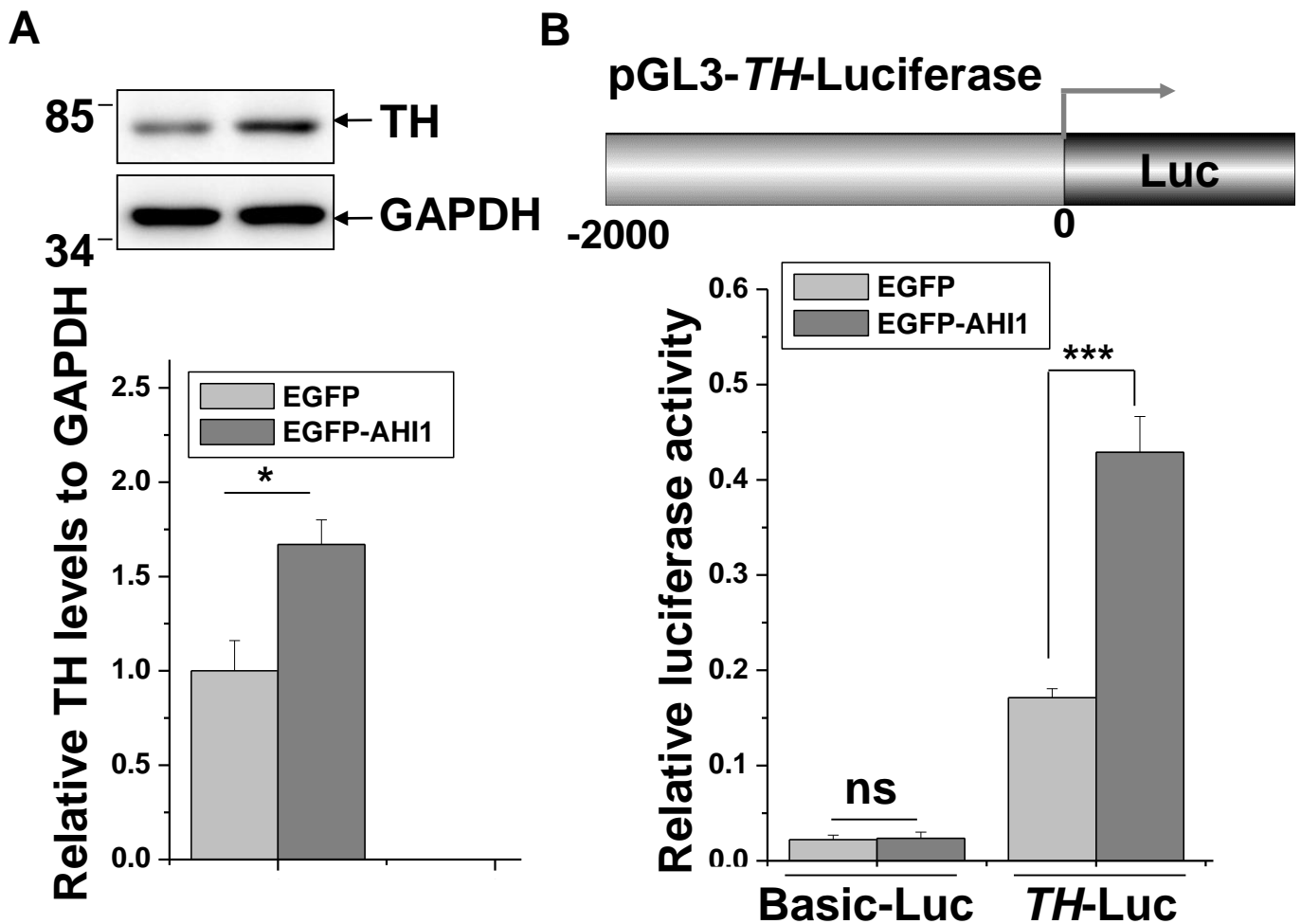


Figure S1. **A**, N2a cells were transfected with EGFP or EGFP-AHI1. Forty-eight hr after transfection, the cell lysates were subjected to immunoblot analysis. The relative intensities of TH to GAPDH shown in lower panel were analyzed. *, $P < 0.05$, $n=3$. **B**, HEK293 cells were transfected with PGL3-Basic-Luc or PGL3-TH-Luc along with EGFP or EGFP-AHI1. Forty-eight hr after transfection, Luciferase reporter assays were performed. ***, $P < 0.001$, ns, no statistical significance, $n=3$.

Figure S2

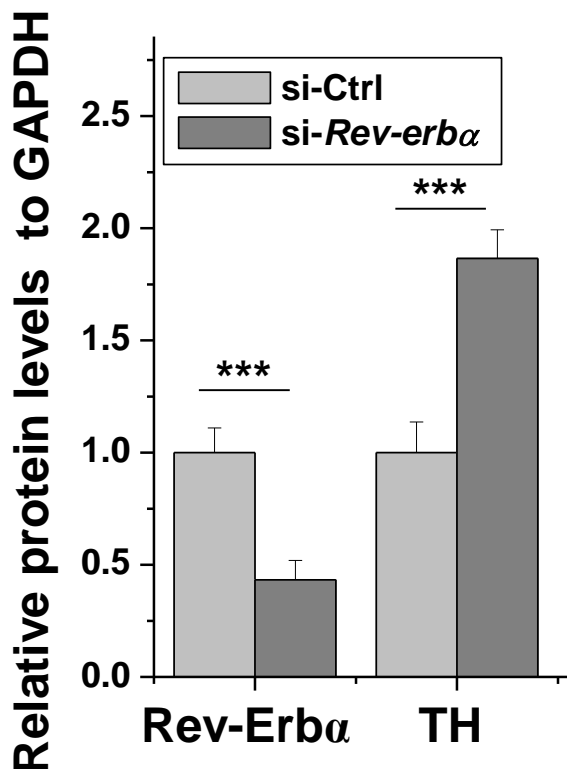
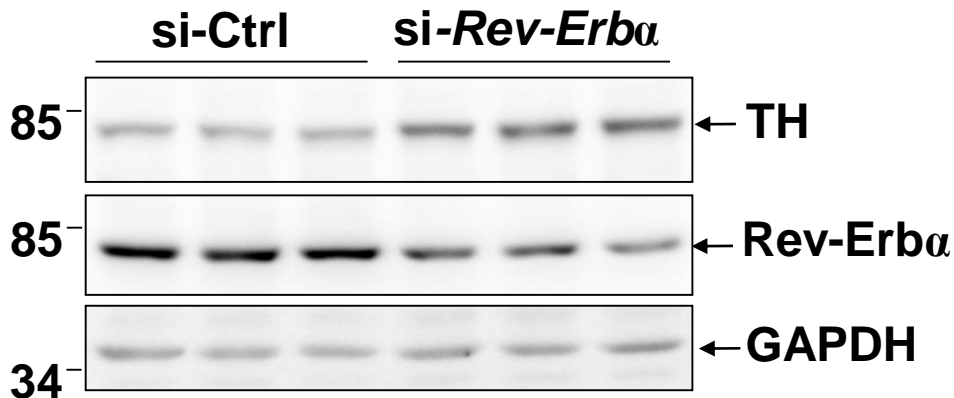


Figure S2. N2a cells were transfected with indicated siRNAs. Seventy-two hr after transfection, the total cell lysates were subjected to immunoblot analysis. The relative levels of Rev-Erb α or TH to GAPDH in (lower panel) were analyzed. ***, $P < 0.001$, $n=3$.

Figure S3

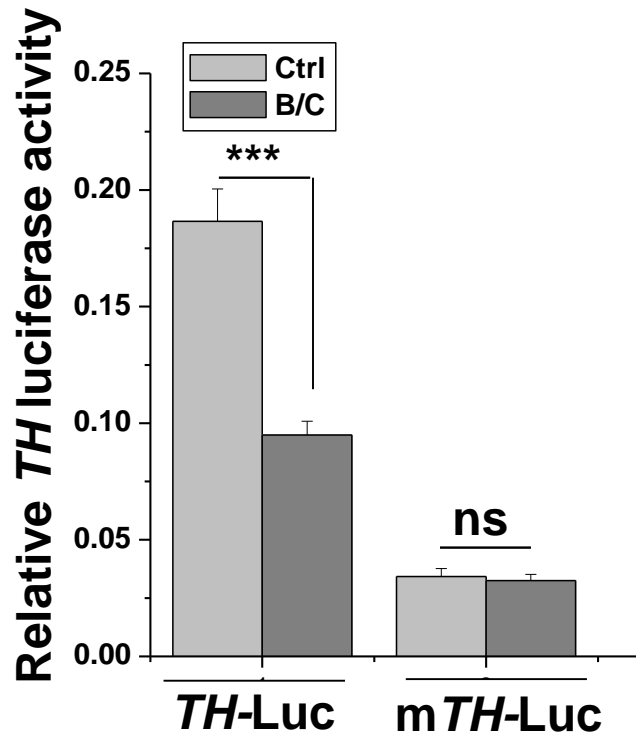


Figure S3. HEK293 cells were transfected with PGL3-*TH*-Luc or PGL3-*mTH*-Luc along with HA or HA-BMAL1/HA-CLOCK (B/C), respectively. Forty-eight hr after transfection, Luciferase reporter assay was performed. ***, $P < 0.001$, ns, no statistical significance, $n=3$.

Figure S4

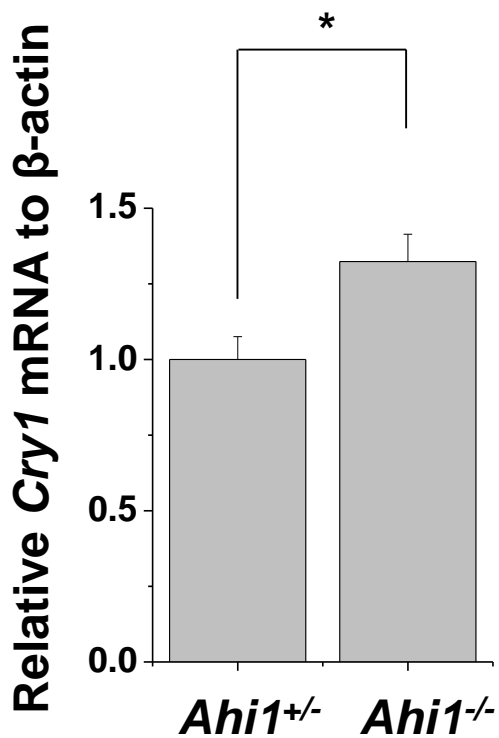
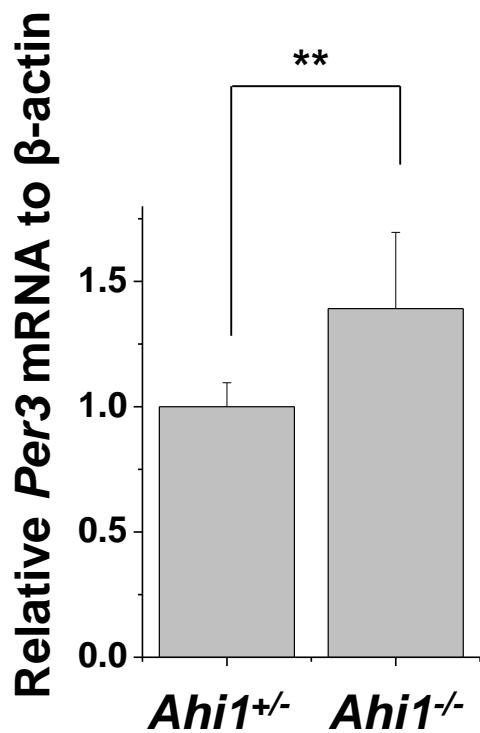
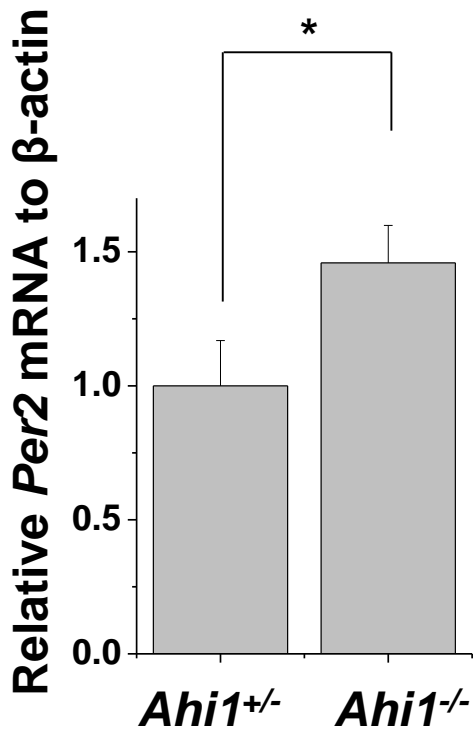
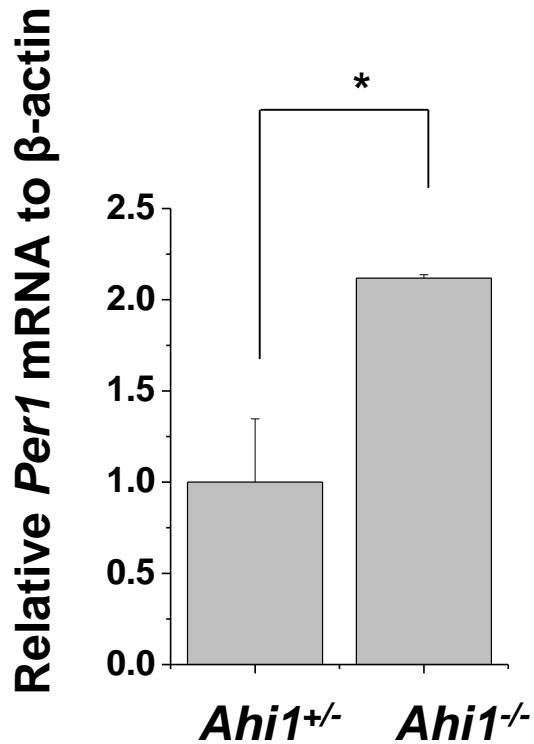


Figure S4 continued

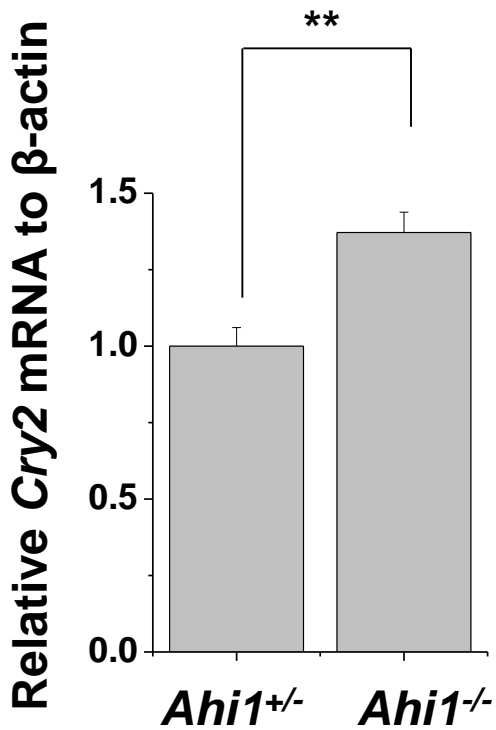


Figure S4. Relative mRNA levels of *Per1*, *Per2*, *Per3*, *Cry1* or *Cry2* of *Ahi1* KO mouse midbrains and littermate controls were examined using qRT-PCR, *, $P < 0.05$, **, $P < 0.01$, $n=5$.