

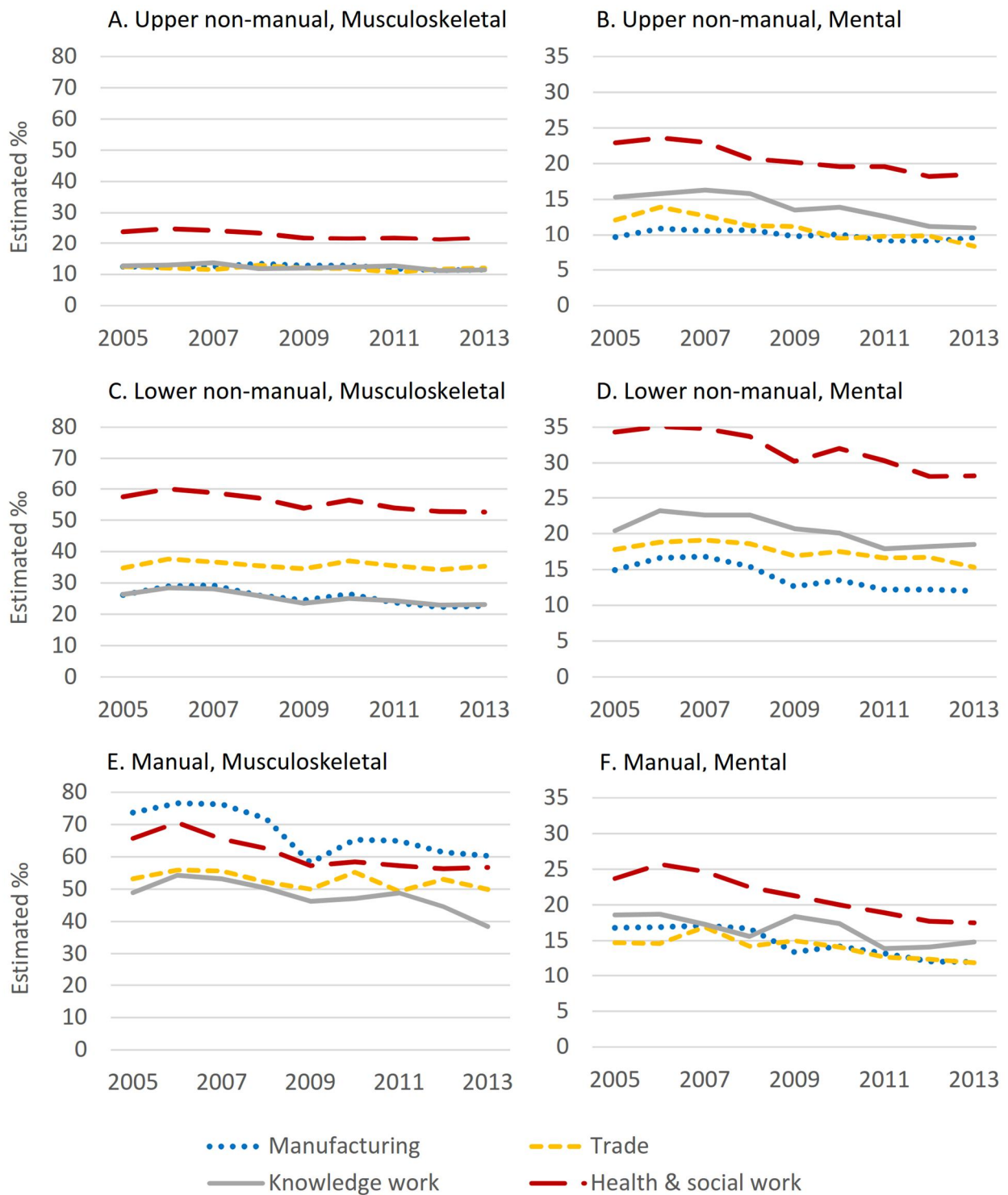
Supplementary Table 1. Annual distribution (%) of the study population over the study period by background characteristics.

	Year								
	2005	2006	2007	2008	2009	2010	2011	2012	2013
Age									
25-29	12.8	12.9	12.9	13.2	13.3	13.2	13.5	13.4	13.1
30-34	12.8	13.0	13.3	13.7	14.2	14.3	14.5	14.4	14.5
35-39	15.0	14.7	14.3	13.8	13.3	13.4	13.5	13.8	14.2
40-44	16.0	16.0	15.9	15.8	15.6	15.3	14.8	14.5	14.0
45-49	15.8	15.8	15.7	15.6	15.7	15.8	15.7	15.7	15.7
50-54	15.1	15.1	15.3	15.2	15.0	15.0	14.9	14.9	15.0
55-59	12.5	12.6	12.7	12.8	12.9	13.1	13.1	13.4	13.5
Gender									
Men	49.3	49.3	49.3	49.2	48.6	47.9	48.2	48.2	47.9
Women	50.7	50.7	50.7	50.8	51.4	52.1	51.9	51.8	52.1
Education									
Higher tertiary	12.7	13.1	13.3	13.7	14.5	15.0	15.4	15.7	16.1
Lower tertiary	29.7	29.8	29.8	29.8	30.0	30.4	30.4	30.4	30.5
Secondary	41.8	42.2	42.7	43.1	42.8	42.8	43.0	43.2	43.2
Primary	15.9	14.9	14.2	13.5	12.7	11.8	11.3	10.8	10.2
Occupational class									
Upper non-manual	24.3	25.2	25.4	25.6	26.4	26.9	25.8	26.0	26.1
Lower non-manual	40.8	40.2	40.2	40.4	40.7	41.3	42.7	42.7	43.1
Manual	34.9	34.6	34.3	34.0	33.0	31.9	31.5	31.4	30.9
Industrial sector									
Manufacturing	20.1	19.6	19.5	19.4	18.8	17.5	17.2	17.0	16.4
Trade	11.2	11.2	11.2	11.2	11.3	11.4	11.4	11.4	11.4
Knowledge work	12.4	12.5	12.5	12.9	13.0	13.1	13.1	13.2	13.2
Health & social work	16.7	16.8	17.0	16.9	17.3	17.8	17.8	18.0	18.5
Other	39.6	39.8	39.8	39.6	39.5	40.2	40.4	40.4	40.5

Employment sector									
Private	62.4	62.6	62.6	63.1	63.1	62.8	62.7	62.9	62.6
Public	32.2	31.8	30.4	29.7	30.2	30.6	30.1	30.3	30.6
Private and public	4.9	5.1	6.5	6.6	6.3	6.1	6.3	6.1	6.2
Transition to self-employment	0.5	0.5	0.6	0.6	0.6	0.6	0.9	0.7	0.6
Income									
Quintile 1 (highest)	17.1	17.7	18.8	19.8	20.2	21.0	21.9	21.8	21.7
Quintile 2	17.9	18.9	19.2	19.5	20.0	20.8	21.3	21.1	21.4
Quintile 3	19.2	19.9	19.7	19.6	19.8	20.5	20.5	20.3	20.5
Quintile 4	22.5	21.9	21.2	20.5	19.9	19.2	18.1	18.4	18.3
Quintile 5 (lowest)	23.3	21.6	21.1	20.6	20.1	18.4	18.3	18.5	18.1
Employed time									
Full year	90.5	90.4	90.6	90.8	90.5	91.5	91.4	91.2	91.3
200-364 days	6.8	7.0	7.1	6.9	6.5	6.1	6.4	6.5	6.3
1-199 days	2.7	2.6	2.4	2.2	3.0	2.4	2.2	2.3	2.4
Employment episodes									
1	90.0	89.5	88.2	88.3	89.2	89.3	88.5	88.9	89.1
2	7.0	7.4	8.5	8.5	7.8	7.7	8.5	8.2	8.0
3+	3.0	3.0	3.4	3.2	3.1	2.9	3.0	2.9	2.9
Total	100.0	100.0	100.0	100.0	100.0	100.0	100.0	100.0	100.0
N	1 097 598	1 100 322	1 109 041	1 122 238	1 117 179	1 081 698	1 094 294	1 092 208	1 080 951

Supplementary Table 2. Distribution (%) of the study population by sociodemographic and employment factors among those employed in different industrial sectors within different occupational classes averaging over the whole study period.

	Upper non-manual					Lower non-manual					Manual				
	Manu- fac- turing	Trade	Know- ledge work	Health & social work	All	Manu- fac- turing	Trade	Know- ledge work	Health & social work	All	Manu- fac- turing	Trade	Know- ledge work	Health & social work	All
Age															
25-29	7.7	9.0	12.9	9.5	10.1	12.4	18.3	15.1	11.1	13.7	13.6	21.3	14.2	7.1	14.8
30-34	15.5	14.6	18.6	12.4	15.0	16.5	16.1	14.5	12.2	13.9	13.6	16.4	10.9	7.7	12.9
35-39	19.2	17.1	16.7	13.6	15.7	15.5	15.2	12.7	13.1	13.7	14.0	14.7	11.1	10.3	13.1
40-44	18.9	18.9	15.4	15.6	16.4	15.4	15.2	14.6	15.2	15.2	14.9	14.4	13.5	1.4	14.7
45-49	15.9	17.1	14.5	17.5	16.0	14.3	13.4	15.3	17.2	15.8	15.2	12.8	16.1	17.6	15.5
50-54	12.7	13.3	12.1	17.4	14.5	13.6	11.5	14.7	17.1	15.0	15.5	11.2	17.6	20.9	15.6
55-59	10.3	10.1	9.7	14.0	12.4	12.2	10.2	13.1	14.1	12.9	13.1	9.3	16.6	22.3	13.5
Gender															
Men	78.5	68.5	65.0	18.2	52.0	56.1	37.6	37.9	7.6	30.3	77.8	79.1	65.0	15.4	69.1
Women	21.5	31.6	35.0	81.8	48.0	43.9	62.4	62.1	92.4	69.7	22.2	20.9	35.0	84.6	30.9
Education															
Higher tertiary	38.2	25.2	42.4	45.0	47.7	10.9	3.0	9.1	1.2	4.7	0.4	0.4	1.6	0.6	0.5
Lower tertiary	46.4	46.7	37.6	48.4	37.0	54.2	32.6	51.2	43.4	44.2	6.5	7.8	11.0	6.7	6.9
Secondary	11.2	21.5	16.7	5.8	12.4	27.0	47.2	31.0	49.9	41.6	70.3	68.7	63.9	69.3	67.9
Primary	4.1	6.7	3.4	0.7	3.0	7.9	17.2	8.7	5.5	9.5	22.9	23.0	23.4	23.3	24.7
Employment sector															
Private	96.2	95.6	81.4	14.0	49.0	97.1	96.1	86.2	17.4	56.9	97.6	95.6	66.3	20.4	80.8
Public	0.1	0.2	12.1	72.3	41.4	0.2	0.2	9.9	73.3	36.7	0.1	1.3	27.4	71.2	14.7
Private and public	3.1	3.1	5.6	12.9	8.8	2.4	3.0	3.4	9.0	6.0	1.9	2.3	5.7	8.2	3.8
Transition to self-employment	0.6	1.1	0.9	0.9	0.8	0.4	0.7	0.5	0.3	0.5	0.4	0.8	0.6	0.2	0.7



Supplementary Figure 1. Age- and gender-adjusted estimated annual proportion of employees with a new onset of sickness absence due to musculoskeletal diseases and mental disorders (%) by industrial sector among A-B) upper non-manual employees, C-D) lower non-manual employees, and E-F) manual workers. The panels are presented in different scales; P-values for the interaction between industrial sector and year: A) 0.302, B) 0.006, C) 0.000, D) 0.005, E) 0.000, F) 0.004.