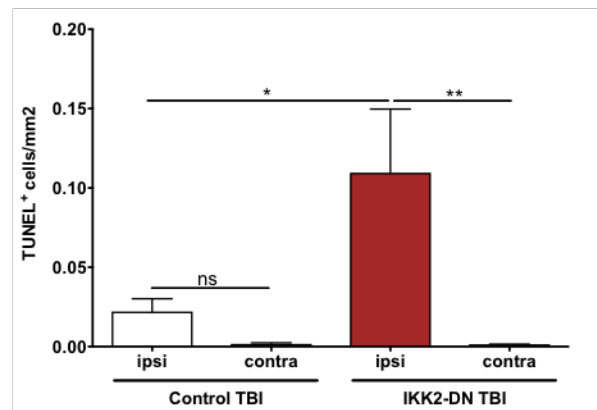
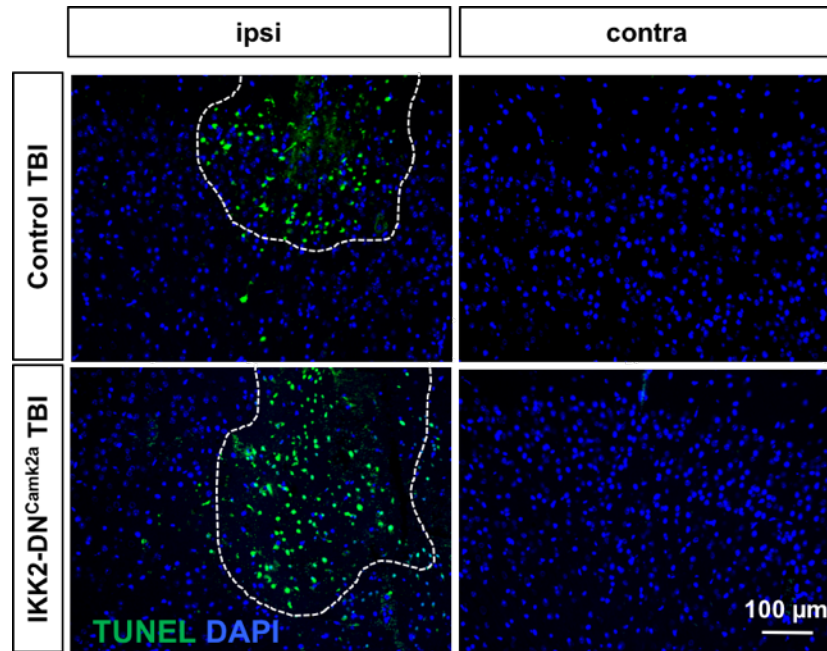


Mettang et al.
Supplementary Figure 7



Cell death is enhanced in the injured brain hemispheres of IKK2-DN^{Camk2a} mice 3d after CHI.

Immunofluorescent staining and quantification of TUNEL⁺ cells reveal significantly enhanced apoptosis in the ipsilateral cortex of IKK2-DN^{Camk2a} mice compared to control animals. Scale bar 100 μ m. * p < 0.05; ** p < 0.01; ns: not significant (p >0.05) according to 1-way ANOVA with Bonferroni correction (Control TBI n =5, IKK2-DN^{Camk2a} TBI n =3).