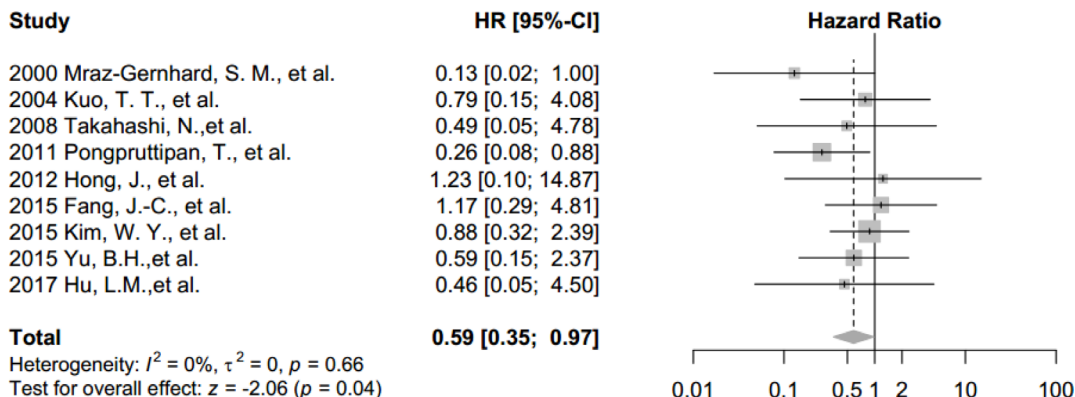
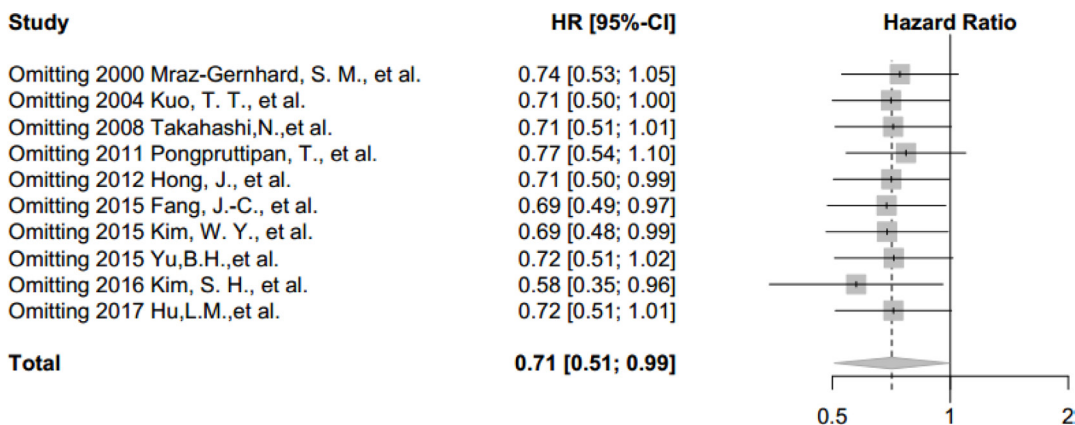


CD30 expression and survival in extranodal NK/T-cell lymphoma: a systematic review and meta-analysis

SUPPLEMENTARY MATERIALS

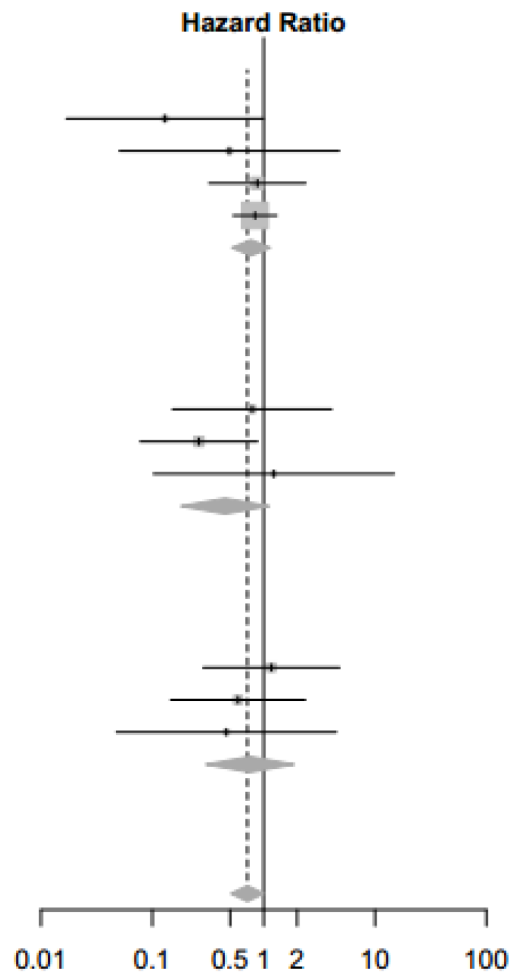


Supplementary Figure 1: Forest plot of the effect of CD30 expression on patient survival stratified by pure ENKTL cohorts.

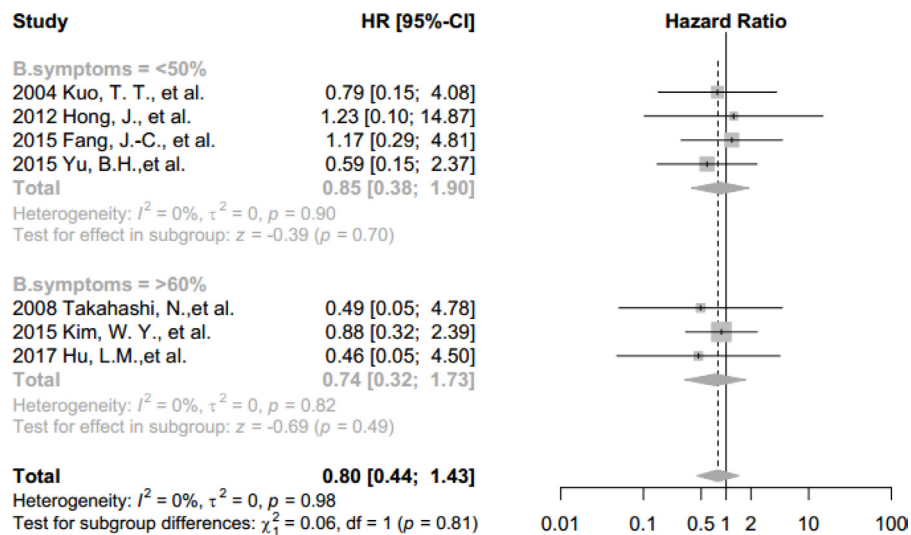


Supplementary Figure 2: Sensitivity analysis (leave-one-out) of the effect of CD30 expression on ENKTL.

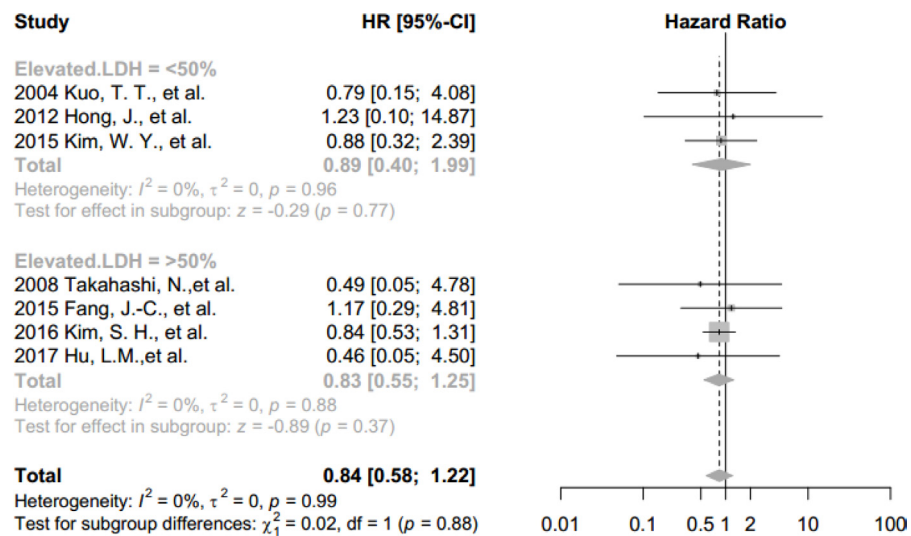
Study	HR [95%-CI]
Sites = Mixed NKTL	
2000 Mraz-Gernhard, S. M., et al.	0.13 [0.02; 1.00]
2008 Takahashi, N., et al.	0.49 [0.05; 4.78]
2015 Kim, W. Y., et al.	0.88 [0.32; 2.39]
2016 Kim, S. H., et al.	0.84 [0.53; 1.31]
Total	0.77 [0.52; 1.15]
Heterogeneity: $I^2 = 8\%$, $\tau^2 = 0.0292$, $p = 0.35$	
Test for effect in subgroup: $z = -1.28$ ($p = 0.20$)	
Sites = Nasal NKTL	
2004 Kuo, T. T., et al.	0.79 [0.15; 4.08]
2011 Pongpruttipan, T., et al.	0.26 [0.08; 0.88]
2012 Hong, J., et al.	1.23 [0.10; 14.87]
Total	0.45 [0.18; 1.12]
Heterogeneity: $I^2 = 0\%$, $\tau^2 = 0$, $p = 0.40$	
Test for effect in subgroup: $z = -1.72$ ($p = 0.09$)	
Sites = Primary intestinal NKTL	
2015 Fang, J.-C., et al.	1.17 [0.29; 4.81]
2015 Yu, B.H., et al.	0.59 [0.15; 2.37]
2017 Hu, L.M., et al.	0.46 [0.05; 4.50]
Total	0.75 [0.30; 1.87]
Heterogeneity: $I^2 = 0\%$, $\tau^2 = 0$, $p = 0.71$	
Test for effect in subgroup: $z = -0.61$ ($p = 0.54$)	
Total	0.71 [0.51; 1.00]
Heterogeneity: $I^2 = 0\%$, $\tau^2 = 0$, $p = 0.65$	
Test for subgroup differences: $\chi^2_2 = 1.14$, $df = 2$ ($p = 0.56$)	



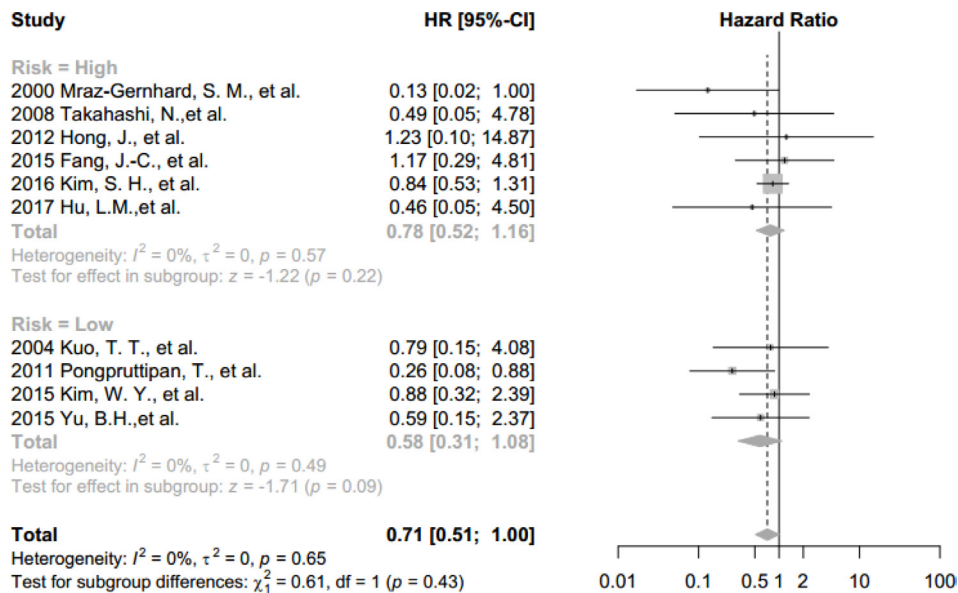
Supplementary Figure 3: Forest plot of the effect of CD30 expression on patient survival stratified by tumor site.



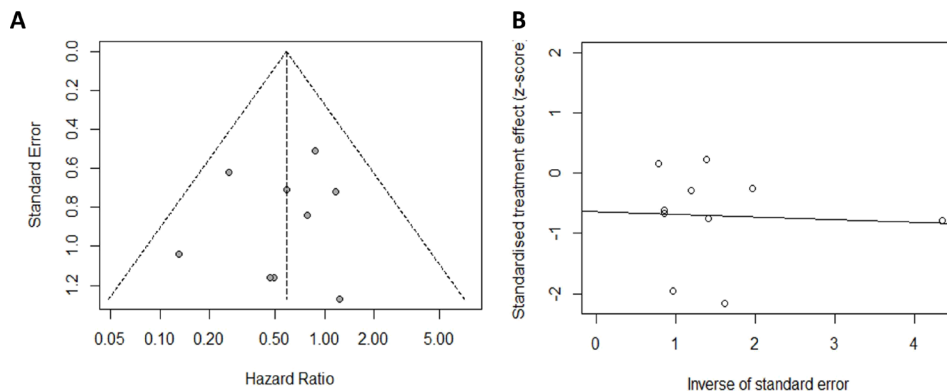
Supplementary Figure 4: Forest plot of the effect of CD30 expression on patient survival stratified by B symptoms.



Supplementary Figure 5: Forest plot of the effect of CD30 expression on patient survival stratified by elevated LDH.



Supplementary Figure 6: Forest plot of the effect of CD30 expression on patient survival stratified by risk of bias.



Supplementary Figure 7: Funnel plot for meta-analysis of 10 studies without small-study effect (A) and Radial plot including regression line (solid line) for Egger's test (B). Each point represents a separate study. There is no evidence for significant small-study bias.

Supplementary Table 1: Clinicopathological features of included studies. See Supplementary_Table_1

Supplementary Table 2: Risk of bias assessment in details. See Supplementary_Table_2