

A Novel Platform for Evaluating the Environmental Impact on Bacterial Cellulose Production

Anindya Basu^{a,b}, Sundaravadanam Vishnu Vadanana^a, Sierin Lim^{a*}

^a School of Chemical and Biomedical Engineering, Nanyang Technological University, Singapore

^b School of Pharmaceutical Sciences, Rajiv Gandhi Technical University, Bhopal, India

* Corresponding Author:

Sierin Lim

Nanyang Technological University

School of Chemical and Biomedical Engineering

70 Nanyang Drive

Singapore 637457

Office: Block N1.3-B3-11

Supplementary Information

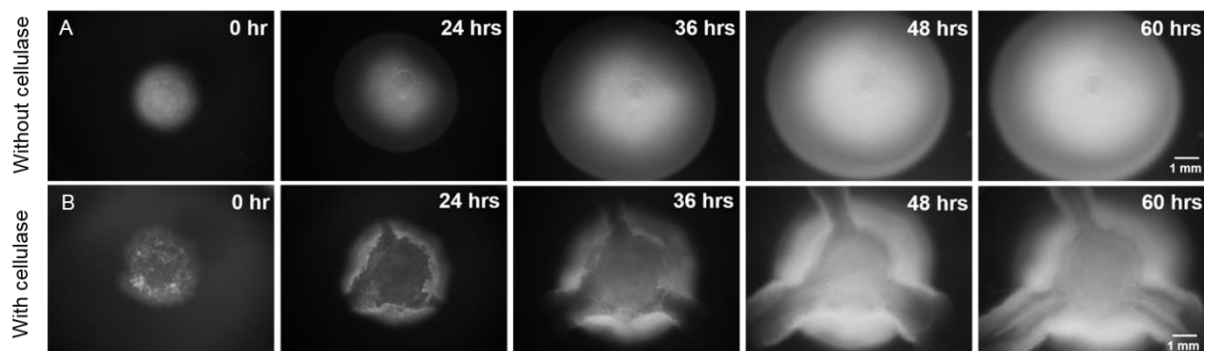


Figure S1 Typical growth patterns of *G. xylinus* 700178 bacteria grown in the absence (A) and in the presence (B) of cellulase at different time points during incubation.