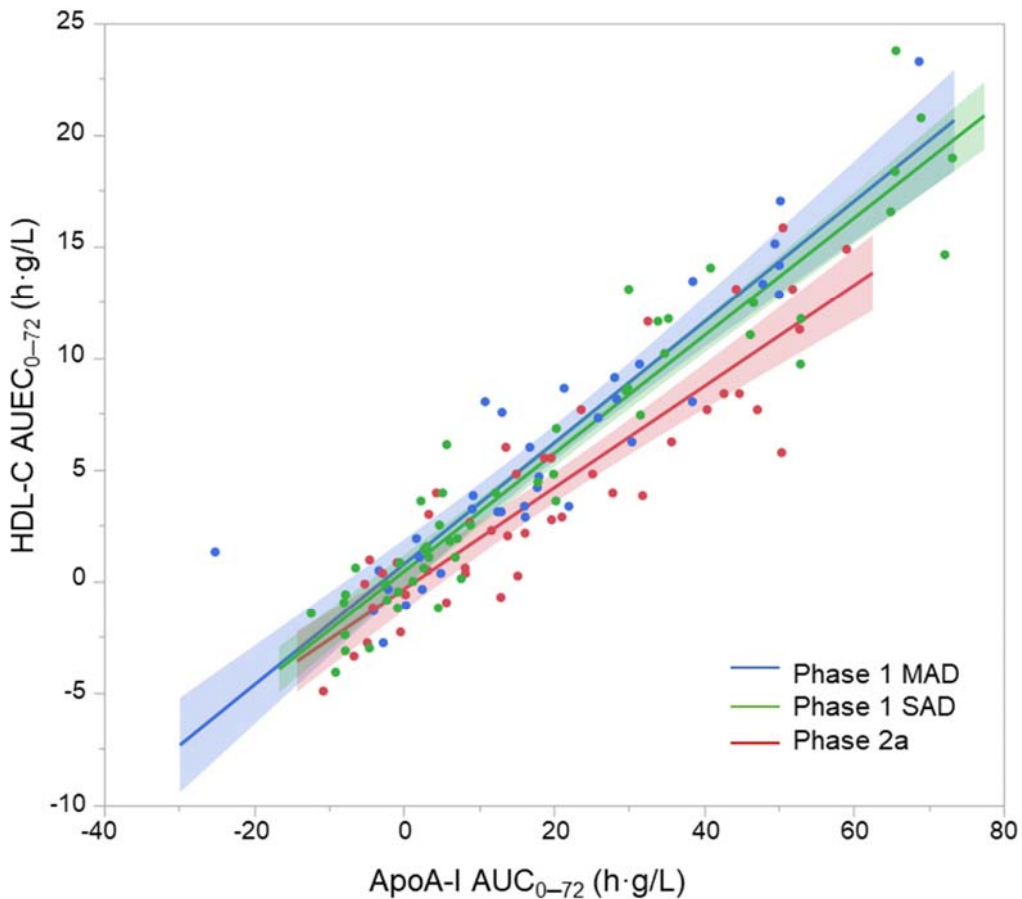


Supplement Material

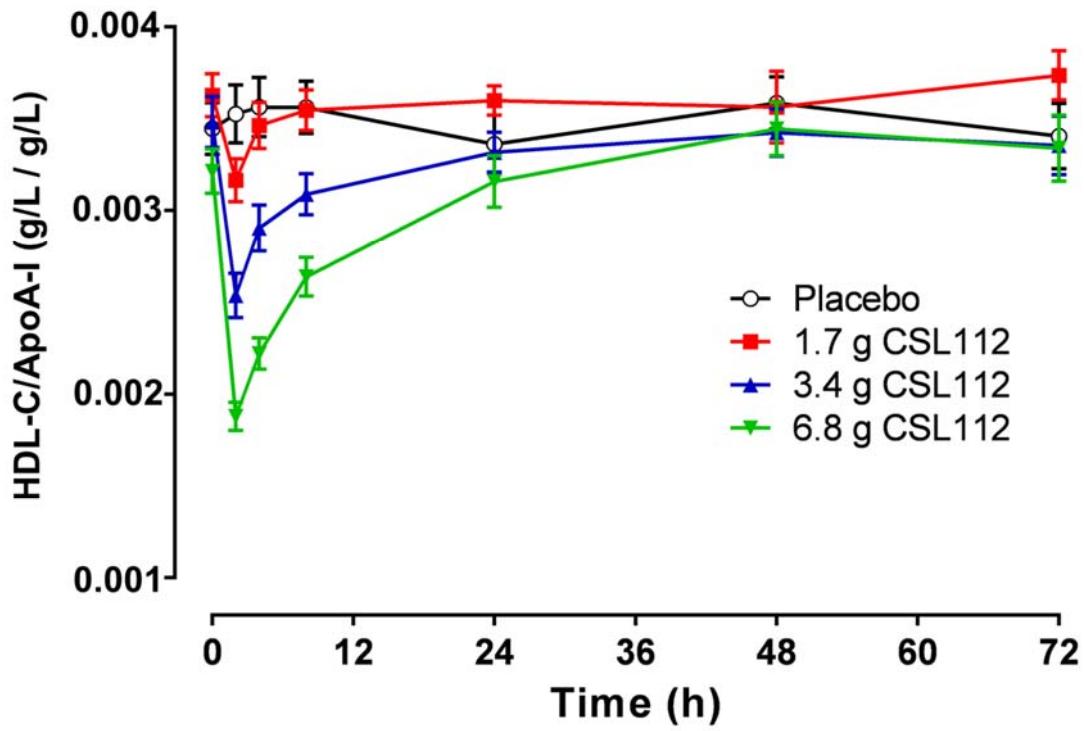
Supplementary Figure I. HDL-cholesterol profile following infusion of CSL112

The relationship of baseline-corrected apolipoprotein A-I (apoA-I) exposure (area under the curve 0–72 h [AUC_{0-72}]) and baseline-corrected HDL-cholesterol (HDL-C) exposure (area under the effect curve 0–72 h [$AUEC_{0-72}$]) is shown in healthy volunteers (Phase 1 SAD and MAD studies) and in a Phase 2a study in stable atherosclerotic disease for comparison. Shown are linear regression lines and 95% confidence interval for each study, calculated using random effects regression models with patient as the random effect and testing the parallelism of slopes hypothesis (difference in slopes, $p=0.1883$).



Supplementary Figure II. HDL-cholesterol:apolipoprotein A-I ratio over time

Shown are mean \pm standard deviation of the ratio of HDL-cholesterol (HDL-C) to apolipoprotein A-I (apoA-I) in stable atherosclerotic disease patients participating in the Phase 2a study.



Supplementary Figure III. CSL112 does not increase non-HDL-cholesterol.

Shown are mean + standard deviation of unadjusted non-HDL-cholesterol.

