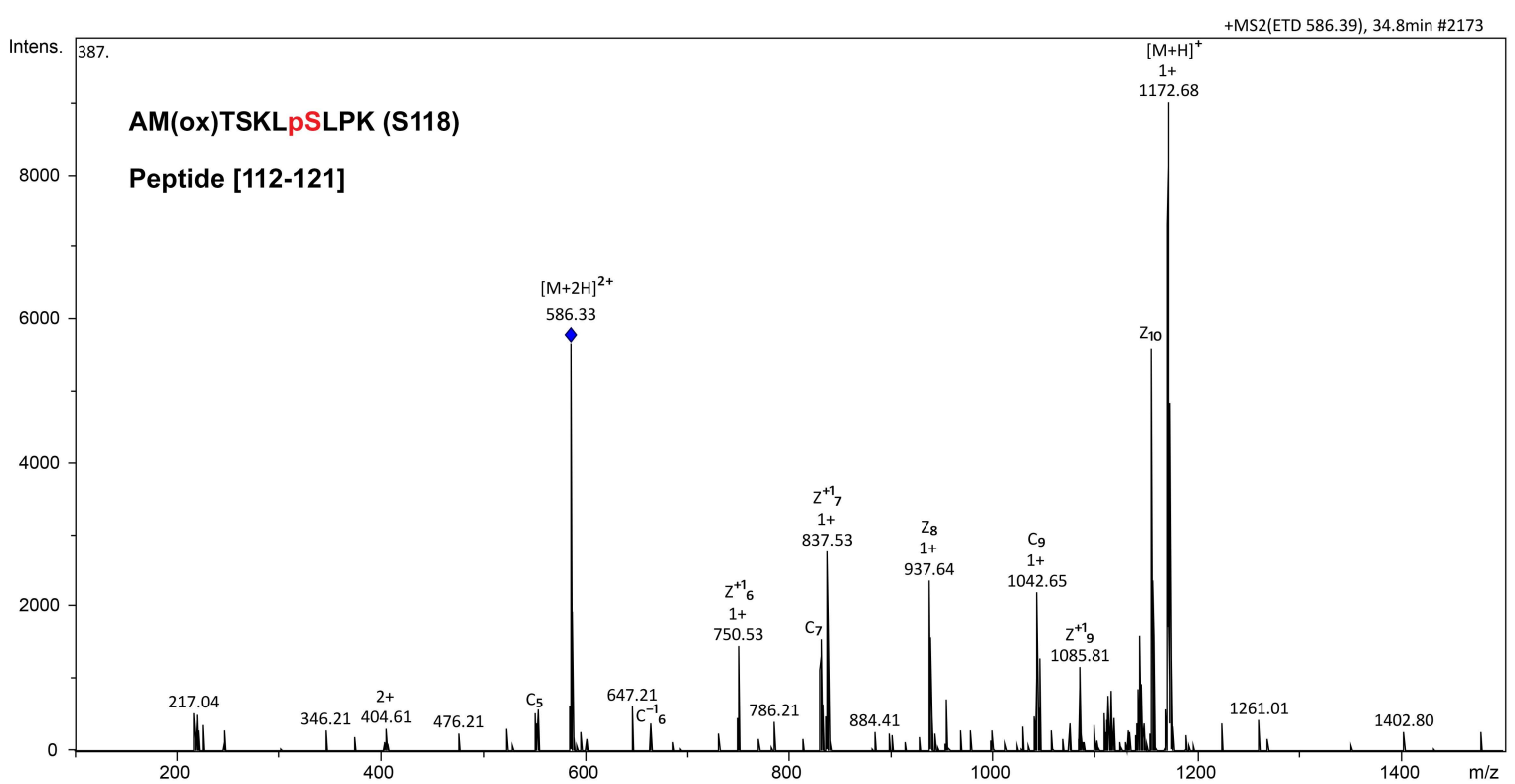
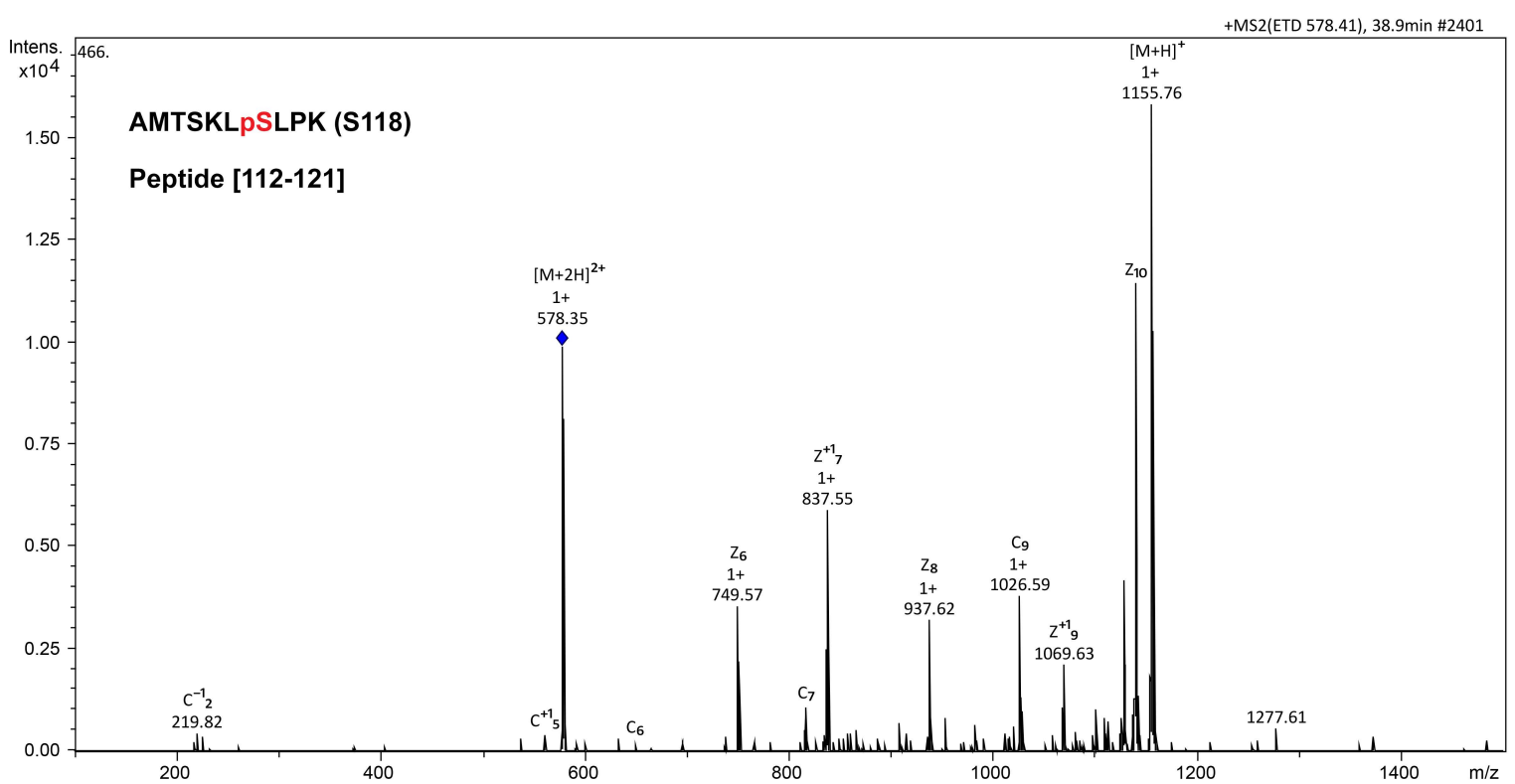
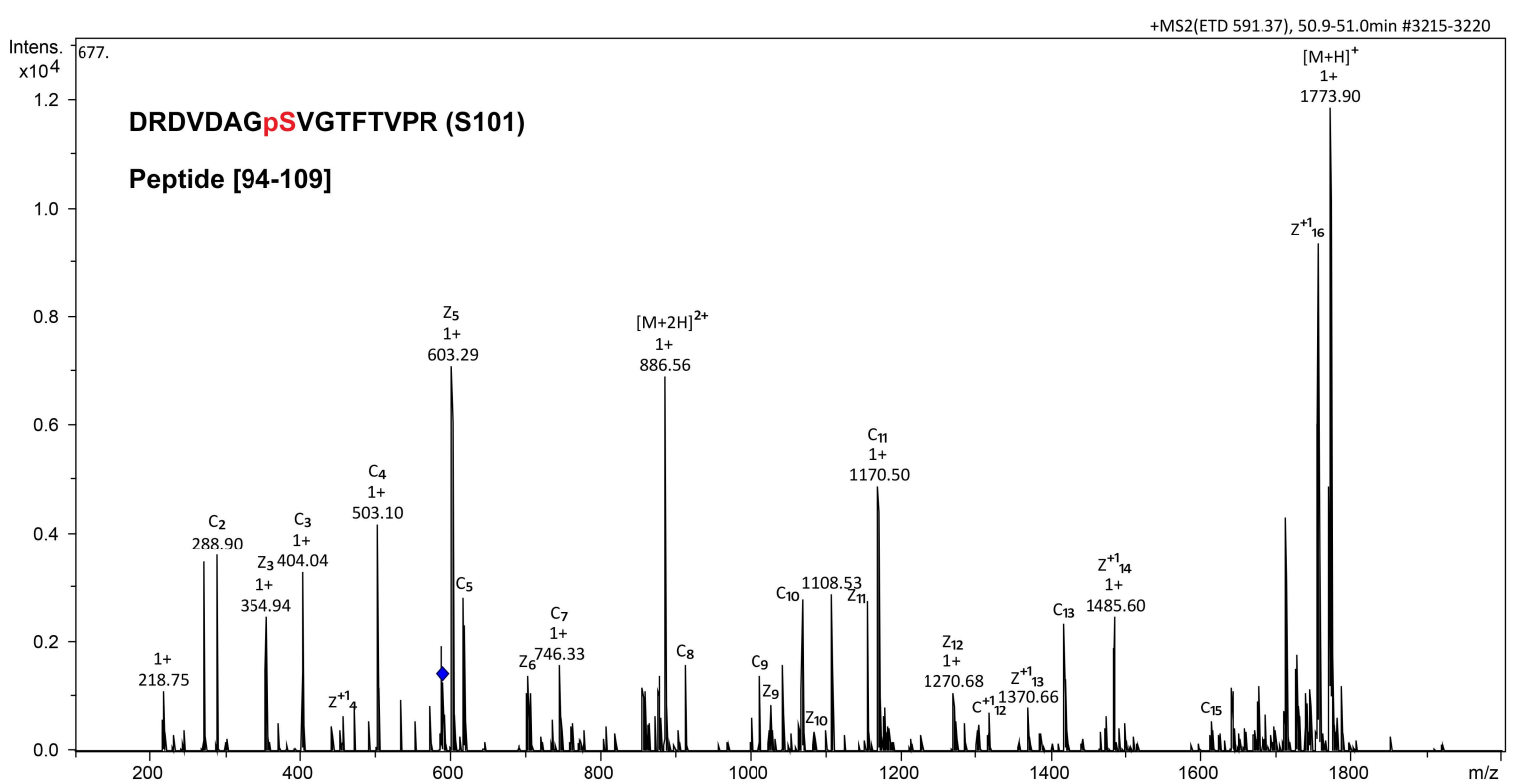
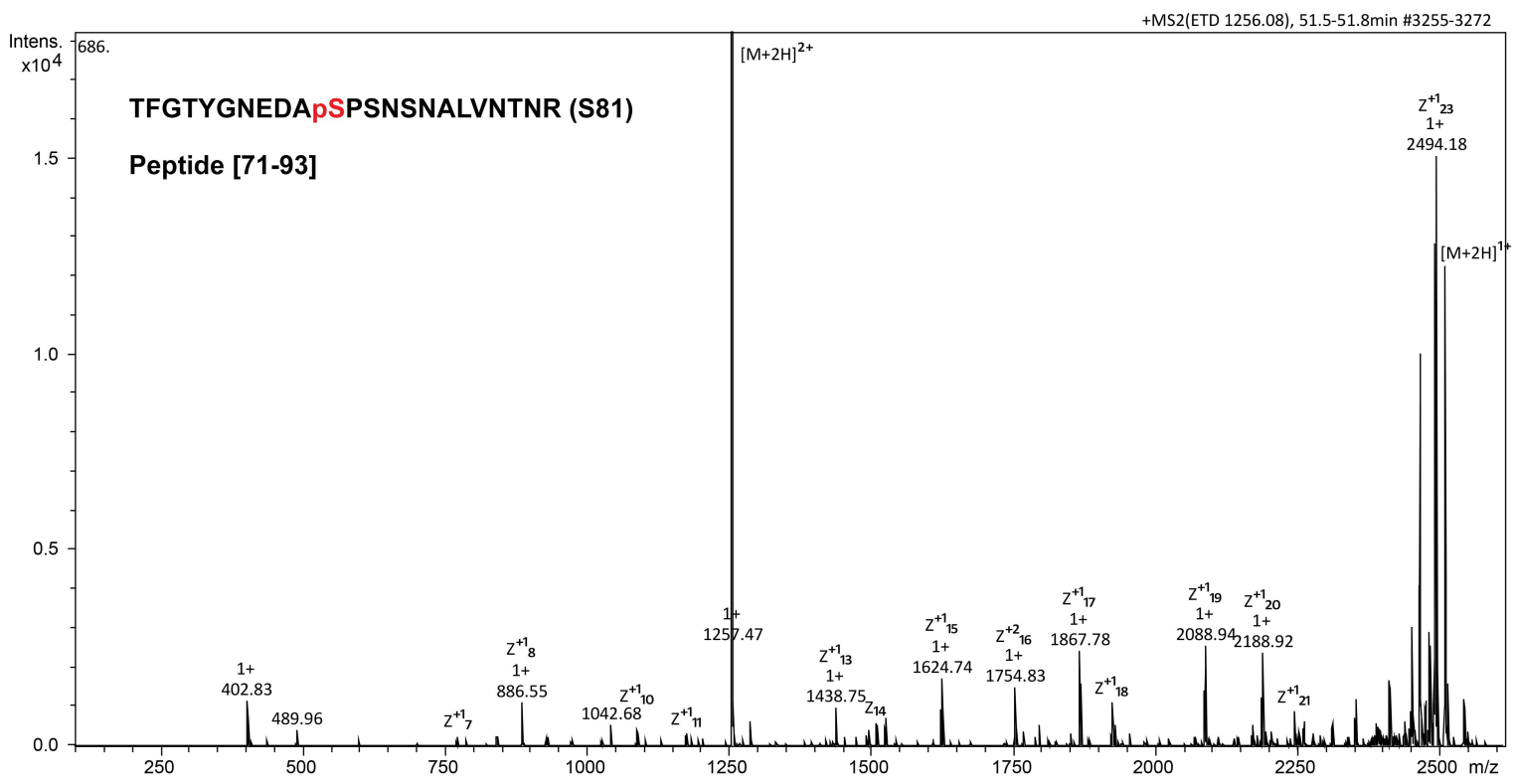
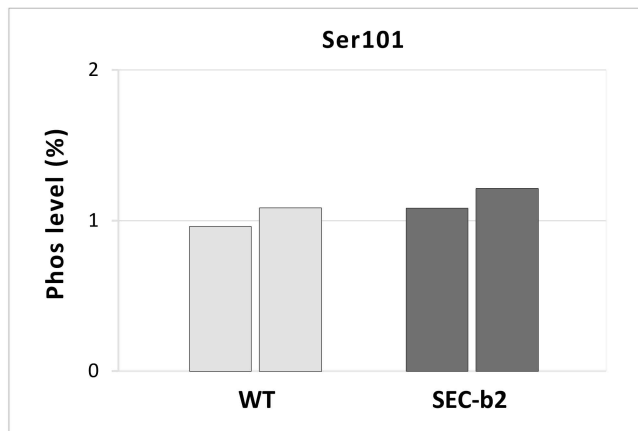
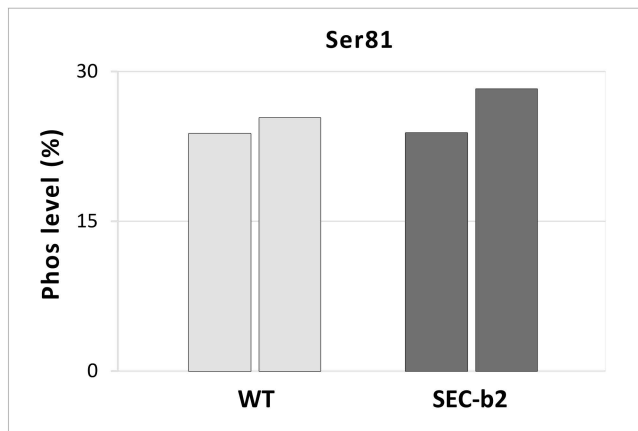


Supporting Figure S1



Supporting Figure S2



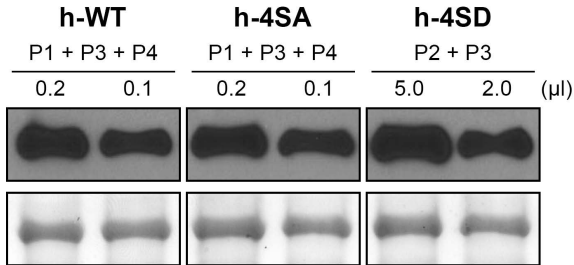
	WT (1)	WT (2)	WT average	SEC-b2 (1)	SEC-b2 (2)	SEC-b2 average
Phos level at S81 (%) [40-93] [60-93] [60-95]	23.75	25.33	24.53	23.82	28.24	25.94
Phos level at S101 (%) [94-109] [96-109]	0.96	1.08	1.02	1.08	1.21	1.14

Supporting Figure S3



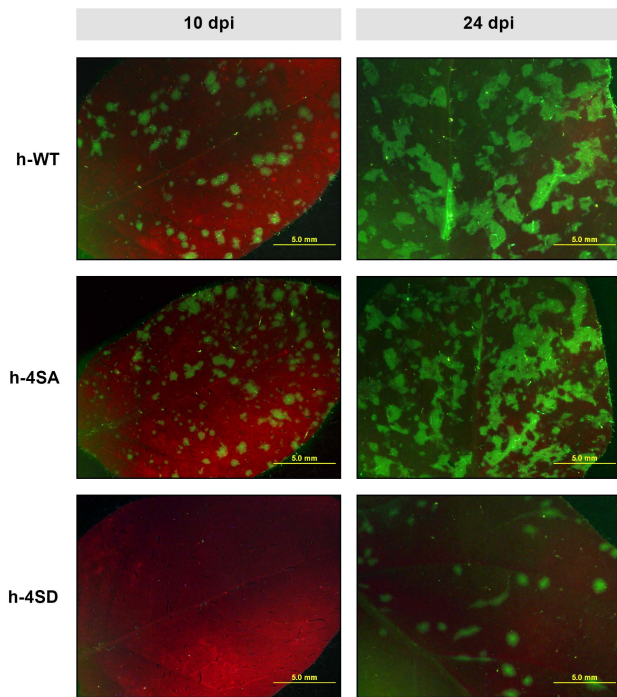
Supporting Figure S4

N. benthamiana

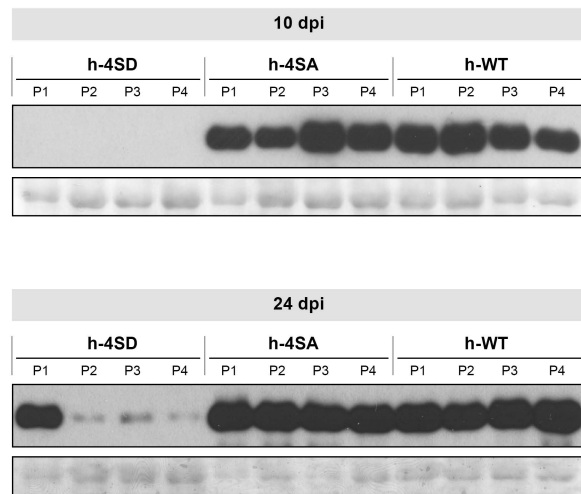


Supporting Figure S5

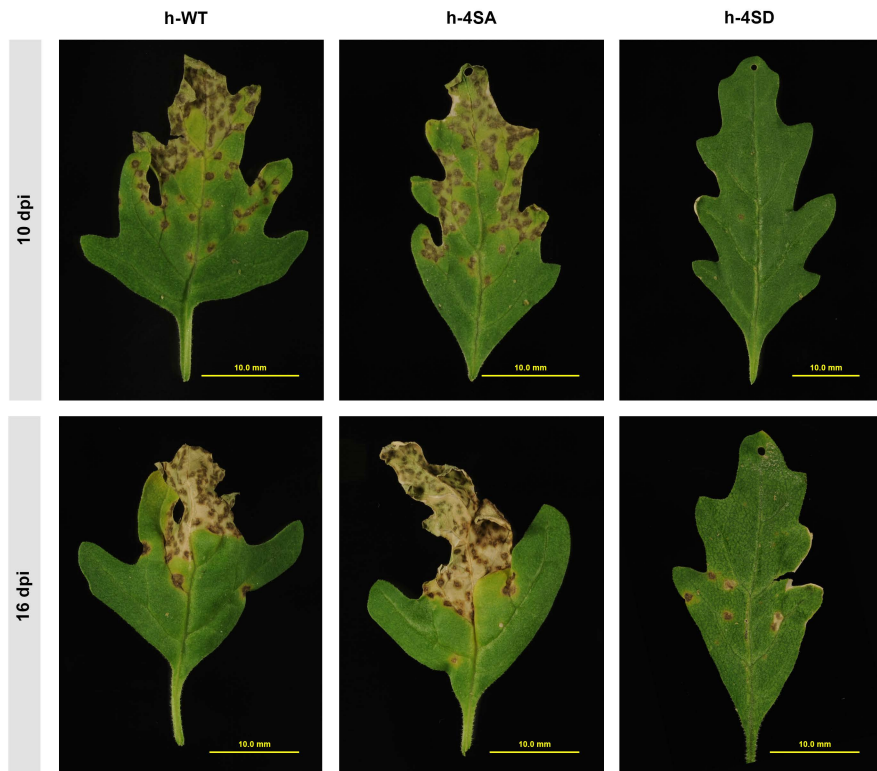
A



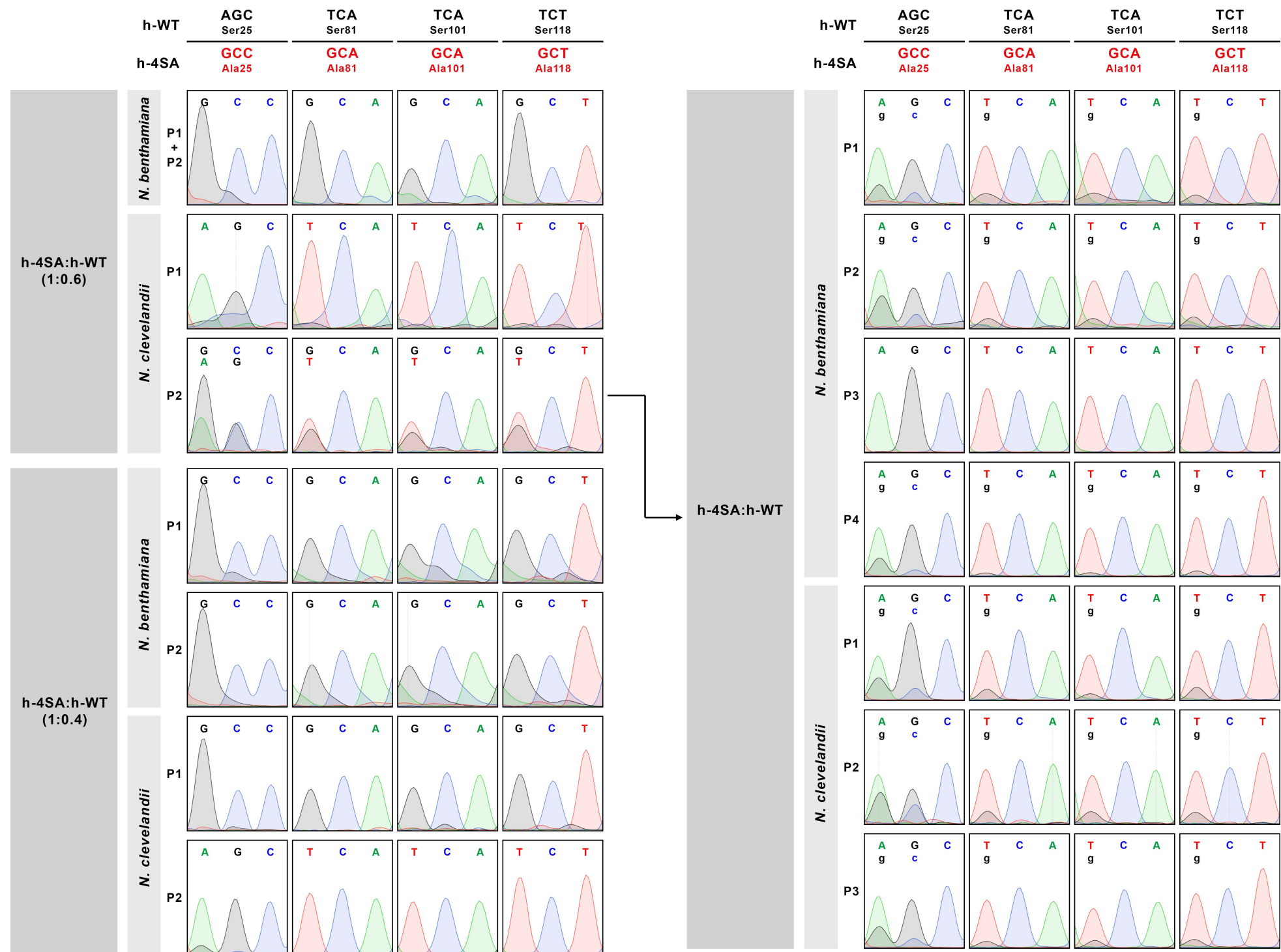
B



C



Supporting Figure S6



Supporting Figure S7

