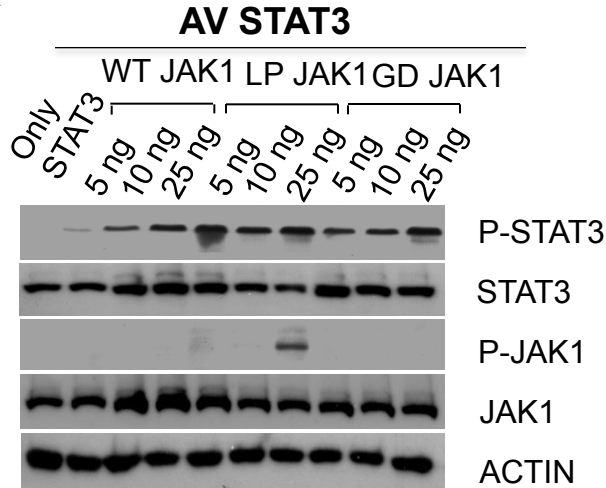
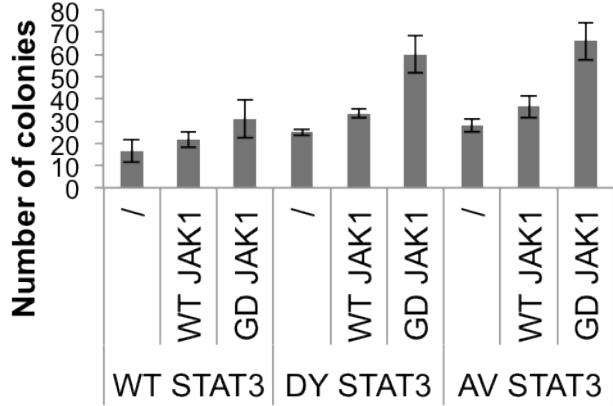


A



B



C

	JAK1 WT	JAK1 GD	JAK1 GD - JAK1 WT
STAT3 WT	16.5	31	14.5
STAT3 DY	25	60	
STAT3 DY-STAT3 WT	8.5		

Expected DY STAT3/GD JAK1= 16.5 + 8.5 + 14.5 = 39.5

Counted Colony = 60, 52% more than expected

D

	JAK1 WT*	JAK1 GD	JAK1 GD - JAK1 WT
STAT3 WT	21.5	31	9.5
STAT3 DY	33.5	60	
STAT3 DY - STAT3 WT	12		

Expected DY STAT3/GD JAK1= 21.5 + 12 + 9.5 = 43

Counted Colony = 60, 40% more than expected

E

	JAK1 WT	JAK1 GD	JAK1 GD - JAK1 WT
STAT3 WT	16.5	31	14.5
STAT3 AV	28	66	
STAT3 AV - STAT3 WT	11.5		

Expected AV STAT3/GD JAK1= 16.5 + 11.5 + 14.5 = 42.5

Counted Colony = 66, 55% more than expected

F

	JAK1 WT*	JAK1 GD	JAK1 GD - JAK1 WT
STAT3 WT	21.5	31	9.5
STAT3 AV	36.5	66	
STAT3 AV - STAT3 WT	15		

Expected AV STAT3/ GD JAK1= 21.5 + 15 + 9.5 = 46

Counted Colony = 66, 43% more than expected