

# Hedgehog Interacting Protein Promotes Fibrosis and Apoptosis in Glomerular Endothelial Cells in Murine Diabetes

Xin-Ping Zhao<sup>1</sup>, Shiao-Ying Chang<sup>1</sup>, Min-Chun Liao<sup>1</sup>, Chao-Sheng Lo<sup>1</sup>, Isabelle Chenier<sup>1</sup>, Hongyu Luo<sup>1</sup>, Jean-Louis Chiasson<sup>1</sup>, Julie R. Ingelfinger<sup>2</sup>, John S.D. Chan<sup>1</sup> and Shao-Ling Zhang<sup>1§</sup>

<sup>1</sup>Université de Montréal  
Department of Medicine  
Centre de recherche du Centre hospitalier de l'Université de Montréal (CRCHUM)  
Tour Viger, 900 rue Saint-Denis, Montréal, QC, Canada H2X 0A9

<sup>2</sup>Harvard Medical School  
Pediatric Nephrology Unit  
Massachusetts General Hospital  
55 Fruit Street, Boston, MA 02114-3117, USA

The authors declare that there is no potential conflict of interest relevant to this article.

§ To whom correspondence should be addressed: Shao-Ling Zhang, Ph.D.

Tel: (514) 890-8000 ext. 15633

Fax: (514) 412-7204

Email: [shao.ling.zhang@umontreal.ca](mailto:shao.ling.zhang@umontreal.ca)

Short Title: Hedgehog interacting protein (Hhip) in diabetic nephropathy

Key words: Hhip gene expression, diabetic nephropathy, glomerular endothelial cells (GECs)

Word Count: 14 words; Abstract: 182 words; Text: 2683

# Supplemental Figure 1

Fig. S1a

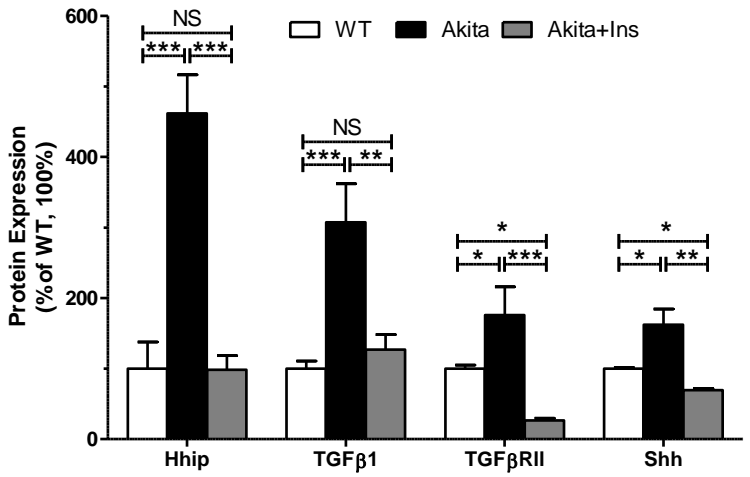
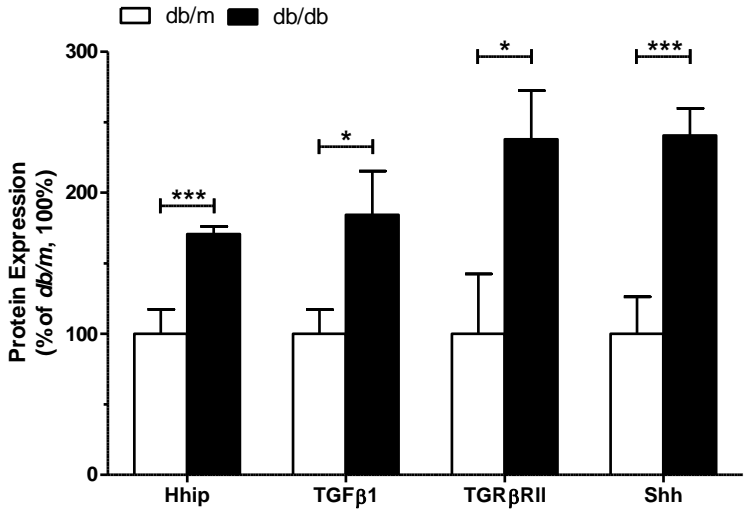


Fig. S1b



# Supplemental Figure 2

Fig. S2a

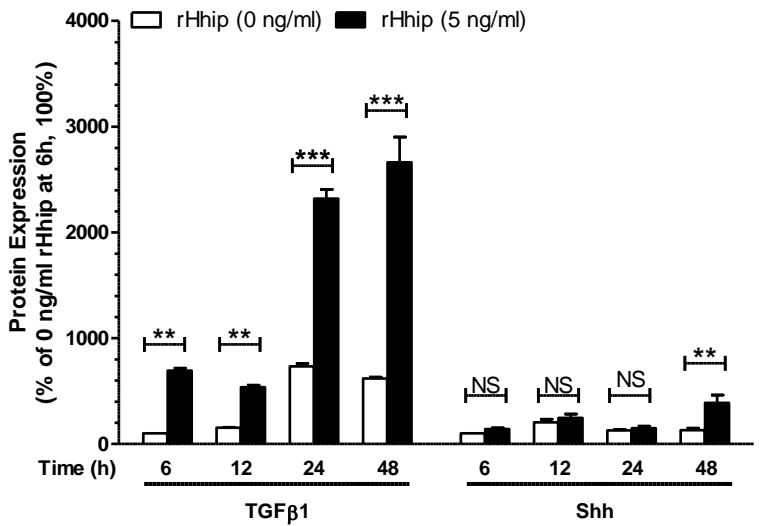


Fig. S2b

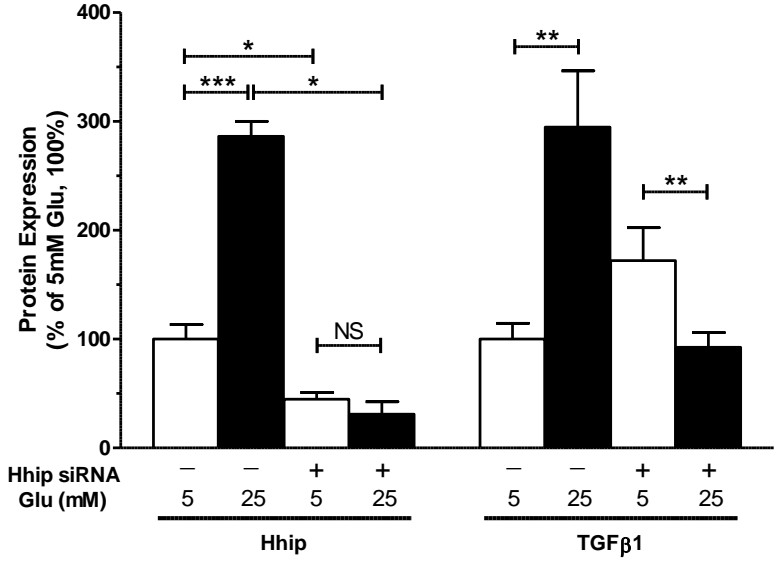
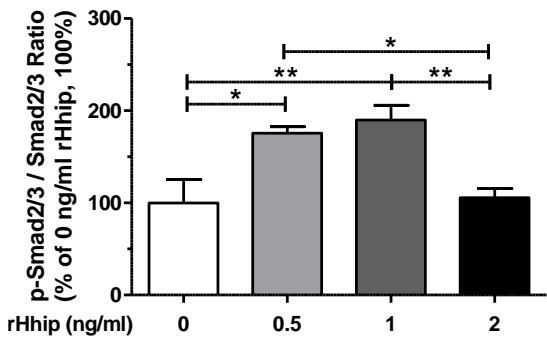
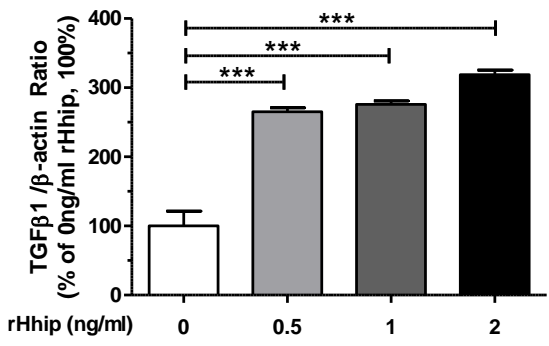
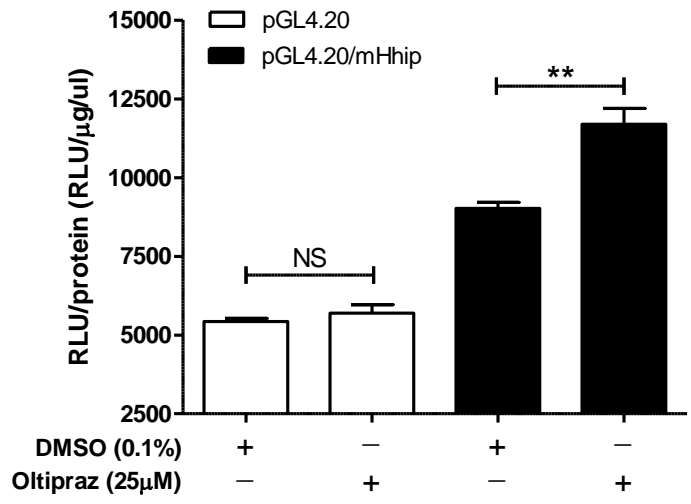


Fig. S2c



Supplemental Figure 3

Fig. S3



### **SUPPLEMENTAL FIGURE LEGEND**

S1. Semi-quantification of WB analysis in Akita (S1a--Figure 1b) and *db/db* mice (S1b--Figure 1e). \* $P \leq 0.05$ ; \*\* $P \leq 0.01$ ; \*\*\* $P \leq 0.001$ ; NS, non-significant; Values represent the mean  $\pm$  SEM.

S2. Semi-quantification of WB analysis (S2a-S2c). S2a (Figure 5a); S2b (Figure 5b) and S2c (Figure 5d), \* $P \leq 0.05$ ; \*\* $P \leq 0.01$ ; \*\*\* $P \leq 0.001$ ; NS, non-significant. Values represent the mean  $\pm$  SEM.

S3. Oltipraz (an Nrf2 activator, 25 $\mu$ M) stimulates pGL4.20/mHhip promoter activity analyzed by luciferase assay, \*\* $P \leq 0.01$ ; \*\*\* $P \leq 0.001$ ; NS, non-significant vs. mECs transfected with pGL4.20 (1 $\mu$ g/ml) (100%); Values represent the mean  $\pm$  SEM.