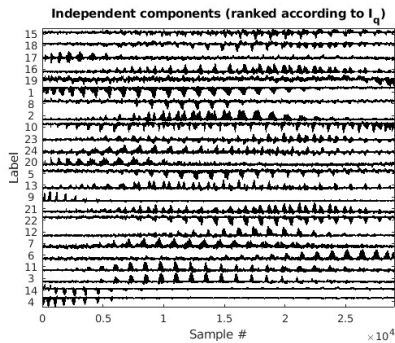
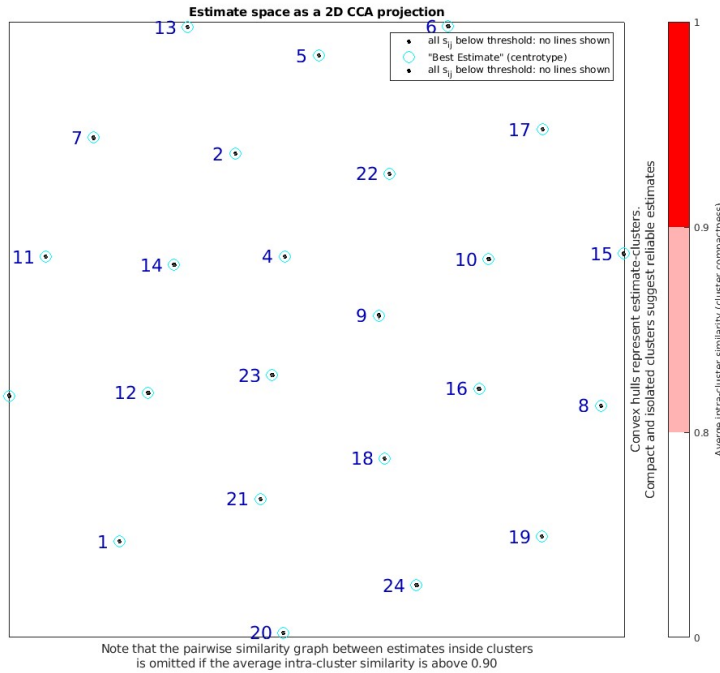
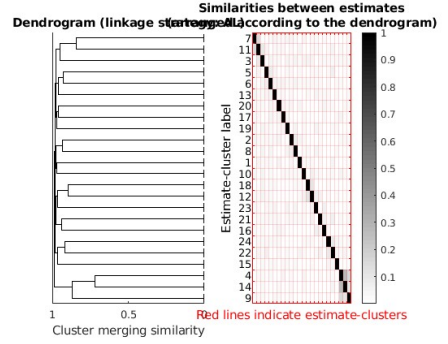
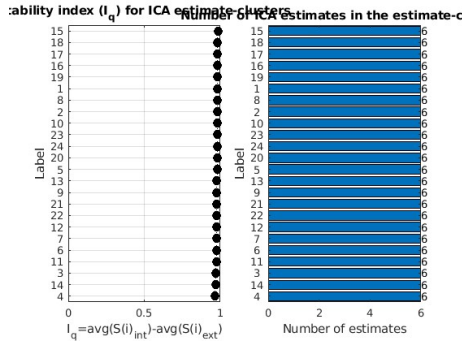
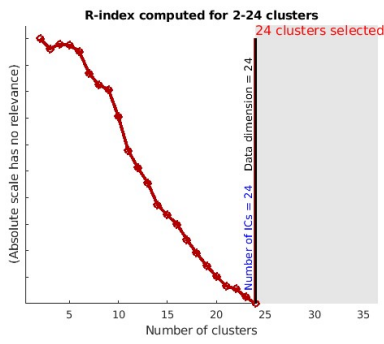


Contents

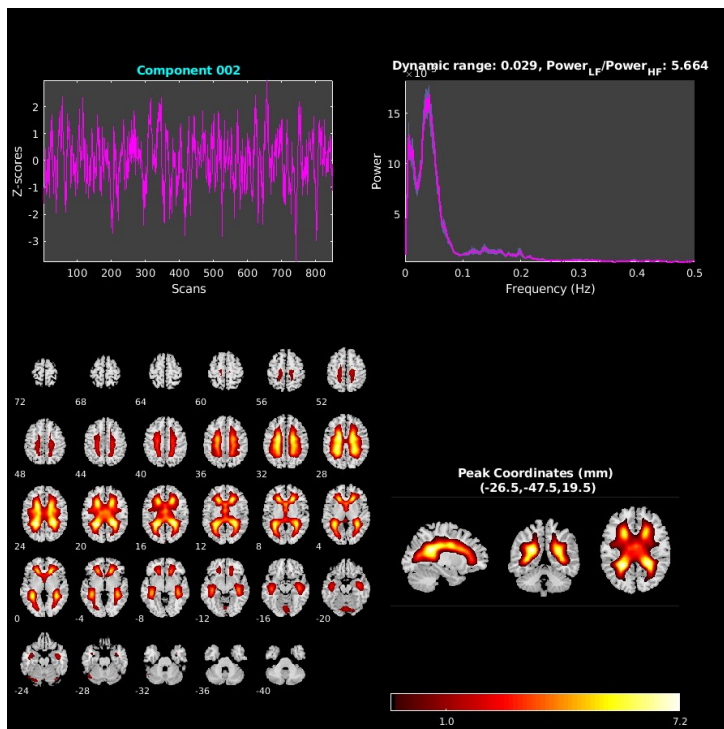
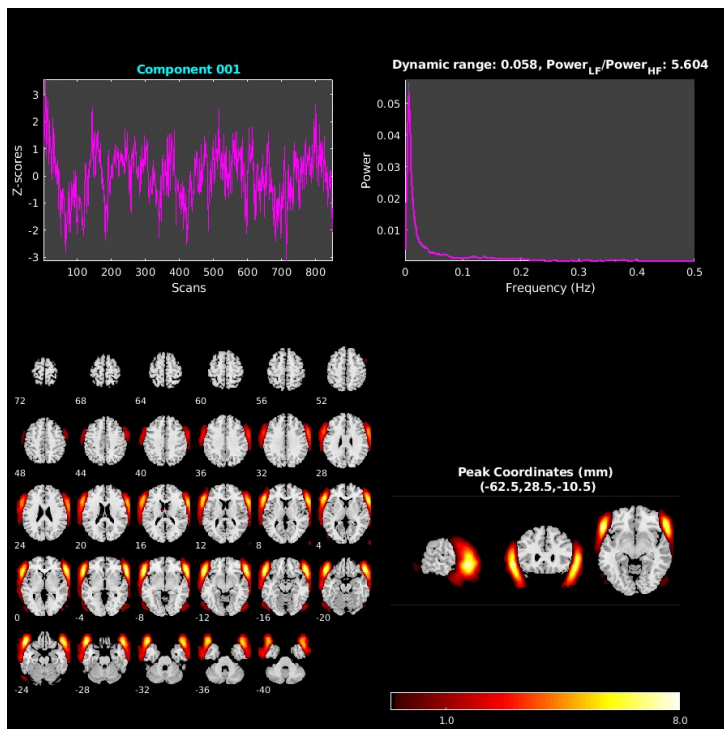
- ICASSO Plots
- Mean Components
- FNC correlations

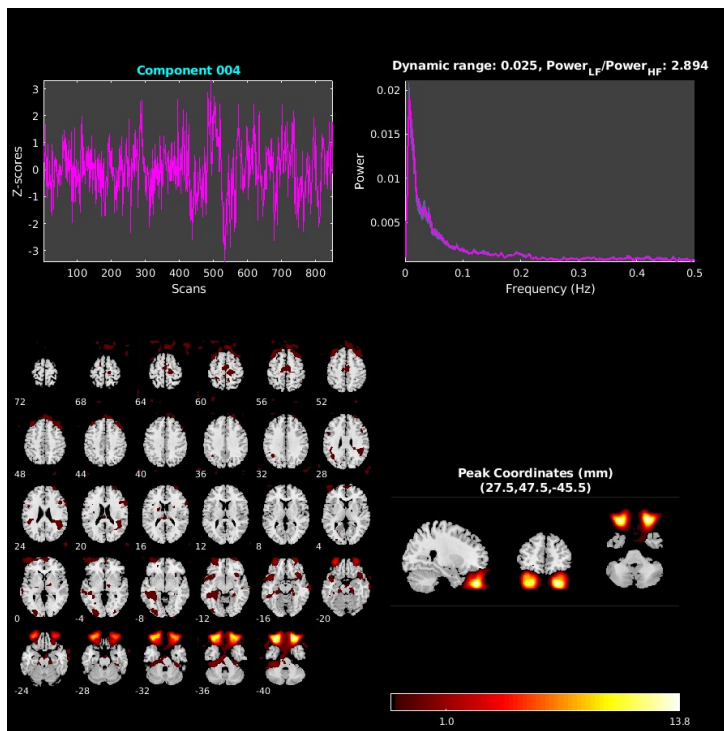
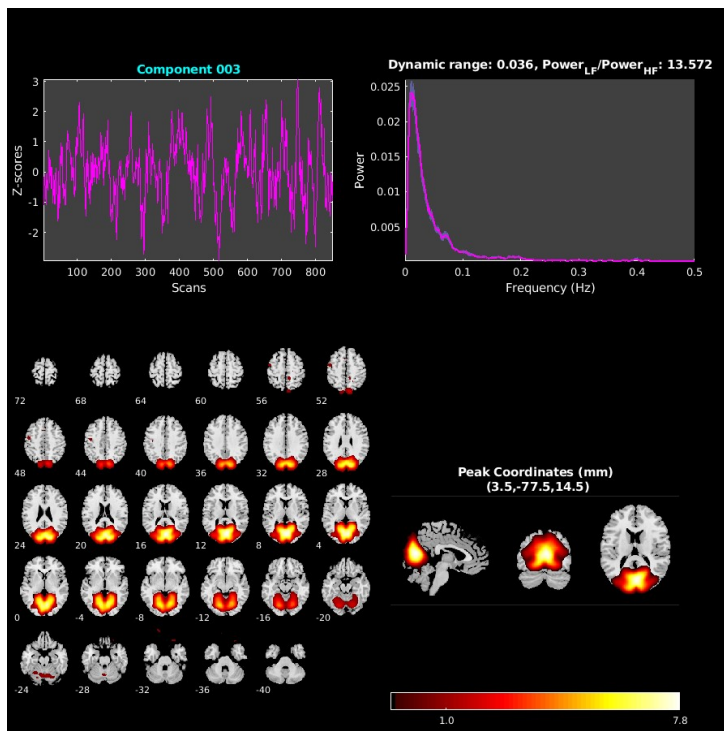
ICASSO Plots

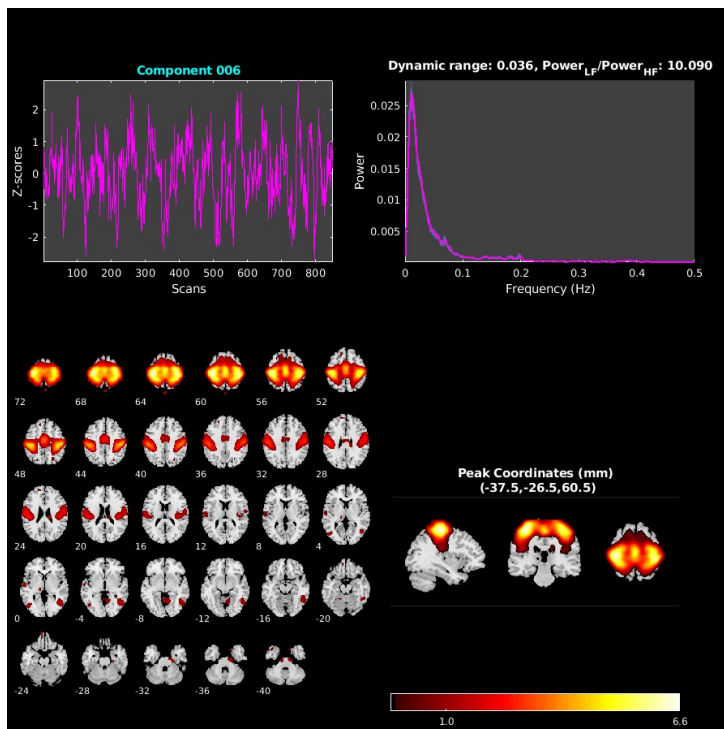
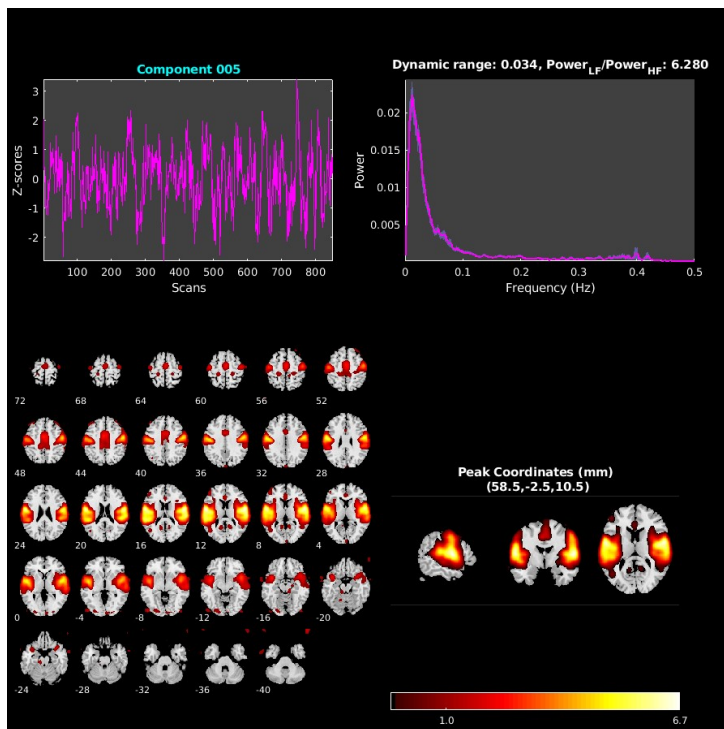


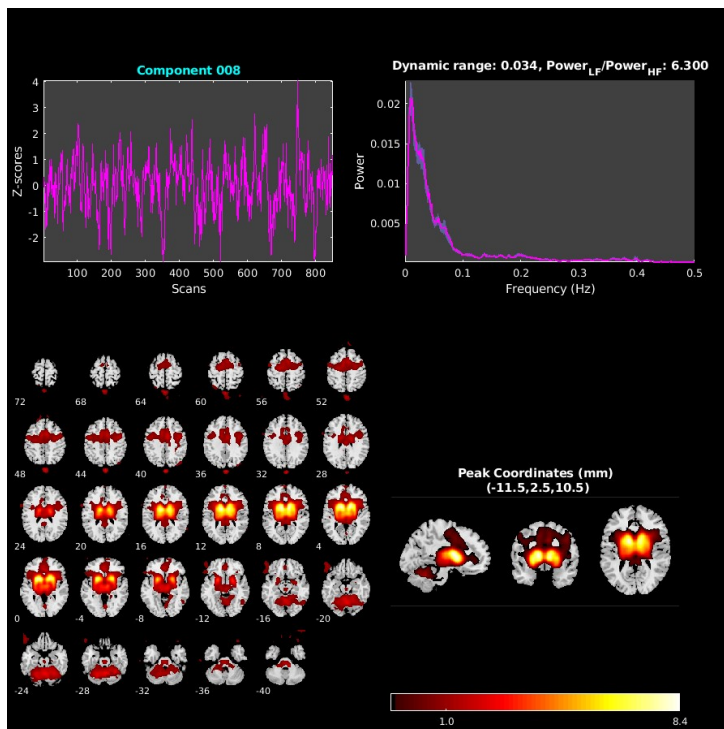
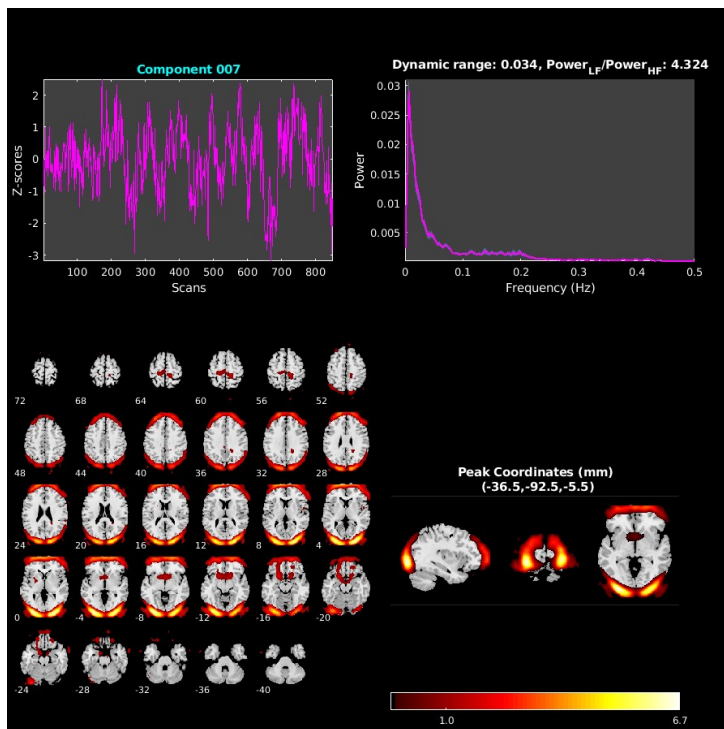
Mean Components

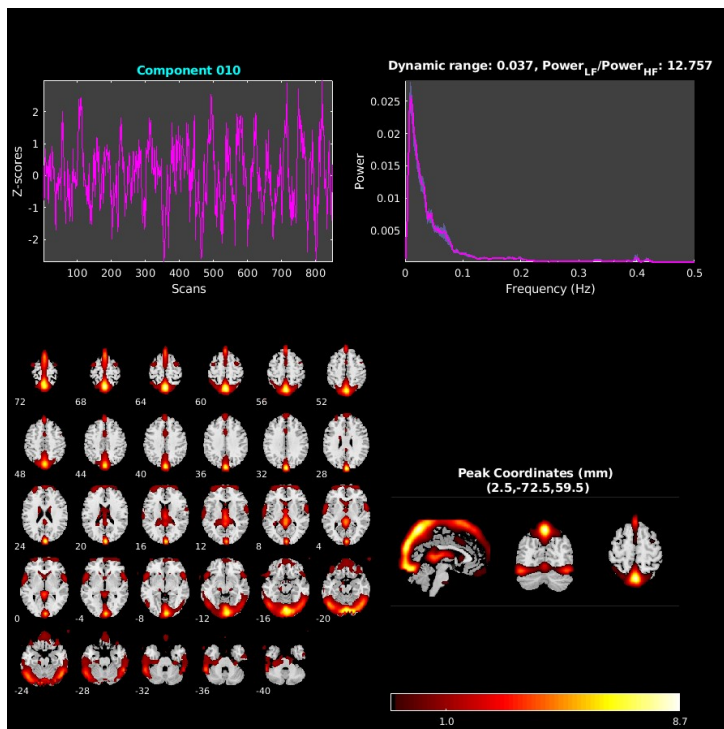
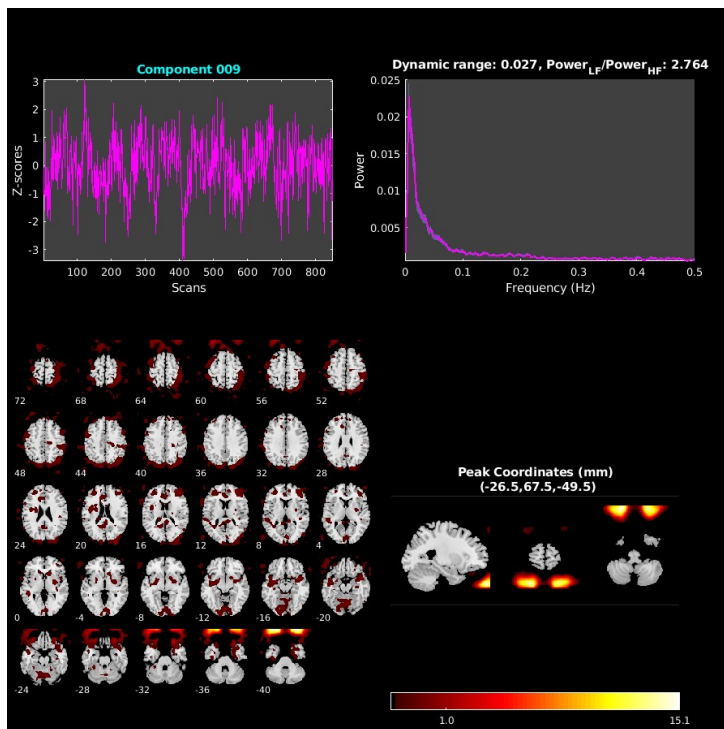
Mean across all subjects and sessions is computed for each component a) Timecourse - Mean timecourse is converted to z-scores. b) Spectra - Timecourses spectra is computed for each data-set and averaged across sessions. Mean and standard error of mean is shown in the figure. c) Montage - Axial slices 40:472 are shown. d) Ortho slices - Ortho plot is shown for the peak voxel and coordinates are reported.

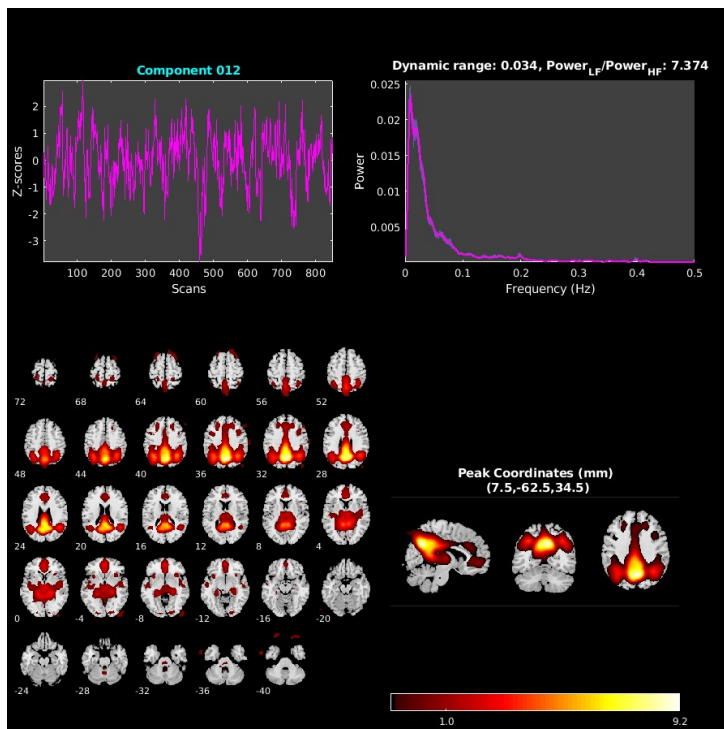
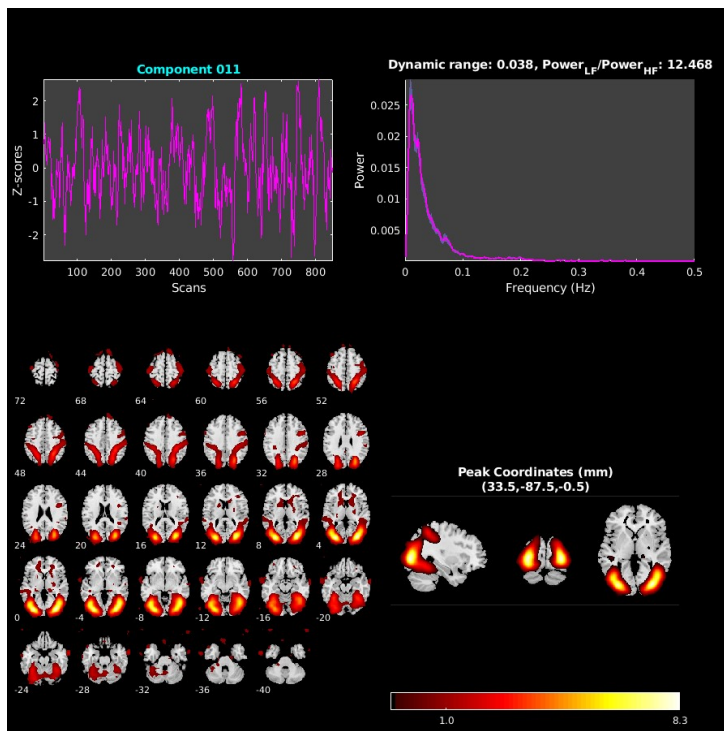


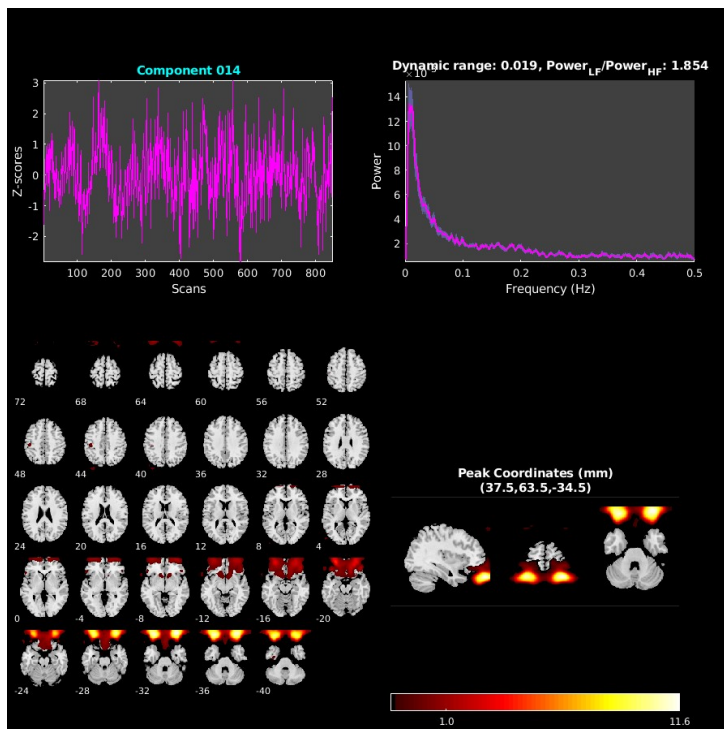
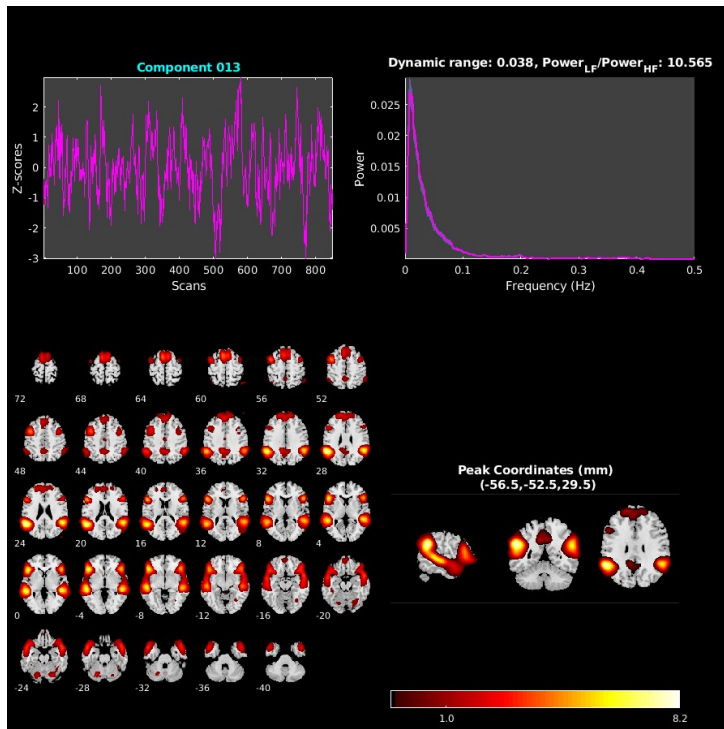




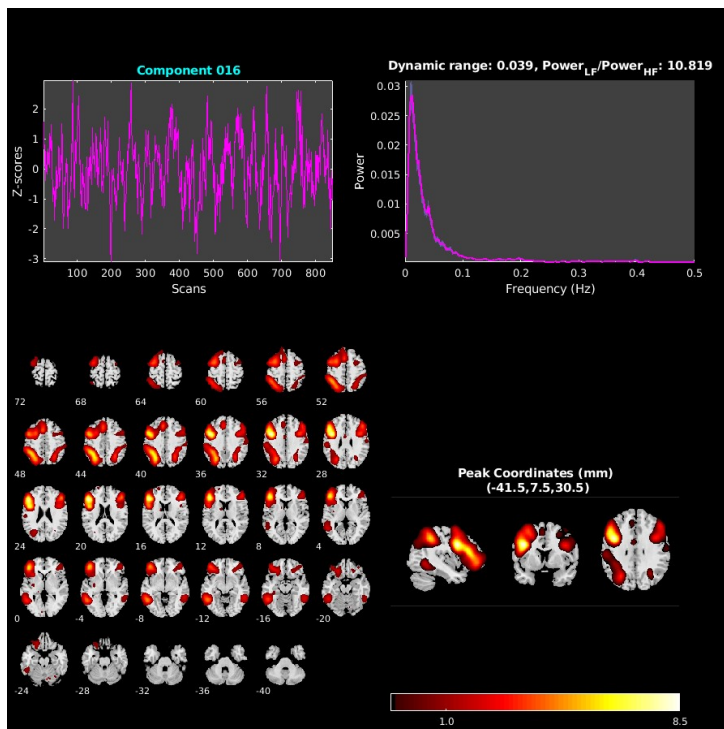
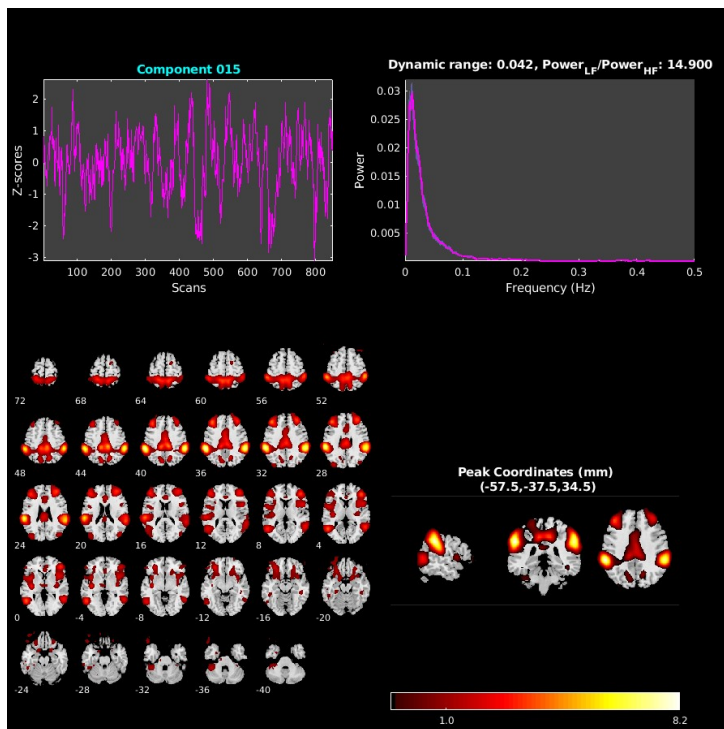


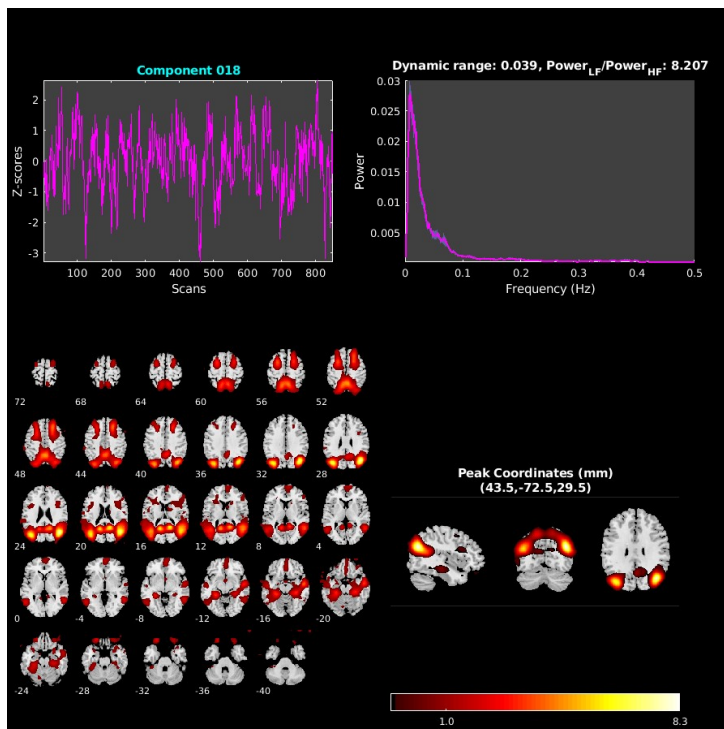
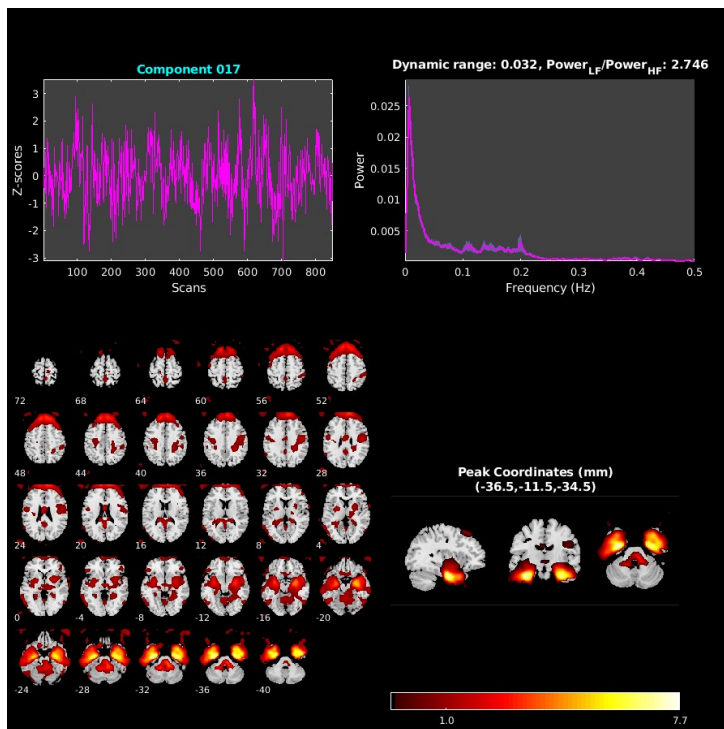


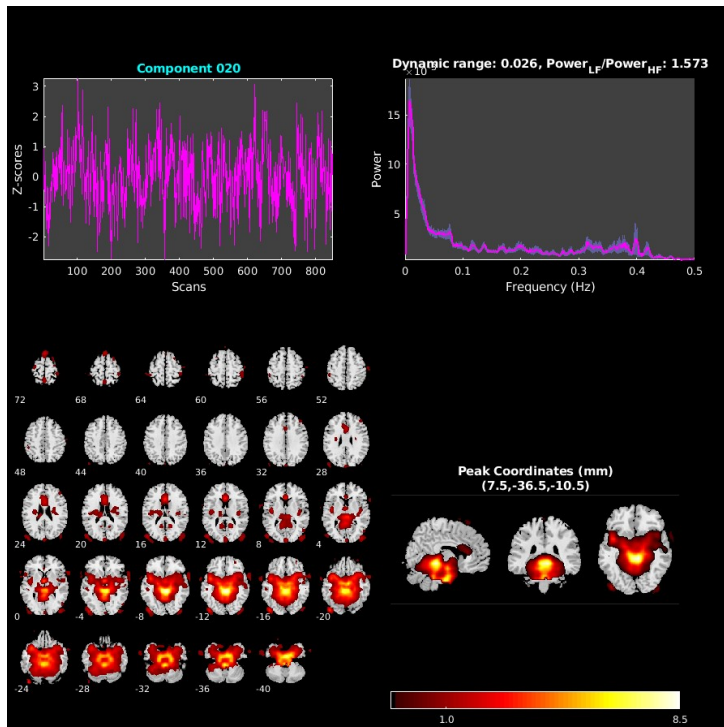
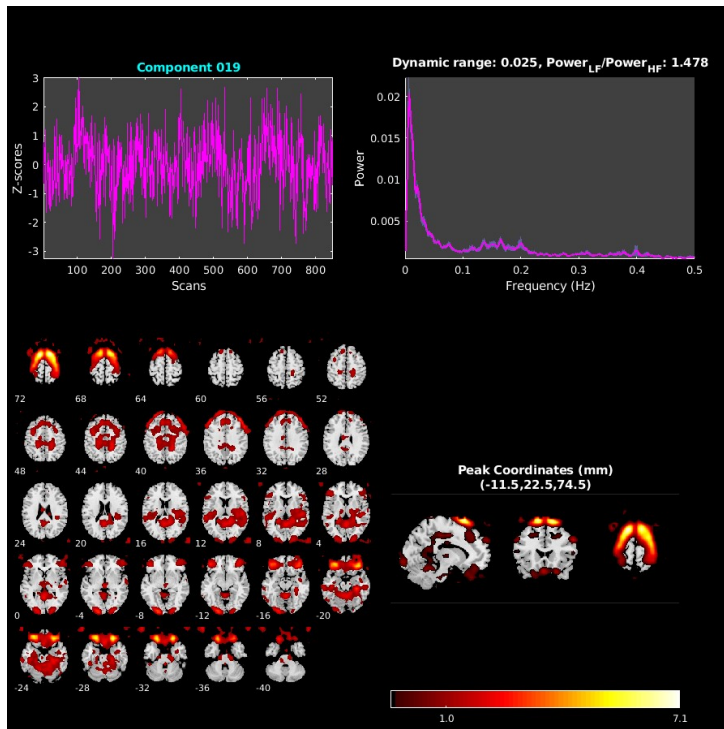


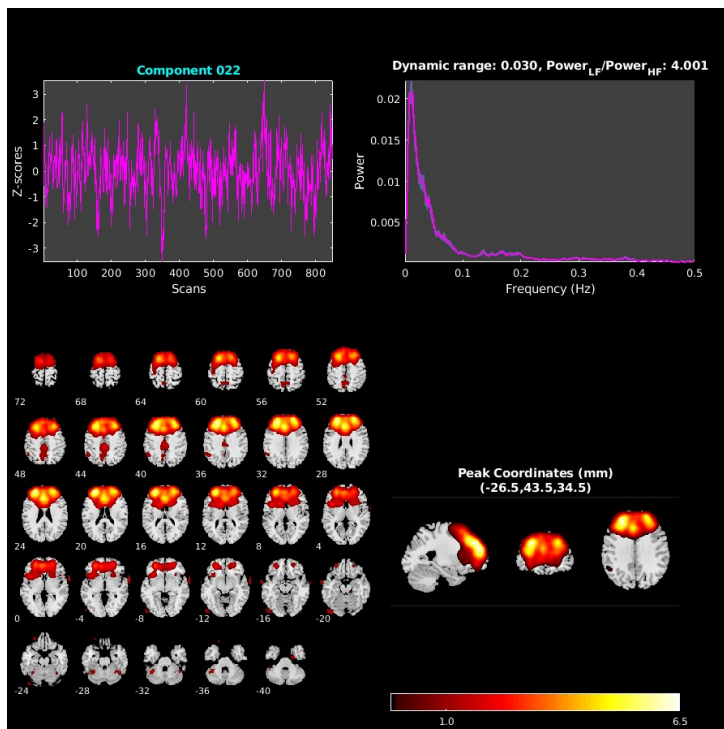
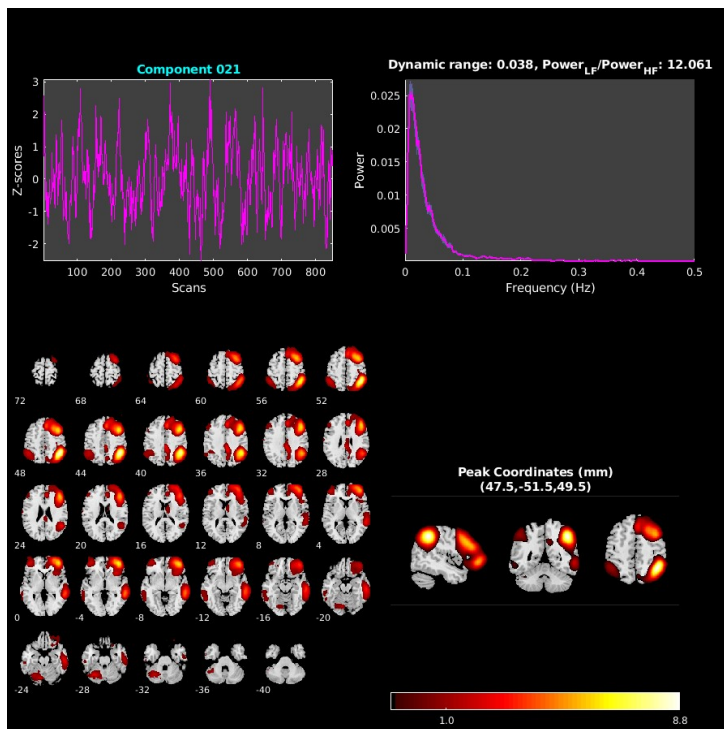


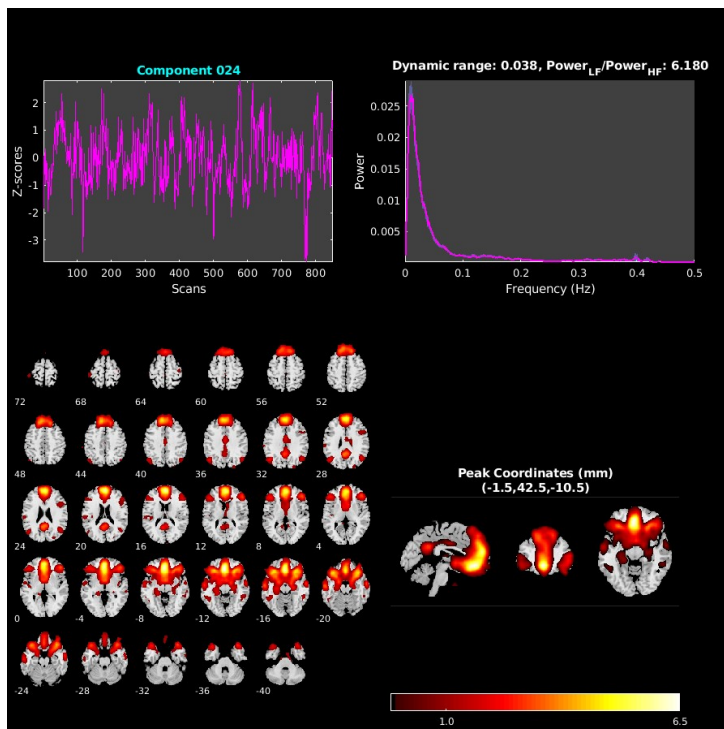
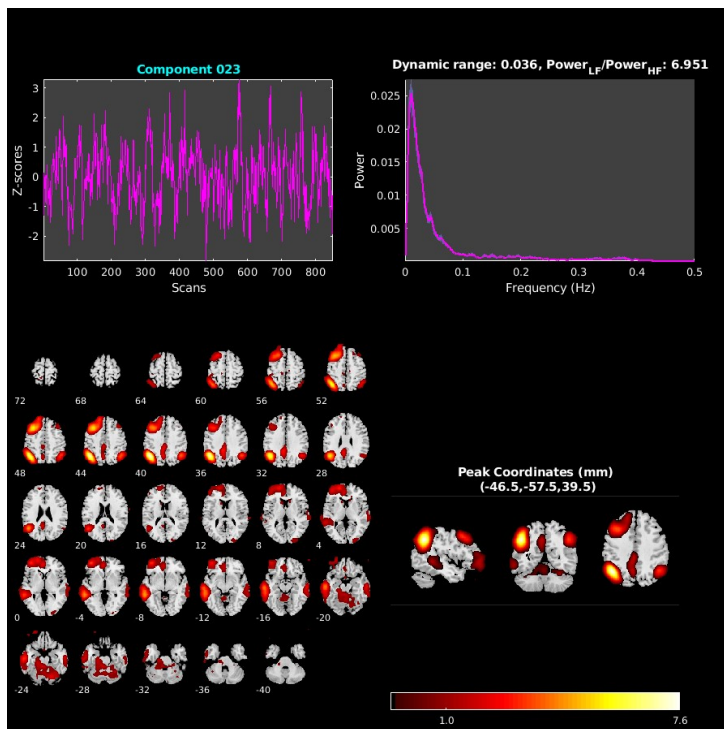






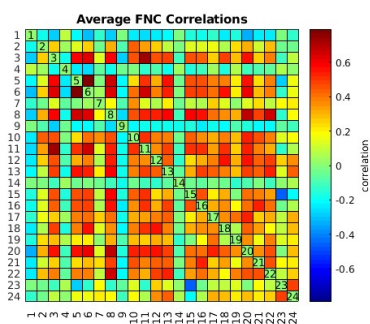






**FNC correlations**

Functional network connectivity correlations are computed for each data-set and averaged across sessions.



---

Published with MATLAB® R2017b