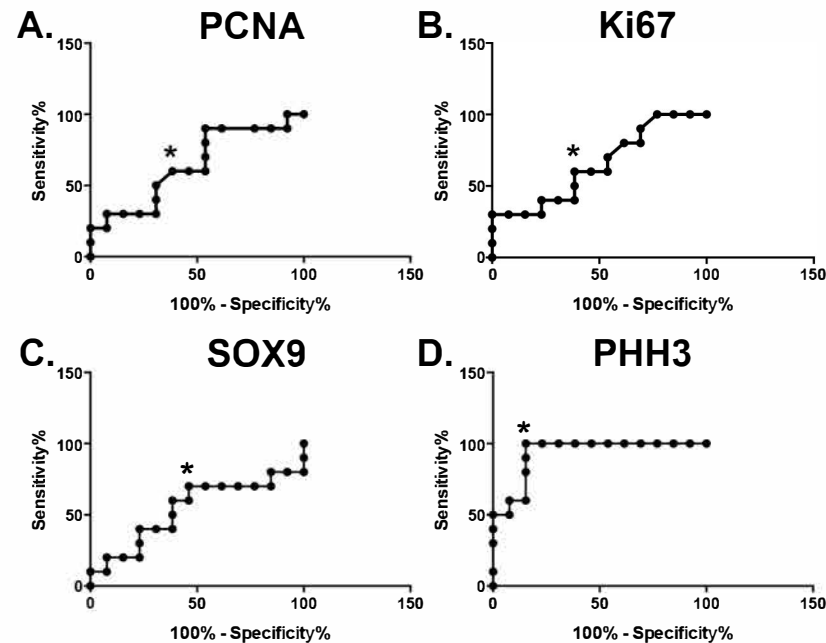




Supplementary Item 1: Receiver operator curve prediction of death in cases of LCV.



A. PCNA cutoff count of <62.5 (sensitivity 60%; 95% CI 26.24-87.84% and specificity 61.54%; 95% CI 31.58% to 86.14%); Area under the curve = 0.64; $p = 0.25$; 95%CI 0.41-0.88. B. Ki67 cutoff count of <16.5 (sensitivity 60%; CI 26.24-87.84% and specificity 61.54%; 31.58%-86.14%); Area under the curve = 0.646; $p = 0.239$; 95% CI 0.42 to 0.88. C. SOX9 count cutoff <24.55 (sensitivity 70%; CI 34.75-93.33% and specificity 53.85%; 95% CI 25.13-80.78%); Area under the curve = 0.54; $p = 0.76$; 95% CI 0.28-0.79. D. PHH3 cutoff count of <2.1 (sensitivity 100%; 95% CI 69.15-100% and specificity 84.62%; 95% CI 54.55-98.08%); Area under the curve = area 0.93; $p = 0.0005$; 95% CI 0.83-1.03. Asterisk indicates cutoff values associated with maximal sensitivity and sensitivity.