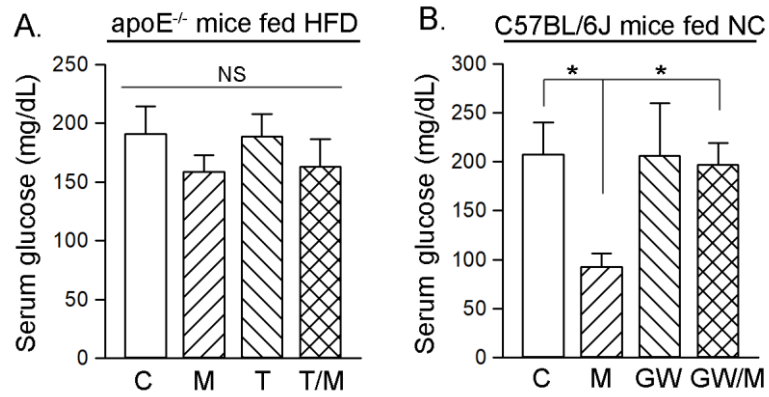


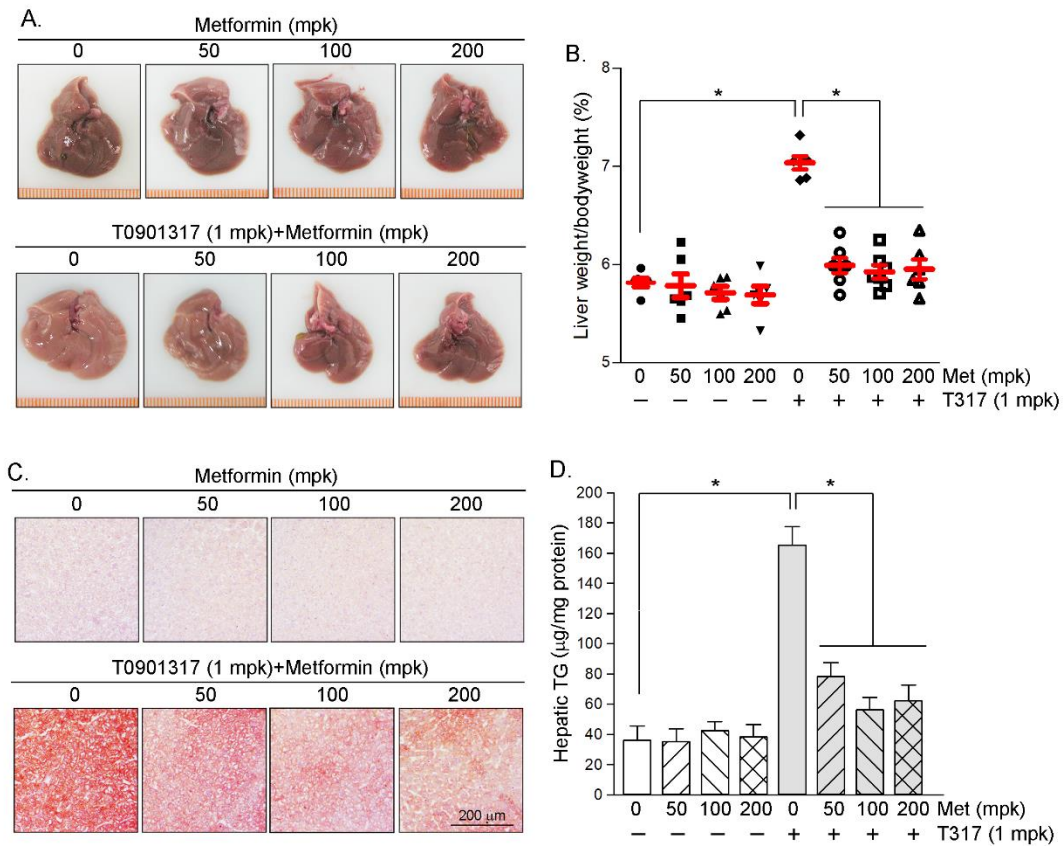
## Supporting information

Ma *et al*, Figure S1



**Figure S1. Effects of metformin and LXR ligands on mouse serum glucose levels**

Serum samples collected from the mice used in Figure 1 and Figure 5G were used to determine glucose levels. C: control; M: metformin; T: T317; GW: GW3965; T/M: T317 plus metformin; GW/M: GW3965 plus metformin. \*:  $P < 0.05$ ; NS: not significantly different ( $n=5$ ).



**Figure S2. Attenuation of T317-induced fatty liver by metformin is not in a dose-dependent manner**

C57BL/6J mice (male, ~8-week old) in 8 groups (5/group) received the following treatment for 2 weeks: Control, normal chow (NC); T317, NC containing T317 (1 mpk); Met: NC containing metformin (50, 100 or 200 mpk); and T317+Met, NC containing T317 (1 mpk) and metformin at the indicated dose. After treatment, liver samples were collected for the following assays: **A**, liver photos; **B**, ratios of liver weight to bodyweight; **C**, **D**: hepatic lipid content by Oil Red O staining of liver frozen sections (**C**) and TG quantitative analysis with total liver lipid extract (**D**). \*:  $P < 0.05$  ( $n = 5$ ).