

Supplementary Material to “Characterization and expression of the ABC family (G group) in ‘Dangshansuli’ pear (*Pyrus bretschneideri* Rehd.) and its russet mutante”

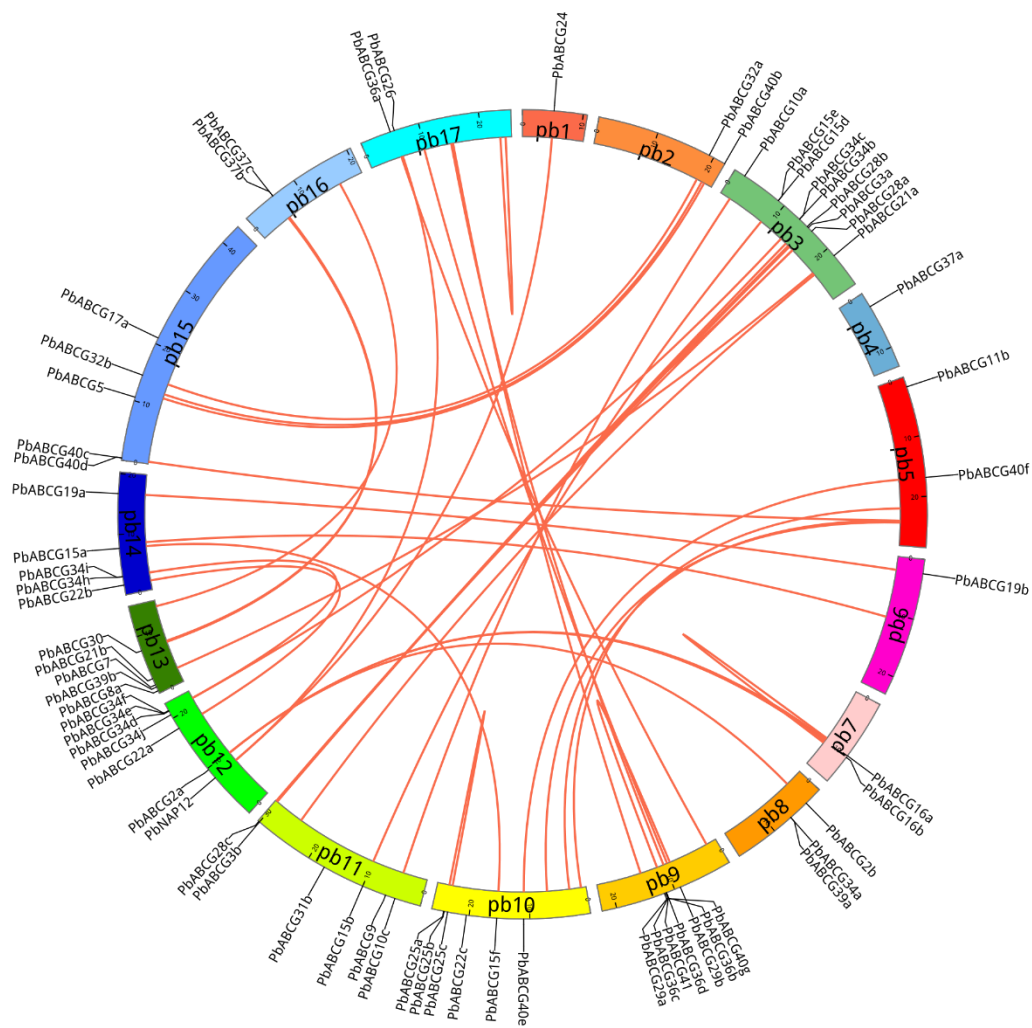


Figure S2 - Localization and duplication of the *PbABCG* genes in the pear genome. Circular visualization of the *PbABCG* genes was mapped on the different chromosomes in the genome using the Circos software. Chromosome number is indicated on the chromosome. The synteny relationship between each pair of *PbABCG* genes were detected by using the MicroSyn software. The genes have synteny relationship are linked by lines. Red link: >30 anchors in a synteny block, blue link: 20-30 anchors, green link: 10-20 anchors, gray link: 5-10 anchors.