

Additional file 2

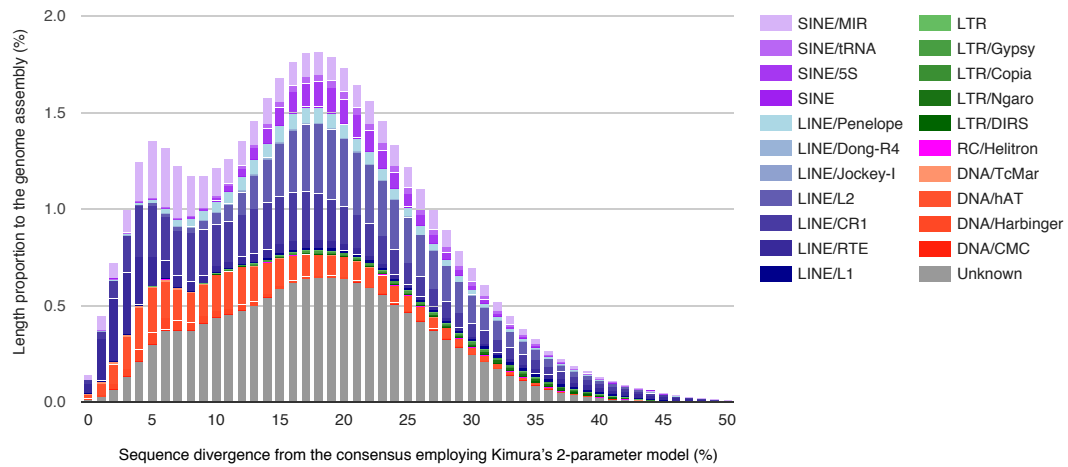


Figure S1. Repeat landscape

Relative abundances of repeat classes in the *P. picta* genome assembly are shown along sequence divergences against consensus, which can be correlated to the age from the generation of the repeats, based on the Kimura's two-parameter method. The figure was produced with the script `createRepeatLandscape.pl` supplied with RepeatMasker. Detailed statistics of the repeat contents are included in Additional file 1: Table S4.